

6-1906

Guilford, 1906

Sanborn Map Company

Follow this and additional works at: https://digitalcommons.library.umaine.edu/me_sanbornmaps

 Part of the [Geography Commons](#), and the [History Commons](#)

Recommended Citation

Sanborn Map Company, "Guilford, 1906" (1906). *Sanborn Maps of Maine*. 150.
https://digitalcommons.library.umaine.edu/me_sanbornmaps/150

This Book is brought to you for free and open access by DigitalCommons@UMaine. It has been accepted for inclusion in Sanborn Maps of Maine by an authorized administrator of DigitalCommons@UMaine. For more information, please contact um.library.technical.services@maine.edu.



KEY

- FIRE WALL ON 45° ROOF
- METAL CORNICHE
- FIRE WALL ON ANY ROOF
- WOOD CORNICE
- FIRE WALL ON 90° ROOF
- FRAME PARTITION
- OPENING WITH IRON DOOR
- STANDARD
- IRON DOOR
- WINDOWS & DOOR SHUTTERS
- WINDOWS 1 1/2 STORIES
- WINDOWS 2 1/2 STORIES
- 2 1/2 & 4 1/2

STABLE

BUILDINGS COLORED YELLOW ARE FRAME

- RED BRICK
- BLUE STONE
- GRAY IRON
- BROWN ADORNE
- GREEN SPECIALS

③ INDICATE RELATIVE HEIGHTS

⊕ FIRE STATION AS SHOWN IN KEY MAP

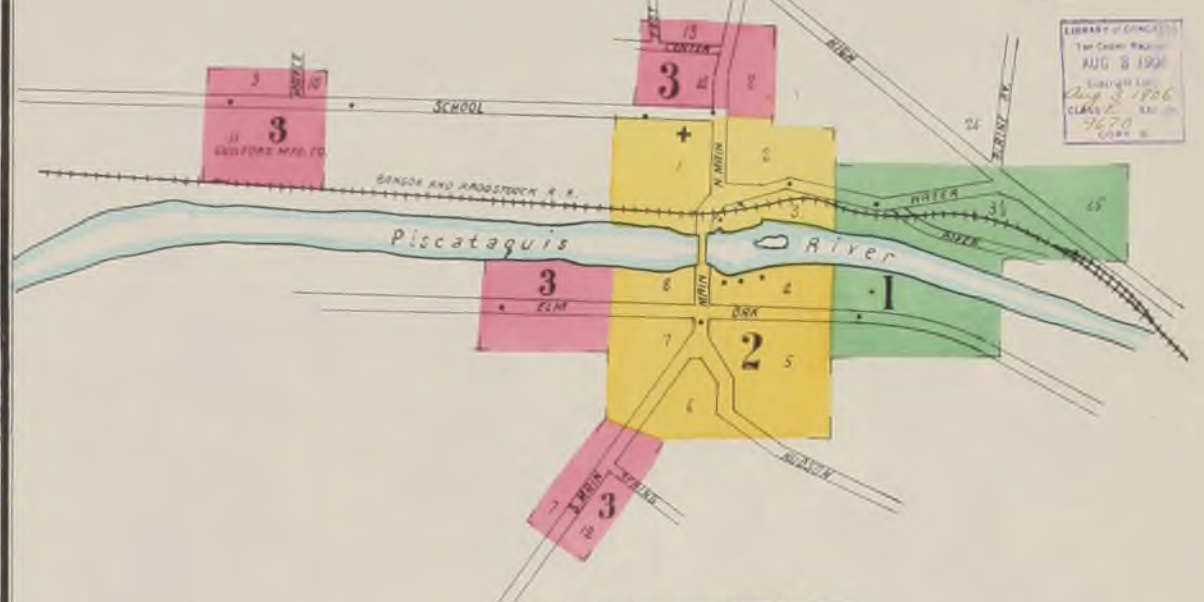
ALTERNATE STREET NUMBERS ARE ACTUAL

CONSECUTIVE STREET NUM ARE ARBITRARY

- NOTE -

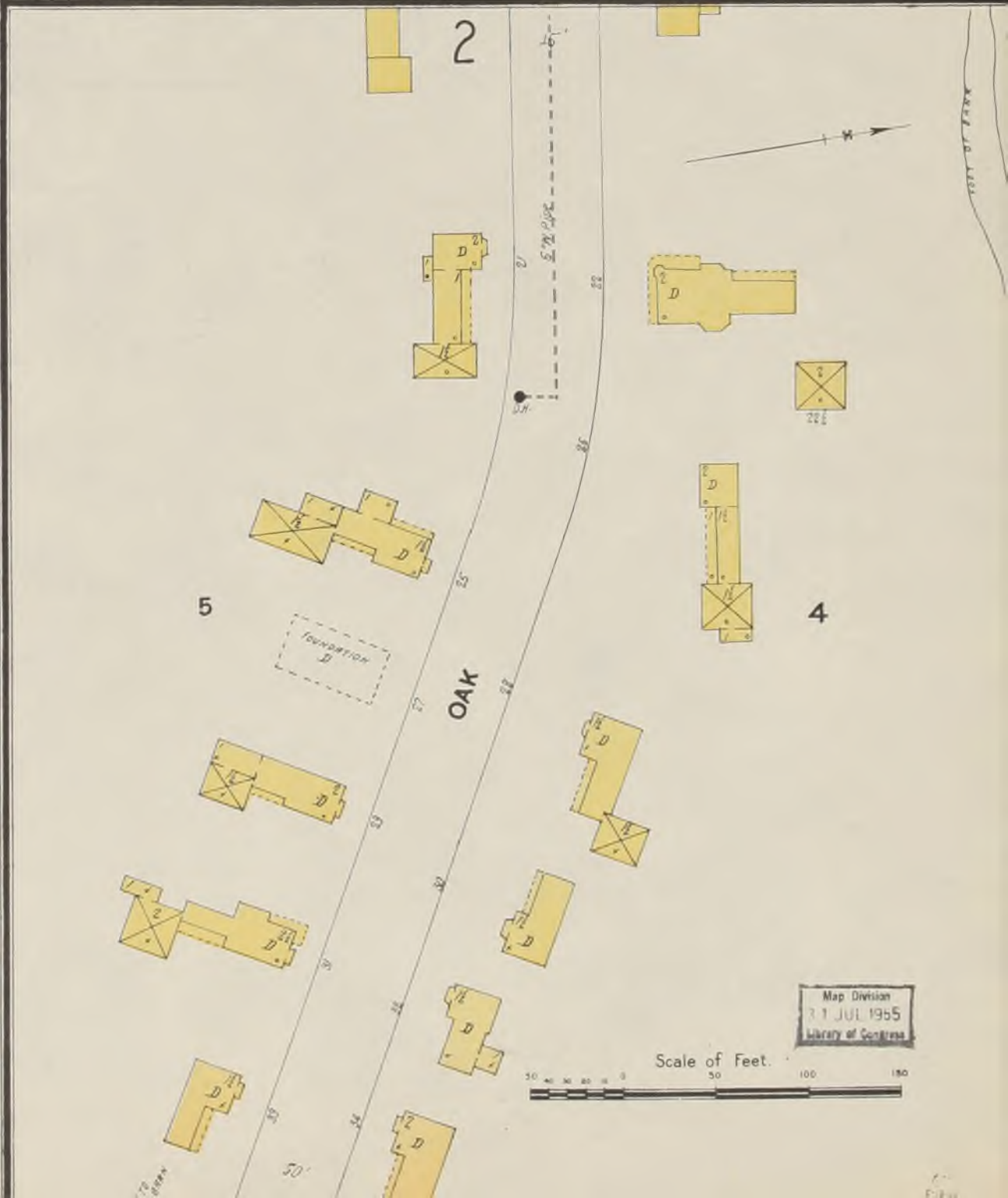
WATER FACILITIES: WATER PUMPED FROM RIVER BY W. T. KNOWLES PUMP AND ROTARY PUMP IN PISCATAQUIS WOOLEN MILL AND ROONEY ROTARY PUMP IN M. L. HUSSEY WOOLEN MILL. CAN BE USED TOGETHER OR SEPARATELY. SAMPLES OF WATER TAKEN SINCE 1900. @ W. H. S. STATIONING TO JOHN C. HAYES, BELONGING TO FACTORIES.

FIRE DEPT.: VOLUNTEER DEPT. CHIEF ENG. J. MENFERT PRD. ENGINE TRACT. MEL BLUM. 100' 6" 1902.



INDEX

SPECIALS	H	SHEET
B	High School	2
Bangor & Aroostook R. R. Freight Depot	Hussey & Goldthwaite, Elevator & Grist Mill	2
Braeburn Hotel	Hussey, M. L., Woolen Co.	2
Livery		3
F	Knowlton, P. H., Kindling Wood Factory	3
First National Bank		2
G	Piscataquis Woolen Co.	2
Guilford Lumber Co., Box Shook, Mill & Blind Factory		3
Guilford Recorder, Printing	Universalist Church	3



Map Division
21 JUL 1955
Library of Congress

