

2017

What to do with doo

K. Kaczor

University of Maine, keri.kaczor@maine.edu

Follow this and additional works at: https://digitalcommons.library.umaine.edu/seagrant_pub

Repository Citation

Kaczor, K., "What to do with doo" (2017). *Maine Sea Grant Publications*. 151.
https://digitalcommons.library.umaine.edu/seagrant_pub/151

This Other is brought to you for free and open access by DigitalCommons@UMaine. It has been accepted for inclusion in Maine Sea Grant Publications by an authorized administrator of DigitalCommons@UMaine. For more information, please contact um.library.technical.services@maine.edu.

How pet waste makes its way to the ocean

🐾 Pet waste left on the beach, street, or lawn runs off into our rivers, streams, and storm drains, eventually entering the ocean untreated.

🐾 Bacteria can also persist and regrow in sand, sediments, and algae mats long after the source has been removed.



What to Do With Doo

With questions or concerns contact:

Lynn Copeland
Saco Conservation Commission
(207) 712-6776
lynn.h.copeland@gmail.com



Clean up after your pets
and do your part to keep
our beaches healthy!

For more information visit:

www.mainehealthybeaches.org

The University of Maine does not discriminate on the grounds of race, color, religion, sex, sexual orientation, including transgender status and gender expression, national origin, citizenship status, age, disability, genetic information or veteran's status in employment, education, and all other programs and activities. Director, Equal Opportunity, 101 N. Stevens Hall, 207-581-1226, equal.opportunity@maine.edu.



The Inside Scoop

Pet waste contributes to unsafe bacteria levels in water and sand.



Symptoms that can occur from contact with unsafe bacteria levels:

- Nausea
- Diarrhea
- Stomach cramps
- Chills and fever
- Skin rashes
- Infections (eyes, ears, nose, and throat)

What to do

 Pick it up with a plastic bag and place in a trash can or proper receptacle

 Flush it down the toilet
*Do not flush any type of bag

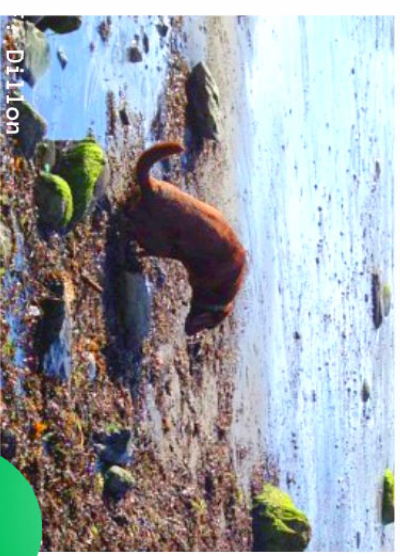
 Bury it in your yard
*Dig a hole about five inches deep and away from vegetable gardens

 Compost for use on flowers and other decorative plants.
*Do not use on vegetable gardens



The Bottom Line

Preventing pet waste from making its way into our water resources is an easy way you can help keep our beaches healthy and safe for swimming.



Did you know ...

Just one gram of dog feces contains 23 million fecal coliform bacteria. That is nearly twice the 13 million found in human waste!

www.stopthepetwaste.com/pdf/pathogens.pdf; Van der Weij 1995.

