

12-1911

Cherryfield, 1911

Sanborn Map Company

Follow this and additional works at: https://digitalcommons.library.umaine.edu/me_sanbornmaps



Part of the [Geography Commons](#), and the [History Commons](#)

Recommended Citation

Sanborn Map Company, "Cherryfield, 1911" (1911). *Sanborn Maps of Maine*. 163.
https://digitalcommons.library.umaine.edu/me_sanbornmaps/163

This Book is brought to you for free and open access by DigitalCommons@UMaine. It has been accepted for inclusion in Sanborn Maps of Maine by an authorized administrator of DigitalCommons@UMaine. For more information, please contact um.library.technical.services@maine.edu.

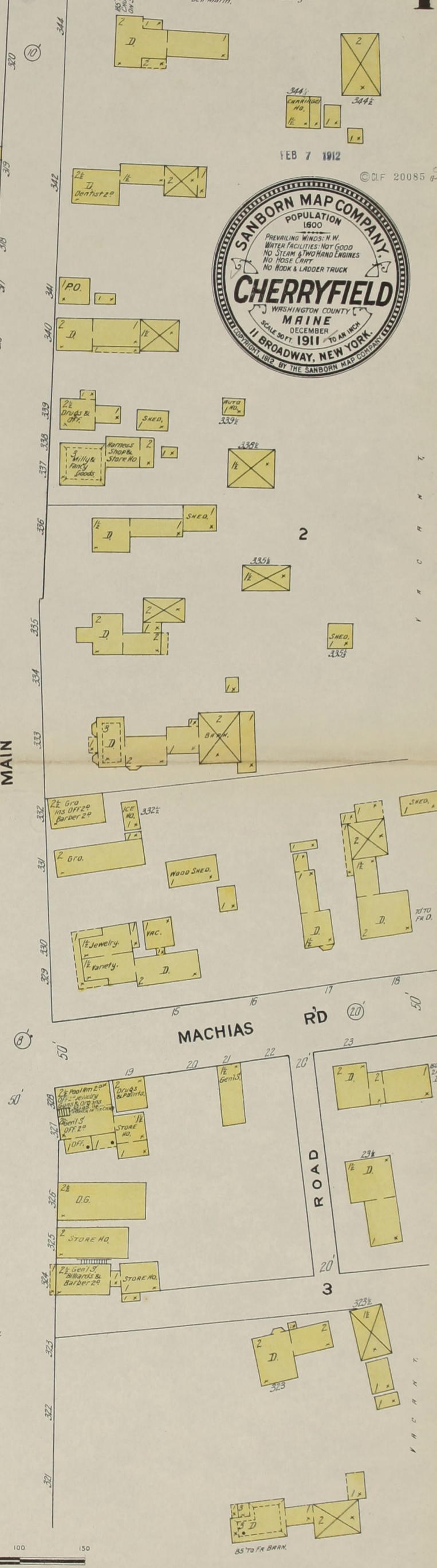
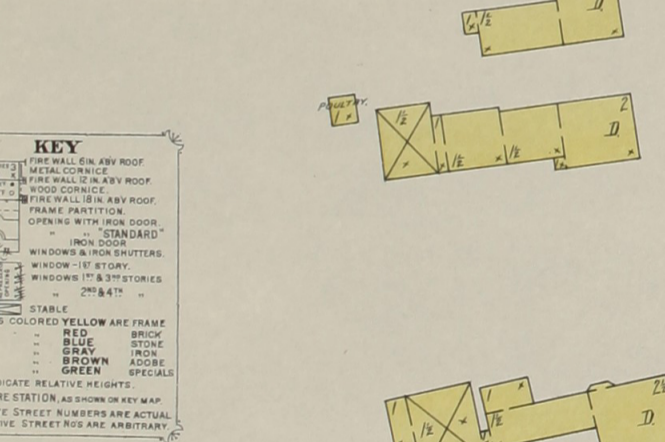
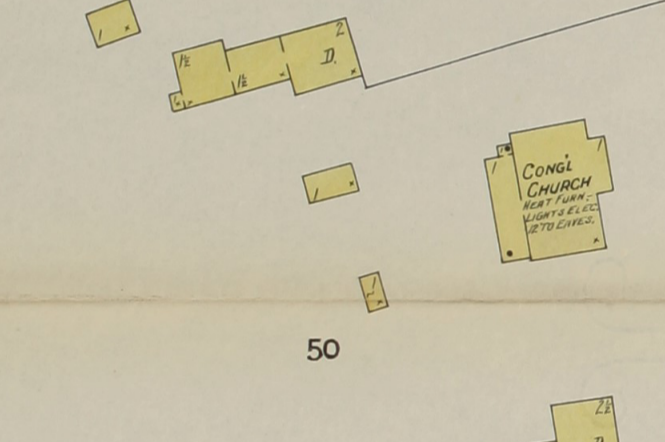
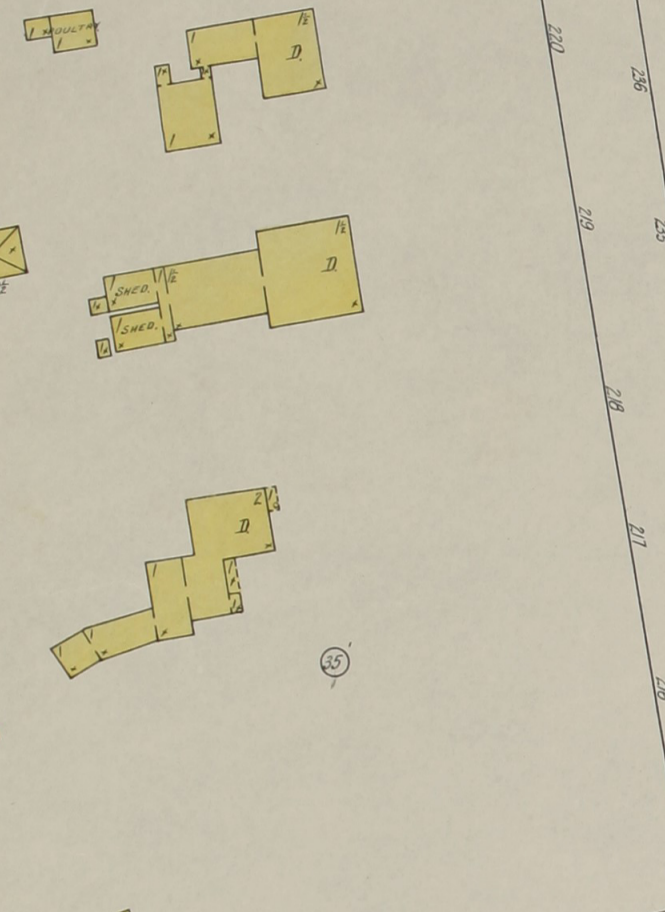


FEB 7 1912

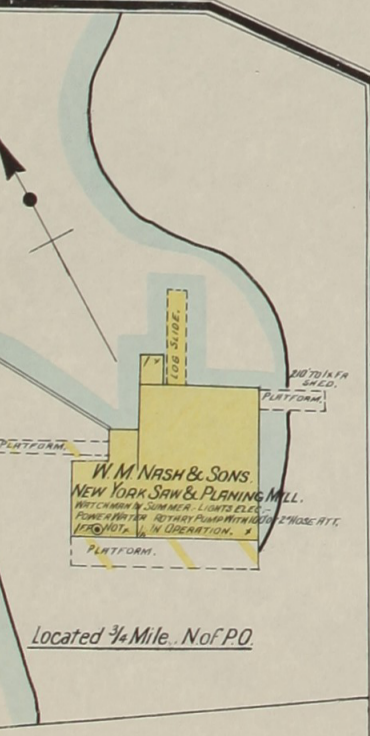
© CLF 20085 9



WATER FACILITIES NOT GOOD. FIRE DEPT. 2 1/2 HAND ENDS 1000' OF HOSE. STREET NOT PAVED. FIRE & HERO LIGHTS. BELL ALARM.



KEY
 FIRE WALL IN ANY ROOF
 METAL CORNICE
 FIRE WALL IN ANY ROOF
 WOOD CORNICE
 FIRE WALL IN ANY ROOF
 FRAME PARTITION
 OPENING WITH IRON DOOR
 OPENING WITH IRON SHUTTERS
 IRON DOOR
 IRON SHUTTERS
 WINDOWS - 1ST STORY
 WINDOWS - 2ND & 3RD STORIES
 2ND & 3RD STORIES
 STABLE
 BUILDING COLORED YELLOW ARE FRAME
 RED BRICK
 BLUE STONE
 GRAY IRON
 BROWN ADORNE
 GREEN SPECIALS
 (S) INDICATE RELATIVE HEIGHTS
 FIRE STATION, AS SHOWN ON KEY MAP
 ALTERNATE STREET NUMBERS ARE ACTUAL
 CONSECUTIVE STREET NOS ARE ARBITRARY



COVERED BRIDGE 12 TO ENDS

E.K. WILSON PLANING MILL & BOX FAC.
 NIGHT MATCHES - NO LOCK - POWER STEAM
 NO HERTZ - FUEL SHARPERS - LIGHTS ELEC
 PORTLAND P. & E. 2 1/2" 100' HOSE
 30' OF 2" HOSE ON BRANKLE WILLED TO WALL

AL STEWART
 BLUES BERRY
 SQUARED
 PACKING
 SHEDS
 FIVE BUILDING
 BIRD PEN
 STONE
 WOOD OUT OF SCORCH

