

12-1916

## Millinocket, 1916

Sanborn Map Company

Follow this and additional works at: [https://digitalcommons.library.umaine.edu/me\\_sanbornmaps](https://digitalcommons.library.umaine.edu/me_sanbornmaps)

 Part of the [Geography Commons](#), and the [History Commons](#)

---

### Recommended Citation

Sanborn Map Company, "Millinocket, 1916" (1916). *Sanborn Maps of Maine*. 139.  
[https://digitalcommons.library.umaine.edu/me\\_sanbornmaps/139](https://digitalcommons.library.umaine.edu/me_sanbornmaps/139)

This Book is brought to you for free and open access by DigitalCommons@UMaine. It has been accepted for inclusion in Sanborn Maps of Maine by an authorized administrator of DigitalCommons@UMaine. For more information, please contact [um.library.technical.services@maine.edu](mailto:um.library.technical.services@maine.edu).





JAN 19 1917

© C. I. F. 30332

**WATER FACILITIES:**

Gravity system of Water Works, owned by Millinocket Water Co. Constructed in 1900. Supply from Ferguson Pond, located 1 mile South West of Post Office & elev'd 95' above Street in business district. Average pressure - 40 lbs. per sq. inch. - 12 miles 4", 6", 8", 10" & 12" water mains - 33 public hydrants.

When fire alarm is sounded the following pumps at The Great Northern Paper Co. mill are connected with the village system - 2 Deane steam pumps, capacity 1500 gals. per minute each - 2 Rodney Hunt rotary pumps, capacity 1000 gals. per minute each.

**FIRE DEPT:**

1 regular man on duty day & night, 40 volunteer men - 4 men sleep at Fire Dept. Ho. nights - 1 Knox Combination Chem & Hose Auto Truck, two 40 gal. tanks, 200' chem hose, 1200' 2 1/2" hose - One 2 horse comb. Chemical & Hose Sled, two 25 gal. tanks, 200' chem. hose, 300' 2 1/2" hose - 1 Hook & Ladder Truck - 2 Hds. Carts - 2 Horses, 4000' 2 1/2" hose - Gamewell fire alarm system, 17 boxes, bell at Central Fire Station & whistle at Paper Mill.

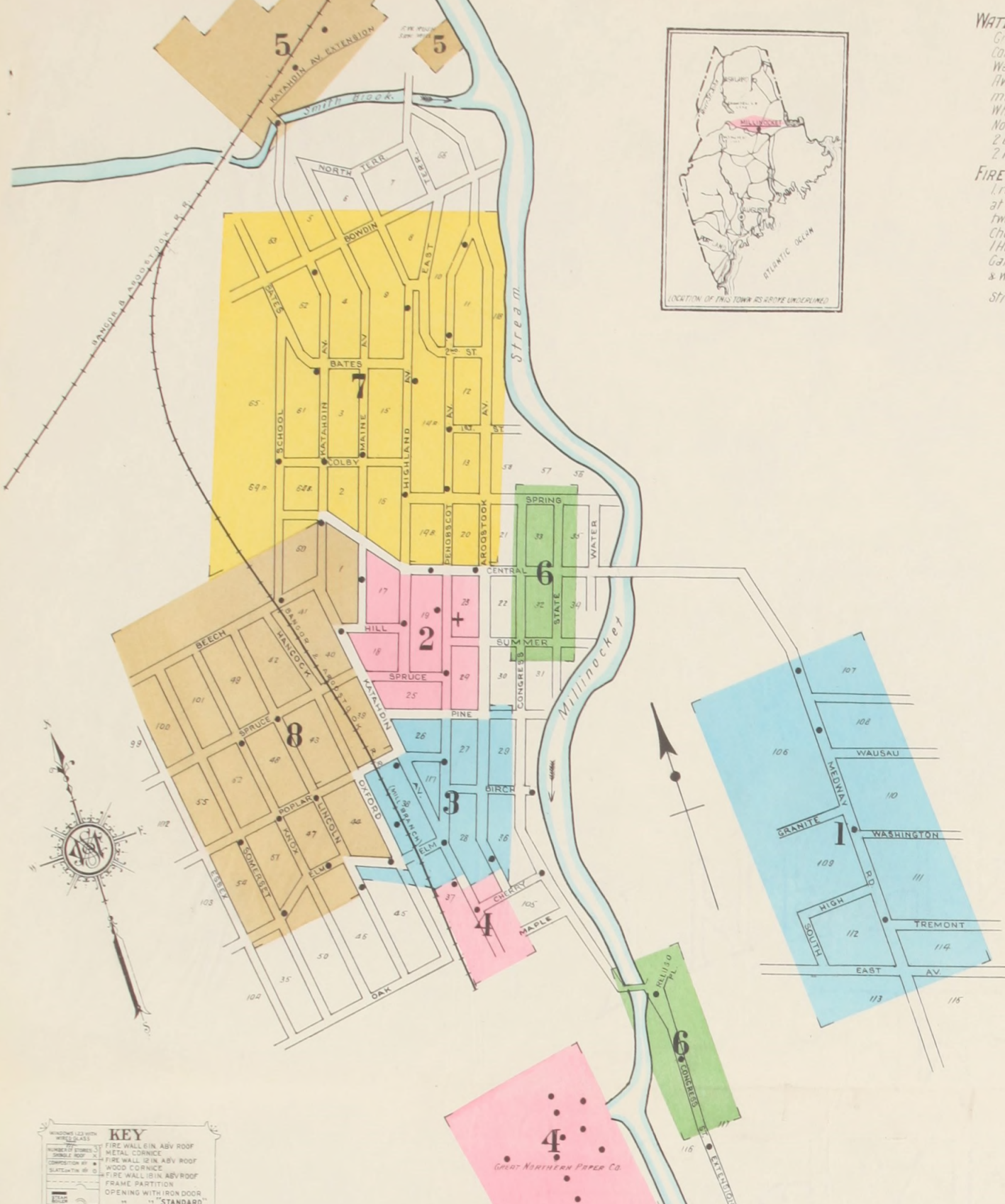
Streets: not paved - Public lights: acetylene gas - No fire limits.



**INDEX**

STREETS	SHEET	SPECIALS	SHEET
Aroostock Ave., 399-400	4	Hill, 104-114	2
" " 401-440	3	Katahdin Ave., 2, 3, 4, 5, 7 & 8	8
" " W. S., Pine to Central	2	" " Extension, 5	8
" " Central to N. of Second	7	Knox, 8	8
Bates, 7	7	Lincoln, 3 & 8	8
Beech, 8	8	Maine Ave., 101-167	7
Birch, 3	3	" " 201-212	8
Bowdin, 7	7	" " 213-219	2
Central, 15-33	7	Medway Road, 1	1
" " 37-50	6	Oxford, 3 & 8	8
" " 101-113	2	Peluso Place, 6	6
" " 601-604	6	Penobscott Ave., 301-326	3
Cherry, 4	4	" " 401-441	2
Colby, 7	7	" " 501-585	8
Congress, 6	6	" " 15-26	3
Street Extension, 6	6	" " 101-112	2
East Ave., 1	1	" " 63-106	8
Terrace, 7	7	" " 107-120	3
Elm, 15-20	8	School, 7	7
" " 21-31	3	Second, 3	3
Essex, 186-208	8	Somerset, 8	8
First, 7	7	South, 1	1
Granite, 1	1	Spring, 6 & 7	7
Hancock, 8	8	Spruce, 19-38	2
Highland Ave., 290-313	2	" " Katahdin Ave. to Essex	7
High, 401-463	7	State, 6	6
Hill, 101-103	8	Summer, 2 & 6	6
		Tremont, 1	1
		Washington, 7	7
		Wausau (arbitrary), 8	8

NOTE.—House Numbers given are arbitrary.



**KEY**

- FIRE WALL IN ASV ROOF
- METAL CORNICE
- FIRE WALL 12 IN. ASV ROOF
- WOOD CORNICE
- FIRE WALL 12 IN. ASV ROOF
- FRAME PARTITION
- OPENING WITH IRON DOOR
- " " STANDARD
- IRON DOOR
- WINDOWS & IRON SHUTTERS
- WINDOW 1ST STORY
- WINDOWS 1 1/2 & 2 1/2 STORIES
- " " 2 1/2 & 4"
- STABLE (CB) CONCRETE BLOCK
- BUILDINGS COLORED YELLOW ARE FRAME
- " " RED BRICK
- " " BLUE STONE
- " " GRAY IRON
- " " BROWN FIRE PROOF
- INDICATE RELATIVE HEIGHTS
- AUTOMATIC SPRINKLERS
- FIRE STATION AS SHOWN ON KEY MAP
- ALTERNATE STREET NUMBERS ARE ACTUAL
- CONSECUTIVE STREET NOS ARE ARBITRARY

