

1-1904

Millinocket, 1904

Sanborn Map Company

Follow this and additional works at: https://digitalcommons.library.umaine.edu/me_sanbornmaps

 Part of the [Geography Commons](#), and the [History Commons](#)

Recommended Citation

Sanborn Map Company, "Millinocket, 1904" (1904). *Sanborn Maps of Maine*. 141.
https://digitalcommons.library.umaine.edu/me_sanbornmaps/141

This Book is brought to you for free and open access by DigitalCommons@UMaine. It has been accepted for inclusion in Sanborn Maps of Maine by an authorized administrator of DigitalCommons@UMaine. For more information, please contact um.library.technical.services@maine.edu.



KEY

- FIRE WALL IN ABV ROOF
- METAL CORNICE
- FIRE WALL IN ABV ROOF
- WOOD CORNICE
- FIRE WALL IN ABV ROOF
- FRAME PARTITION
- OPENING WITH IRON DOOR
- "STANDARD"
- WINDOWS & IRON SHUTTERS
- WINDOW - 1ST STORY
- WINDOWS 1ST & 2ND STORIES
- 2ND & 4TH

STABLE BUILDINGS COLORED YELLOW ARE FRAME

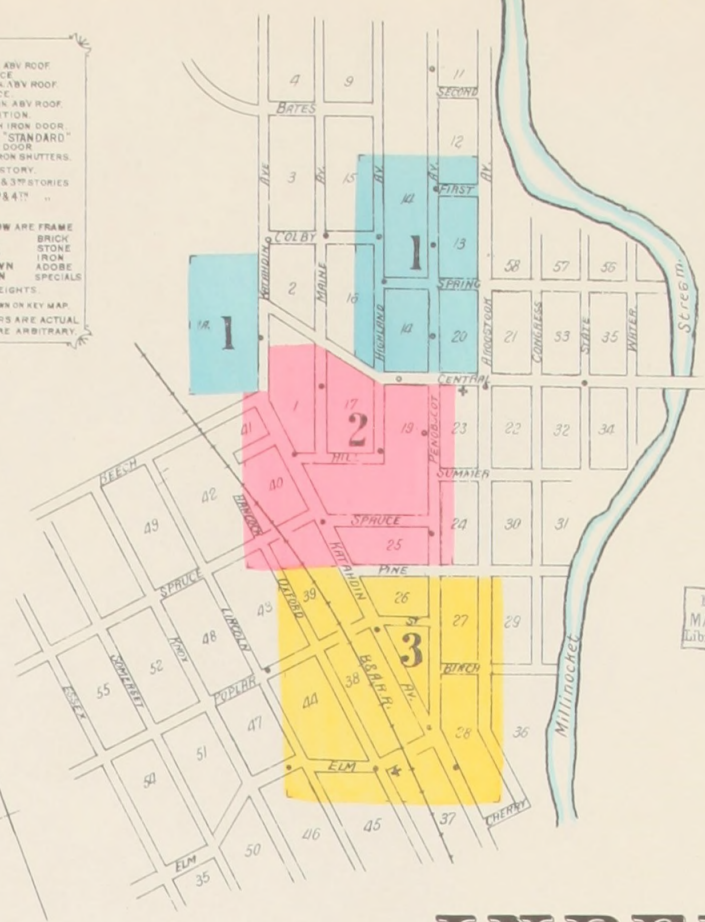
- RED BRICK
- BLUE STONE
- GRAY IRON
- BROWN ADORNE
- GREEN SPECIALS

(1) INDICATE RELATIVE HEIGHTS

(*) FIRE STATION AS SHOWN IN KEY MAP

(+) ALTERNATE STREET NUMBERS ARE ACTUAL

(-) CONSECUTIVE STREET NOS ARE ARBITRARY



Map Division
MAR 30 1904
Library of Congress

LIBRARY OF CONGRESS
MAR 23 1904
U.S. DEPARTMENT OF THE INTERIOR
GEOLOGICAL SURVEY
WASHINGTON, D.C.

INDEX.

STREETS.		SPECIALS.	
Aroostook Ave.	401-431 3	Kathadin	301-336 2
Bate	601-612 1	"	401-408 1
Birch	15-23 1	Lincoln	201-212 3
Central	101-104 2	Maine Ave.	201-220 2
Colby	15-31 3	Oxford	301-335 3
Elm	101-108 2	"	401-407 2
First	101-115 2	Penobscot	301-326 3
Highland Ave.	301-313 2	"	401-441 2
"	401-427 1	"	501-538 1
Hill	101-115 2	Pine	15-22 3
Kathadin	201-238 3	"	101-108 2
		Poplar	101-120 3
		Spring	15-38 2
		Spruce	15-38 2

NOTE.—House Numbers given are arbitrary.

