

12-1889

## Brunswick, 1889

Sanborn-Perris Map Co.

Follow this and additional works at: [https://digitalcommons.library.umaine.edu/me\\_sanbornmaps](https://digitalcommons.library.umaine.edu/me_sanbornmaps)



Part of the [Geography Commons](#), and the [History Commons](#)

---

### Recommended Citation

Sanborn-Perris Map Co., "Brunswick, 1889" (1889). *Sanborn Maps of Maine*. 134.  
[https://digitalcommons.library.umaine.edu/me\\_sanbornmaps/134](https://digitalcommons.library.umaine.edu/me_sanbornmaps/134)

This Book is brought to you for free and open access by DigitalCommons@UMaine. It has been accepted for inclusion in Sanborn Maps of Maine by an authorized administrator of DigitalCommons@UMaine. For more information, please contact [um.library.technical.services@maine.edu](mailto:um.library.technical.services@maine.edu).

# Brunswick

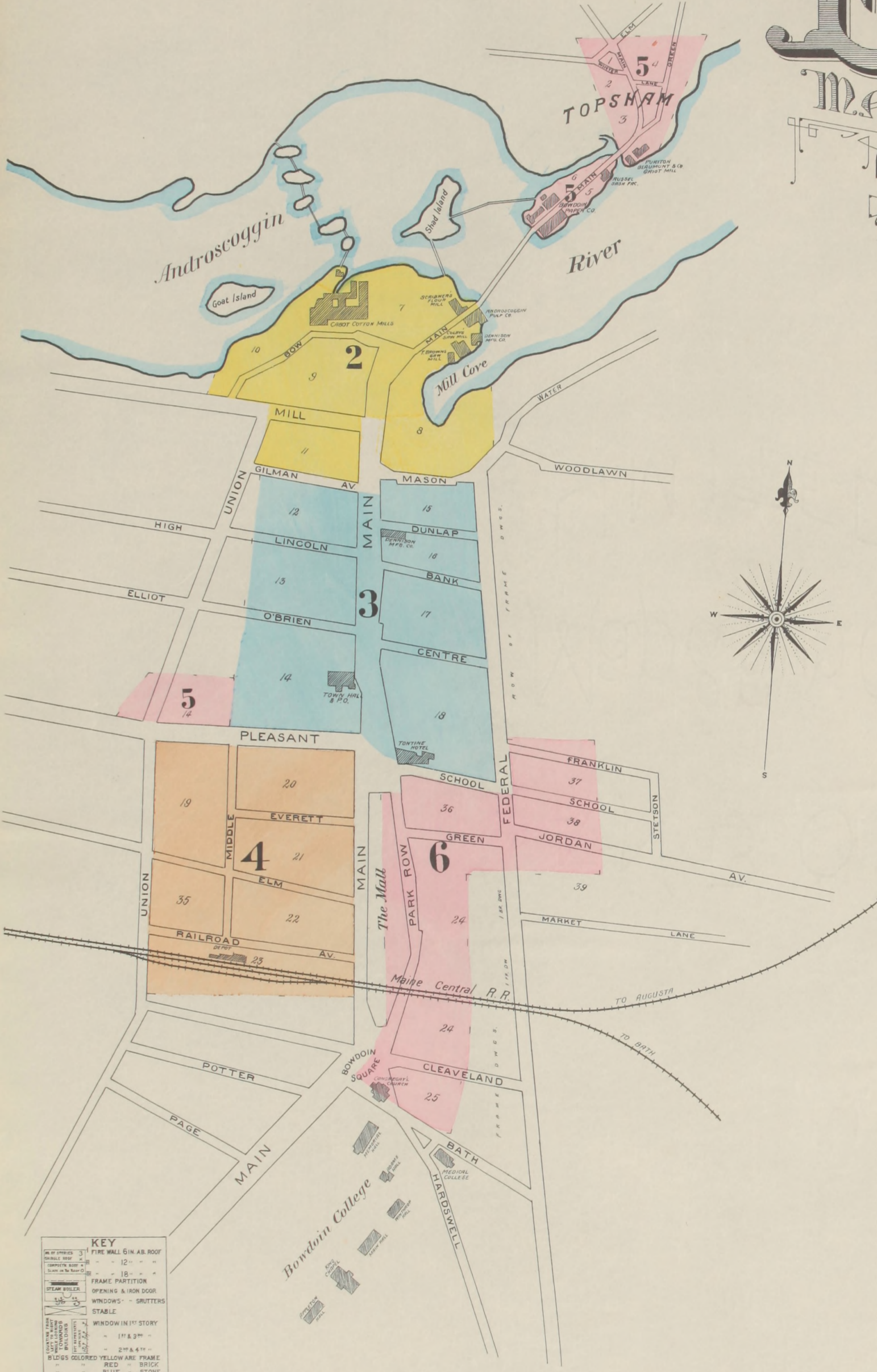
CUMBERLAND CO. MAINE  
**Sanborn-Perris Map Co.**  
 117 BROADWAY, NEW YORK  
 LIMITED

SCALE 50 FT. TO AN INCH.

Dec. 1889

LIBRARY OF CONGRESS  
 FEB. 3 1890  
 WASHINGTON

COPYRIGHT, 1890 BY THE SANBORN-PERRIS MAP CO. LIMITED



**POPULATION - 6000**  
 Prevailing Winds, West.

**WATER FACILITIES.**  
 Water supply from brook water pumped to stand pipe capacity 620,000 Galls., by Deane Compound Duplex Pump. Storage Reservoir, Capacity 12 Million Galls. with Deane High Pressure Pump. 11 Miles of W Pipe 60 Hydrants Pressure at Town Hall from Stand Pipe, 65 lbs. per Sq. Inch.

**FIRE DEPARTMENT**  
 Volunteer, 100 Call Men, 2 Hand Engines, 4 Hose Carts, 1 Hook & Ladder Truck, 3200 ft 2 1/2 in. Hose in good order, Grades, very level.  
 Topsham - 1 Hand Engine, 700ft. 2 1/2" Hose.

This is to certify, that the new insurance map of Brunswick, Maine, made by the Sanborn-Perris Map Co. Limited of New York, has been submitted to us for examination. We find a liberal portion of the town shown and the survey practically correct. We recommend same to the use of our companies.

*Thos. H. Riley,  
 Wm. M. Pease*

## INDEX.

For "TOPSHAM," see Sheet No. 5.

STREETS.	INDEX	W
Water, near Federal, .....	2	
<b>B</b>		
Bank, .....	3	
Bath, .....	6	
Bow, .....	2	
Bowdoin Square, .....	6	
<b>C</b>		
Centre, .....	3	
Cleveland, .....	6	
<b>D</b>		
Dunlap, .....	3	
<b>E</b>		
Elm, .....	4	
Everett, .....	4	
<b>F</b>		
Federal, near School, .....	3	
Franklin, .....	6	
<b>G</b>		
Gilman Ave., North Side, .....	*2	
" " South, .....	*3	
Green, .....	6	
<b>J</b>		
Jordan Ave., near Federal, .....	6	
<b>L</b>		
Lincoln, .....	3	
<b>M</b>		
Main, .....	4	
" " M. C. R. R. to Pleasant	3	
" " Pleasant to Gilman Ave.	2	
" " N. of Gilman Ave.	5	
" " at Topsham	5	
Mason, North Side, .....	*2	
" " South, .....	*3	
Middle, .....	4	
Mill, .....	2	
<b>O</b>		
O'Brien, .....	3	
<b>P</b>		
Park Row, .....	6	
Pleasant, North Side, .....	*3 & 5	
" " South, .....	*4	
<b>R</b>		
Railroad Ave., .....	4	
<b>S</b>		
School, .....	6	
" " North Side, .....	*3	
" " South, .....	*6	
<b>U</b>		
Union, .....	4	
" " M. C. R. R. to Pleasant	5	
" " part N. of Pleasant	2	
Water, near Federal, .....	2	
<b>SPECIALS.</b>		
<b>A</b>		
Androscoggin Pulp Co., .....	2	
Arade Block, .....	3	
Armory, .....	3	
<b>B</b>		
Baptist Church, Main St., .....	3	
" " O'Brien St., .....	3	
" " Elm St., .....	5	
Beaumont, E., Flour Mill, .....	5	
Bowdoin Paper Mfg Co., .....	5	
Brackett Block, .....	3	
Brown, T., Saw Mill, .....	2	
<b>C</b>		
Cabot Cotton Mfg Co., .....	2	
Colby, C., Saw Mill, .....	2	
" " D. S., Saw & Planing Mill, .....	5	
Congregational Church, .....	6	
<b>D</b>		
Dennison Mfg Co., .....	2	
" " Paper Box Fact., .....	3	
" " Wood " " .....	5	
Dunlap Block, .....	3	
<b>E</b>		
Episcopal Church, .....	4	
<b>F</b>		
Free-Will Baptist Church, .....	3	
<b>K</b>		
Knight's Bakery, .....	3	
<b>L</b>		
Lincoln's Block, .....	3	
<b>M</b>		
M. C. R. R. Depot, .....	4	
Methodist Episcopal Church, .....	3	
<b>O</b>		
Odd Fellows Block, .....	3	
<b>P</b>		
Public School, .....	6	
<b>S</b>		
Storer's Block, .....	3	
<b>T</b>		
Tontine Hotel, .....	3	
Town Hall, .....	3	
<b>U</b>		
Unitarian Church, .....	6	
Universalist Church, .....	4	

\* Indicates only one side of Street shown.

**KEY**  
 FIRE WALL 5 IN. AS. ROOF  
 12 - - -  
 18 - - -  
 24 - - -  
 30 - - -  
 36 - - -  
 42 - - -  
 48 - - -  
 54 - - -  
 60 - - -  
 66 - - -  
 72 - - -  
 78 - - -  
 84 - - -  
 90 - - -  
 96 - - -  
 102 - - -  
 108 - - -  
 114 - - -  
 120 - - -  
 126 - - -  
 132 - - -  
 138 - - -  
 144 - - -  
 150 - - -  
 156 - - -  
 162 - - -  
 168 - - -  
 174 - - -  
 180 - - -  
 186 - - -  
 192 - - -  
 198 - - -  
 204 - - -  
 210 - - -  
 216 - - -  
 222 - - -  
 228 - - -  
 234 - - -  
 240 - - -  
 246 - - -  
 252 - - -  
 258 - - -  
 264 - - -  
 270 - - -  
 276 - - -  
 282 - - -  
 288 - - -  
 294 - - -  
 300 - - -  
 306 - - -  
 312 - - -  
 318 - - -  
 324 - - -  
 330 - - -  
 336 - - -  
 342 - - -  
 348 - - -  
 354 - - -  
 360 - - -  
 366 - - -  
 372 - - -  
 378 - - -  
 384 - - -  
 390 - - -  
 396 - - -  
 402 - - -  
 408 - - -  
 414 - - -  
 420 - - -  
 426 - - -  
 432 - - -  
 438 - - -  
 444 - - -  
 450 - - -  
 456 - - -  
 462 - - -  
 468 - - -  
 474 - - -  
 480 - - -  
 486 - - -  
 492 - - -  
 498 - - -  
 504 - - -  
 510 - - -  
 516 - - -  
 522 - - -  
 528 - - -  
 534 - - -  
 540 - - -  
 546 - - -  
 552 - - -  
 558 - - -  
 564 - - -  
 570 - - -  
 576 - - -  
 582 - - -  
 588 - - -  
 594 - - -  
 600 - - -  
 606 - - -  
 612 - - -  
 618 - - -  
 624 - - -  
 630 - - -  
 636 - - -  
 642 - - -  
 648 - - -  
 654 - - -  
 660 - - -  
 666 - - -  
 672 - - -  
 678 - - -  
 684 - - -  
 690 - - -  
 696 - - -  
 702 - - -  
 708 - - -  
 714 - - -  
 720 - - -  
 726 - - -  
 732 - - -  
 738 - - -  
 744 - - -  
 750 - - -  
 756 - - -  
 762 - - -  
 768 - - -  
 774 - - -  
 780 - - -  
 786 - - -  
 792 - - -  
 798 - - -  
 804 - - -  
 810 - - -  
 816 - - -  
 822 - - -  
 828 - - -  
 834 - - -  
 840 - - -  
 846 - - -  
 852 - - -  
 858 - - -  
 864 - - -  
 870 - - -  
 876 - - -  
 882 - - -  
 888 - - -  
 894 - - -  
 900 - - -  
 906 - - -  
 912 - - -  
 918 - - -  
 924 - - -  
 930 - - -  
 936 - - -  
 942 - - -  
 948 - - -  
 954 - - -  
 960 - - -  
 966 - - -  
 972 - - -  
 978 - - -  
 984 - - -  
 990 - - -  
 996 - - -  
 1000 - - -