

8-1911

Caribou, 1911

Sanborn Map Company

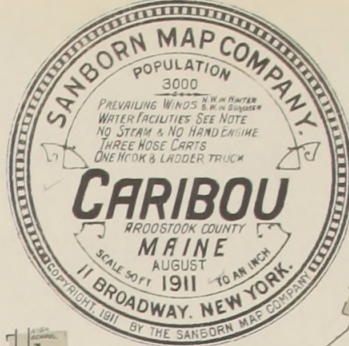
Follow this and additional works at: https://digitalcommons.library.umaine.edu/me_sanbornmaps

 Part of the [Geography Commons](#), and the [History Commons](#)

Recommended Citation

Sanborn Map Company, "Caribou, 1911" (1911). *Sanborn Maps of Maine*. 125.
https://digitalcommons.library.umaine.edu/me_sanbornmaps/125

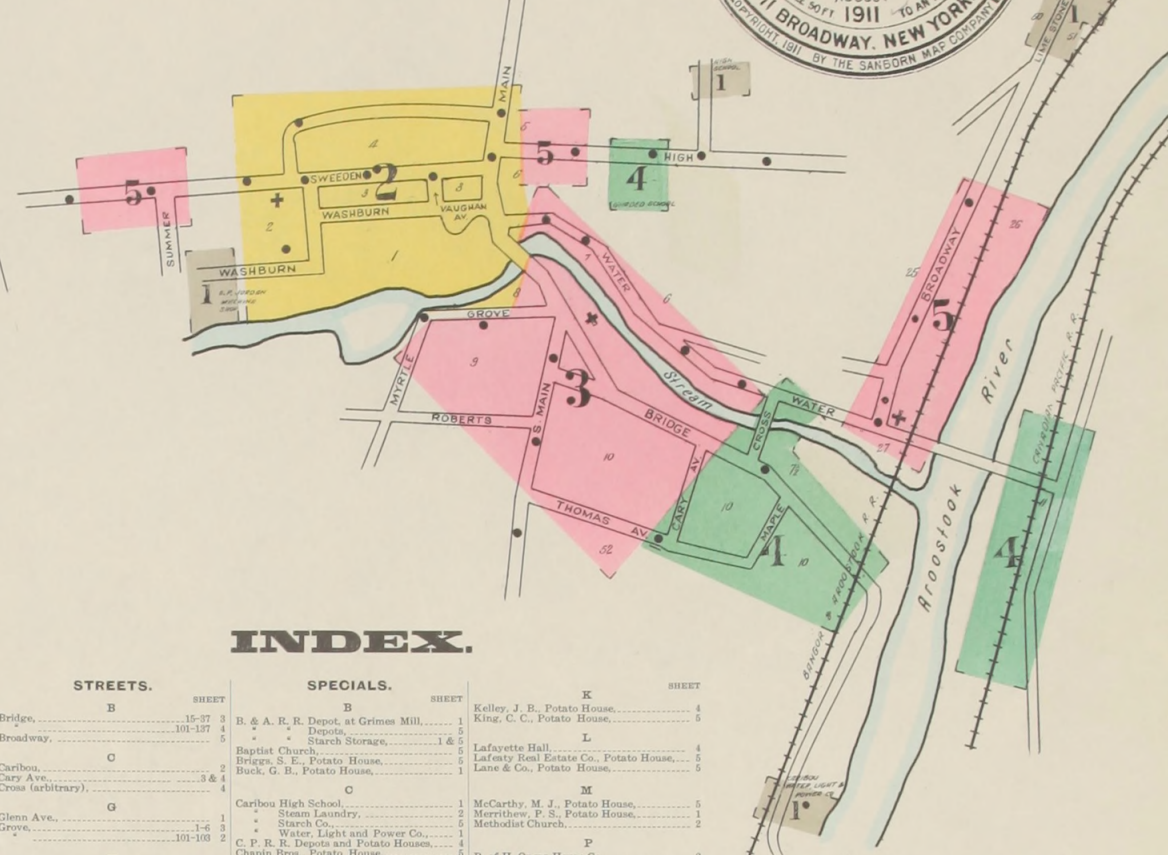
This Book is brought to you for free and open access by DigitalCommons@UMaine. It has been accepted for inclusion in Sanborn Maps of Maine by an authorized administrator of DigitalCommons@UMaine. For more information, please contact um.library.technical.services@maine.edu.



WATER FACILITIES: System owned by Caribou Water Light and Power Co. One Washington St. 4x12 and one Blake duplex pump, pump 15' along St. 237-30, 285' above pumping station through 6" main. Supply brook. River above dam 35 double trips about 7 miles of pipe, 6" 30 lbs. pressure per square inch.

FIRE DEPT: Volunteer, 3 hose companies & 1 H & L company. 24 call men, partly paid. 3 hose carts, 1 H & L truck, 3000' of 2 1/2" rubber lined hose. Bell alarm.

Town is lighted by elec. and has macadamized street in front of business section of Main St. All other streets kept in good condition.



INDEX.

STREETS.	SHEET.	SPECIALS.	SHEET.
Broadway	15-17	B. & A. R. R. Depot at Grimes Mill	1
Broadway	101-117	Depots	5
Caribou	2	Starch Storage	1 & 5
Caribou	3 & 4	Baptist Church	5
Caribou	3 & 4	Briggs, S. E. Potato House	1
Caribou	3 & 4	Buck, G. B. Potato House	1
Caribou	3 & 4	Caribou High School	1
Caribou	3 & 4	Caribou Water Light and Power Co.	1
Caribou	3 & 4	Chapin Bros. Potato House	2
Caribou	3 & 4	Collins, S. W. & Son, Saw Mill	2
Caribou	3 & 4	Corey Co. Potato House	2
Caribou	3 & 4	Corey Co. Potato House	2
Caribou	3 & 4	Court House	2
Caribou	3 & 4	Episcopal Church	3
Caribou	3 & 4	Fire Dept. Hose House, Main Street	2
Caribou	3 & 4	Fire Dept. Hose House, Sweden Street	2
Caribou	3 & 4	Forbes, F. Coal Shed	4
Caribou	3 & 4	Forbes, F. Potato House	4
Caribou	3 & 4	Frederick, T. H. Ash House	4
Caribou	3 & 4	Free Baptist Church	3
Caribou	3 & 4	Gerrard, G. W. P. Co. Potato House	5
Caribou	3 & 4	Getchell, J. S. & Son, Starch Factory	3
Caribou	3 & 4	Glenn, J. H. Coal Sheds	5
Caribou	3 & 4	Graded School	1 & 5
Caribou	3 & 4	Gray Bros. Potato House	4
Caribou	3 & 4	Hale, G. Potato House	1
Caribou	3 & 4	Hardison, G. W. Potato House	5
Caribou	3 & 4	High & Page, Planing Mill	5
Caribou	3 & 4	Hines & Smith, Potato House	5
Caribou	3 & 4	Hotel Lafayette	4
Caribou	3 & 4	Lyman	2
Caribou	3 & 4	Irving & Richer Co. Potato House	5
Caribou	3 & 4	Jerrard, G. P. W. Co. Potato House	5
Caribou	3 & 4	Jordan, S. P. Machine Shop	2
Caribou	3 & 4	Kelley, J. B. Potato House	4
Caribou	3 & 4	King, C. C. Potato House	4
Caribou	3 & 4	Lafayette Hall	4
Caribou	3 & 4	Lafayette Real Estate Co. Potato House	5
Caribou	3 & 4	Lane & Co. Potato House	5
Caribou	3 & 4	McCarthy, M. J. Potato House	5
Caribou	3 & 4	Merrithew, P. S. Potato House	1
Caribou	3 & 4	Methodist Church	2
Caribou	3 & 4	Perry's Paint Shop	2
Caribou	3 & 4	Pioneer Starch Factory Co.	1 & 4
Caribou	3 & 4	Post Office	2
Caribou	3 & 4	Prentiss, R. J. Co. Potato House	5
Caribou	3 & 4	Powers Bros. Storage	4
Caribou	3 & 4	Prentiss, R. J. Co. Storage	4
Caribou	3 & 4	Public Library	4
Caribou	3 & 4	Putnam, F. & Co. Potato House	5
Caribou	3 & 4	Roman Catholic Church	4
Caribou	3 & 4	Ross, C. Potato House	4
Caribou	3 & 4	S. C. F. Potato House	5
Caribou	3 & 4	Shaw & Milton, Potato House	4 & 5
Caribou	3 & 4	Smith & McKeown, Potato House	5
Caribou	3 & 4	G. O. Potato House	5
Caribou	3 & 4	J. S. Potato House	2
Caribou	3 & 4	J. S. Roller Mill	2
Caribou	3 & 4	O. D. Potato House	5
Caribou	3 & 4	Touque, D. S. Potato House	5
Caribou	3 & 4	Thomas, C. E. Potato House	5
Caribou	3 & 4	Vaughan House	2
Caribou	3 & 4	Universalist Church	3
Caribou	3 & 4	White, S. L. Potato House	5
Caribou	3 & 4	Woodruff, S. D. & Sons, Potato House	5

KEY

- STABLE BUILDING COLORED YELLOW ARE FRAME
- BRICK
- STONE
- IRON
- BROWN
- ADOBES
- GREEN
- SPECIALS

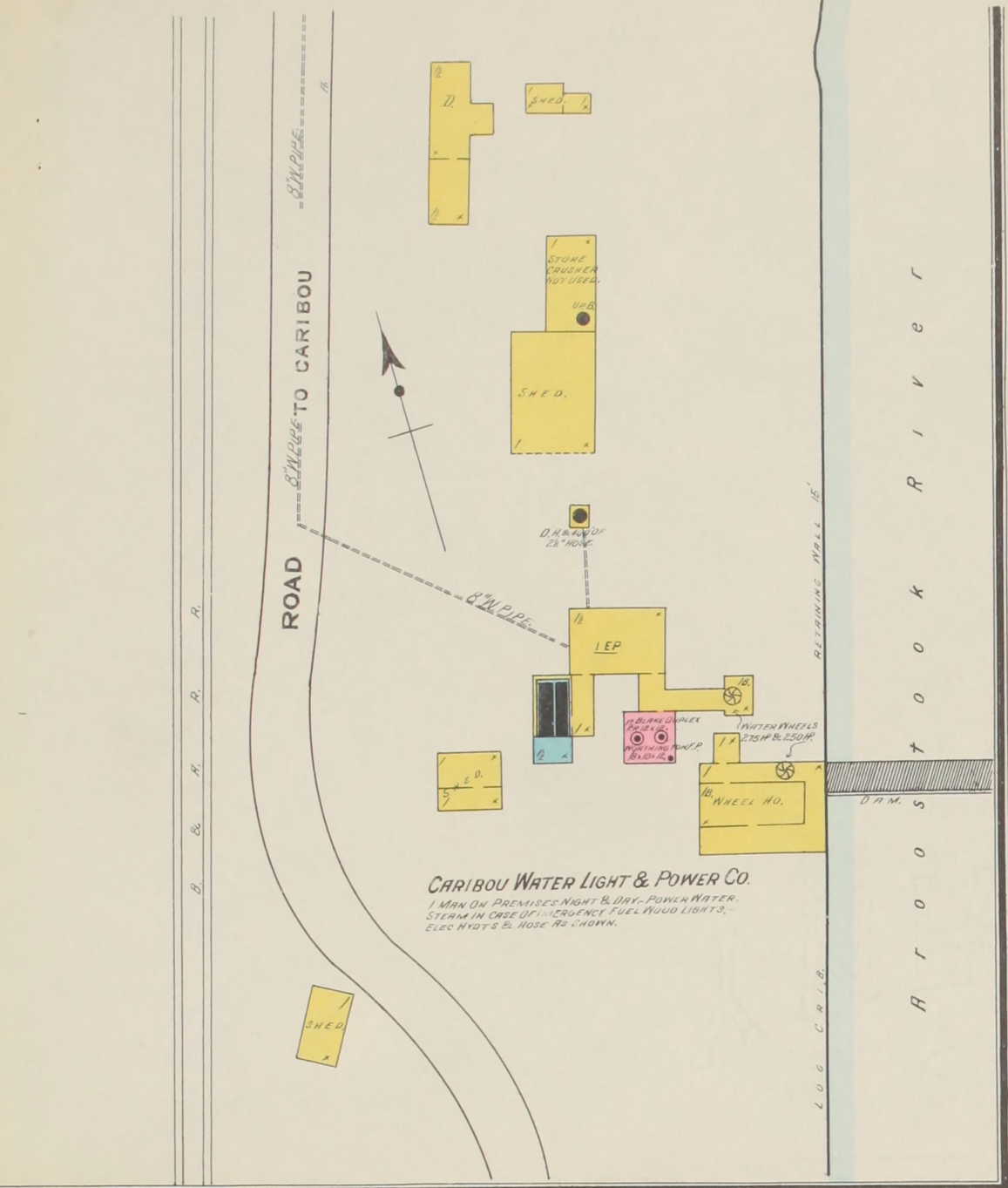
INDICATE RELATIVE HEIGHTS

FIRE STATION AS SHOWN ON KEY MAP

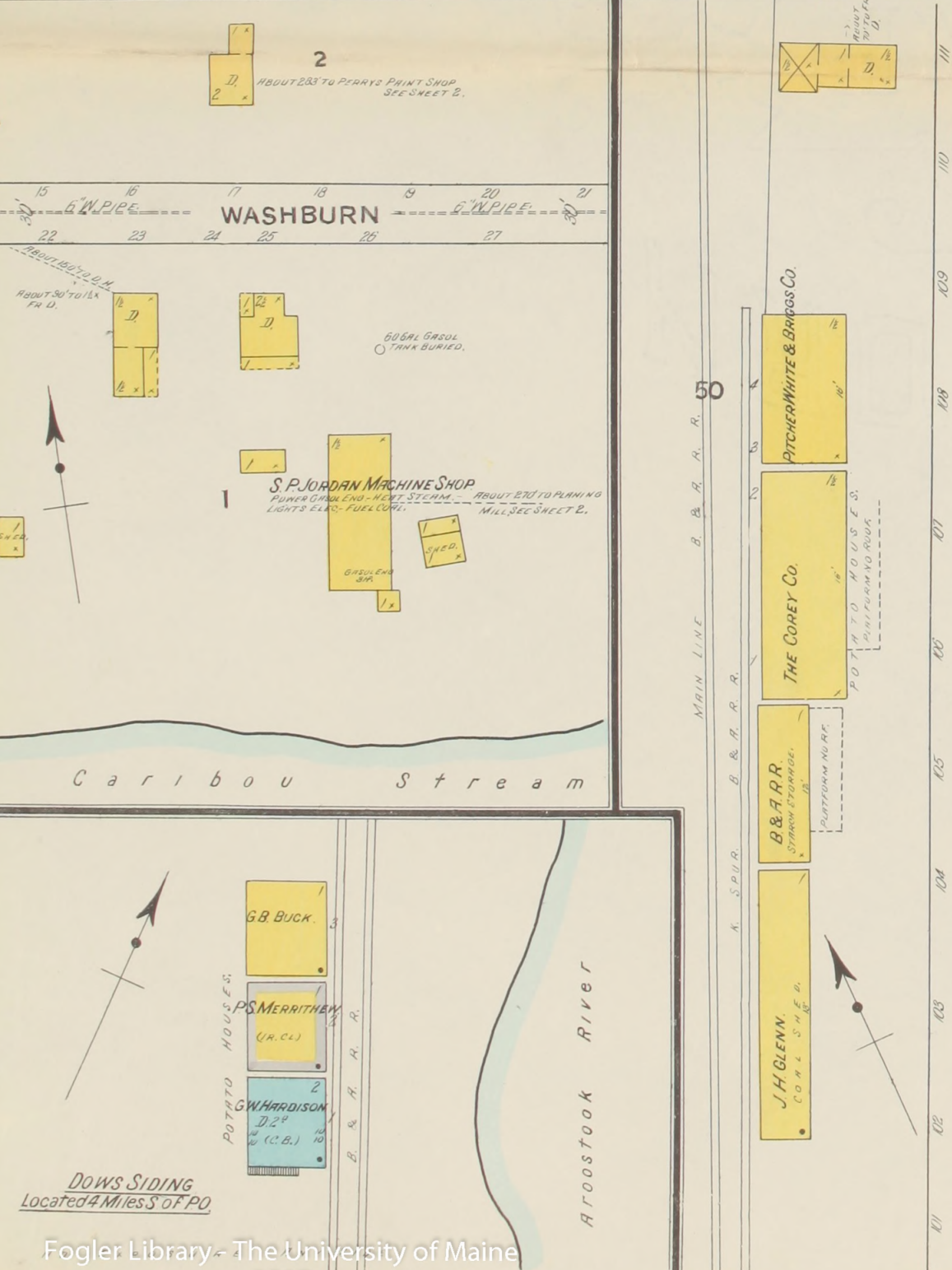
ALTERNATE STREET NUMBERS ARE ACTUAL

CONSECUTIVE STREET NUMBERS ARE ARBITRARY

NOTE.—House Numbers given are arbitrary.



CARIBOU WATER LIGHT & POWER CO.
1 MAN ON PREMISES NIGHT & DAY. POWER WATER, STEAM IN CHARGE OF ELECTRIC FUEL HOOD LIGHTS, ELEC. MOTORS & HOSE AS SHOWN.



AT GRIMES MILL,
Located 4 Miles to Caribou P.O.

Scale of Feet.
0 10 20 30 40 50 100 150