

1-1904

Caribou, 1904

Sanborn Map Company

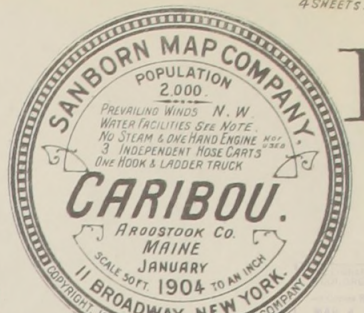
Follow this and additional works at: https://digitalcommons.library.umaine.edu/me_sanbornmaps

 Part of the [Geography Commons](#), and the [History Commons](#)

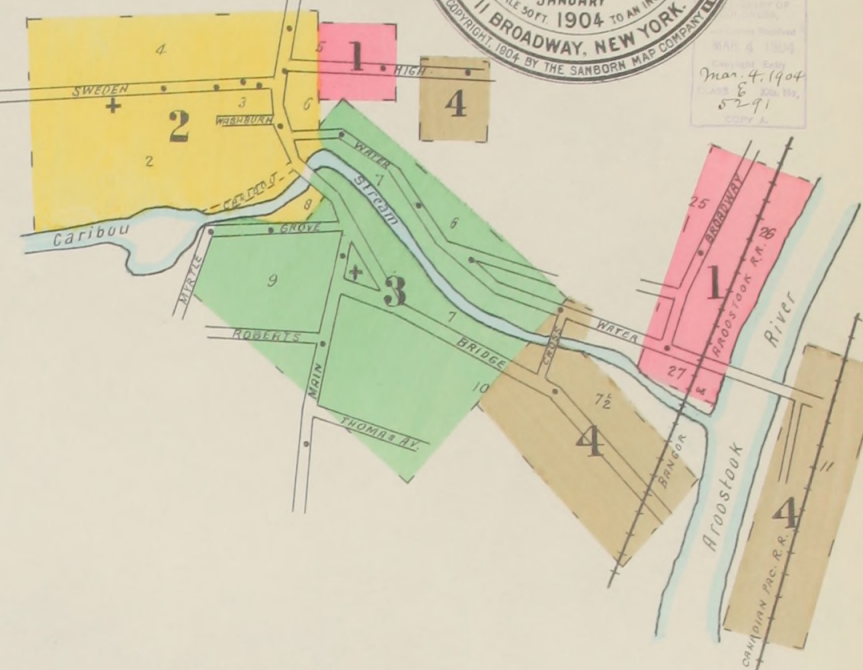
Recommended Citation

Sanborn Map Company, "Caribou, 1904" (1904). *Sanborn Maps of Maine*. 126.
https://digitalcommons.library.umaine.edu/me_sanbornmaps/126

This Book is brought to you for free and open access by DigitalCommons@UMaine. It has been accepted for inclusion in Sanborn Maps of Maine by an authorized administrator of DigitalCommons@UMaine. For more information, please contact um.library.technical.services@maine.edu.



- NOTE -
Water Facilities
ONE BUREAU PUMP CAPY ONE MILLION
GALLONS PER 24 HOURS. PUMPING STATION
2 1/2 MILE S.W. P.D. STAMP PIPE 30" X 30"
235' ABOVE PUMPING STATION. CONNECTED
WITH 5" H. W. P. 30 GAL. HYD. PRESS.
Fire Dept.
FRONTIER ONE HAZ. CO. AND ONE H. & L.
CO. 24 CHL. MEN PARTLY PAID. 3 HOSE CARS
2000' 2 1/2" HOSE. ONE H. & L. TRUCK.
FIRE PUMP SYSTEM 5 BOXES.



INDEX.

SPECIALS.		SHEET		SHEET		SHEET	
Baptist Church,.....	1	Edwards, H. A., & Co., Warehouse,...	1	Irvin & Ricker, Storage,.....	1	Shaw & Mitton, Warehouse,.....	1 & 4
B. & A. R. R. Depot,.....	1	Ellingwood Bros., Planing Mill,.....	2	King, C. C., Warehouse,.....	1	Smith, W. B., Warehouse,.....	4
Canadian Pacific R. R. Dep. & Storage, 4		Episcopal Church,.....	3	Kimball, C., & Co., Storage,.....	4	Standard Fertilizer Co., Warehouse,...	4
Caribou Hotel,.....	1	Free Baptist Church,.....	3	Lyndon, The,.....	2	Teague, D. L., Warehouse,.....	1
Roller Mills,.....	3	Starch Co.,.....	1	McCarthy, M. J., Warehouse,.....	1	Ullrich Bros., Storage,.....	1 & 4
Catholic Church,.....	4	Getchell, J. S., & Son, Plan'g Mill, &c., 2		Methodist Church,.....	2	Universalist Church,.....	3
Chapin Bros., Storage,.....	1	Glenn, J. H., Warehouse,.....	1	Vaughan Hotel,.....	2	White, S. L., Warehouse,.....	1
Collins & Spaulding, Warehouse,..... 1		Goodwin, J. O., & Co., Warehouse,..... 4					
" S. W. & Sons, Saw Mill,.....	2	Shingle & Grist Mill,.....	3				
County Court House,.....	1	High School,.....	4				
Edwards, H. A., & Co., Grist Mill,..... 2		Holmes, E. A., Starch Factory,..... 3					
		Hotel Burleigh,.....	2				
		" Lafayette,.....	4				



KEY

1 FIRE WALL 2 IN. ABY ROOF
2 METAL CORNICE
3 FIRE WALL 12 IN. ABY ROOF
4 ROOF CORNICE
5 FIRE WALL 18 IN. ABY ROOF
6 FRAME PARTITION
7 OPENING WITH IRON DOOR
8 IRON DOOR
9 WINDOWS & IRON SHUTTERS
10 WINDOW - 1ST STORY
11 WINDOWS 1" & 3" STORIES
12 2" & 4" STORIES

STABLE
BUILDINGS COLORED YELLOW ARE FRAME
RED BRICK
BLUE STONE
GRAY IRON
BROWN ADOBE
GREEN SPECIALS

(S) INDICATE RELATIVE HEIGHTS
FIRE STATION AS SHOWN ON KEY MAP
ALTERNATE STREET NOS ARE ACTUAL
CONSECUTIVE STREET NOS ARE ARBITRARY

