

9-1898

Caribou, 1898

Sanborn-Perris Map Co.

Follow this and additional works at: https://digitalcommons.library.umaine.edu/me_sanbornmaps



Part of the [Geography Commons](#), and the [History Commons](#)

Recommended Citation

Sanborn-Perris Map Co., "Caribou, 1898" (1898). *Sanborn Maps of Maine*. 127.
https://digitalcommons.library.umaine.edu/me_sanbornmaps/127

This Book is brought to you for free and open access by DigitalCommons@UMaine. It has been accepted for inclusion in Sanborn Maps of Maine by an authorized administrator of DigitalCommons@UMaine. For more information, please contact um.library.technical.services@maine.edu.

SANBORN - PERRIS MAP CO. LIMITED
 172 & 119 Broadway
 NEW YORK

Population 1,300
 No Steam & Hand Engines
 Independent Hose Carts
 Water Facilities: SEE NOTE.

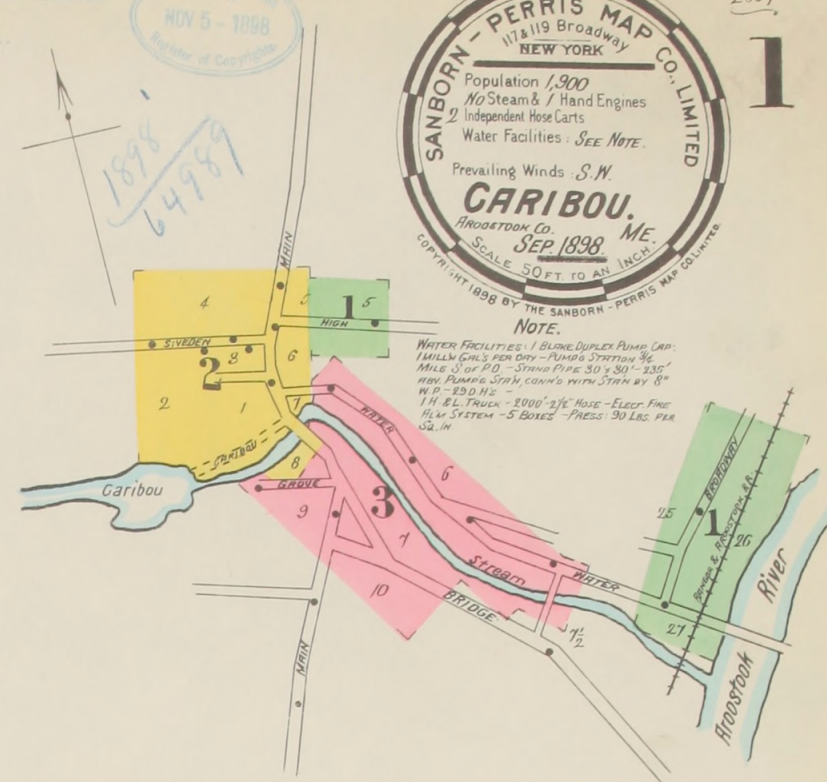
Prevailing Winds S.W.
CARIBOU, ME.
 Houghton Co.
SEP 1898
 SCALE 50 FT TO AN INCH.

COPYRIGHT 1898 BY THE SANBORN - PERRIS MAP CO. LTD.

KEY

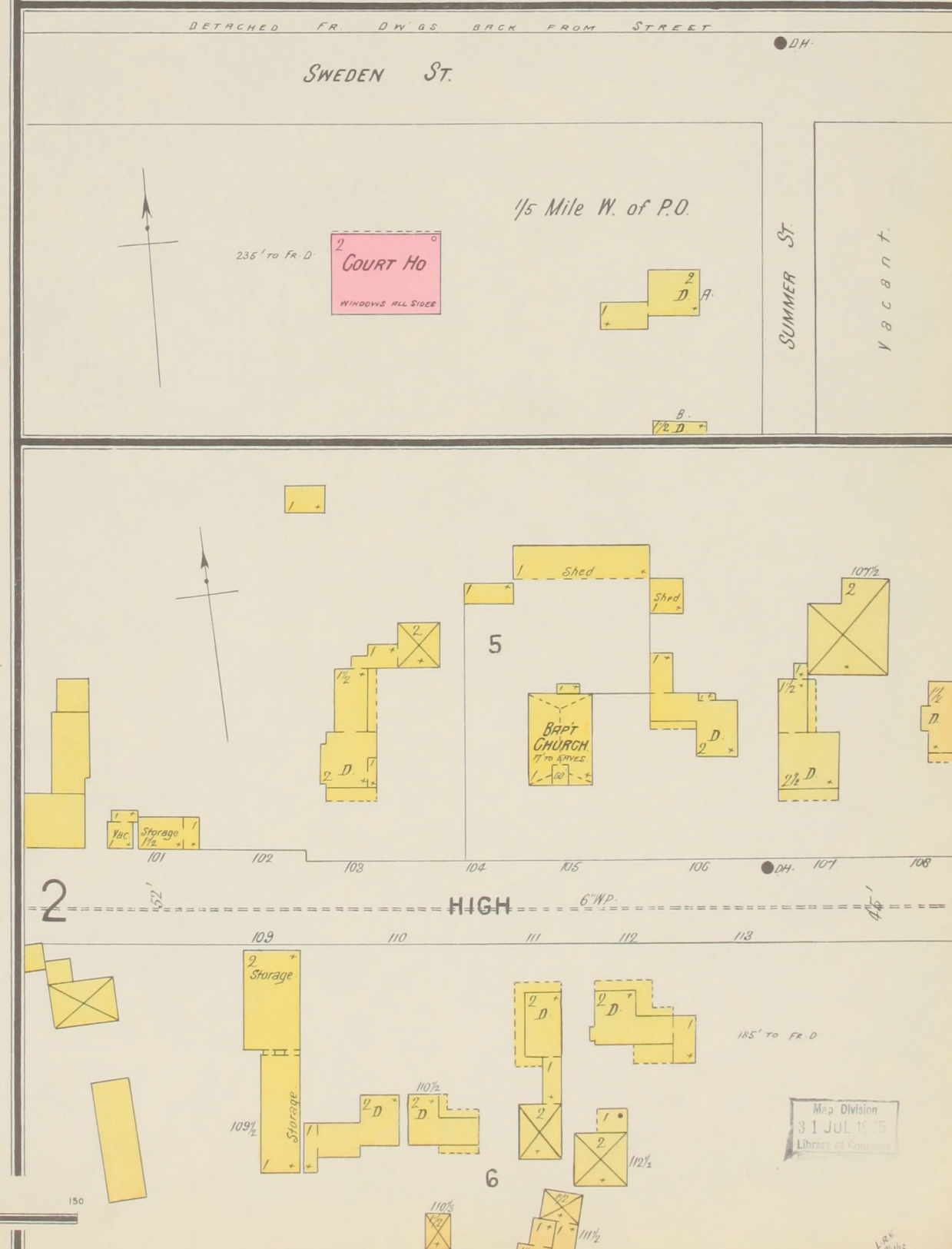
31	FIRE WALL 6 IN. AB. ROOF
12	FRONT PORCH
18	FRAME PARTITION
19	OPENING & IRON DOOR
20	WINDOWS - SHUTTERS
21	STABLE
22	WINDOW IN 1 ST STORY
23	1" & 3"
24	2" & 4"

BLDGS COLORED YELLOW ARE FRAME
 RED - BRICK
 BLUE - STONE
 GREY - IRON
 BROWN - ADOBE
 GREEN - SPECIALS
 MARKED (C) ARE CLOTH LINED
 (S) INDICATE RELATIVE HEIGHTS
 ALTERNATE STREET NOS ARE ACTUAL
 CONSECUTIVE - ARBITRARY
 BROKEN LINE NEAR BLDG - WOOD CORNICE
 SOLID - METAL



INDEX.

SPECIALS.		SECRET	SECRET
Baptist Church,.....	1	Eltingwood, G. F., & Sons, Planing Mill,...	2
B. & A. R. R. Depot,.....	1	Episcopal Church,.....	3
Canadian Pacific R. R. Depot,.....	3	G	
Caribou Starch Co.,.....	1	Getchell, J. S., & Son, Planing Mill, &c.,...	2
" Hotel,.....	2	Grimes, E. P., Storage,.....	3
" Roller Mills,.....	3	H	
Chapin Bros., Storage,.....	3	Hicks, M., Storage,.....	3
Collins, S. W., & Sons, Saw Mill,.....	2	Holmes, A., Starch Factory and Storage,...	3
County Court House,.....	1	Hotel Burleigh,.....	3
		" Lafayette,.....	3
		Irvin & Ricker, Storage,.....	3
		Iverson, O., Storage,.....	3
		Jepson, E., & Son, Storage,.....	3
		Jerrard, G., Storage,.....	3
		K	
		Kimball, C., & Co., Storage,.....	3
		L	
		Lyndon, The,.....	2
		M	
		Methodist Church,.....	2
		U	
		Ulrich Bros., Storage,.....	3
		Union Church,.....	3
		V	
		Vaughan Hotel,.....	2



Map Division
31 JUL 1935
Library of Congress