

10-1895

Belfast, 1895

Sanborn-Perris Map Co.

Follow this and additional works at: https://digitalcommons.library.umaine.edu/me_sanbornmaps



Part of the [Geography Commons](#), and the [History Commons](#)

Recommended Citation

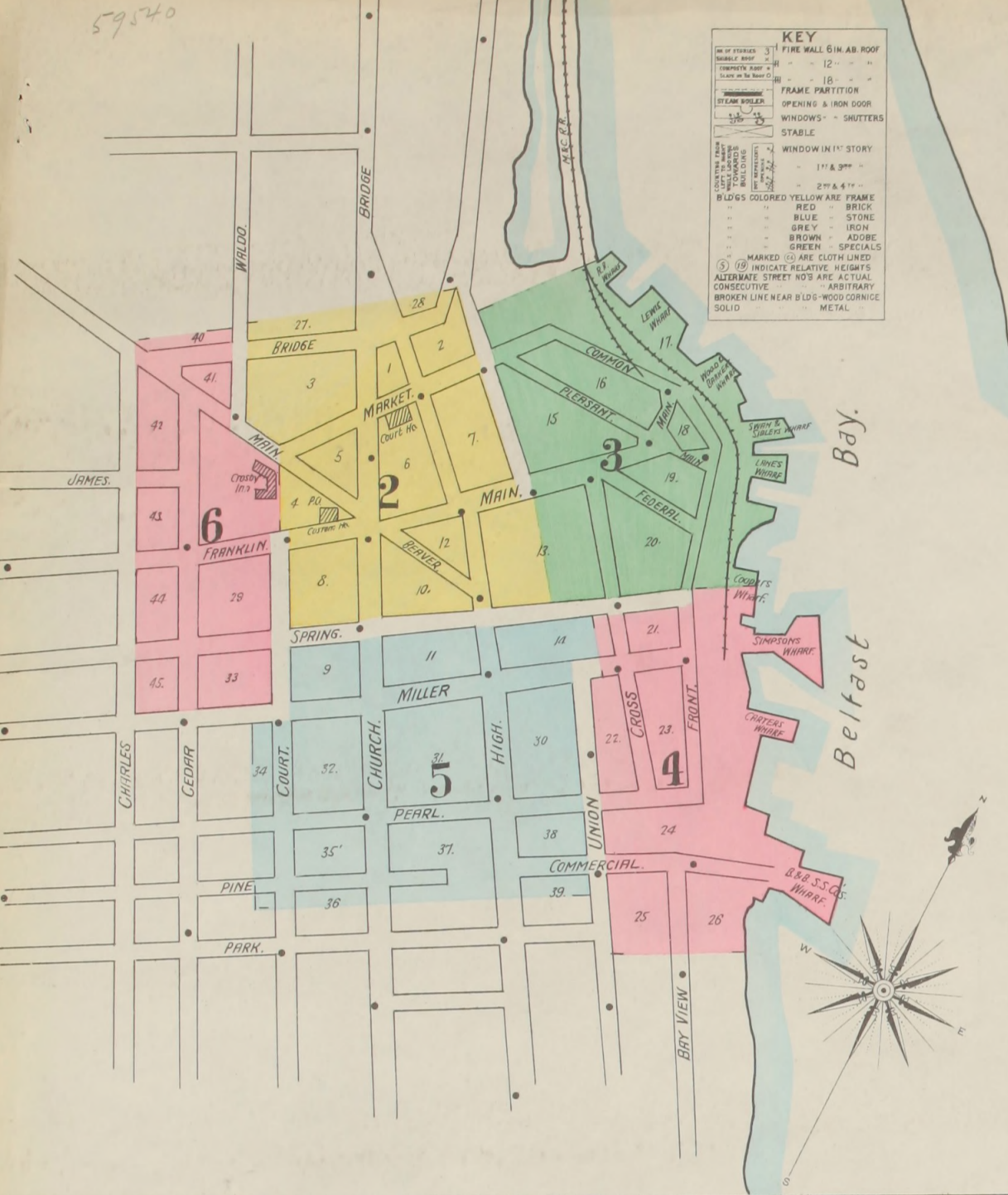
Sanborn-Perris Map Co., "Belfast, 1895" (1895). *Sanborn Maps of Maine*. 121.
https://digitalcommons.library.umaine.edu/me_sanbornmaps/121

This Book is brought to you for free and open access by DigitalCommons@UMaine. It has been accepted for inclusion in Sanborn Maps of Maine by an authorized administrator of DigitalCommons@UMaine. For more information, please contact um.library.technical.services@maine.edu.

59540

(8275) 6 Sheets.

1



NOTE.
 WATER WKS SPRINGS & WINTER 3/4 DILL
 RESERVOIR AREA 25 ACRES 10 DEEP
 SYSTEM PUMPING TO STAIN PINE CUP OF
 STAIN PINE 150000 GALLS 2 DENRE
 QUANTITY OF COMBINED CAP. OF 175000 GALLS
 ONLY CAN BE CONVD. DIRECTLY TO THE
 DISTRIBUTING SPRING. THE ONLY CONSUMPTION
 TOWER BALLS. PRESSURE 80 LBS TO 100 LBS
 PER 30 INCH IN BUSINESS PART 100 LBS HEAR
 WHIRLWES. 50 STETS (ALL 1/2 INCH COIND. 10
 6" PIPES BY 6" CONTS. 11 MILES OF PIPE 10" TO 4"
Fire Dept. VOLUNTEER 60 MEMBERS NO REGULAR
 CHL MEN 1 M.S.L. RUCK 3 HAND ENDS 3
 HOSE CHIEFS 2600 RUBBER LINED HOSE
 400 RUBBER HOSE 500 LEATHER HOSE
 4 BELL & 2 WHISTLE ALARMS.



LIBRARY OF CONGRESS
 D.C. 5 1895
 59540
 CITY OF WASHINGTON

Nov 25 1895

INDEX.

STREETS	SECT.	SECT.	SECT.
Bay View, B	1-10	4	
Beaver, B	1-46	2	
Bridge, B	47-84	6	
Cedar, C	1-18	6	
Charles, C	1-12	6	
Church, C	19-38	5	
Commercial, E, W	37-88	2	
Court, C	1-15	6	
Cross, C	2-8	2	
Federal, F	1-4	2	
Franklin, F	5-12	6	
Front, F	501-521 (arbitrary)	3	
High, H	28-59	5	
Miller, M	60-145	2	
Main, M	1-64	3	
Market, M	57-137	2	
Miller, M	120-155	6	
Pearl, E, W	E. of Union	4	
Pleasant, P	W. of Union	5 & 6	
Spring, S	1-13	3	
Spring, S	2-12	4	
Spring, S	14-30	5	
Spring, S	35-51	2	
Union, U	1-21	5	
Union, U	2-32	4	
Waldo Ave., W	near Main	6	
Washington, W	201-207 (arbitrary)	2	
Washington, W	301-306 (")	3	

SPECIALS.	SECT.	SECT.	SECT.
Baptist Church, B	5		
Belfast Electric Light Co., B	5		
Free Library, B	5		
Illuminating Co., B	5		
Machine Foundry Co., B	3		
Opera House, B	2		
Boston & Bangor Steamship Co., C	4		
Carter's Wharf & Shop, C	4		
City Block, C	2		
Cooper, M. A., Lumber Houses, C	3 & 4		
Cooper's Wharf, C	2		
County Court House, C	2		
Critchett, Sibley & Co., Shoe Factory, C	3		
Crosby Inn, C	6		
Dalton Sarsaparilla Co., D	3		
Dana Sarsaparilla Co., D	3		
Hayford's Block, H	2		
Houston, N. F., Ice Houses, H	1		
Howard, F. A., & Son Machine Shop, H	2		
Johnson Block, J	2		
Kelly, B. & Co., Edge Tool Mf'g, K	1		
Lane's Wharf, L	3		
Lewis, L	3		
M. C. E. R. Depot & Round House, M	3		
Marshall's Wharf, M	3		
Masonic Building, M	2		
Matthews Bros. Lumber Warehouse, M	3		
Planing Mill, M	2		
Memorial Building, M	2		
Methodist Episcopal Church, M	5		
Orthodox Church, O	2		
Parker & Stevens, Steam Printing, P	2		
Ploenix Hotel, P	2		
Row, P	2		
Pierce Block, P	2		
Public School, Bridge St., P	2		
Public School, Church St., P	5		
Railroad Wharf, R	3		
Rudolf's New Medical Discovery, R	3		
Sherman & Co., Edge Tool Factory, S	6		
Leather Board Factory, S	6		
Simpson's Wharf, S	4		
Skoda Discovery Co., S	2		
Small & Houston, Wool Pulling, S	6		
Swan & Sibley's Wharf, S	3		
Unitarian Church, U	2		
U. S. Custom House & P. O., U	2		
Universalist Church, U	6		
White, F. G., Coal, &c., W	3 & 4		
Windsor Hotel, W	2		
Wood & Baker's Wharf, W	3		

* Indicates only one side of Street shown.

