

12-1890

Belfast, 1890

Sanborn-Perris Map Co.

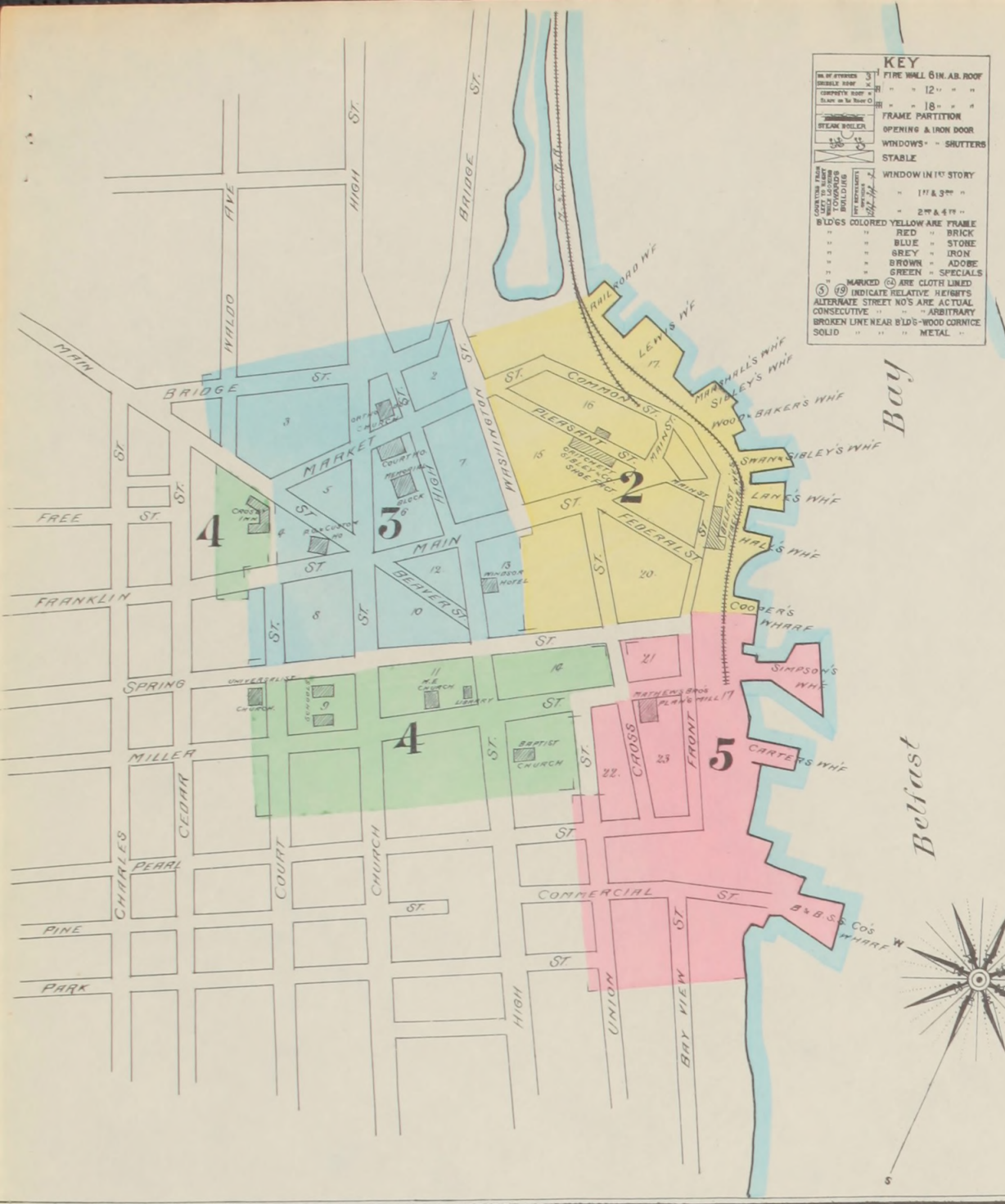
Follow this and additional works at: https://digitalcommons.library.umaine.edu/me_sanbornmaps

 Part of the [Geography Commons](#), and the [History Commons](#)

Recommended Citation

Sanborn-Perris Map Co., "Belfast, 1890" (1890). *Sanborn Maps of Maine*. 122.
https://digitalcommons.library.umaine.edu/me_sanbornmaps/122

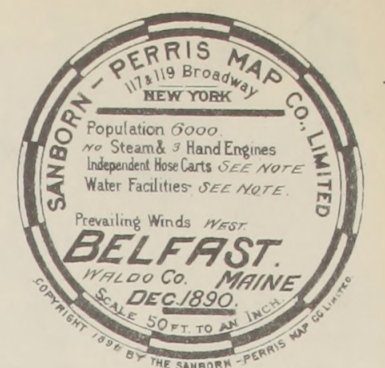
This Book is brought to you for free and open access by DigitalCommons@UMaine. It has been accepted for inclusion in Sanborn Maps of Maine by an authorized administrator of DigitalCommons@UMaine. For more information, please contact um.library.technical.services@maine.edu.



INDEX.

STREETS.		INDEX	
Bay View	1-10	5	
Beaver	7-50	3	
Bridge	1-12	2	
Church	N. of Spring	3	
Commercial	S. "	4	
Common	1-12	2	
Court	N. of Spring	2	
Cross	S. "	4	
Federal	N. "	4 & 5	
Franklin	N. of Spring	3 & 4	
Front	N. "	3	
High	S. "	5	
Main	N. of Spring	3	
Market	S. "	4	
Miller	N. of Spring	3	
Pearl	N. of Spring	3	
Pleasant	N. of Spring	3	
Spring	N. of Spring	3	
Union	N. of Spring	3	
Waldo Ave.	N. of Spring	3	
Washington	N. of Spring	3	

SPECIALS.		INDEX	
Baptist Church	4		
Belfast Electric Light Co.	1		
Free Library	4		
Gas Light Co.	3		
Machine Works	3		
Opera House	3		
White, F. G., Coal, &c.	5		
Windsor Hotel	3		
Wood & Baker's Wharf	2		



Fire Department.
 VOLUNTEER 27 MEMBERS & 85 CALL MEN.
 2 HOOD & LADDER TRUCKS.
 3 HAND ENGINES. 5 HOSE CARRIAGES.
 850 FT. RUBBER LINED HOSE.
 750 - COTTON "
 600 - RUBBER "
 500 - LEATHER "
 4 BELL & WHISTLE ALARMS

Water Works.
 SPRINGS & WATER SHED FILL A RESERVOIR
 AREA 165 ACRES, 30 FEET DEEP.
 SYSTEM PUMPING TO STANDPIPE.
 CAPACITY OF STANDPIPE, 250 GALLONS.
 4 DEAN PUMPS OF COMBINED CAPACITY OF
 20000 GALLONS DAILY, CAN BE CONNECTED
 DIRECTLY TO THE DISTRIBUTING MAINS.
 AVERAGE DAILY CONSUMPTION 100000 GALLONS
 PRESSURE 80 TO 100 LBS TO 50 IN. IN BUSINESS
 PART 15 LBS NEAR WHARVES.
 50 HYDRANTS (ALL HYDRANTS CONNECTED TO
 6" PIPES BY 6" CONNECTIONS.)
 10 MILES OF PIPE (10" TO 6")

3897 W

