

11-1901

Searsport, 1901

Sanborn-Perris Map Co.

Follow this and additional works at: https://digitalcommons.library.umaine.edu/me_sanbornmaps



Part of the [Geography Commons](#), and the [History Commons](#)

Recommended Citation

Sanborn-Perris Map Co., "Searsport, 1901" (1901). *Sanborn Maps of Maine*. 113.
https://digitalcommons.library.umaine.edu/me_sanbornmaps/113

This Book is brought to you for free and open access by DigitalCommons@UMaine. It has been accepted for inclusion in Sanborn Maps of Maine by an authorized administrator of DigitalCommons@UMaine. For more information, please contact um.library.technical.services@maine.edu.

INDEX.

SPECIALS.

B	Baptist Church	3
C	Congregational Church	2
L	Lane, S. H., Wharf	3
M	Masonic Hall	2
	Merrill, T. T., Sons, P'g & G'st-mill	3
	Methodist Episcopal Church	2
N	Nickerson, A. J., Wharf	1
P	Pike Bros., Spool Fac. & Grist-mill	1
S	Searsport Ho.	3
T	Town Ho.	2
	Trundy, A. E., Lumber Sheds	1
U	Union Hall	2



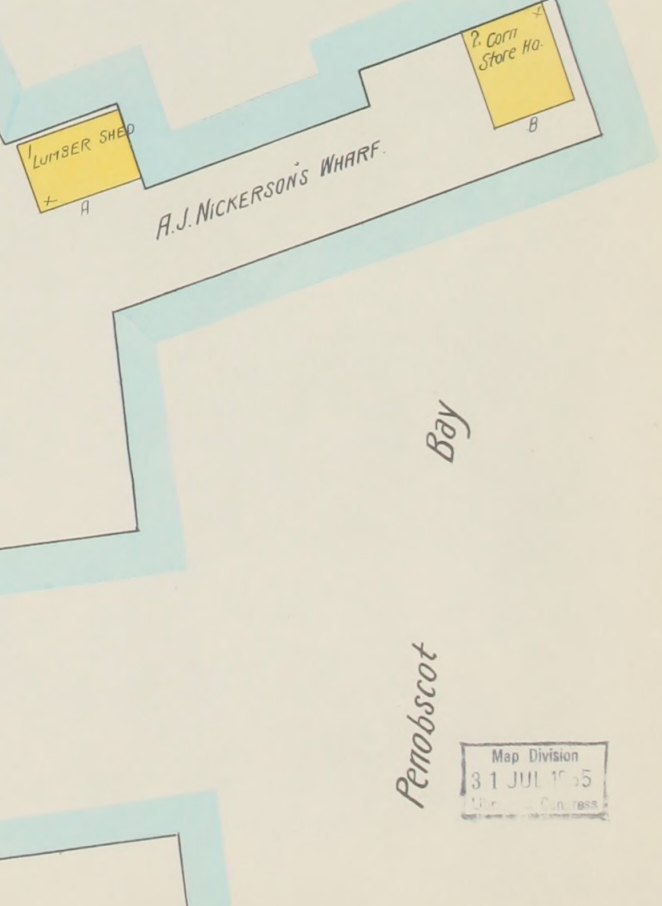
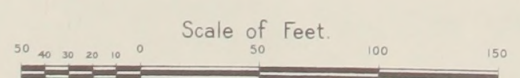
NOTE.
 FIRE DEPT. VOLUNTEER, 60 MEMBERS.
 2 HOSE CARTS AND 1500' 2 1/2" HOSE, TWO WHISTLES AND 3 BELL BLANKETS. 6 RESERVOIRS FED BY SPRINGS. COMBINED ONLY CAPS, HADDOCKS.

THE LIBRARY OF CONGRESS
 Two Copies Received
 JAN. 27 1902
 Copyright 1901
 Jan 27 1902
 CLASS. 7-2263. NO. 1370
 D.C.P.C.



KEY

(Symbol)	FIRE WALL 2 IN. ABV. ROOF
(Symbol)	METAL CORNICHE
(Symbol)	FIRE WALL 2 IN. ABV. ROOF
(Symbol)	WOOD CORNICHE
(Symbol)	FIRE WALL 1 1/2 IN. ABV. ROOF
(Symbol)	FRAME PARTITION
(Symbol)	OPENING WITH IRON DOOR
(Symbol)	" " "STANDARD"
(Symbol)	IRON DOOR
(Symbol)	WINDOWS & IRON SHUTTERS
(Symbol)	WINDOW - 1ST STORY
(Symbol)	WINDOWS 1 1/2 & 3 STORIES
(Symbol)	" " 2 1/2 & 4 1/2 "
(Symbol)	STABLE
(Symbol)	BUILDINGS COLORED YELLOW ARE FRAME
(Symbol)	" " RED BRICK
(Symbol)	" " BLUE STONE
(Symbol)	" " GRAY IRON
(Symbol)	" " BROWN ADOBE
(Symbol)	" " GREEN SPECIALS
(Symbol)	(Circled S) INDICATE RELATIVE HEIGHTS.
(Star)	FIRE STATION, AS SHOWN ON KEY MAP.
(Symbol)	ALTERNATE STREET NUMBERS ARE ACTUAL
(Symbol)	CONSECUTIVE STREET NOS ARE ARBITRARY.



Map Division
 31 JUL 1915