

1914

Ellsworth, 1914

Sanborn Map Company

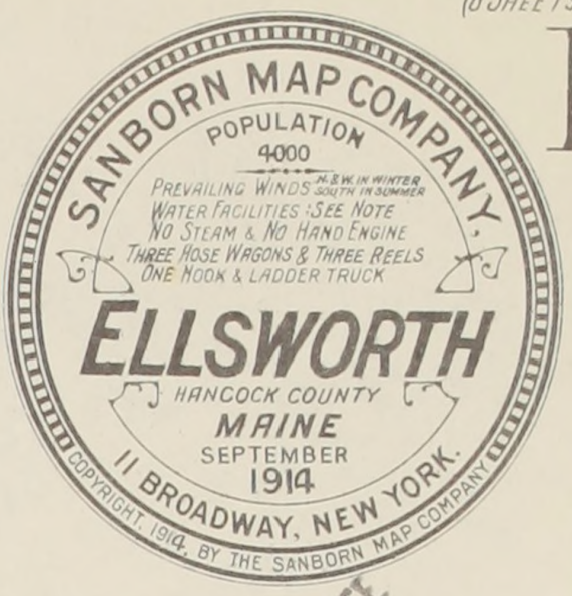
Follow this and additional works at: https://digitalcommons.library.umaine.edu/me_sanbornmaps

 Part of the [Geography Commons](#), and the [History Commons](#)

Recommended Citation

Sanborn Map Company, "Ellsworth, 1914" (1914). *Sanborn Maps of Maine*. 106.
https://digitalcommons.library.umaine.edu/me_sanbornmaps/106

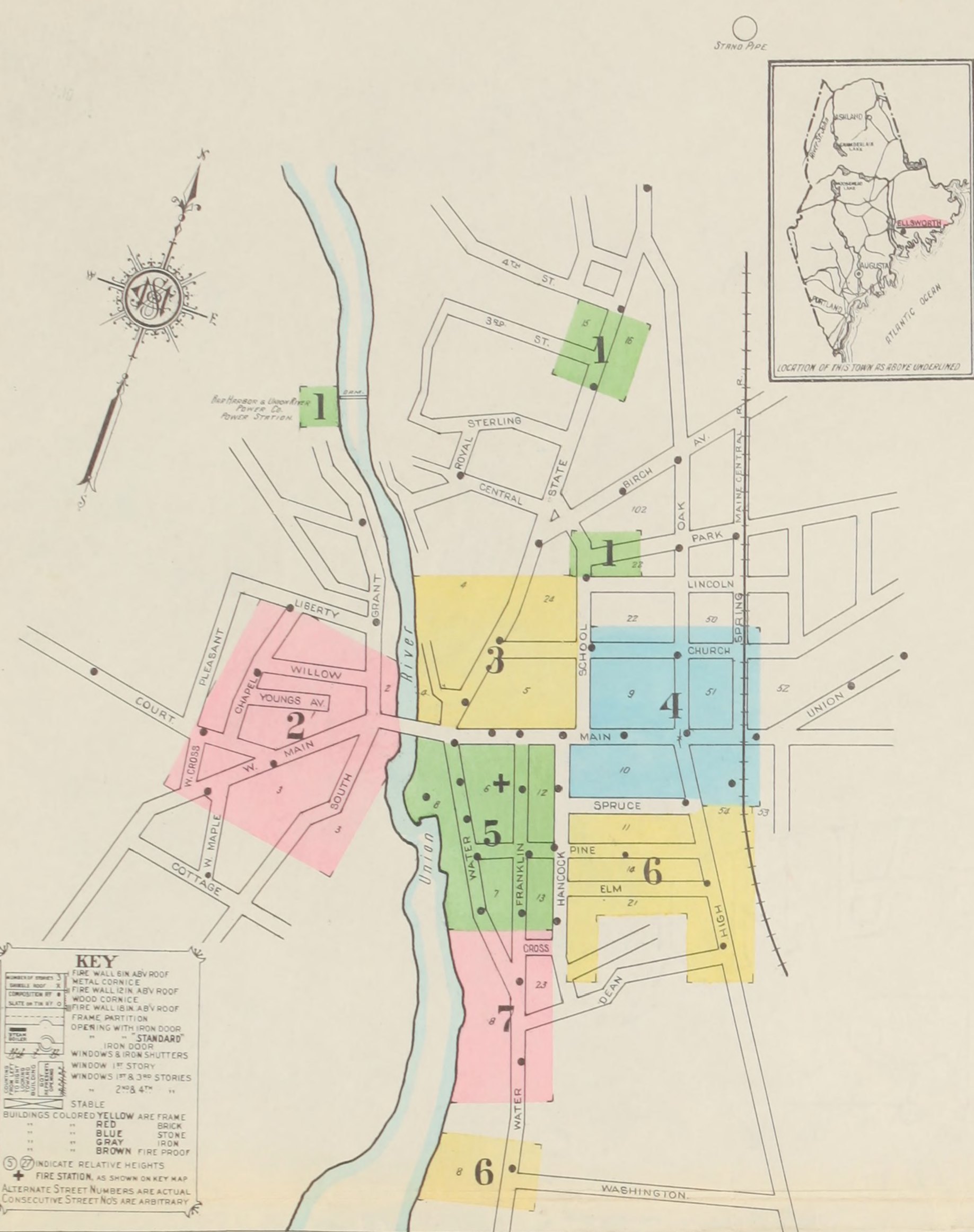
This Book is brought to you for free and open access by DigitalCommons@UMaine. It has been accepted for inclusion in Sanborn Maps of Maine by an authorized administrator of DigitalCommons@UMaine. For more information, please contact um.library.technical.services@maine.edu.



WATER FACILITIES: Water works owned by Bar Harbor & Union River Power Co. Gravity system from 300,000 gallon stand pipe 1 1/2 miles North of Post Office. Base of stand pipe is elevated 175 above same. Supply pumped from Branch Pond Stream to stand pipe by Deane duplex electric pump 18" x 12" x 14" capacity 1 million gallons per 24 hours. Laidlaw-Dunn-Gordon pump 16" x 9" x 12" in reserve, capacity 720,000 gallons per 24 hours. Pressure at Post Office 100 pounds. Average daily consumption 625,000 gallons. 8 miles 4" to 10" pipe, 57 hydrants.

FIRE DEPT: Chief, 2 assistants, 2 companies, 2 permanent men, 2 horses, 20 call men. 1 ladder truck, 3 hose wagons, 3 hose reels, 6000' 2 1/2" hose in good condition. 6 hand chemical extinguishers. Fire alarms: bell on fire stations.

Topography: hilly. Streets: not paved. Public lights: electric. No fire limits.



INDEX

Table with columns for Streets, M, Y, and H, listing addresses and corresponding sheet numbers. Includes a 'SPECIALS' section for specific buildings.

NOTE.—House Numbers given are arbitrary.

