

1907

Ellsworth, 1907

Sanborn Map Company

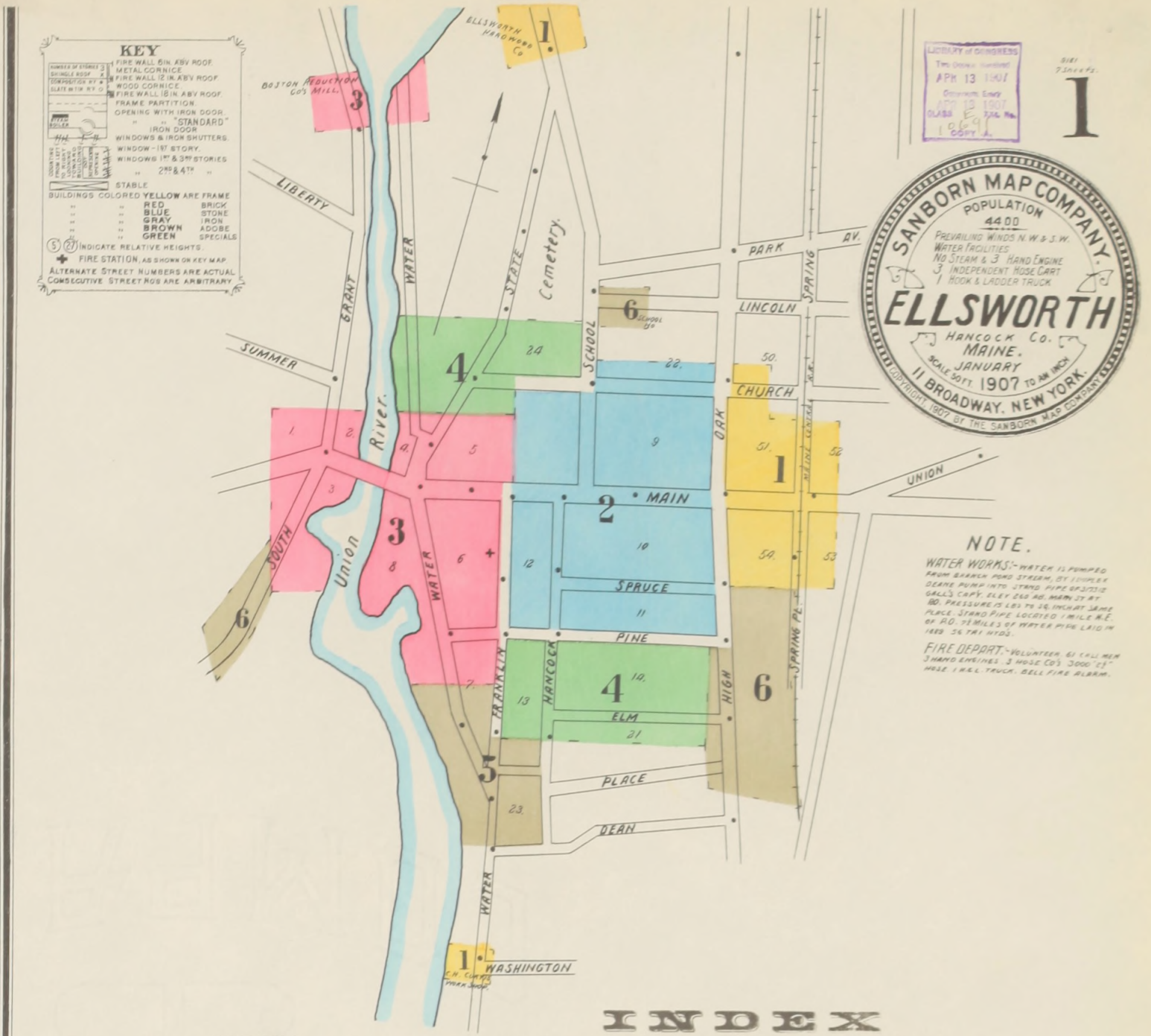
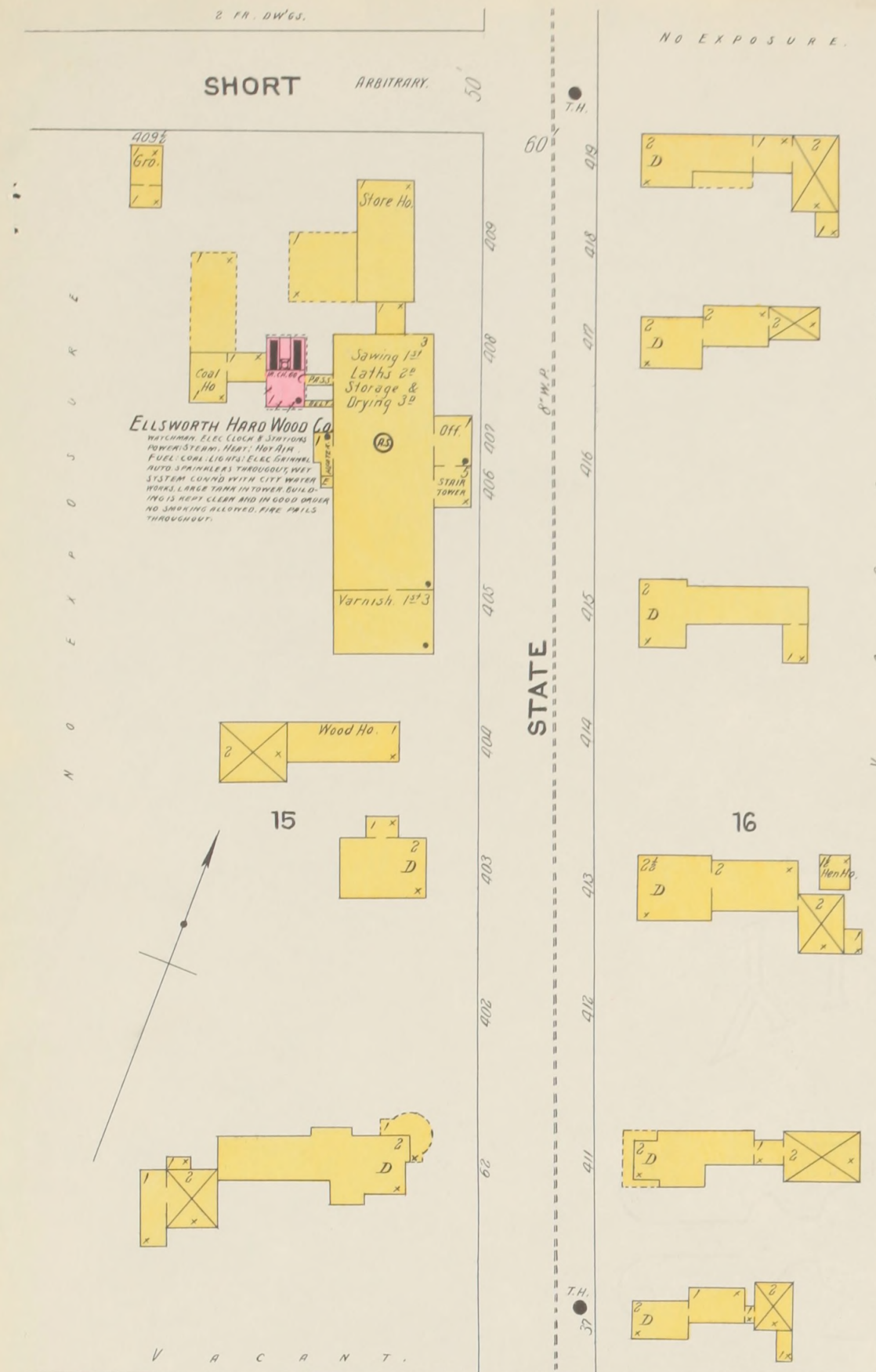
Follow this and additional works at: https://digitalcommons.library.umaine.edu/me_sanbornmaps

 Part of the [Geography Commons](#), and the [History Commons](#)

Recommended Citation

Sanborn Map Company, "Ellsworth, 1907" (1907). *Sanborn Maps of Maine*. 107.
https://digitalcommons.library.umaine.edu/me_sanbornmaps/107

This Book is brought to you for free and open access by DigitalCommons@UMaine. It has been accepted for inclusion in Sanborn Maps of Maine by an authorized administrator of DigitalCommons@UMaine. For more information, please contact um.library.technical.services@maine.edu.



INDEX

STREETS	NUMBER	STREETS	NUMBER
Banger Road	201-207	High	2-10
Church	1-15	Lincoln	12-23 actual
Main	2-14	Main, at Ellsworth Falls	301-314 arbitrary
Court	16-35 actual	Main E.	2-43 actual
Cross	36-39	State	10-77
S. of Court	1-10 actual	W. of Cross	78-99
Mill	15-25 arbitrary	W. of Cross	1-14
Oak	25-30	W. of Cross	15-25 arbitrary
Falls	15-35 arbitrary	W. of Cross	1-19
Franklin	1-27	W. of Cross	2-20
Grant	2-14	W. of Cross	2-5 actual
Hancock	16-24	W. of Cross	6-30
Hancock	26-101	W. of Cross	7-31
Hancock	29-33	W. of Cross	32-35 actual
High	1-11	W. of Cross	2-6
		W. of Cross	1-12 actual
		W. of Cross	13-22
		W. of Cross	4
		W. of Cross	6
		W. of Cross	1
		W. of Cross	2
		W. of Cross	3
		W. of Cross	4
		W. of Cross	5
		W. of Cross	6
		W. of Cross	7
		W. of Cross	8
		W. of Cross	9
		W. of Cross	10
		W. of Cross	11
		W. of Cross	12
		W. of Cross	13
		W. of Cross	14
		W. of Cross	15
		W. of Cross	16
		W. of Cross	17
		W. of Cross	18
		W. of Cross	19
		W. of Cross	20
		W. of Cross	21
		W. of Cross	22
		W. of Cross	23
		W. of Cross	24
		W. of Cross	25
		W. of Cross	26
		W. of Cross	27
		W. of Cross	28
		W. of Cross	29
		W. of Cross	30
		W. of Cross	31
		W. of Cross	32
		W. of Cross	33
		W. of Cross	34
		W. of Cross	35
		W. of Cross	36
		W. of Cross	37
		W. of Cross	38
		W. of Cross	39
		W. of Cross	40
		W. of Cross	41
		W. of Cross	42
		W. of Cross	43
		W. of Cross	44
		W. of Cross	45
		W. of Cross	46
		W. of Cross	47
		W. of Cross	48
		W. of Cross	49
		W. of Cross	50
		W. of Cross	51
		W. of Cross	52
		W. of Cross	53
		W. of Cross	54
		W. of Cross	55
		W. of Cross	56
		W. of Cross	57
		W. of Cross	58
		W. of Cross	59
		W. of Cross	60
		W. of Cross	61
		W. of Cross	62
		W. of Cross	63
		W. of Cross	64
		W. of Cross	65
		W. of Cross	66
		W. of Cross	67
		W. of Cross	68
		W. of Cross	69
		W. of Cross	70
		W. of Cross	71
		W. of Cross	72
		W. of Cross	73
		W. of Cross	74
		W. of Cross	75
		W. of Cross	76
		W. of Cross	77
		W. of Cross	78
		W. of Cross	79
		W. of Cross	80
		W. of Cross	81
		W. of Cross	82
		W. of Cross	83
		W. of Cross	84
		W. of Cross	85
		W. of Cross	86
		W. of Cross	87
		W. of Cross	88
		W. of Cross	89
		W. of Cross	90
		W. of Cross	91
		W. of Cross	92
		W. of Cross	93
		W. of Cross	94
		W. of Cross	95
		W. of Cross	96
		W. of Cross	97
		W. of Cross	98
		W. of Cross	99
		W. of Cross	100

NOTE: * Indicates only one side of street shown.

