

1901

## Ellsworth, 1901

Sanborn-Perris Map Co.

Follow this and additional works at: [https://digitalcommons.library.umaine.edu/me\\_sanbornmaps](https://digitalcommons.library.umaine.edu/me_sanbornmaps)



Part of the [Geography Commons](#), and the [History Commons](#)

---

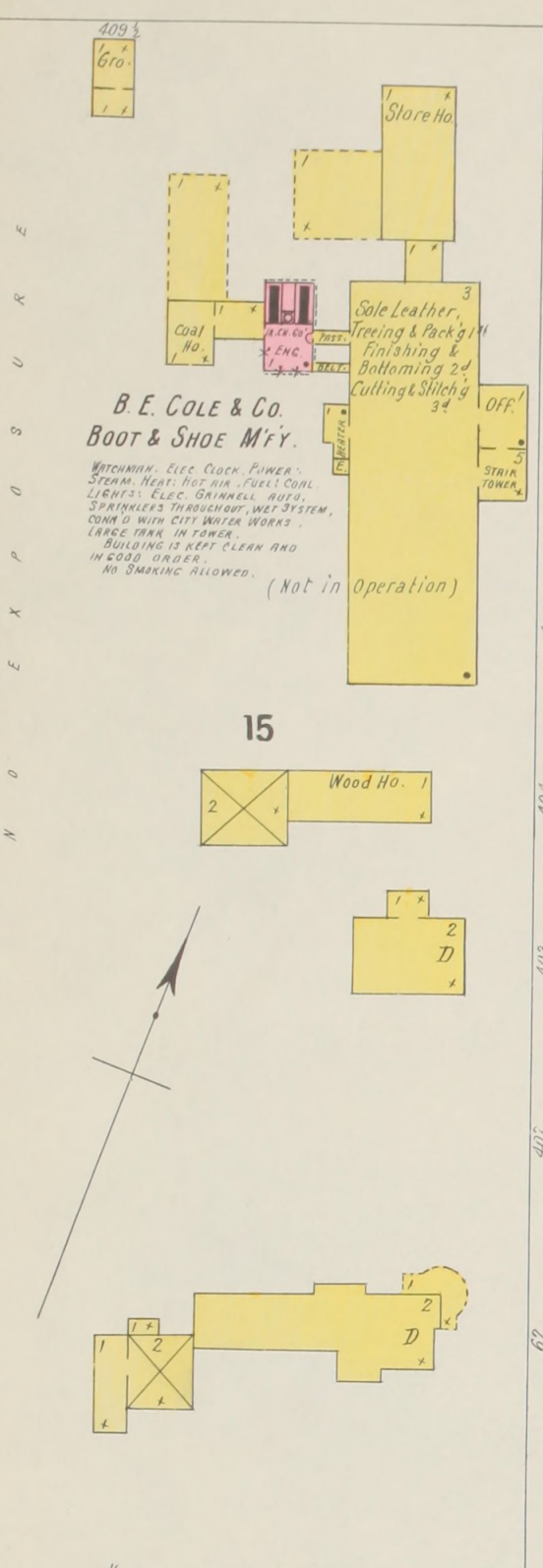
### Recommended Citation

Sanborn-Perris Map Co., "Ellsworth, 1901" (1901). *Sanborn Maps of Maine*. 108.  
[https://digitalcommons.library.umaine.edu/me\\_sanbornmaps/108](https://digitalcommons.library.umaine.edu/me_sanbornmaps/108)

This Book is brought to you for free and open access by DigitalCommons@UMaine. It has been accepted for inclusion in Sanborn Maps of Maine by an authorized administrator of DigitalCommons@UMaine. For more information, please contact [um.library.technical.services@maine.edu](mailto:um.library.technical.services@maine.edu).



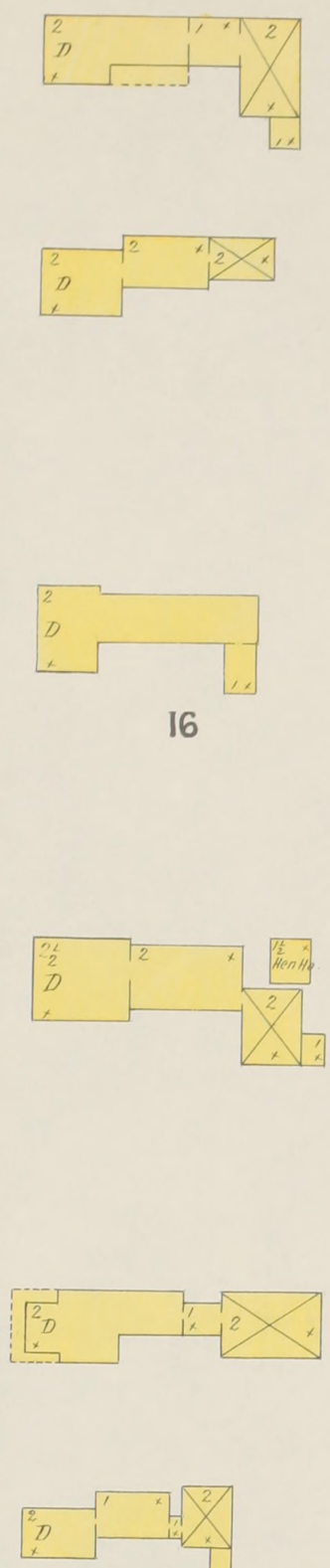
SHORT (ARBITRARY)



**B. E. COLE & CO.**  
BOOT & SHOE M'FY.  
WATCHMAN, Elec. Clock, PUMPER,  
STEAM, HEAT, HOT AIR, FUEL, COAL,  
LIFTS, Elec. SHAWMILL, HATCH,  
SPRINKLERS THROUGHOUT, WET SYSTEM,  
CONN'D WITH CITY WATER WORKS,  
LARGE TANK IN TOWER,  
BUILDING IS KEPT CLEAN AND  
IN GOOD ORDER.  
NO SMOKING ALLOWED.  
(Not in Operation)

STATE

NO EXPOSURE



**KEY**

- FIRE WALL, GIN ABV. ROOF
- METAL CORNICHE
- STONE WALL, GIN ABV. ROOF
- WOOD CORNICHE
- FIRE WALL, GIN ABV. ROOF
- STANDARD
- OPENING WITH IRON DOOR
- IRON DOOR
- WINDOWS & IRON SHUTTERS
- WINDOW - 1ST STORY
- WINDOWS 1ST & 2ND STORIES
- 2ND & 4TH
- STABLE
- BUILDINGS COLORED YELLOW ARE FRAME
- RED BRICK
- BLUE STONE
- GRAY IRON
- BROWN ADobe
- GREEN SPECIALS
- (S) INDICATE RELATIVE HEIGHTS
- (+ ) FIRE STATION, AS SHOWN ON KEY MAP
- ALTERNATE STREET NUMBERS ARE ACTUAL
- CONSECUTIVE STREET NOS ARE ARBITRARY



**SANBORN - PERRIS MAP CO. LIMITED**  
11 Broadway  
NEW YORK

Population 4400  
No Steam & 3 Hand Engines  
3 Independent Hose Carts  
Water Facilities See Note.

Prevailing Winds N.W. and S.W.

**ELLSWORTH**  
HANCOCK CO. MAINE  
SCALE 50 FEET TO AN INCH  
SEPT. 1901

COPYRIGHT 1901 BY THE SANBORN - PERRIS MAP CO. LIMITED

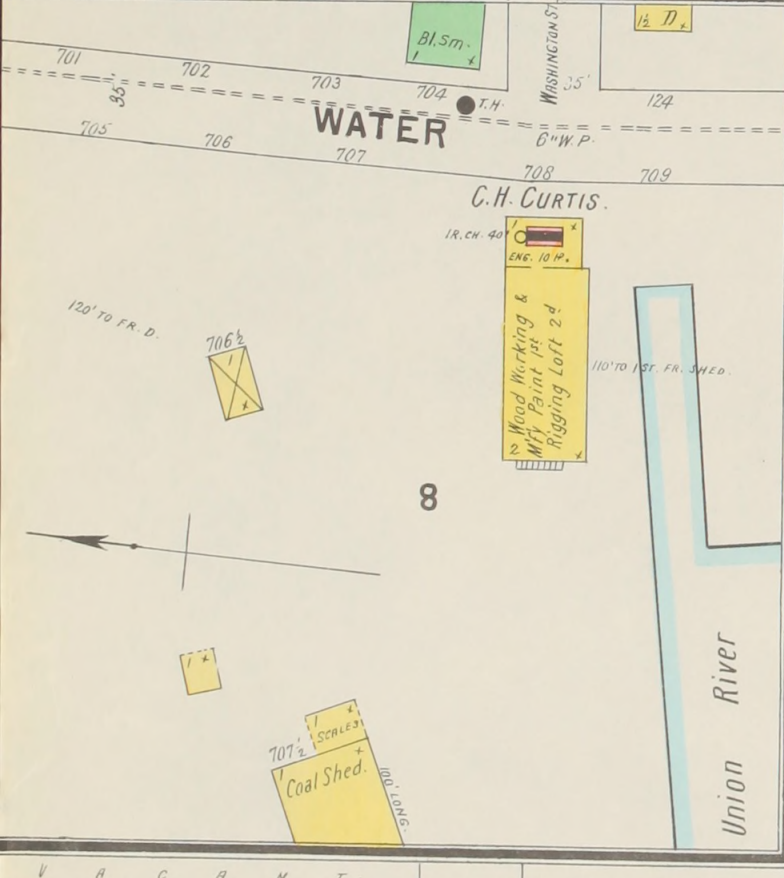
THE LIBRARY OF CONGRESS  
OCT 2 1901  
CLASS E 100  
1137  
COPY

**NOTE.**  
Water Works: Water is pumped from  
BRANCH POND STREAM, BY ONE DUPLEX DEANE  
PUMP INTO SHED PIPE OF 3 1/2" GALV.  
COPY. ELEV. 200' ABV. MAIN ST. AT P.O.  
PRESSURE 45 LBS. TO 50, INCH AT SHED PLACE.  
STAND PIPE LOCATED TWELVE MILES E. P.O.  
7 1/2 MILES OF WATER PIPES, 5" DIALYSIS.  
Fire Depart. VOLUNTEER, 61 CALL MEN,  
3 HAND ENGINES, 3 HOSE CDS,  
500' 2 1/2" HOSE, 1 W. E. L. TRUCK,  
BELL TIRE ALARM.

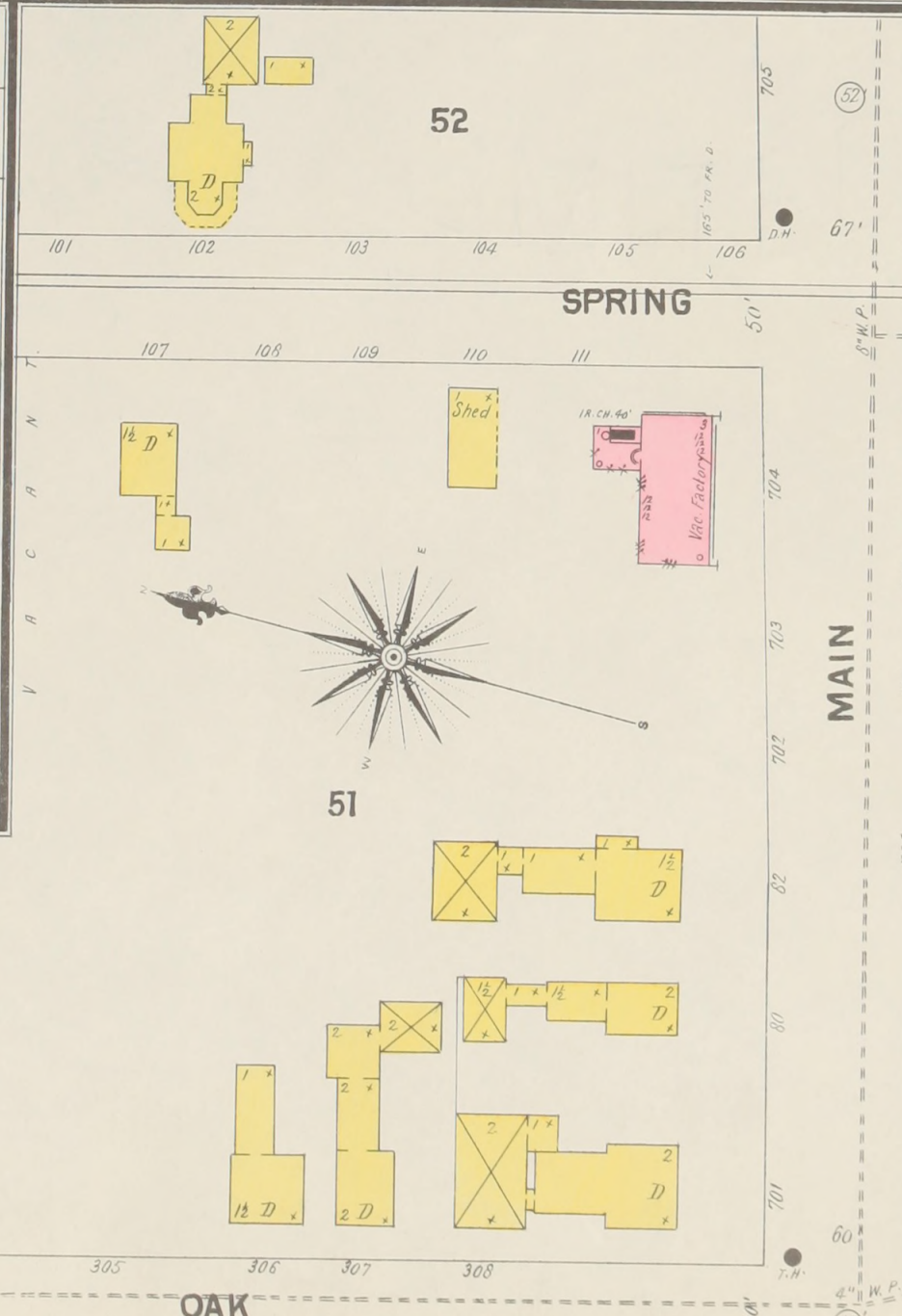
**INDEX.**

STREETS.		SPECIALS.	
SHR	NO	SHR	NO
C	Hancock, 15-26	A	American Ho., 2
Church	101-108, arbitrary	B	Bank Block, 3
High	204-215, 2	C	Cole, B. E. & Co., Boot and Shoes M'FY., 1
Cross	near Oak 1	E	Ellsworth Creamery, 4
Elm	1-26	F	First Cong'l Church & Chapel, 4
Franklin	1-35, 3	G	Greely & Brady, Mills, 3
"	18-24, 4	H	Hancock Hall, 2
"	26-119, 5	Hodgkins	L. L. Cabinet Shop and Picture Framing, 2
Grant	104-113, arbitrary	W	Whitecomb, Haynes & Co., Saw- mills, 4 & 5
Hancock	1-14	W	Whitecomb, Haynes & Co., State-mill, 5
Pine	1-14, 3		
High	1-9, 2		
Short (arbitrary)	18-33		
South	98-111, arbitrary		
Spring	101-115, 1		
State	1-24		
Oak	1-17, 1		
Water	1-48, 3		
"	501-505, arbitrary		
"	701-709, 1		
Pine	1-14, 3		
"	2-26, 2		
"	2-10, 2		
Pine	12-21, 3		
School	1-12, 2		
"	13-17, 2		
"	14-16, 4		
Baptist Church	1		
Boston Reduction Co.	3		
Club House	2		
Cole, B. E. & Co., Boot and Shoes M'FY.	1		
Combes Block	3		
County Court House and Jail	4		
Curtis, C. H., Wood-working	1		
Custom House	3		
Water	1-48, 3		
"	501-505, arbitrary		
"	701-709, 1		
Ellsworth Lum. Co., Sawmill	5		
Water Co. Office	2		
Water-works	3		
Elmwood Ho.	3		
Public Library	4		
Phillips, H. B., Brick-yard	5		
Post Office Building	3		
Steam Laundry	3		
Treworky, C. J., State-mill	5		

\* Indicates only one side of Street shown.



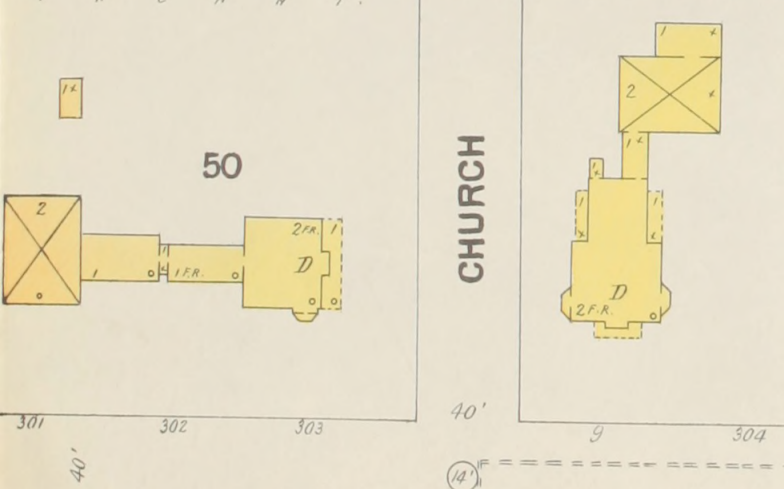
8



51



54



50