

The University of Maine

DigitalCommons@UMaine

Maine Sheet Music Collection

Public domain (may be downloaded in full)

1922

The Rosary

Ethelbert Woodbridge Nevin
Composer

W.M Clark
Lyricist

Follow this and additional works at: <https://digitalcommons.library.umaine.edu/mmb-me>

Recommended Citation

Nevin, Ethelbert Woodbridge and Clark, W.M, "The Rosary" (1922). *Maine Sheet Music Collection*. Score 96.

<https://digitalcommons.library.umaine.edu/mmb-me/96>

This Book is brought to you for free and open access by DigitalCommons@UMaine. It has been accepted for inclusion in Maine Sheet Music Collection by an authorized administrator of DigitalCommons@UMaine. For more information, please contact um.library.technical.services@maine.edu.



The Holy Hour

A Sacred Song

The Words by

W. M. Clark

Adapted to the Music of

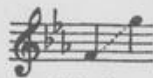
"The Rosary"

By

Athelbert Nevin

Price, 60 cents each

(In U. S. A.)



High
in Eb



→ Medium,
in C



Low
in Bb

The Boston Music Co. • Boston

Ves Me.

000440

Nev/1104

The Holy Hour

3

A Sacred Song
adapted to the music of

"The Rosary"

Words by
W. M. Clark

ETHELBERT NEVIN

Lento e religioso

Voice

This ho - ly hour, so sweet to me,

Piano

Is fraught with bless-ings man-i - fold. On bend - ed knee I dream and

poco rall.

seem to see My Sa - viour's face, His smile be - hold.

poco rall.

dolce pp

Copyright, 1922, by The Boston Music Co.

Printed in U. S. A.

B. M. Co. 6890 c

When performing and programming this number on the air, kindly give credit to THE BOSTON MUSIC COMPANY

a tempo
mp

With hands out-stretch'd, my eyes I raise To Him whose death the world re -

a tempo
mp

p

Tea Tea *

cresc.

deem'd, My voice breaks out in glo - rious praise; On me his

molto largamente

molto largamente

cresc.

Tea Tea * Tea *

mf

kind eyes beam! O won - drous Sa - viour, pre - cious

a tempo

a tempo

p quasi arpeggio dolcissimo

mf

Tea p. *

Friend, Who bought our souls at such a cost,

patetico

Tea * *Tea* * *Tea* * *Tea* * *Tea* *

mf sempre cresc. I hail Thee, now, and to the last glad end I'll bear the

f

mf sempre cresc. *f*

Tea * *Tea* *

f poco accel. *ff* *Largo pp*

Cross, Thy Cross! I'll bear the Cross.

poco accel. *f* *ff* *pp*

Tea * *Tea* * *Tea* *

ETHELBERT NEVIN

VOCAL COMPOSITIONS

Songs and Duets

SERIES ONE

Text abbreviations: e.-English; f.-French; g.-German; i.-Italian; d.-Danish; r.-Russian; sp.-Spanish
For songs marked with (*) Orchestra Accompaniment may be had from the publishers

SONGS WITH PIANO ACCOMPANIMENT

	Price (in U.S.A.)		Price (in U.S.A.)
Op. 2. A SKETCHBOOK (Songs and Piano Pieces) Complete,	.75	Op. 12. FIVE SONGS	
2 'Twas in the Lovely Month of May (e. & g.)		1 Summer Day. High, D; Med. C50
4 O Fair and Sweet and Holy (e. & g.)		2 Beat Upon Mine, Little Heart. High, E; Med., D50
6 Oh, Let Thy Tears (e. & g.)		3 In a Bower. High, Eb min.; Med., D min50
*8 Oh, That We Two Were Maying! High, Ab; Med., F; Low, Eb50	4 Little Boy Blue. High, Bb; Med., Ab50
10 In Winter I get up at Night		5 At Twilight. High, G; Med., F45
Op. 2. { 11 Of Speckled Eggs the Birdie sings } Complete,	.50	Op. 17. THREE SONGS	
12 Dark Brown is the River		1 The Rosebud. High, F; Med., Db (e. & g.)50
Op. 3. THREE SONGS (WITH ACCOMPANIMENT OF PIANO, VIOLIN AND 'CELLO)		2 Le Vase Brisé (The Vase). High, A; Med., Gb (e. & f.)50
1 Deep in a Rose's Glowing Heart. High, A; Med., G45	*3 Rapelle-toi (Remember Well). High, Ab; Med., G (e. & f.)75
2 One Spring Morning. High, E min.; Med., D min. (e. & g.)50	Op. 20. A BOOK OF TEN SONGS. High and Low Each complete,	.75
*3 Doris. High, F; Med., Eb50	1 A Fair, Good Morn. High, Eb; Low, Db50
Op. 3. THREE SONGS (WITH PIANO ACCOMPANIMENT)		2 Sleep, Little Tulip. High, Ab; Low, F50
1 Deep in a Rose's Glowing Heart. High, A; Med., G45	3 Ev'ry Night. High, Ab; Low, F35
2 One Spring Morning. High, E min.; Med., D min. (e. & g.)50	4 Airly Beacon. High, Eb; Low, C45
3 Doris. High, F; Med., D (e. & g.)50	5 When the Land Was White with Moonlight. High, E; Low, Db50
Op. 5. FIVE SONGS		6 A Song of Love. High, G; Low, Eb50
1 Autumn Sadness. High, Ab; Med., F (e. & g.)45	7 Nocturne (Up to her Chamber Window). High, F; Low, Eb50
2 La Chanson des Lavandières (April Garden). High, E min.; Med., D min. (e. & f.)45	8 Dites-moi (Tell me). High, F; Low, Eb (e. & f.)45
3 'Twas April. High, G; Med., F; Low, Eb50	9 Orsola's Song (Chantez! La nuit sera brève). High, F# min.; Low, D min. (e. & f.)50
4 Raft Song. High, F; Med., Eb50	10 In the Night. Bar., Bb min., Bass, G min. (e. & g.)50
5 Before the Daybreak. High, Gb; Med., E50		

THE BOSTON MUSIC COMPANY
BOSTON, MASS.

G. + B. HAUMAN