

6-2001

## Other Faces: The Mask Collection of Marti Stevens

Hudson Museum, Maine Center for the Arts

Follow this and additional works at: <https://digitalcommons.library.umaine.edu/ca-lectureseries>



Part of the [Higher Education Commons](#)

---

### Repository Citation

Hudson Museum, Maine Center for the Arts, "Other Faces: The Mask Collection of Marti Stevens" (2001). *Cultural Affairs Distinguished Lecture Series*. 95.

<https://digitalcommons.library.umaine.edu/ca-lectureseries/95>

This Grant Application is brought to you for free and open access by DigitalCommons@UMaine. It has been accepted for inclusion in Cultural Affairs Distinguished Lecture Series by an authorized administrator of DigitalCommons@UMaine. For more information, please contact [um.library.technical.services@maine.edu](mailto:um.library.technical.services@maine.edu).

**LECTURE SERIES COMMITTEE  
GRANT APPLICATION**

PROVIDE 10 (TEN) COPIES, INCLUDING THE ORIGINAL.  
PLEASE PLACE A COPY OF THIS COVER SHEET ON TOP OF EACH COPY

I. Applicant/Organization: Hudson Museum

II. a. Responsible Organization Officer: Stephen L. Whittington

b. Title: Director

c. Campus Address (include EMail and Telephone): Hudson Museum, Maine Center for the Arts,  
stephen@maine.edu 581-1906

III. Summary of program requiring funding (title; featured artist(s); speaker(s); scheduled date (s):

Other Faces: The Mask Collection of Marti Stevens—June 19 to September 1, 2001

Expand in fuller detail, a supporting statement with detailed, itemized budget. Funding for current application is contingent upon submission of detailed budget and attendance report for any previous years' grants.

IV. a. Total funding required for program: .....	>	\$5,571
b. Amount committed by applicant organization: .....	>	1,000
c. Amount committed by requested of (please indicate which) other funding sources: .....	>	1,786
d. Amount requested of Cultural Affairs/DLS Committee: .....	>	2,785

Signature of responsible organization officer/date: *SL Whittington* 12/11/00  
SIGNATURE DATE

SPACE BELOW FOR COMMITTEE USE:

\$ 2,785

SEND COMPLETED APPLICATION TO: CULTURAL AFFAIRS COMMITTEE  
C/O PRESIDENT'S OFFICE  
200 ALUMNI HALL

### ***Other Faces: The Mask Collection of Marti Stevens***

From June 19 to September 1, 2001, the Hudson Museum will feature *Other Faces: The Mask Collection of Marti Stevens*. This exhibit will showcase 36 masks from Africa, Asia, Indonesia, the United States, Canada, and Central American, which were donated to the Hudson Museum in 1994. *Other Faces* will explore the origins of mask making, the role of masks in allowing individuals to transform from one form to another, the cultural function of masks, and how they are used in ceremonies, theatre and dance, and celebrations.

Stevens, a Maine resident, was a prolific collector of art, objects, and artifacts, filling her home with her collections. She traveled extensively, scouring antique shops, galleries and museum stores in which to purchase her objets d'art. She was involved in the visual and performing arts, through the Skowhegan School of Art and the Cornville Players. Her collecting was an extension of her vocation, as an artist and as an actor/director, as the masks were both a means of visual expression and an integral part of performance art. It was her intention that her collection be displayed for the public at the Hudson Museum.

The exhibit will begin with a brief overview of Marti Stevens and her collecting interests, followed by an anthropological introduction to masks. The remainder of the exhibit will focus on the specific geographic and cultural areas from which the masks came. Each culture area will be explored in a separate exhibit case. Six masks, maps, photographs of the masks or similar masks being used, and text panels dealing with the function of the masks in these cultures will be presented in each exhibit case.

In conjunction with *Other Faces*, the Hudson Museum will develop a wide variety of educational programming. Offerings will include special exhibit tours and hands-on activities and a "Museum Morning" program for children in July 2001. The Museum is currently working with UMaine faculty through a Learning Circles 2001 grant project to integrate the Hudson Museum's exhibits and collections into UMaine courses. Information about this exhibit will be forwarded to appropriate faculty contacts and the Museum's staff will work with these faculty members to facilitate utilization of *Other Faces* by the University community.

*Other Faces: The Mask Collection of Marti Stevens* will serve a wide variety of audiences. Each summer over 6,000 visitors come to the Museum during regular operating hours; 1,200 elementary and secondary school children participate in guided tours and gallery programs in June; several thousand prospective students and their parents attend open houses in the Museum; University students come as part of summer course-work; and attendees of summer conferences and tourists tour the Hudson Museum.

Publicity about this exhibit and educational programs will be coordinated by the University of Maine's Office of Public Affairs, which distributes Museum press releases and calendar listings to twenty-eight newspapers and local television and radio stations. Information will be posted on the Hudson Museum's Website and on campus Web-based bulletin boards. *The Totem*, the Hudson Museum's school newsletter, which is sent to over 1,700 elementary and secondary school teachers state-wide, will feature the exhibit. A full-color postcard exhibit announcement will be sent to a targeted mailing list.

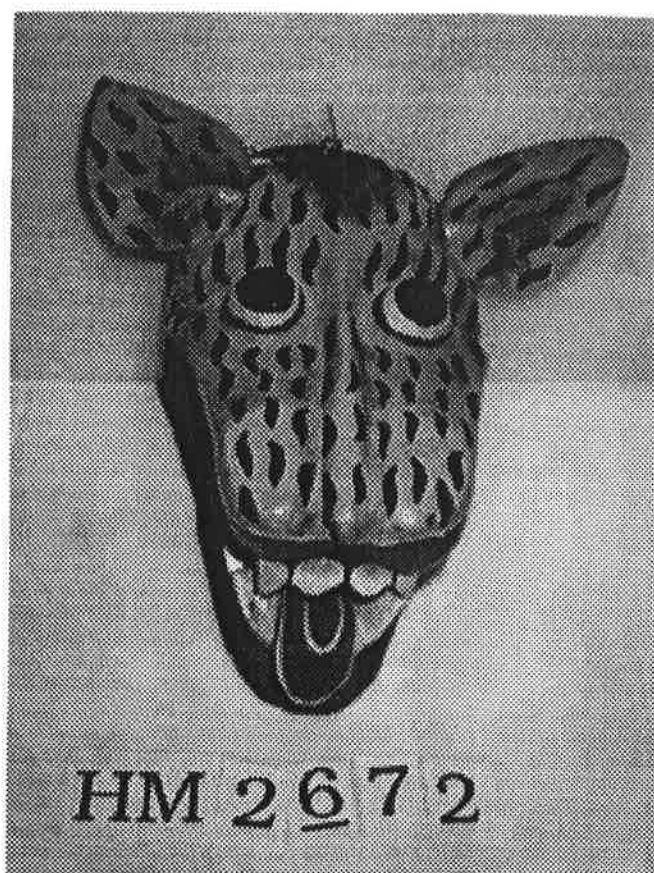
Funding needs for *Other Faces* include object preparation and conservation for the masks (\$2,150); production costs for exhibit panels and exhibit graphics (\$2,293), installation materials (\$794); printing, postage and mailing expenses for exhibit announcements (\$234) and xeroxing expenses for an exhibit brochure (\$100). The Museum seeks \$2,785 from the Cultural Affairs Committee to support *Other Faces*. The Hudson Museum will provide project match of \$1,000 and will raise an additional \$1,786, through support from the Hudson Museum Friends.

**Other Faces: Masks from the Collection of Marti Stevens**

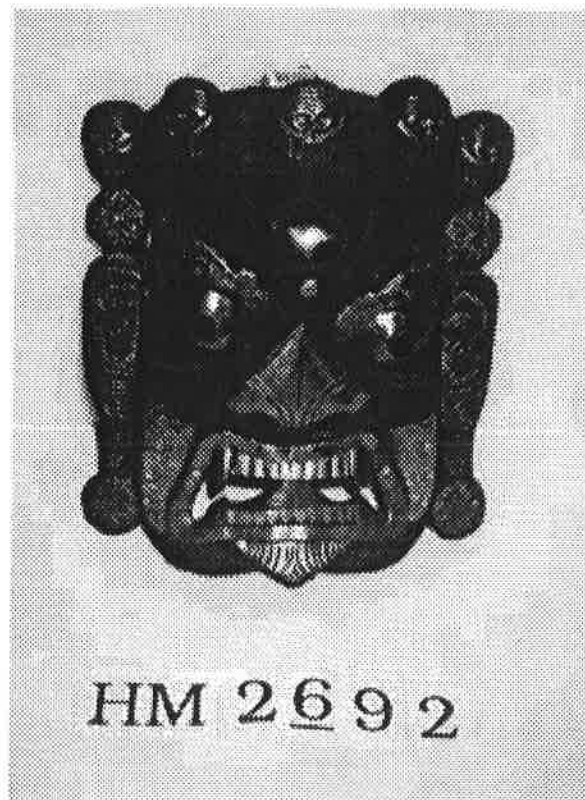
	<b>Cultural Affairs Committee Request</b>	<b>Hudson Museum</b>	<b>To be Raised</b>	
<b>Staff</b>				
Professional Conservator (2 days @ \$400 per day)	\$ 800			
Conservation Technician (90 hrs @ \$15 per hour)	1350			
<b>Construction materials / supplies</b>				
Construction of exhibit mounts		500		
Mounting materials (brass wire, solder, etc.)		225		
Paint			19	
Photo processing expenses	50			
<b>Graphics</b>				
11 photographs @ \$25 each		275		
Matboard for labels			50	
Paper for labels	26			
Mounting adhesive	25			
Exhibit Banner	200			
Exhibit panels (11 3.5' x 4' mounted/laminated at \$147 ea.)			1617	
Exhibit Poster			100	
<b>Promotion</b>				
500 Exhibit announcements	150			
Postage (500 pieces @ .168 ea.)	84			
1000 Brochures	100			
<b>Totals</b>	<b>\$2,785</b>	<b>\$1,000</b>	<b>\$1,786</b>	<b>\$5,571</b>



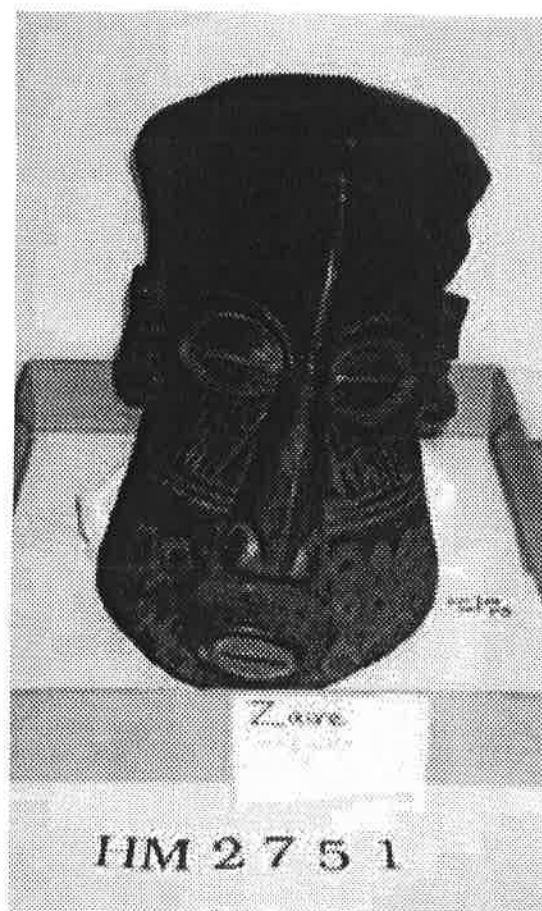
HM 2978



HM 2672



HM 2692



Zaire

HM 2751

*Cultural Affairs Committee*  
*including the*  
*Distinguished Lecture Series*  
*200 Alumni Hall*  
*University of Maine*

---

December 27, 2000

To: Steve Whittington

From: Kathleen March & François Amar, Co-Chairs

On behalf of the Cultural Affairs Committee, including the Distinguished Lecture Series, it gives me great pleasure to inform you that your proposal, *Other Faces: The Mask Collection of Marti Stevens*, has been awarded \$2785.00. **Please contact Wanda Legere at 1-1516 before your event takes place to arrange for disbursement of award funds.** Note: Reception and payroll expenses are not reimbursable through this award.

Please note that acknowledgment of the *Cultural Affairs Committee* is required on all promotional materials. **A budget report must be submitted at the conclusion of your event and will be considered for future funding requests.** It is assumed that projects are completed within 12 months, therefore, any remaining balance will be returned to the Committee account for further distribution unless otherwise notified.

The Committee notes that it does not fund more than 50% of the amount for any given program. It also asks applicants to consider the most reasonable honoraria possible, as there may not be funding for the higher amounts.

We, the members of the Cultural Affairs Committee, congratulate you and wish you much success on this project.