

1912

## Fort Kent, 1912

Sanborn Map Company

Follow this and additional works at: [https://digitalcommons.library.umaine.edu/me\\_sanbornmaps](https://digitalcommons.library.umaine.edu/me_sanbornmaps)



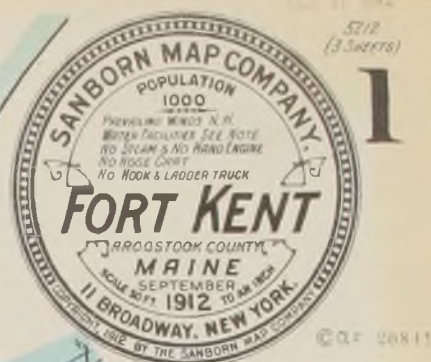
Part of the [Geography Commons](#), and the [History Commons](#)

---

### Recommended Citation

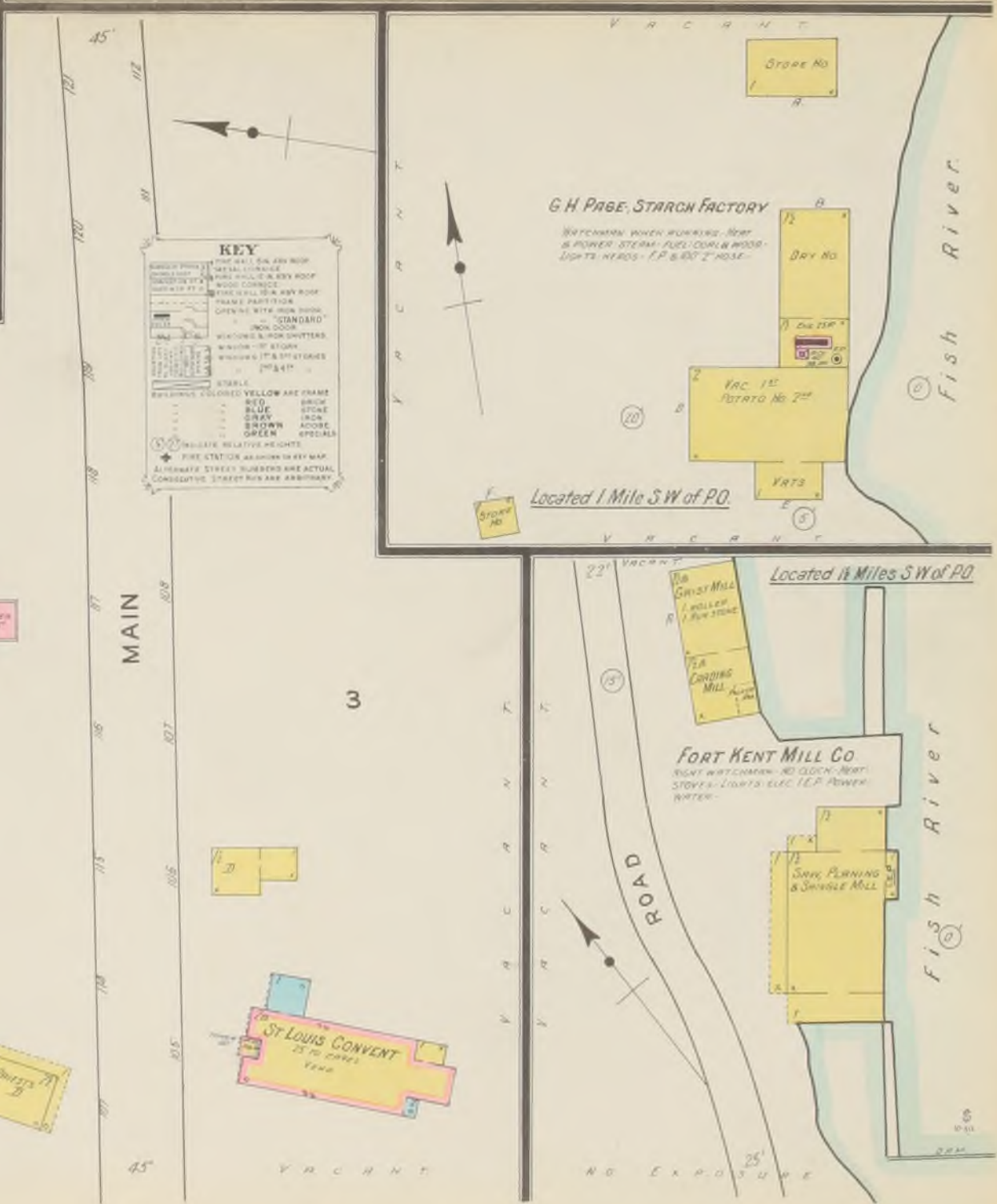
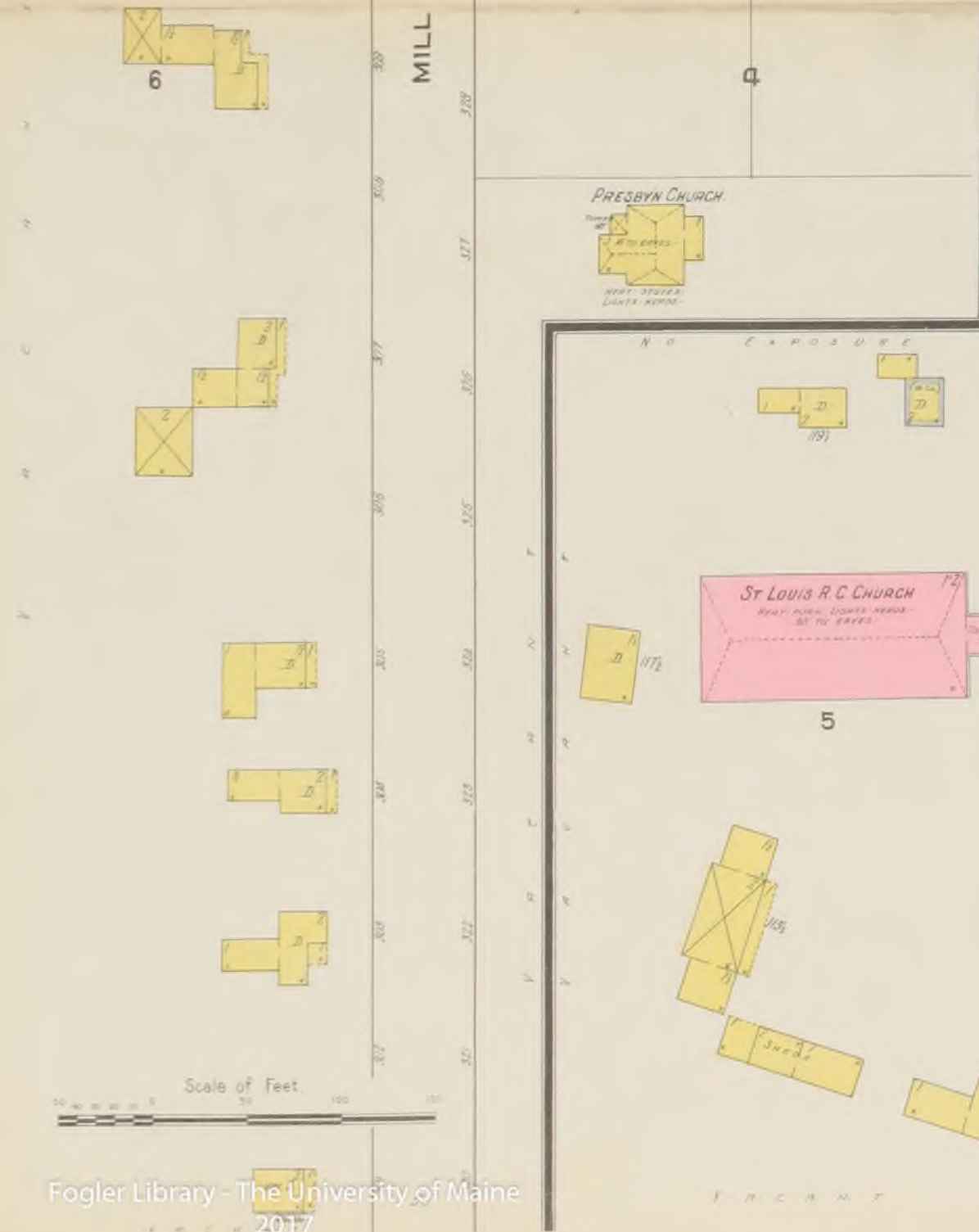
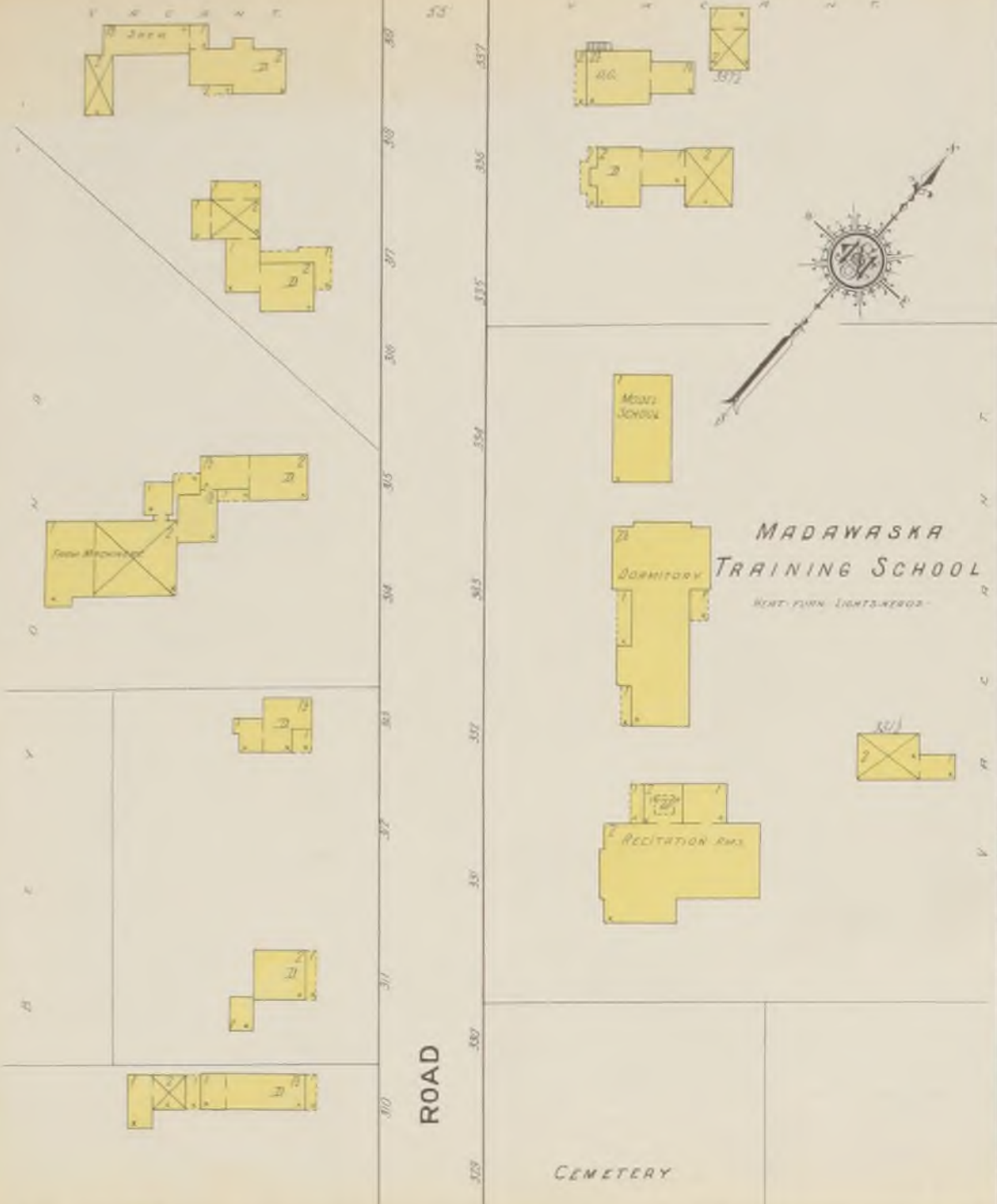
Sanborn Map Company, "Fort Kent, 1912" (1912). *Sanborn Maps of Maine*. 80.  
[https://digitalcommons.library.umaine.edu/me\\_sanbornmaps/80](https://digitalcommons.library.umaine.edu/me_sanbornmaps/80)

This Book is brought to you for free and open access by DigitalCommons@UMaine. It has been accepted for inclusion in Sanborn Maps of Maine by an authorized administrator of DigitalCommons@UMaine. For more information, please contact [um.library.technical.services@maine.edu](mailto:um.library.technical.services@maine.edu).



**INDEX.**

SPECIALS.	NUMBER	SHEET
B		H
B. & A. R. R. Passenger Depot	3	2
C		M
Castony, D., Potato House	3	3
Cleveland, E. L., Potato Houses	3	1
Craig, P., Potato Houses	3	P
Cunliffe's, W. H., Sons, Potato Houses	3	3
D		P
Daigle, A., Potato Houses	3	3
D. A., Potato House	3	1
Dumond, U., Potato House	3	2
F		S
Fort Kent House	3	1
Mill Co.	1	3
		T
		2



Scale of Feet