

1904

Fort Kent, 1904

Sanborn Map Company

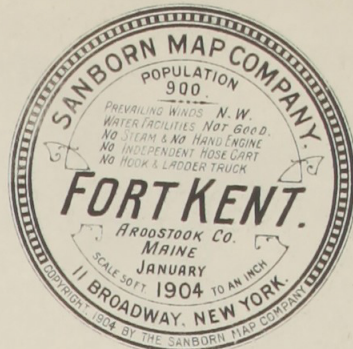
Follow this and additional works at: https://digitalcommons.library.umaine.edu/me_sanbornmaps

 Part of the [Geography Commons](#), and the [History Commons](#)

Recommended Citation

Sanborn Map Company, "Fort Kent, 1904" (1904). *Sanborn Maps of Maine*. 81.
https://digitalcommons.library.umaine.edu/me_sanbornmaps/81

This Book is brought to you for free and open access by DigitalCommons@UMaine. It has been accepted for inclusion in Sanborn Maps of Maine by an authorized administrator of DigitalCommons@UMaine. For more information, please contact um.library.technical.services@maine.edu.



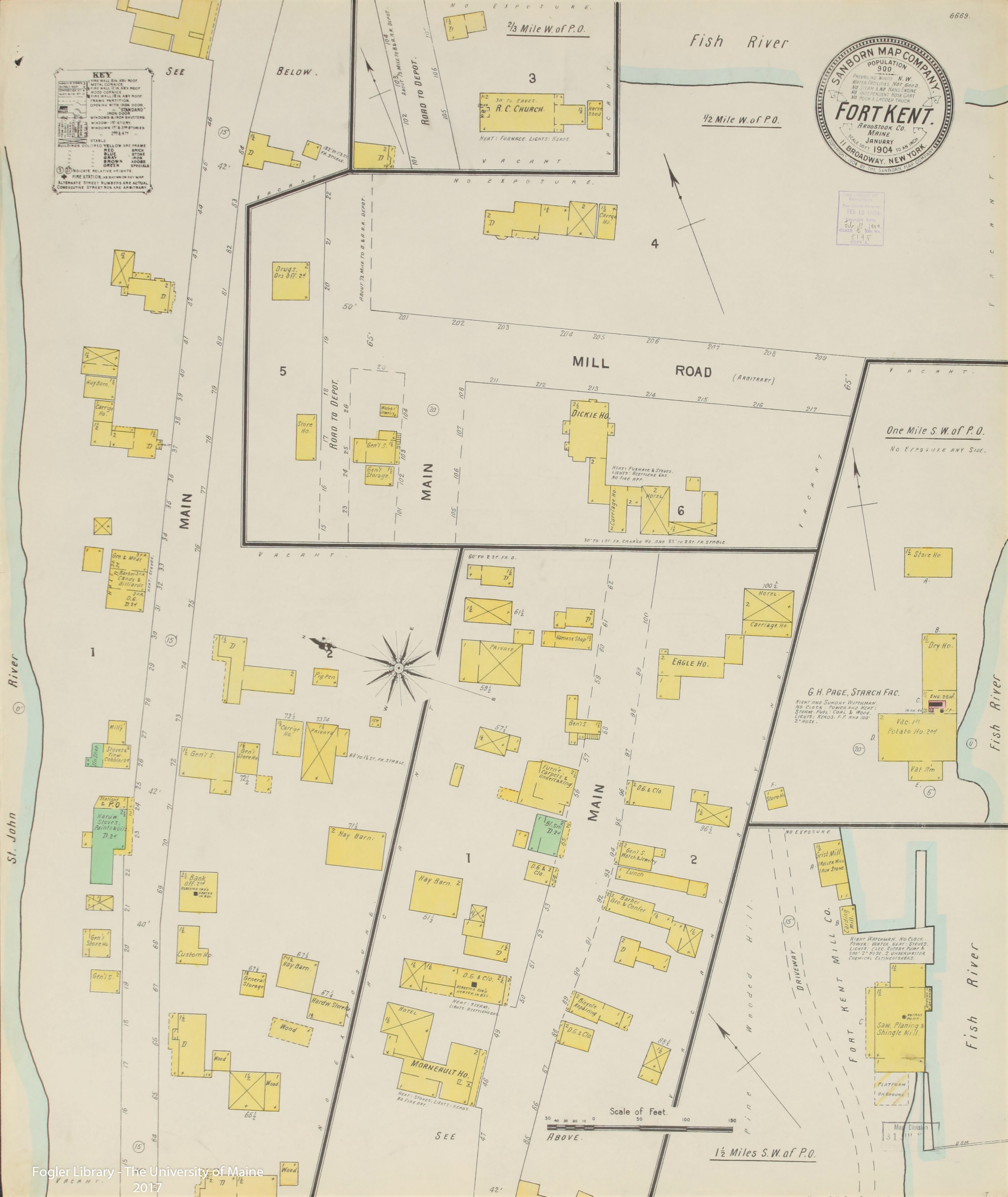
THE LIBRARY OF CONGRESS
Two Copies Received
FEB 12 1904
Copyright Entry
JAN 11 1904
CLASS 8
5195
COPY A

KEY

- FIRE WALL IN ASBY ROOF
- METAL CORNICHE
- FIRE WALL IN ASBY ROOF
- WOOD CORNICHE
- FIRE WALL IN ASBY ROOF
- FRAME PARTITION
- OPENING WITH IRON DOOR
- STANDARD
- IRON DOOR
- WINDOWS & IRON SHUTTERS
- WINDOW - 1ST STORY
- WINDOW - 1ST & 2ND STORIES
- 28' & 47'

STABLE
BUILDINGS COLORED YELLOW ARE FRAME
RED BRICK
BLUE STONE
GRAY IRON
BROWN ADOBES
GREEN SPECIALS

(S) INDICATE RELATIVE HEIGHTS
FIRE STATION, AS SHOWN ON KEY MAP
ALTERNATE STREET NUMBERS ARE ACTUAL
CONSECUTIVE STREET NOS ARE ARBITRARY



Fish River

1/2 Mile W. of P.O.

2/3 Mile W. of P.O.

One Mile S.W. of P.O.
NO EXPOSURE ANY SIDE.

1 1/2 Miles S.W. of P.O.

