

1904

Greenville, 1904

Sanborn Map Company

Follow this and additional works at: https://digitalcommons.library.umaine.edu/me_sanbornmaps



Part of the [Geography Commons](#), and the [History Commons](#)

Recommended Citation

Sanborn Map Company, "Greenville, 1904" (1904). *Sanborn Maps of Maine*. 76.
https://digitalcommons.library.umaine.edu/me_sanbornmaps/76

This Book is brought to you for free and open access by DigitalCommons@UMaine. It has been accepted for inclusion in Sanborn Maps of Maine by an authorized administrator of DigitalCommons@UMaine. For more information, please contact um.library.technical.services@maine.edu.



Moosehead Lake



GREENVILLE MFG. CO.
 YINER MFG. 1st FLR
 MOOSEHEAD CASE & POWER CO
 MFG. OF PACKING CASES 8th
 2nd & 3rd & Part of 1st FLOOR

HEAT & POWER - STEAM LIGHTS - ELEC. & REFRIG. OIL - FULL WASTE
 DRAIN P.P. IN END. 2nd & 3rd FLOOR 210' HIGH 2nd FLOOR
 WAREHOUSE 2nd FLOOR 24' HIGH 210' HIGH 2nd FLOOR



NOTE
 WATER FACILITIES: NO PUBLIC WATER SUPPLY
 2 POWER PILES, SAWMILL PILES, WAREHOUSE PILES
 FIRE DEPT. HOSE, 2nd FLOOR 210' HIGH 2nd FLOOR
 LAKE 210' HIGH 2nd FLOOR 210' HIGH

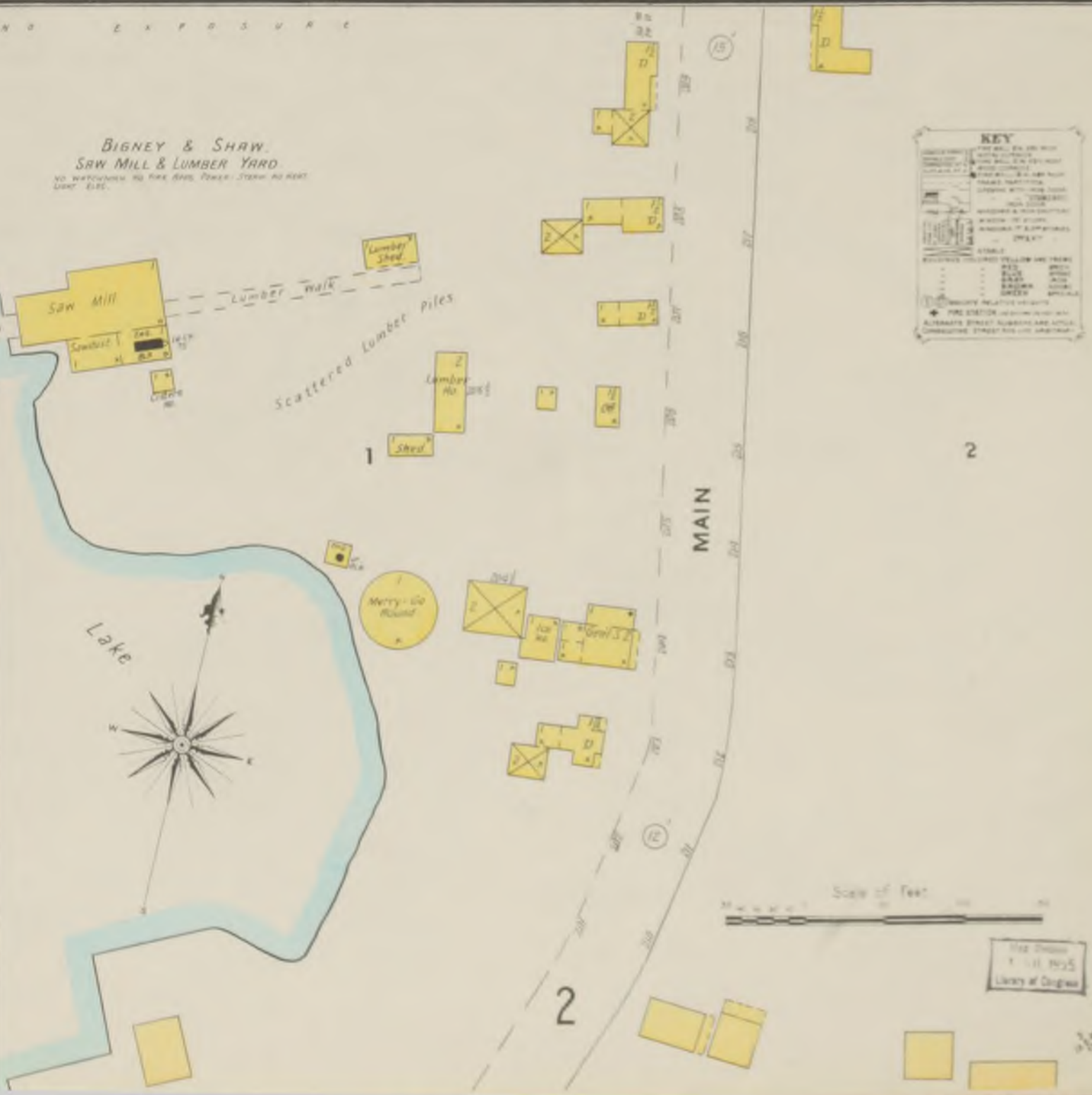
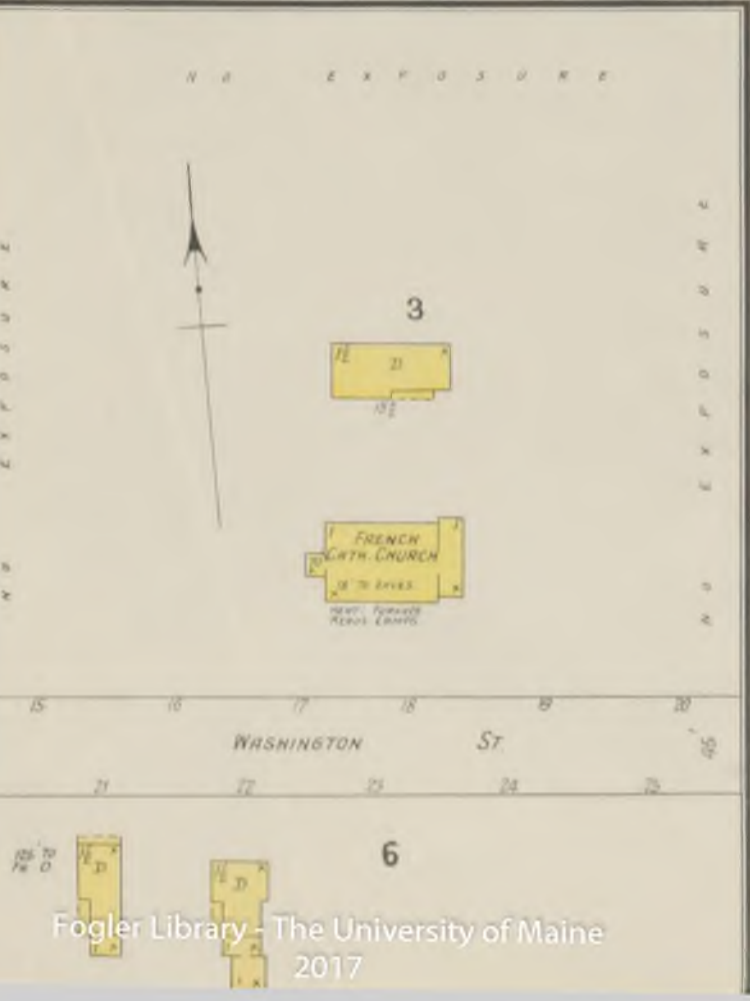
Index

SPECIALS		GENERAL	
B	B & A. R. R. Depot & Round Ho	G	Gerrish Bros. Saw & Planing Mill
	Pass. Depot at Greenville Junction		Greenville Mfg. Co.
	Bartley Ho.	H	High School
	Bigney & Shaw, Saw Mill & Lumber Yrd	M	Moosehead Case & Power Co
			Inc.
C	Coborn Steamboat Co. Coal Shed	S	Sanders, H. E. & Son, W. Ho.
	Store Ho.		Sawyer, F. L., Woodworking
	Wharf	T	Town Hall
	Crafts, A. A., W. Ho.	U	Union Church
E	Electric Light Plant		Universalist Church
F	Fire Department Hose Ho.	W	West Cove Grain Co.
	Polsom-Prentiss Co., Grain & Lumber		
	French Cath. Church		



BIGNEY & SHAW.
 SAW MILL & LUMBER YARD

NO WAREHOUSE. NO FIRE DEPT. POWER: STEAM HO. HO.
 LIGHT: ELEC.



Scale 1" = 100 Feet

1904 Edition
 1:11, 1905
 Library of Congress