

1889

## Houlton, 1889

Sanborn-Perris Map Co.

Follow this and additional works at: [https://digitalcommons.library.umaine.edu/me\\_sanbornmaps](https://digitalcommons.library.umaine.edu/me_sanbornmaps)



Part of the [Geography Commons](#), and the [History Commons](#)

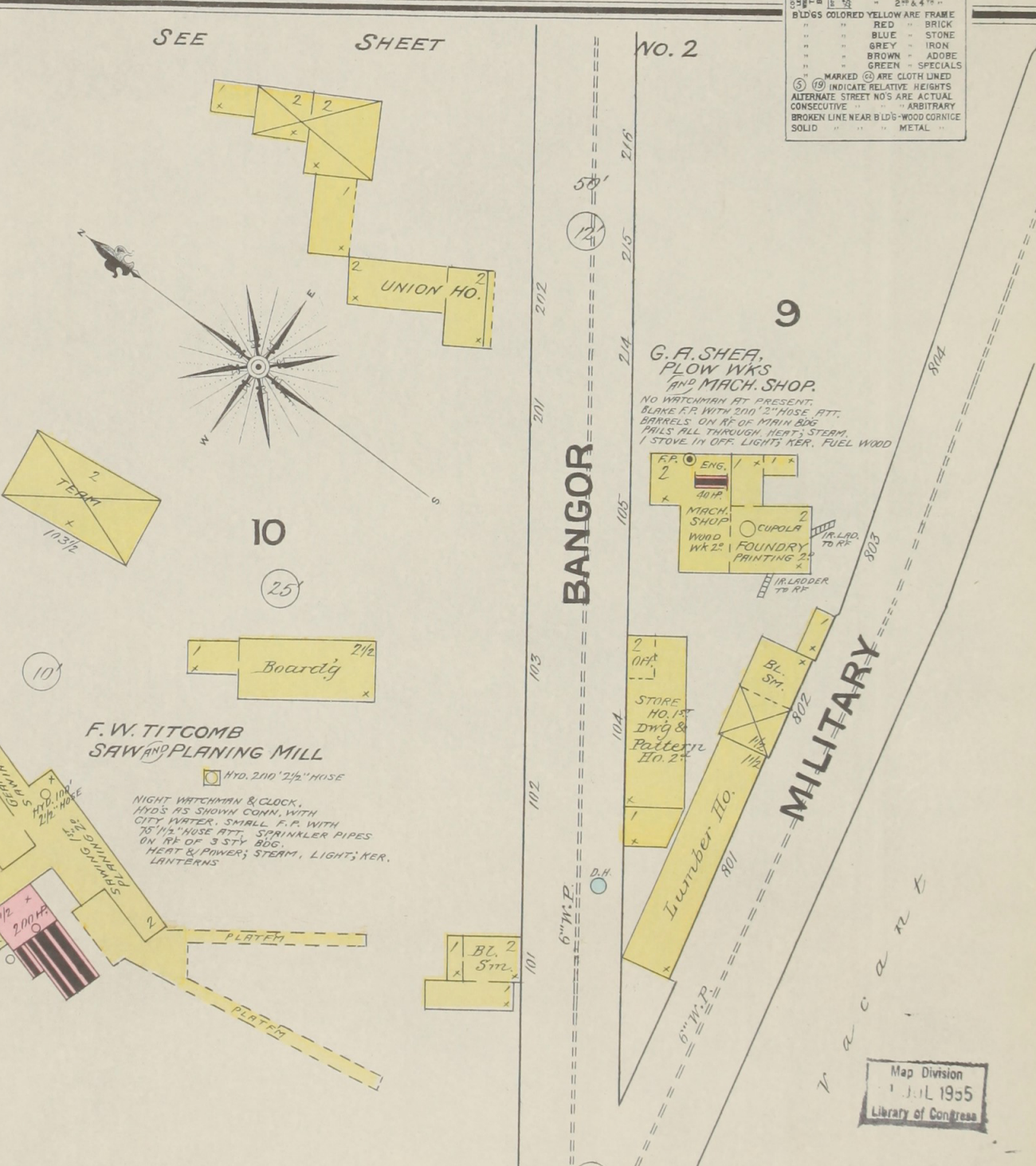
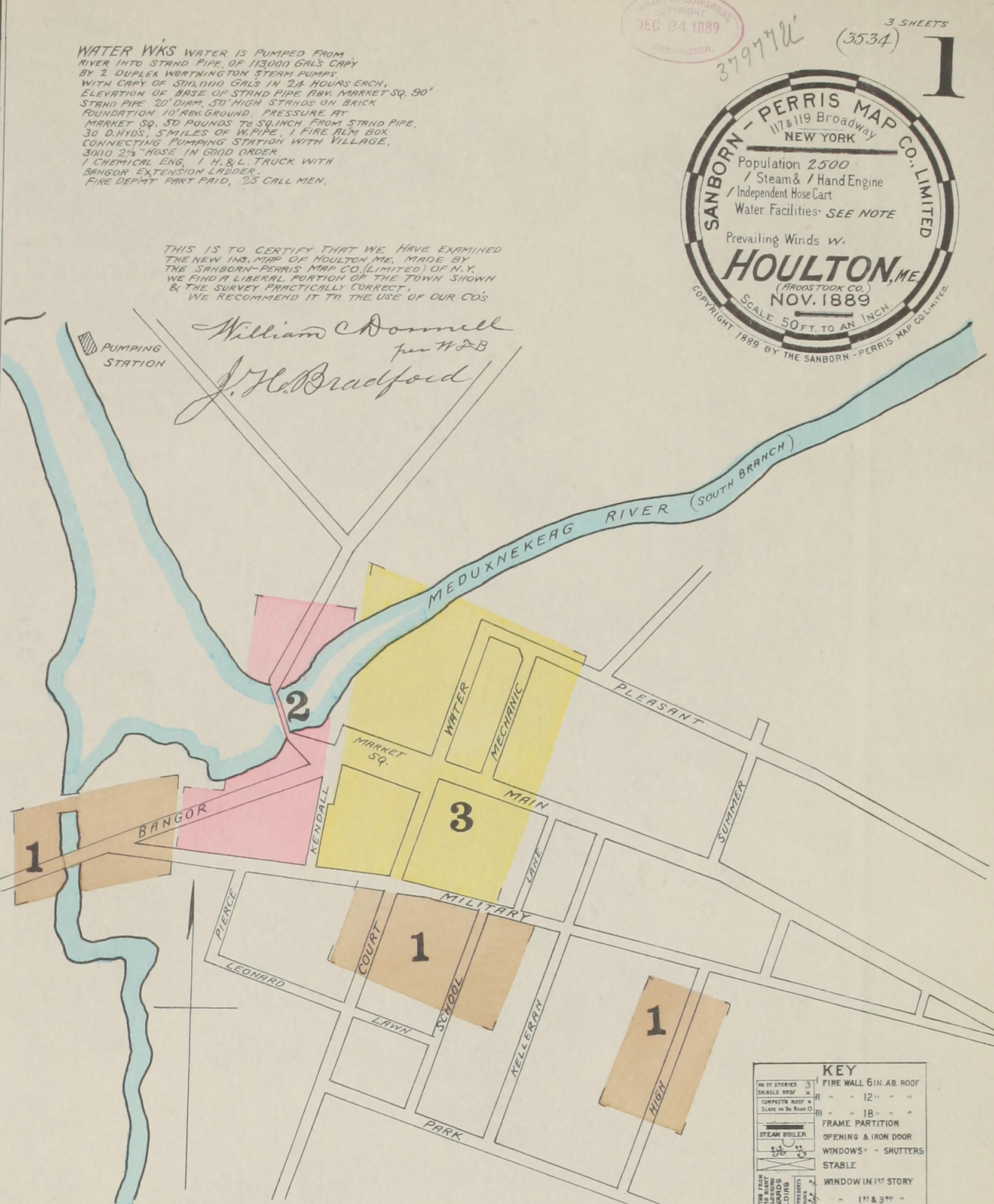
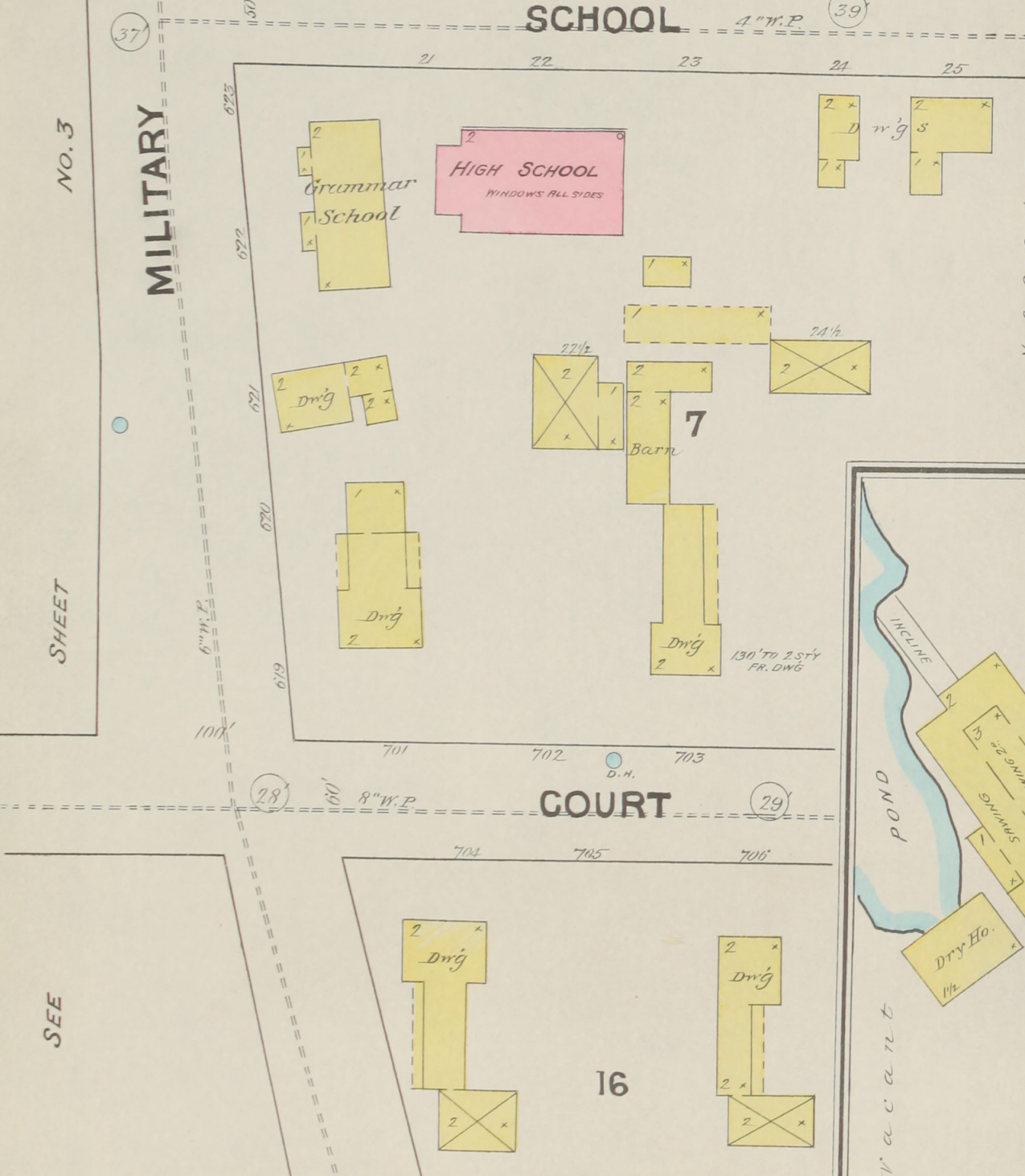
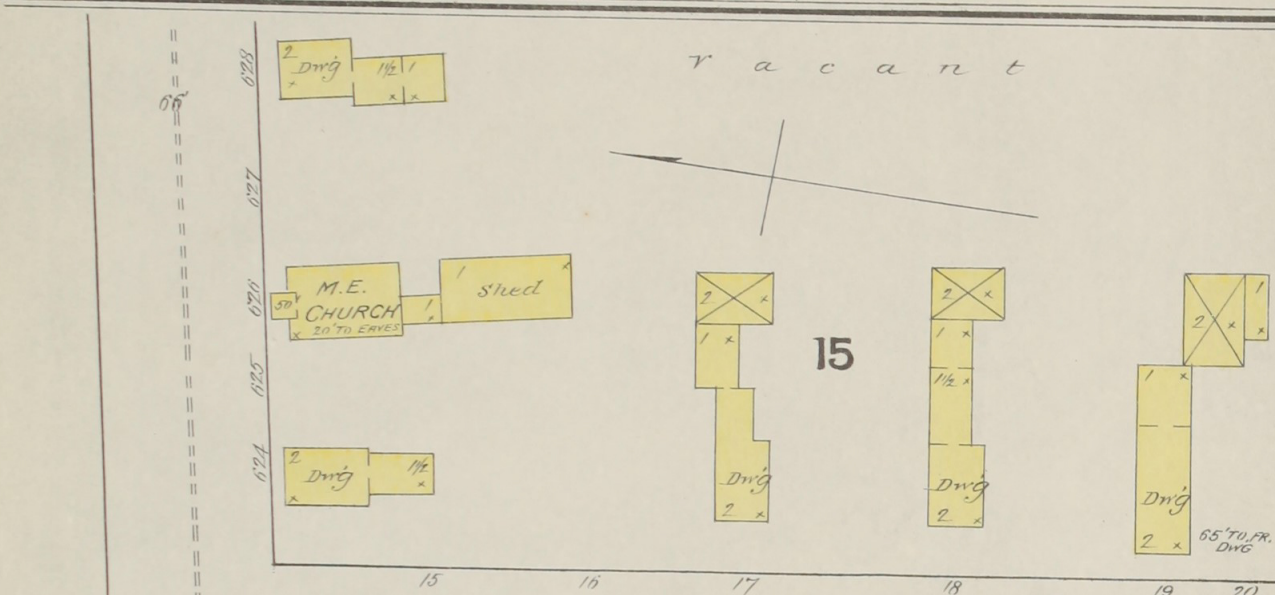
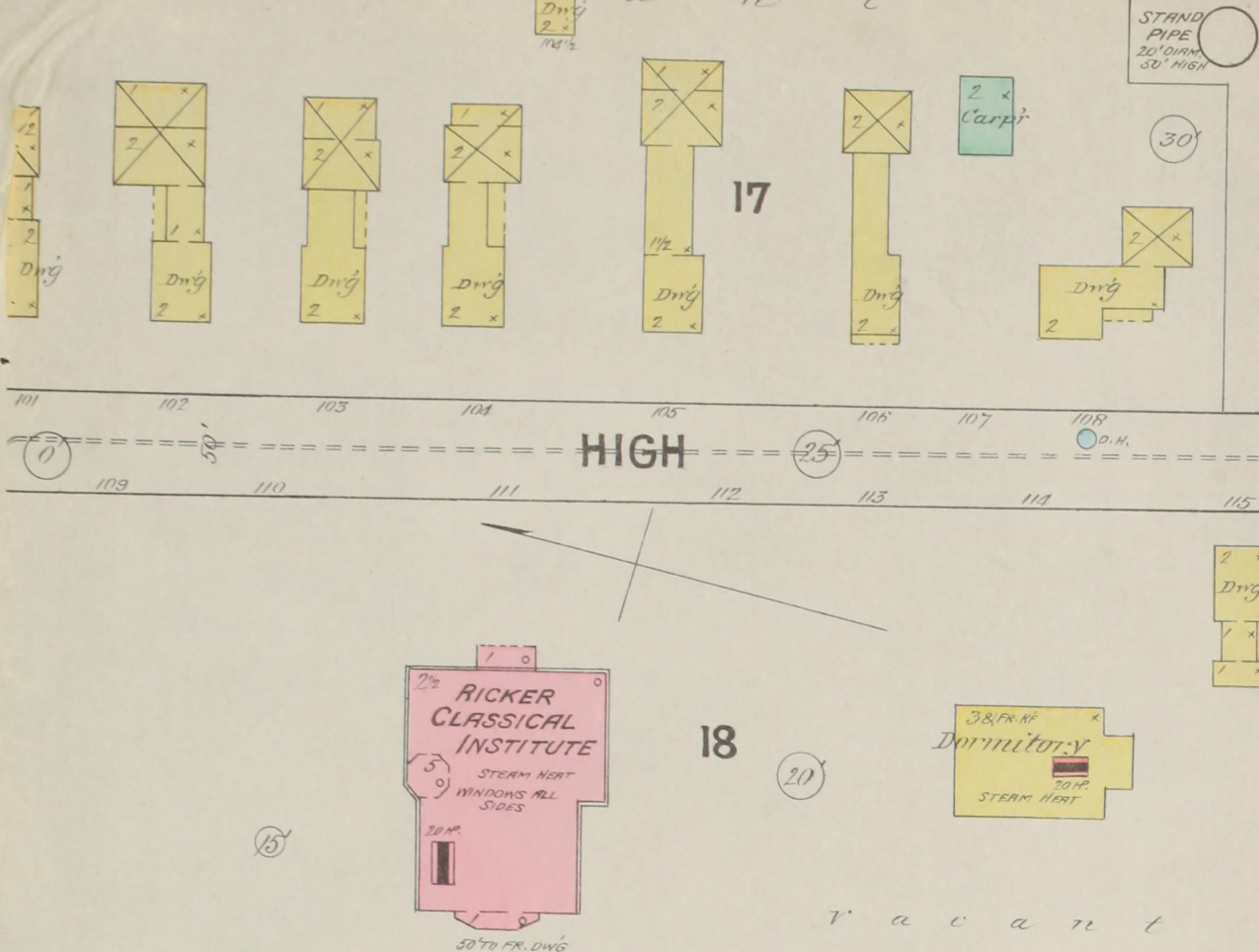
---

### Recommended Citation

Sanborn-Perris Map Co., "Houlton, 1889" (1889). *Sanborn Maps of Maine*. 64.  
[https://digitalcommons.library.umaine.edu/me\\_sanbornmaps/64](https://digitalcommons.library.umaine.edu/me_sanbornmaps/64)

This Book is brought to you for free and open access by DigitalCommons@UMaine. It has been accepted for inclusion in Sanborn Maps of Maine by an authorized administrator of DigitalCommons@UMaine. For more information, please contact [um.library.technical.services@maine.edu](mailto:um.library.technical.services@maine.edu).





WATER WAS PUMPED FROM RIVER INTO STAND PIPE OF 13000 GALS CAPY BY 2 DUPLEX WASHINGTON STEAM PUMPS WITH CAPY OF 30000 GALS IN 2 1/2 HOURS EACH. ELEVATION OF BASE OF STAND PIPE FROM MARKET SQ. 90' STAND PIPE 20' DIAM. 50' HIGH STRENGTH OF BRICK FOUNDATION 10' FROM GROUND. PRESSURE AT MARKET SQ. 30 POUNDS TO 3/4 INCH FROM STAND PIPE. 30 D.V.H.S. STUBS OF PIPE. 1 FIRE ALARM BOX CONNECTING PUMPING STATION WITH VILLAGE. 3/4 INCH 2 1/2 HOSE IN GRID UNDER 1 CEMENTED ENG. 1 M & L TRUCK WITH BANGOR EXTENSION LADDER. FIRE DEPT PAYT PAID. 25 CALL MEN.

THIS IS TO CERTIFY THAT WE HAVE EXAMINED THE NEW INS. MAP OF HOULTON ME. MADE BY THE SANBORN-PERRIS MAP CO. (LIMITED) OF N.Y. WE FIND A LIBERAL PORTION OF THE TOWN SHOWN & THE SURVEY PRACTICALLY CORRECT. WE RECOMMEND IT TO THE USE OF OUR COS.

William Donnell  
for W & B  
J. H. Bradford

**KEY**

3	FIRE WALL 6 IN. AB. ROOF
12	CONCRETE ROOF
18	FRAME PARTITION
19	STEAM BOILER
20	OPENING & IRON DOOR
21	WINDOWS - SHUTTERS
22	STABLE
23	WINDOW IN 1ST STORY
24	1" & 3"
25	2 1/2" & 4"
26	BLDG'S COLORED YELLOW ARE FRAME
27	RED - BRICK
28	BLUE - STONE
29	GREY - IRON
30	BROWN - ADOBE
31	GREEN - SPECIALS
32	MARKED (C) ARE CLOTH LINED
33	(S) INDICATE RELATIVE HEIGHTS
34	ALTERNATE STREET NOS ARE ACTUAL
35	CONSECUTIVE - ARBITRARY
36	BROKEN LINE NEAR BLDG - WOOD CORNICE
37	SOLID - METAL