

1921

# Old Town, including Surrounding Area, 1921

Sanborn Map Company

Follow this and additional works at: [https://digitalcommons.library.umaine.edu/me\\_sanbornmaps](https://digitalcommons.library.umaine.edu/me_sanbornmaps)

 Part of the [Geography Commons](#), and the [History Commons](#)

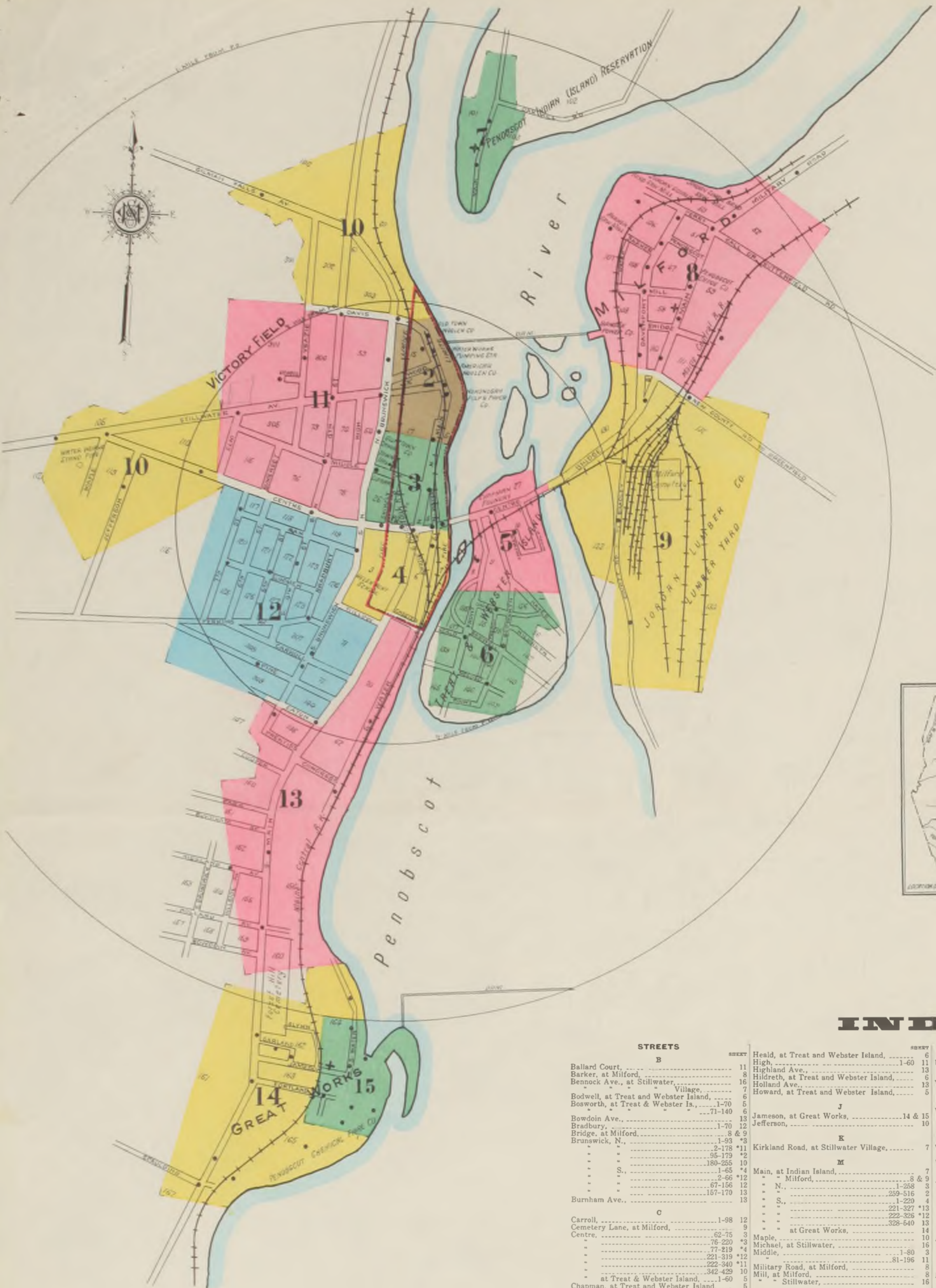
---

## Recommended Citation

Sanborn Map Company, "Old Town, including Surrounding Area, 1921" (1921). *Sanborn Maps of Maine*. 66.  
[https://digitalcommons.library.umaine.edu/me\\_sanbornmaps/66](https://digitalcommons.library.umaine.edu/me_sanbornmaps/66)

This Book is brought to you for free and open access by DigitalCommons@UMaine. It has been accepted for inclusion in Sanborn Maps of Maine by an authorized administrator of DigitalCommons@UMaine. For more information, please contact [um.library.technical.services@maine.edu](mailto:um.library.technical.services@maine.edu).





COMPRISING OLD TOWN, GREAT WORKS & STILLWATER INCLUDING MILFORD & INDIAN ISLAND

WATER FACILITIES: Water works owned by Bangor Railway & Electric Co. built in 1890... FIRE DEPARTMENT: OLD TOWN: Part full pay, gamewell fire alarm system... MILFORD: Volunteer dept - 27 men... INDIAN ISLAND: Volunteer co - 17 men...



KEY: FIRE WALL, METAL CORNER, WOOD CORNER, FIRE WALL WITH AVENUE, FRAMING PARTITION, etc.

INDEX

INDEX table with columns for STREET, SHEET, and SHEET. Lists streets like Ballard Court, Barker, Bennock Ave., etc., and their corresponding sheet numbers.