

The University of Maine

DigitalCommons@UMaine

Maine Women's Publications - All

Publications

Spring 1-1-2003

Funding Women and Girls (2003 - Spring)

Maine Women's Fund Staff

Maine Women's Fund

Follow this and additional works at: https://digitalcommons.library.umaine.edu/maine_women_pubs_all



Part of the [History Commons](#), [Public Administration Commons](#), [Public Affairs Commons](#), and the [Women's Studies Commons](#)

Repository Citation

Staff, Maine Women's Fund, "Funding Women and Girls (2003 - Spring)" (2003). *Maine Women's Publications - All*. 59.

https://digitalcommons.library.umaine.edu/maine_women_pubs_all/59

This Newsletter is brought to you for free and open access by DigitalCommons@UMaine. It has been accepted for inclusion in Maine Women's Publications - All by an authorized administrator of DigitalCommons@UMaine. For more information, please contact um.library.technical.services@maine.edu.

funding Women and Girls

Spring 2003

Hope ... is not
a feeling;
it is something
you do.
Katherine Paterson



Dear Friends,

In these times of uncertainty and concern for our individual and collective security, I find myself remarkably hopeful. As I

started to think about how to convey this sense of hope to all of you, I found my answer in this beautiful quote from Katherine Paterson's *The Horn Book*, published in 1992. Our work at the Maine Women's Fund is hopeful because we are working with women and girls across Maine and around the world to build solutions and solve problems. We are, in effect, "doing" hope every single day.

What are some of the hopeful signs?

- The work of our grantees is not only changing individual lives but it is also beginning to improve the environmental context for Maine women and girls. Read the profiles of the grantees highlighted in this newsletter to learn how these four groups are working for economic security, access to health care, violence prevention, and self-determination. Even in the face of scarce resources, they are determined to make systemic change to eliminate gender barriers. And, they are just four of dozens of organizations that are changing the landscape across Maine for women and girls.

➤ We are forging new "win-win" partnerships with business owners in communities throughout the state to strengthen our base of support and expand awareness of our work. We are especially excited by an initiative we have launched with women business owners that will result in new and increased support for our work while also strengthening the networks within this important segment of the Maine economy. We call this initiative *Women Standing Together* because together we all stand stronger, partners in the business of creating opportunities for women and girls.

➤ Our *New Girls' Network* program is offering hope at every turn! This year, 30 additional women in their 20's and 30's are meeting monthly to explore how they want to incorporate leadership, philanthropy, and feminism more fully into their lives. They are also building their own powerful networks that will continue to provide resources to the *New Girls* long after the conclusion of the program. We expect to see great things from the *New Girls' Network* alumnae in the years ahead.

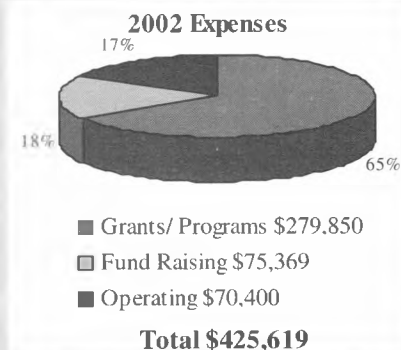
Perhaps my greatest hope lies in the knowledge that we have created a truly community-based funding mechanism that will continue to invest resources in Maine women and girls through thick and thin. This year we are increasing our grantmaking budget by nearly 10 percent because we are absolutely certain about one thing: funding women and girls provides hope for the entire community.

Thank you for continuing to help us grow and offer hope.

Karin Anderson

Karin Anderson
Executive Director

MWF's FUNDING SOURCES



The Maine Women's Fund utilizes an external auditor, Baker, Newman & Noyes, and audit reports are available upon request.

INSIDE THIS NEWSLETTER:

- Page 2 State and federal government funding cutbacks and impact.
- Page 4 MWF joins *Hannafords' Lighthouses on Parade*.
- Page 5 Thoughts on the *New Girls' Network*.
- Page 6 How your support is making a difference.
- Page 7 Exciting news to share.
- Page 8 Great happenings.
- Page 9 Calendar of events.
- Page 10 2002 donors.
- Page 12 2003 *Maine Women's Fund Award* nominations.

Maine Women's Fund

Board of Directors

Barbara S. Babbirk
President

Lisa M. Rideout
Vice President

Moya A. Elliot
Treasurer

Rebekah J. Smith
Secretary

Connie Adler
Susan Arledge
Gail Benvenuta
Myrna Bouchey
Martha Breunig
Jân Brøberg Carter
Susan Dubuque
Harriet W. Duer
Robin Lin Hodgskin
Donna Maiorino
Sibyl Masquelier
Mary McCann
Darcie N. McElwee
Leslie P. Merrill
Lois Galgay Reckitt
Elizabeth A. Tipper

Staff

Karin Anderson
Executive Director

Liz Anderson
Associate Director

Advisory Council

Ellen V.P. Wells, *Chair*
Madeleine G. Corson
Joanne D'Arcangelo
Joel D. Davis
Jane Holt DeFrees
Jean M. Deighan
Mimi Dunn
Carol Epstein
Richard C. Kennedy
Jana Lapoint
Doug Malcolm
Merle R. Nelson
P. Andrews Nixon
Richard L. Pattenaude
William J. Ryan
Joan Benoit Samuelson
Carol Wishcamper

Maine Women's Fund

565 Congress Street, #306
P.O. Box 5135

Portland, ME 04101

Phone (207) 774-5513

Fax (207) 774-5533

thewomen@mainewomensfund.org
www.mainewomensfund.org



With the reality of significant funding cutbacks by the state and federal governments, the MWF felt it was important to report on the impact that this will have on our work and the work of our grantee organizations. We contacted four organizations, and this is what they reported:

WHAT IS THE MISSION OF YOUR ORGANIZATION?

Maine Coalition to End Domestic Violence (MCEDV)

To assist and advocate for battered women and their children and to work toward ending domestic abuse in Maine. To encourage representatives of the state, municipalities, law enforcement agencies, schools, and the private sector to become involved in planning strategies for the development of a coordinated community response.

Maine Equal Justice Partners (MEJP)

Maine Equal Justice Partners is dedicated to providing low-income Maine people the legal representation they need to have an effective voice on systemic issues affecting their lives. The organization focuses on people's basic needs: housing, food, utilities, source of income, health care, child care, education and training, and working conditions.

Planned Parenthood of Northern New England (PPNNE)

To provide, promote, and protect access to reproductive health care and sexuality education so that all people can make voluntary choices about their reproductive and sexual health.

Women, Work, and Community (WWC)

Women, Work, and Community is committed to improving the economic lives of Maine women and their families. We work with women "where they are" and provide them with support, guidance, and the tools they need to take the next steps toward a more promising future. We provide training, advocacy and assistance in four program areas: microenterprise development; workforce development; asset development; and leadership development.

WHAT ARE YOUR CURRENT PROJECTS?

MCEDV

The coalition members offer a variety of temporary and longer-term housing options to victims of domestic violence. The availability of these shelters, safe homes, and transitional housing units is critical to the safety of those who might otherwise remain in or return to abusive situations due to lack of economic and housing alternatives.

MEJP

MEJP works in the legislature and the courts to give low-income Maine people an effective voice on issues they care about. Current priorities include:

- Healthcare coverage and the increasing costs. MEJP is working to maintain and increase healthcare coverage for low-income families and seniors.
- The *Parents as Scholars* program is a student aid program that helps low-income parents in two or four-year college programs. It was created as part of Maine's welfare reform plan.
- Welfare Reform and TANF Reauthorization is still a large issue on the federal and state level. Maine's experience has been important in the national welfare debate.

PPNNE

PPNNE's work centers around providing comprehensive, reproductive health care throughout Southern Maine, New Hampshire, and Vermont. In southern Maine, PPNNE provides care to over 11,000 women, men and teens in Biddeford, Sanford, Portland and Topsham. Additionally, they offer comprehensive sexuality education - on topics such as healthy relationships, abstinence, birth control, STI prevention, sexual violence, developmental disability and sexuality, communication, and more, to parents, teens, teachers and professionals. PPNNE advocates to protect and promote access to reproductive health care by monitoring legislation at the federal and state level, and by organizing at the community and state level. The 4,000 member Planned Parenthood Action Network in Maine works to lobby decision makers and implement issue campaigns to expand access to emergency contraception and protect the right to choose.

continued on page 3

WWC

Working in coalition with other organizations concerned with women's economic security, WWC has taken the lead on creating the Maine Women's Economic Security Agenda, which reflects the voices of Maine women. In community forums in each County across the state, women in Maine have voiced their concerns about the economic issues that face their communities and their families.

Maine Women's Economic Security Agenda:

- Expanding Access to Quality Education and Training.
- Ensuring that Employment Yields Economic Security.
- Promoting the Development of Women-Owned Businesses.
- Increasing Women's Financial Literacy and Asset Development.
- Redesigning Infrastructures to Address the Needs of Women and Families.
- Addressing Comprehensive Women's Health Care.
- Ensuring Women's Safety.
- Building Sustainable Communities and a Diversified Economy.
- Assuring Public Resources for Women's Needs.

WHAT IMPACT DOES THE DECREASE IN PUBLIC FUNDING HAVE ON YOUR WORK?

MCEDV

Statewide domestic violence staff positions impacted by revenue losses:

- 21 full-time positions eliminated (14% of the entire staff among member agencies);
- 3 part-time positions eliminated;
- 8 positions with reduced hours.

Revenue losses and cost increases in Maine domestic violence projects:

- Revenue losses total \$903,318;
- Operating increases total \$287,950.

The reduction in funding has forced the member agencies to go back to providing basic services for victims of domestic violence: 24-hour crisis lines, emergency shelter, support groups, and tran-

sitional housing. The cutbacks have directly impacted the community and school-based education and prevention services provided through grants and state funding. As one administrator noted, "the hope that we could stop the perpetration of abusive behavior through working with children, youth and community members is now lost."

MEJP

MEJP is spending enormous resources attempting to ameliorate the MaineCare cuts that will affect low-income people – resources they would rather be expending on expanding health care. Although the proposed budget does not cut people off MaineCare by reducing income eligibility levels, it does propose about \$25 million in cuts over two years directly on low-income people in the form of co-pays and premiums that people simply cannot afford.

The *Parents as Scholars* program is being protected and will begin to receive federal TANF dollars. All TANF "reserve" dollars have now been eliminated and the State's contribution to TANF reduced.

PPNNE

In the 121st state legislature, abortion access is again under attack, with 5 bills aiming to impede access to abortion services. The difficult budget debate puts family planning dollars at risk. And since every dollar spent for family planning saves an estimated \$3 in unintended pregnancy and newborn care, family planning is one of the most cost effective investments we can make. The roller coaster of state revenue must be addressed in order to secure the long-term stability of family planning and other critical funding needs.

WWC

WWC has already downsized 2 1/2 full time staff positions. Through the Women's Economic Security Agenda, WWC has identified key issues that will be effected by the budget cuts. The ongoing impact of the decrease in funding will be felt over the next few years.

WHAT ACTIONS ARE YOU TAKING,

AND WOULD YOU LIKE OTHERS TO TAKE, TO RESTORE FUNDING?

MCEDV

All nonprofits are feeling the impact and they are all trying to compete for the same shrinking resources. They are applying for more grants, approaching individual donors, and holding more fundraisers. The crisis has caused them to consider more long-range strategies such as planned giving. For more information about MCEDV visit www.mcedv.org.

MEJP

The best action that people can take right now is to call their Senators and Representatives and deliver the simple message that low-income people on MaineCare cannot afford to pay even more in co-pays and premiums than they do now. A second message should be that "if broadening the sales tax or raising the income tax on people making more than \$100,000 per year will assure needed state services to Maine people and reduced burdened property taxes, please, go ahead and raise those taxes!" For more information about MEJP, visit www.mejp.org.

PPNNE

The budget has provided flat funding, and it is still unclear how it will affect PPNNE and the other family planning providers. Join the Grassroots Network! For more information about PPNNE and the Grassroots Network, visit www.ppnne.org.

WWC

The Women's Economic Security Agenda has stimulated conversations with other organizations, and they are working more strategically and collaboratively than ever before. They are finding ways to diversify their funding through foundations and individual donors, but as more organizations are reaching out to individual donors, the competition gets greater. For more information about WWC, visit www.womenworkandcommunity.org.

Newsletter Contributors

Liz Anderson, Karin Anderson, Gail Benvenuta, Erin Brockette, Will Childs, Deb Curtis, Mary Henderson, JaneA Kelley, Anna Kent, Gilda Nardone, Sarah Standiford, Linda Wilcox and Marie Wilcox.

Layout

Liz Anderson

Printing

Dale Rand Printing

MAINE WOMEN'S FUND JOINS HANNAFORDS' LIGHTHOUSES ON PARADE

At her first MWF board meeting in September 2002, Sibyl Masquelier mentioned Hannaford's Lighthouses on Parade. At that time, the *Evening to Honor Maine Women and Girls* was 3 weeks away, and the idea of buying and painting a 10 foot lighthouse in 5 months seemed like a dream!

Sibyl's vision and determination has moved this ambitious dream into a remarkable reality. Her pure desire to spread the word of the Fund has sparked and inspired many hands and volunteers along the way! She also underwrote the entire cost of the MWF's participation in the project.

Our first task was to find an artist willing to donate precious time and talent. After only 3 calls we met Melissa Pritchard, a teacher at Longfellow Elementary School and freelance artist—thank you, Jessica! Melissa not only fully embraced Sibyl's vision but brought a new and deeper aspect. She offered to recruit and oversee elementary, middle and high school girls to work on this project with her.



Just as school was ending for the holidays, Melissa recruited six girls:

- Sophia Bernazzani, Fiona Densmore, Maggie McKeon and Kelsey Warren—5th graders at Longfellow Elementary School;
- Brianna Garland—sophomore at Deering High School;
- Katie Kiger—7th grader at Lincoln Middle School.

Melissa had drawn up the preliminary design and had negotiated with the principal at Longfellow Elementary School to use space in the school to work on the project.

On a cold winter afternoon in December, Headlight Audio Visual delivered the 10 foot, fiberglass lighthouse to a back door in the art department of Longfellow School, and work began!

Melissa worked with the girls to finalize the design and drawings. The lighthouse is a collection of images of projects the Fund has supported, logos of several grantee organizations, self portraits of the artists, and an array of women and girls in varying stages of life and activities. At the top of the lighthouse, handprint flowers reach up toward the sky—growing and flourishing.

The artists met every Thursday afternoon for several hours through January and February, and Melissa spent dozens of additional hours painting. Rather than enjoying a birthday dinner with her friends, she invited her friends to join her for a painting party instead!

The lighthouse was completed and picked up on schedule from Longfellow School on March 1— it looked dazzling.

The lighthouses will all be displayed throughout Portland from May through August. There will be a live auction on September 19 where 50% of the proceeds will be divided among the Maine Center on Deafness, The Senator George J. Mitchell Scholarship Research Institute, and the Cancer Community Center, and the remaining 50% will be awarded to the bidder's charity of choice.

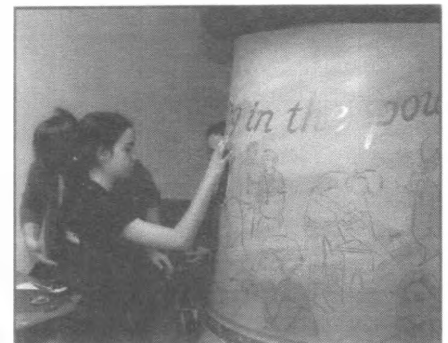
At every step of the journey, there was potential for obstacles to dismantle the entire project. However, it was the magnificent synchronicity that brought many committed women and girls together to make this happen in the most extraordinary way.



Check out the MWF lighthouse, we believe it will be on display at the Maine Mall in South Portland from May through August 2003.

If you would like to get in contact with Melissa Pritchard, she can be reached at missy@bernazzani.com.

The photographs were taken by Kevin Brusie and reprinted with his permission.



**FEMINISM WITH A "Z":
PORTLAND, CLASS OF '03**
Anna Kent

Last Saturday, as I stood in Lydia Maier's kitchen and contemplated my future—a common enough habit for someone finishing graduate school and job hunting—I had a feeling of comfort. Maybe it was the good food, or the fine company, or the fact that I'd put another chapter to rest, but I suddenly felt flush with optimism. Lydia and I were going to save the world! With the *New Girls' Network!*

What is it about this *New Girls' Network* experience, you might ask, that had inspired us so? I could say that our meetings have been thought-provoking, and that the site visits have been powerful demonstrations of the impact of the Maine Women's Fund, and I wouldn't be wrong. But I think it's really the zen, with a small "z," of the Network. By zen, I mean using our intuition and capacity for self-understanding to achieve power and connection. A more traditional approach to networking might involve the exchange of business cards or a seminar on venture philanthropy. While those are both worthwhile activities, they're not what we're doing at the *New Girls*. We are taking what we have learned about ourselves, our organizations, and our capacity for change, and setting the agenda for the next generation of philanthropists, parents, policymakers, and pundits, all in a "z" kind of way.

For me, it has always been good to go back periodically to the proverbial well and meditate on my feminism. This year, *New Girls* and the Maine Women's Fund have provided the impetus: celebrating the 30th anniversary of *Roe v. Wade* with Krista Haapala and Heidi-Anne Loughlin; organizing the *Women in Public Life Conference* with Jennifer Hutchins and Liz Anderson; dining at the *Evening to Honor Maine Women and Girls* with a whole table of *New Girls*; and participating in the *Women's Economic Security Agenda* meetings, again with Heidi-Anne. In these moments, I find new energy, new "z," for

my feminism. It's made me want to do more, not less: join a board or two, and start a long-tabled project, for example.

It's no coincidence that we were drawn to the group—the *New Girls* are all networkers by nature, I think. For me, the graduate program at the Muskie School has been the primary launching pad for my networking; many of those connections have been with future *New Girls* and alumnae. Well before the start of this year's program, I interviewed Krista for my capstone project and discovered our mutual interest in community and union organizing. Liz Rogers and I took a class in non-profit management a year ago, she remotely by TV in Belfast. Ann Tartre was a guest speaker at my class in grant writing in 2001. Jennifer and I have taken classes together since our first semester in the fall of 2000. And I first met Lydia and Kathryn Gardner through their spouses in the Muskie program.

Outside of our regular meetings, *New Girls* have been all over my calendar this year. Heidi-Anne and Erin Cinelli have been students of mine (both A's) in the public policy statistics computer lab. Karin Anderson and I hiked up Bradbury Mountain for MaineShare. And Kathryn Gardner and I indulged our obsession with the Tolkien movies by going to "The Two Towers" for a second time, before it left town. Maybe that's the beauty of feminism with a "z:" it involves participation on many fronts, in structured and non-structured ways, and in professional and personal contexts. At the beginning of the course, I struggled to articulate my feminism. Being a *New Girl* for the last six months has been enlightening.

Visit
www.mainewomensfund.org
for additional
comments from the
New Girls' Network.

The *New Girls' Network* will be launched in Lewiston/Auburn in September 2003. Please call Liz Anderson if you would like to receive information at 774-5513.

NEW GIRLS' NETWORK:
SUPPORT AND INSPIRATION
JaneA Kelley, Belfast

I wasn't sure what to expect when I came to my first meeting of the *New Girls' Network*. It sounded like an interesting concept, but I didn't know how it would manifest in reality. At my first meeting (which was really the second meeting of the year), I met a group of powerful, intelligent, creative and dynamic women, many of whom I would probably never have met in any other way. They have inspired me with their efforts and life work and have helped me to find ways to bring my own dreams to fruition, and I hope that I have been able to do the same for some of them. Our discussions about philanthropy, issues around money, and how to make progress toward our goals have been amazing. I've learned a lot about myself, and I've been able to let go of many of my own negative thought patterns about money and life.

The *New Girls' Network* has also been a great support. I was recently laid off from my job as a multimedia designer, and the women of the *New Girls' Network* have not only sent information about job opportunities my way, but have helped me connect with people who don't necessarily advertise when positions open up in their line of work. I feel blessed to have this opportunity for networking and support, and I'm more than willing to "pay it forward" when the time comes that another one of my Network friends needs a job or wants to make a career change. It's really empowering to know that there is a group of well-connected women behind me as I engage in my job search.

On a more esoteric level, I'm glad to meet other women who have a vision of a better future and are working to create that future. We are the leaders and mentors for the next generation, and I'm glad to know that there are other women I can call on—and who can call on me—when help, support, and mentoring is needed. The collective talent in the *New Girls' Network* amazes me, and every meeting I go to leaves me feeling inspired and uplifted.

In 2001, the Maine Women's Fund awarded Women, Work and Community a \$6,000 grant to bring the *Financial Self-Sufficiency Project* to Aroostook County.

Cheryl Tardy is a displaced homemaker from Danforth, Maine, whose children have grown. She recently received her award letter from Northern Maine Technical College confirming her enrollment in the Nursing Program. For the past year she has been preparing herself for this day by taking preliminary courses at the college that would make her a competitive candidate for acceptance into the program. Cheryl worked part time to support herself while traveling a great distance to attend classes.

Cheryl learned about Family Development Accounts from a friend, and in April 2002, came to Women, Work and Community for information and an application. She enrolled in the May "Financing Your Future" class in Presque Isle to develop the skills necessary to create a spending plan which would incorporate a savings plan. While not an easy task with her very limited resources, she believed that if she qualified for an FDA and began to save towards her education expenses, her dream to be a nurse would be possible. Cheryl, through difficult circumstances, completed the training, and opened her FDA in June 2002. She will be able to draw from her matched savings in time for the January semester. Cheryl states that she is very excited about the path she is on and attributes the financial training and the savings program to having provided her with the opportunity to make becoming a nurse possible. She says, "I know I can do it!"

2002 MWF GRANTEE DEMOGRAPHIC BREAKDOWN *

Issue area addressed	
Advocacy/public policy	16 %
Economic Empowerment	18 %
Health	15 %
Violence Prevention	32 %
Self determination	18 %

Ethnic constituency served	
African **	10 %
African American	3 %
Asian	2 %
Caucasian	66 %
Hispanic	2 %
Native American	8 %
Other	9 %

Sexual orientation of constituency served	
Bisexual	2 %
Gay	1 %
Heterosexual	86 %
Lesbian	10 %
Questioning	2 %

Age group of constituency served	
Females 0-11	13 %
Females 12-17	30 %
Females 18-25	20 %
Females 26-66	37 %
Females 67+	1 %

Income level of constituency served	
Poverty	58 %
Low-income	26 %
Middle income	16 %

Geographic region served	
Greater Portland	3 %
Other Urban	19 %
Rural	28 %
Reservation	8 %
Statewide	31 %

Number of women and girls served	
Total	15,000
With disabilities	1 %
With HIV	1 %
With mental illness	1 %
Incarcerated	1 %
Refugees	1 %

* The Maine Women's Fund has requested specific demographic information for the last 3 grant cycles. Not all grantee organizations track this information, therefore the numbers reflect the information supplied.

** Maine has an increasing population of African refugees who do not consider themselves African American.

In January 2002, the Maine Women's Fund awarded 18 grants to women seeking higher education – the Maine Scholarships for Women Program.

A letter from one of the recipients:

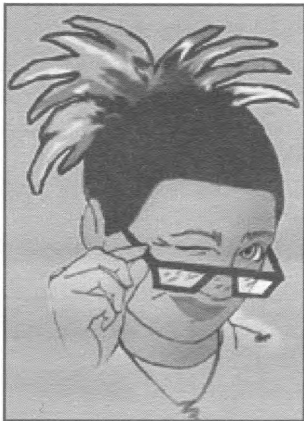
In May 2002 I graduated from Mid State College with my degree in Early Childhood Education. I graduated with the highest GPA in this major. I have since that time been working and this August will be changing jobs because a dear friend of mine will be opening a brand new pre-school and she has asked me to join her. I'm quite excited about this.

I want to thank you again for your generous gift. We went through some pretty tight financial times after losing my job. Your scholarship was a blessing. Thank you for all you do for the women of Maine.

**ZOEY'S ROOM RECEIVES
\$100,000 GRANT**

The Maine Women's Fund is thrilled to announce that former grantee *Zoey's Room* has been awarded a \$100,000 grant by an anonymous family foundation!! The Fund awarded *Zoey's Room* \$20,323 between 2000 and 2002 to help launch their interactive website for girls.

More Maine girls interested in developing their computer skills and technical know-how will soon have the opportunity, through a multi-formatted program that consists of *Zoey's Technology Leadership Camp*, *Zoey's E-Pals' Club* and the interactive website.



With this multi-year grant of \$100,000, *Zoey's Room* will be able to expand the program further throughout the state of Maine, host *Zoey's Technology Leadership Camp* in 2003 and develop more web interactivity and online chats with *Fab Females* at zoeyroom.com.

"This is a huge leap for Zoey's Room," said co-creator Erin Brockette, *"and an incredibly important stamp of approval. It will enable us to help inspire and involve over 500 Maine girls in technology, computers and the Internet. It also gives us half the funding we need for this year and a quarter of our funding secured for the next two years."*

Congratulations Erin and Vini for all your hard work!

**The following donors entered the
MWF QuantumLeap
Donor Circle**

by increasing their giving by at least 100%. We thank them for helping us achieve our vision and invite others to join them in this circle of abundance!

- | | |
|---|-----------------------------------|
| Kate Adams | Dorothy B. Larrabee |
| Connie Adler, MD | Catherine Lee and Robert Moyer |
| Gail K. Adshead | Judith Leibowitz |
| Susan A. Allein | Heidi-Anne Loughlin |
| Ann Marie Almeida | Auta M. Main |
| Karin Anderson | Maine Center for Economic Policy |
| Maren D. Anderson | Donna Maiorino |
| Elisabeth Anderson and Robert Ketzer | Susan B. Martin |
| Beth Ansheles | Susan E. Mavrinac |
| Sarah C. Armentrout | Marian McCue |
| Anne Elise Aubry | Darcie McElwee |
| Jean Badran | Kerry McGaffey |
| Leigh Bagley | Sarah S. Meacham |
| Meleta Murdock Baker | Betty-Jane S. Meader |
| Donna Barmore | Alexandra K. Merrill |
| Bonnie Beach | Bonnie Rukin Miller |
| Gail Benvenuta | Cheryl Miller |
| Constance Bloomfield | Lisa Miller |
| Penny L. Bohac-Cardello | Mary Beth Mills |
| Mary Bok | Dora Ann Mills and Michael Fiori |
| Kathleen H. Bouchard | Penny and Robert Morris |
| Anne E. Browning | Jennifer R. Nolan |
| Lindsay Cadwallader | Christiane Northrup, M.D. |
| Jan Brøberg Carter | Sally Paterson |
| Charlie Bernstein | Linda Peyton and Morris Hancock |
| Erin Cinelli | Judith Pitchforth |
| Coffee by Design | Judith A. Powers |
| Lynn E. Cole | Rebecca A. Quinlan |
| Couleur Collection | Hilary Rapkin |
| Barbara L. Crider | Lynne Richards |
| Sally Crissman | Lucille Roy |
| Carol Curran | Royal River Natural Foods |
| Catherine E. Cutler | Elizabeth H. Ruff |
| Connie Densmore | Tori Ryan and Dan Del Rossi |
| Valerie Devuyt | Susan M. Savell |
| Donna Edwards | Amanda Schumaker |
| Moya A. Elliot | Sarah Shed and Joel Davis |
| Kelley Erickson | Alice G. Sheppard |
| Teresa M. Esposito | Deirdre Smith |
| Amy Fischer | Ms. Jane Smith |
| Flatbread Company | Rebekah J. Smith |
| Nancy Fox and Jon Edwards | Stephanie M. Southard |
| Valerie Gallin | Karen Stathapoulos and Kim Krauss |
| Garrand & Associates | Susan Stedman |
| Elizabeth Glover | Alyson F. Stone |
| Greater Portland Bone and Joint Specialists | The Balancing Act |
| Shirley N. Hager | Elizabeth A. Tipper |
| Patricia Hage | Donna and Greg Trundy |
| Meredith R. Hamer | Verizon |
| Dagmar S. Hamilton | Wendy Weiler |
| Lindsay H. Hancock | Jane Wellehan |
| Leslie A. Hawkins | Mr. and Mrs. John White |
| Lynn Hawkins | Robin F. Whitten |
| Michael Herz and Kate Josephs | Elizabeth Wicander |
| Brita Holmquist | Karen Wright and Robert Willis |
| Patricia Holt | jann L. Yankauskas |
| Helaine Hornby | Rita Zanichowsky |
| Julie Jenkins | |
| Bambi Jones | |
| Just Maine Made | |
| Elizabeth and James Kilbreth | |



**MAINE SHARE ALLOCATIONS
UP 10% IN 2002
TOPS \$1 MILLION MARK
FOR CHARITABLE
GIVING IN MAINE**

MaineShare, an alliance of 35 state-wide non-profit organizations that work for positive social change in Maine including the Maine Women's Fund, distributed a record \$192,771 in 2002, a 10% increase over the 2001 allocations. Since its inception in 1989, MaineShare has now distributed \$1,144,979 to organizations that address root cause solutions to Maine's human and environmental problems.

MaineShare donors give funds primarily through payroll deductions and direct gifts. Currently, MaineShare is offered in more than 130 workplaces throughout the state, providing choice in giving and volunteer opportunities for more than 60,000 employees across Maine. If your organization would like to add MaineShare as a workplace giving option, please contact MaineShare directly at 772-9824 or the Maine Women's Fund at 774-5513.

WEB OR SNAIL MAIL?

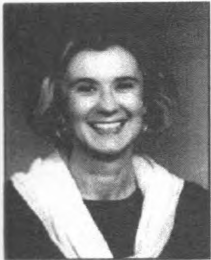
The Fund's newsletter is now available on our website

www.mainewomensfund.org

If you wish to receive your newsletter electronically please email us at thewomen@mainewomensfund.org

**WOMEN IN MANAGEMENT
23rd Annual
USM Conference
April 29–30, 2003
Holiday Inn by the Bay**

The annual Women in Management conference addresses the issues women face in their professional and personal lives and acknowledges the uniqueness of women's abilities and roles. The conference creates a stimulating environment in which women can network, sharpen their skills, share their experiences, and reflect on their accomplishments and their goals.



This year the key-note speakers will include Diana Whitney (left) and Julie Morgenstern (below), with workshops covering topics such as leadership, management, communication, legal and money matters, and career life skills.

The Maine Women's Fund is thrilled to be the beneficiary of the silent auction offered on both days. Thank you to all the businesses who have contributed items for the silent auction. To donate an item to the auction, please email liz@mainewomensfund.org—see *Mother's Day* insert for complete listing of contributors.



We encourage you to sign up for the conference, and remember to bring your checkbook to purchase a gift for yourself or friend. *Mother's Day* is just around the corner!

The cost for one day at the conference is \$185 and \$295 for both days. To sign up for the conference call 780-5951, TTY 780-5646 or visit www.usm.maine.edu/cce/wim.

**GATHERING IN
LEWISTON/AUBURN**

On a snowy Sunday afternoon in February, 30 women gathered at the Women's Literary Union in Auburn to meet each other and hear about the work of the Fund. We were gifted to be in conversation with former grant project participant Anna Bullett and *New Girls' Network* member Patty Renaud.

Anna, a 1999 recipient of the Maine Women's Fund Award now attending the culinary academy in Providence, Rhode Island, had been a part of Auburn School District's program *Giving Girls the Edge*. She spoke articulately and passionately about the roles young women are thrust into, and our collective obligation for support and engagement to provide them the best opportunities for developing self-determination and personal power. She keenly depicted the leadership roles girls and young women fill and the talents they will bring to bear when offered guidance and support that understands how to let them take the lead. Patty likewise inspired us with her account of *New Girls' Network* activities, and the rich self-development that she has experienced through her relationships within the Network. We were also delighted to hear briefly from Harriet Low, an elementary school student member of the advisory council for *Turning Beauty Inside Out, Maine*.

The gathering raised awareness of the Fund and our activities in the Lewiston-Auburn area, including our current partnership with Women, Work and Community in the *Women's Leadership Initiative of Androscoggin Valley (WLIIV)* and the upcoming start of the *New Girls' Network*. The event also raised nearly \$1,000! Thanks to MWF Board members Donna Maiorino, Martha Breunig, and Gail Benvenuta for planning the gathering and providing all the treats!

For more information about WLIIV contact Lisa Daggett at 753-6622. The next luncheon, which is open to the public, is planned for May 15. Call Liz Anderson at 774-5513 if you are interested in the *New Girls' Network*.

**KEY FINANCIAL
FORUM FOR WOMEN
ACHIEVING FINANCIAL
HAPPINESS**

Steps you can take now to make the most of your money. It's not how much you make...it's making the most of what you have.



Meeting your everyday financial obligations and planning for the future – retirement, education, or whatever your particular needs may be – are among every woman's primary "stressors." Each of us has our own list, and we procrastinate and worry. Jean Chatsky is here to motivate you to take action. She will outline the proven steps you can take to achieve financial happiness.

During the *Key Financial Forum for Women*, you will participate in a workshop that addresses your financial interests. Explore topics with other women from your region who share your focus.

The forum is designed for women of all ages and incomes. If you are a woman ready to feel secure in your future and support a wonderful cause – The *Key Financial Forum for Women* is for you!

Workshop Information

Small Business:

- Creating a Winning Plan to Run Your Business
- Strategies to Succeed in a Downturned Economy

Personal Finance:

- Developing a Sound Financial Plan
- Managing Complex Financial Needs

June 3, 7:30 - 11:00 a.m. The Marriott Sable Oaks, South Portland.

\$20 registration fee benefits the Maine Women's Fund and each attendee receives a one-year subscription to *Mainebiz*. Register online www.key.com/womensforum.

Event sponsored by KeyBank, MaineToday.com and MaineBiz.com.

*Thank you to the
dozens of volunteers
who made our work
possible in 2002!*

MWF VOLUNTEERS

Connie Adler	Randi Graham	Deborah Pease
Ann Marie Almeida	Colleen Grover	Brenda Peluso
Susan Arledge	Patti Hart	Alison Perkins
Barbara Babkirk	Robin Lin	Lisa Pohlman
Rebecca Bell	Hodgskin	Bonnie Porta
Gail Benvenuta	Annie Houle	Amy Porter
Elizabeth Berkana	Bernadette Iulucci	Clara Porter
Wendy Blackwell	Meredith Jones	Sue Pratt
Tracy Booth	Jane Kenneally	Kate Quin-Easter
Myrna Bouchey	Anna Kent	Hilary Rapkin
Tricia Boulet	Beth Kilbreth	Nicole Ray
Lydia Bower	The Ladies of 100	Patty Renaud
Martha Breunig	State Street	Lisa Rideout
Elaine Briggs	Gloria Leveillee	Annie Rose
Jan Broberg Carter	Hildie Lipson	Libby Rountree
Suzanne Brown	Heidi-Anne	Mandy Sabine
Pelletier	Loughlin	Anne Sarazin
Carol Capamaccio	Sandy Lovell	Elise Scala
David Chute	Lydia Maier	Gillian Schair
Erin Cinelli	Donna Maiorino	Joy Scott
Susie Colfer	Sibyl Masquelier	Shireen Shahawy
Thorne Conley	Carolyn May	Susan Shaw
Shirley Connor	Mary McCann	Sarah Skillin
Nancy Coyne	Darcie McElwee	Neila Smith
Wendy Craig	Shaye McGann	Rebekah Smith
Kris Currier	Robbins	Deb Soule
Dan Del Rossi	Cynthia McMullin	Marge Stockford
Susan Dubuque	Leslie Merrill	Andi Summers
Harriet Duer	Cori Messinger	Ann Tartre
Moya Elliot	Bonnie Rukin	Kellie Theriault
Kelley Erickson	Miller	Betsy Tipper
Maggie Foley	Mariah Monks &	Christine Tirell
Aileen Fortune	Friends	Jim Turcotte
Claire Fortune-	Sitey Mukhtar	Joan Uraneck
Agan	Donna Murphy	Jacolyn Wetmore
Cynthia Freeman-	Susan Neale	Catie Wheelan
Cyr	Robert O'Brien	Kay White
Lois Galgay Reckitt	Mary Orear	Marie Wilcox
Felicia Garant	Janet O'Toole	Cindy Wolfe
Vanessa Gates-	Sally Lou Patterson	jann Yankauskas
Elston		

A SPECIAL THANKS TO

Elizabeth Banwell	KeyBank,
Will Childs	Kathy Underwood and
Marcia Feller	Denise Sakal
Catherine Fisher	Mary Allen Lindemann
Jen Goldman	Libby Margolis-Pineo
Gail Henderson and First	Bob Morgan
Parish Universalist	Weezie Murphy
Unitarian Church of	Nance Parker
Kennebunk	Dale Rand
Matt Hunt	Andy Verzosa
Laurie Hyndman	Celeste Viger

CALENDAR OF EVENTS

April 29 & 30

Women In Management 23rd Annual USM Conference — Holiday Inn by the Bay, Portland. 8:30 a.m. — 4:45 p.m. \$185 for one day and \$295 for both days. For more information email conferences@usm.maine.edu. The **Maine Women's Fund is benefiting from 2 days of silent auction** — please contact liz@mainewomensfund.org with donations of products and services.

Month of May

Maine Women's Fund Mother's Day Celebration. Check out the enclosed shopping insert and support these businesses.

May 2

Aucocisco Gallery 1st Friday Art Walk. 157 High Street, Portland, 5 — 8 p.m. Featuring decoupage pieces by area artist Scott Potter. FMI call Liz Anderson 774-5513.

May 4

YWCA Race Against Racism — 5K run and walk. The race begins & ends at Spring Street, Portland. FMI call 874-1130 or visit www.ywcaptdme.org.

May 8

2003 Maine Initiatives Watering Can Awards Dinner — A Celebration of Social Change. The Taste of Maine Restaurant, Route 1, Woolwich, 5 — 8:30 p.m. FMI call 622-6294 or visit www.maineinitiatives.org.

May 11

Flatbread Company — Silent auction 6 — 8 p.m. to benefit the Maine Women's Fund, 72 Commercial Street, Portland.

May 15

Women's Leadership Initiative of Androscoggin Valley luncheon, open to the public. FMI call Lisa Daggett 753-6622.

June 3

The 2nd Annual Key Financial Forum for Women — *Achieving Financial Happiness* featuring Jean Chatzky, 8 — 11 a.m. The Marriott Sable Oaks, South Portland. **\$20 registration fee benefits the Maine Women's Fund.** Register online www.key.com/womensforum.

June 22

Women's Ride for Heart Health — sponsored by the Bicycle Coalition of Maine, a 5, 10 or 20 mile ride, held at Somerset Sports and Fitness in Skowhegan. FMI and registration call Deborah at 623-4511 or email info@BikeMaine.org.

June 27 - July 19

The Canoe Expedition for Maine Girls, for girls ages 14 to 17. The Chewonki Foundation is offering a three-week canoe expedition for adolescent girls from Maine. FMI contact Kirstin George at 518-946-7028 or kirstingearge@hotmail.com.

August 17-23

Zoey's Tec-Know Camp. A multi-formatted program geared to middle school girls. College of the Atlantic in Bar Harbor. Cost \$500 per camper. FMI call Vini Nair 749-9337.

WE DEEPLY APPRECIATE THE SUPPORT OF ALL OUR DONORS. THESE INDIVIDUALS AND ORGANIZATIONS

With their permission, we are proud to print the names of the individuals and organizations who contributed to the Maine Women's Fund

DONORS

Kate Adams
Kelly Adams
Barbara Adamson
Connie A. Adler, MD
Barbara B. Adrian
Gail K. Adshead
Nancy L. Agler
Josephine Ahrens
Vera Aiyyappa
Elaine Albright
Nancy & Jonathan Aldrich
Susan Amelia Allein
Diana & Thomas Allen
Merrie Allen
Nancy T. Allyn
Ann Marie Almeida
Joan & John Amerling
Jane A. Amero
Mary & Thomas Amory
Elisabeth Anderson & Bob
and Lily Ketzler
Karin Anderson
Larry & Janie Anderson
Maren Anderson & Earl
M. Collier, Jr.
Nancy Anderson
Sonya Anderson
Carol J. Andreae & James
P. Garland
Debra & Tom Andrews
Jennifer Andrews
Rita Andrews
Beth Ansheles
Nancy K. Ansheles
The Reverend Holly
Antolini
Susan L. Arledge
Sarah C. Armentrout
Rachel & Thomas
Armstrong
Robert Aitterbury
Anne Elise Aubry
Suzanne Austin
Ann Babbitt, MD
Barbara & Douglas
Babkirk
Jean Badran
Malika Baggins
Leigh Bagley
Eliza Bailey
Margaret M. Baillie
Elizabeth Baird
Catherine S. Baker
Meleta Murdock Baker
Roxanne Baker
Sophie A. Baker
Beth Bamford
Rosemary A. Bamford
Shannon Banks
Elizabeth A. Banwell
Celeste Bard
Sharon E. Barker
Donna Barmore
Laura C. Barnard
Trish Barnes
Stephanie Barrett
Miriam Bartheaux
Catherine W. Bartok
Ellen Barton
Ann Marie Bartoo
Bonnie Beach
Nancy Beatty
Barbara Beckelman
David P. Becker
Harriet Beeman
Lydia Bell
Barbara Bellisimo
Paula Benard
Macky Bennett
Valerie Bennett
Jane Benson & David
Hartley
Gail Benvenuta
Ashley Bergeron
Stephanie Betzold
Ann Beverage
Laurel Bezanson
Sheryl Bickel
Dauna Webb Binder
Connie Bingham
Penny & Robert
Binswanger
Darice Birge
Merrill Bittner & Nancy
Noppa
Judge & Mrs. Robert
Black
Scott M. Black
Wendy Blackwell
Elaine Blais
Judith Blanchard
Francine F. Blattner, MD
Marilyn Blinkhorn
Martha M. Block
Joy Bishop Blood
Constance Bloomfield
Caroline K. Bloy
Andrea Blunt
Arifa Boehler
Penny L. Bohac-Cardello
Gwyneth & Ken Bohr
Mary Bok
Jennifer Bolduc
Linda Bolduc
Ang Bond
Victoria Bonebakker
Margaret & Philip Booth
Tracy & Donald Booth
Megan Boothby
Elizabeth L. Bordowitz
Ann Borque
Marie Borroff
Jan Bosse
Kathleen H. Bouchard
Myrna Bouchev
Rosemary Bova
Odelle Bowman
Anna Bradbury
Susan W. Bradstreet
Teresa Rae Brady
E. Merle Bragdon MD
Eleanor S. Brainin
Katherine Branch
Ann Brandt
Elaine Brandt
Joan L. Braun
Phyllis Braze
Dr. Patricia A. Bredenberg
Catherine Breen
Emily Rand Breitner
Martha & Doug Breunig
Ellen Briggs
Kaitlin A. Briggs
Elaine Briggs
Suzanne Brightbill
Carmen L. Brochu
Erin Brockette & Shane
Reilly
Lee & Jamie Broder
Cynthia Brogan
Marilyn T. Bronzi
Leah Brooks
Dr. Bets Brown
Catherine D. Brown
Mr. & Mrs. Oliver Brown
Hugh N. Brown
Laura & Lloyd Brown
Rommy Brown
Anne E. Browning
Nicole Bsuliak
Linda Buckmaster
Bonnie Bump & Jolene
Bouffier
Martha S. Burchenal
Deborah M. Burd
Jane Burdick
Johannah E. Burdin
Helen & Stephen Burlock
Elaine T. Burton
Deborah E. Burwell
Judith Kaylor Burwell
Sharon L. Bushey
Kate Butler
Sandy Butler
Peter Buttenuwieser
Helen Caddie-Larcenia
Lindsey & Andrew Cadot
Lindsay Cadwallader
Kathryn J. Callan
Jennine Cannizzo
Kimberly Cannon
Carol Capomaccio
Louis Carl
Lois Carlson
Charlotte & Timothy
Carnes
Elaine Caron
Sarah Carpenter
Hilary Carr
Carol Carriuolo
Dana & Brownie Carson
Penelope & Robert
Carson, Jr.
Jan Broberg Carter
Erin Cassidy
Cindy Castleman
Mary R. Cathcart
Paula Caughey
Katharine G. Chaikind
Patricia Chandler
Joyce M. Chaplin
Kate & Tom Chappell
M. Bridget Chase
Jill A. Checkoway
Helen Chen
Robin Chibroski
Chun Son Choe
Eileen Chretien
Marie Kristine
Christensen
Cynthia & Bruce Churchill
David & Marcia Chute
Elaine Cinciva & Colin
Baker
Erin Cinelli
Gail K. Cinelli
Elinor Clark
Gordon Clark
Lauretta Clark
Karen Rhodes Clarke
Susan B. Clarke
Margaret Cleveland
Judith M. Coburn
Krista Cogswell
Christine Cole
Lynn E. Cole
Roxanne Cole
Mary I. Collins
Grace Conant
Alice W. Conkey
Thorne C. Conley
Eileen M. Conlon
Joseph P. Conrad
Peter B. Cook
Susan Cook
Susan F. Cook
Eliza Cope Nolan
Madeleine G. Corson
Margaret Cote
Laurel Cox
Nancy Coyne
Liz Crane
Ann Craven
Barbara L. Crider
Sally Crissman
Triss Critchfield
Monique Y. Crochet
Norrie Crocker
Christy Cross
Janet & Bill Cross
Leah Cross
Catherine Crute, MD
Darcy Cunningham
Alice Cunningham-
Spindler & Richard
Spindler
Carol Curran
Jean Curran & Jeffrey
Sosnaud
Jennifer G. Currie
Deborah Curtis
Nanci-Ames Curtis, MD
Catherine E. Cutler
Joanne D'Arcangelo
Lisa Daggett
Kym Dakin
Jo Anne Dauphinee
Kelly Davis
Sally Davis & Larinda
Meade
Shirley L. Davis
Karen K. Day
Julie De Sherbinnen
Kayt DeMerchant
Ian Deming
Kate Dempsey
Connie Densmore
Mary Ellen Deschenes &
David Talbot
Josephine H. Deshey
Peter DeTroy & Marilyn
Reynolds
Valerie Devuyt
Pamela Diamantis
Karen & Walter Dicks
Carla Dickstein
Mari Faith Dieumegard
Dorothy Diggs
Claudia Diller
Michelle Dillon
Karen Dobbyn
Joan Dodge-Kerr
Kim Doll
K.L. Dominguez-Brann
Ann Donaghy & Nancy
Gunzelmann
Patricia Donahue
Sheila Donahue
Constance M. Donovan
Geraldine T. Dorsey
Elizabeth & Wells Dow
Susan Glick
Jennifer Dowell
Margaret R. Downing
Norma Dreyfus & Stanley
Lane
Deanne Drinkwater
Nancy M. Drisko
Anne S. Drummond
Susan F. Dubuque
Harriet W. Duer
Camilla Dufresne
Lauri Dugas
Joan Dunham
Mary F. Dunn & Ron
Shapiro
Doris Dutil
Janice W. Eddy
Susan Edson
Donna Edwards
Elizabeth E. Ehrenfeld
Jean H. Eichenbaum
Barklie Eliot
Caroline S. Eliot
Patricia P. Ellen
Moya A. Elliot
Sara Jane Elliot
Bev Engel & Paul Schrodt
Janan T. Eppig
Elaine M. Epstein
Allison B. Eremita
Kelley Erickson
Anne Erikson
Teresa Esposito
Wanda J. Estes
Ginne Evan Stoll
Jean J. Evans
Kay R.H. Evans
Doris Ewing
Suzanne & Robert Ewing
Eileen Fair, LCSW
Stefanie Fairchild
Judith & David Falk
Charitable Trust of
the Community
Foundation for the
National Capitol
Region
Diane C. Fallon
Nona F. Famous
Betsey & Hugh Farrington
Jeannette Faunce
Rhonda Feiman
Marcia Feller
Christine Fenno
Carole Ann Fer
Catherine F. Field
Amy Fischer
Margaret & John Fischer
Catherine H. Fisher
Helen & David Fizio
Alia Flaherty
Gro M. Flatebo
Judith Fletcher Woodbury
Laurie Fogelman
Dorothy D. Foote
Laura A. Fortman
Aileen Fortune
Lottie Fortune
Nancy Foss
Sally C. Fowler
Barbara R. Fowles
Nancy Fox & Jon Edwards
Louise Franck Cyr
Lorie Franklyn
Skeek Frazee
Heather T. Frazer
Jeanette L. Fruen
Susan Fryberger
Vera & Andrew Funtsch
Janet & George Galgay
Marjorie Galgay
Valerie Gallin
Ann Gallowpe
Felicia A. Garant
Connie Garber
Elizabeth Garber
Kathryn Gardner
Donna Gaspar Jarvis
Paula Gaudet
Deborah Pepin Gelardi
Noel Genova
Jodie Gentner
Susan George, MD & Miles
Epstein
Karen A. Geraghty
Marie G. Gerrity
Liane Giambalvo
Christine S. Gianopoulos
Joanne & Lou Giard
Michelle K. Giard
Susan Gifford
Jane Gilbert & Nancy Fritz
Marguerite Gilfoil
Linda Gill
Carol F. Gillis
Michele Giroux
Jane Glass, DO
Susan Glick
Elizabeth Glover
Eleanor J. Goldberg
Ellen F. Golden
Jennifer Goldman
Barbara M. Goodbody
Cornelia Goodrich
Sandra Goodlen & Paul
Merrill
Katherine Gould
Julia Gray Stabley
Cornelia A. Greaves
Bonnie Green
Linda Gregory
Beverly Griffin
Charleen Griffin
Sharon E. Grossman
Judy Groth
Lauren Grousd
Colleen Grover
Debra Guimont
Betty Guendersdorf
Merna & Joseph
Guttentag
Krista Haapala
Barbara & Edward
Haddad
Barbara P. Hadlock
Shirley N. Hager
Patricia Hagge
Mary Haggerty
Barbara Hall
Linda Ham
Carol Hamalainen
Meredith R. Hamer
Dagmar S. Hamilton
Ruthanne F. Hamlin
Lindsay H. Hancock
Susana Hancock
Sally M. Hands
Kathryn Hanley
Margaret Hansen
Beth Hanson
Leslie Harkins
Wendy Harlan
Gay Haroutunian
Laura Harper
Ann & Charles Harriman
Jean Harris
Katie F. Harris
Linda & Parker Harris
Lynn L. Harrison
Katherine Hartford
Anne Harwood
Hilary Harwood & Frank
Bridges
William Harwood
Sarah S. Hasbrouck
Mary Louise Haskell
Tracy Haskell
J. Bourge Hathaway
Vivian Hathaway
Lillian Haversat
Leslie A. Hawkins
Lynn Hawkins
Jan K. Hayes
Sara J. Hayes
Jennifer Heald
Nan Heald, Esq.
Karen L. Heck
Peter Hedstrom
Lynn Heinz
Joan R. Heller & L. Diane
Bernard
Harriet P. Henry, Esq.
Janet Henry
Nancy E. Herter
Michael Herz & Kate
Josephs
Gayle R. Hichborn
Diane Higgs
Alison D. Hildreth
Nancy Hill
Lily Hill
Marquita K. Hill
Mary A. Hillas
Edna C. Himeline
Barbara Hintze
Theresa Hodge
Robin Lin Hodgskin
Lucky Hollander
Brita Holmquist
Marion Holshouser
Patricia Holt
Kathy Hooke
Alix Hopkins
Tory & Jonathan Hopps
Judith A. Horan
Nancy S. Horie
Helaine Hornby
Sandra & John Hotchkiss
Annie Houle
Margaret Hourigan
Suzanne House
Christine T. Howes
Marie Hoyes
Sherry F. Huber
Elizabeth S. Huebener
Linda Hunt
Susan E. Hunter
Kathleen Huse
Jennifer Hutchins
Patricia E. Hutchinson
Laurie Hyndman
Paul V. Ideker
Susan Inches
Kelly Irving
Bernadette Iulucci
Jean L. Jackins
Laura Jackson
Charlie Jacobs
Naomi Jacobs
Maija Jansson
Gladys Jarrett
Julie Jenkins
Avery Jenkins
Sandra Jensen & Samuel
Broadus
Anne B. Jepsen
Norine C. Jewell & David
R. Ault
Frances H. Johnson
Judith Johnson
Sarah Johnson
Sheila B. Johnson
Bambi Jones & David
Moskovitz
Cornelia Jones
Joanna M. Jones
Judith Jones & Nancy
Hendrie
Meredith H. Jones
Pamela Joy
Andrea & David Juers
Sally Jurgeleit
Julia G. Kahrl
Pauline E. Kaiser
Trudy Kanter
Edith & Bennett Katz
Lisa Keenan
Nancy B. Kelleher
Marie Keller
Thomas H. Keller
Lacey S. Kellett
JaneA Kelley
Phyllis Kelley
Juliet S. Kellogg
Maryann Kelly
Maureen Kelly
Nancy A. Kelly
Sue N. Kelly
Jane Kenneally
B.J. & Henry Kennedy
Donna Kennedy
Anna Kent
Bobbi Keppel
Penny L. Kern
Carol Kessler
Colleen A. Khoury
Cathy Kidman
Beth & Jamie Kilbreth
Karen Kilmer
Susan Kinkelaar
Ann R. Kinney
Kristina & David Kirkham
Anna Marie Klein
Ann D. Knowles
Cathryn B. Knox
Susan Koen
Aimee Koban
Carol I. Kulberg
Sheera LaBelle
Anne W. LaBossiere
Aileen LaBrie
Suzanne LaCroix
Gloria & Lincoln Ladd
Nancy & Samuel Ladd
Elyse LaFond
Rachel LaGolic
Linda Laguerre
Marilyn A. Lalumiere
Valerie Lamont
Jane Lancaster
Rita Lane
Jana Lapoint
M.J. Larned
Jeannine Laroche
Dorothy B. Larrabee
Margaret Lassen
Diane Laurendeau
Paul Kando
Roberta Laverty
Pressley Lawrence
Rebecca Leamon
Alison Leavitt
Helen G. Leddy
Catherine Lee & Robert
Moyer
Dix Leeson
Judith Leibowitz
Lisa & Lee Leiner
Joan S. Letzter, MD &
Ken Spirer
Barbara Leonard & Daniel
Marra
Tory Leuteman & Doug
Robinson
Gloria P. Leveille
Lisa Levinson
Shari L. Lewchian & Bert
B. Meek III
Betty Lewis
Emily Lewis
Sara E. Lewis
Cheryl A. Libby
Phyllis Libby
Nancy Lightbody
Alison G. Linsley
Hilidie J. Lipson
Liz Lisberger
Barbara McKusick Lisourd
Elizabeth Listovich
Anne Littlefield
Anne Litwin
Susan D. Livesay
Cynthia Livingston
Leslie Livingston
Joan Locasio
Ruth L. Lockhart
Betty G. Lockwood
Lynne Lomac-MacNair
Carole & Joseph Long
Deborah Loranger
Ms. Victoria Loring
Heidi-Anne Loughlin
Bonnie B. Lounsbury
Marjorie Love
Debra Lovsin & Jeffrey
Young
Mr. & Mrs. Peter Lunder
Sarah Lynch
Sarah MacColl
Caroline Macdonald
Margaret F. MacDonald
Peggy Anne Mack
Kate Maginn
Lydia Maier
Auta M. Main
Donna Maiorino
Doug Malcolm
Katherine & Jack Mann
Diana Mann-Schnake
F. Virginia Marcuri
Jo-Ann H. Marcus
Norma Marin
Jo Ann Martin
Julie A. Martin
Lynn C. Martin
Susan B. Martin
Sibyl Masquelier
Karen A. Massey
MaryBeth Mathews
Paty Matrai
Jean E. Mattimore
Susan E. Mavrinac
Carolyn B. May
Marian F. Mc Aleenan
Ursula McAllister
Janet C. McCaa
Andrea Thompson McCaill
Mary McCann
Laurie McCannon
Michele McCarthy
Valerie F. McClead
Dale McCormick
Suzanne U. McCormick
Caren A. McCourtney
Gertrude McCue
Marian McCue
Sydney Bradford
McDowell
Darcie McElwee
Kerry McGaffey
Myrna McGaffin
Roberta McGann
Terri McGehee
Cynthia McGovern
Kathryn McInnis-Misenor
Lori McKay
Holly H. McKenny
Gael May McKibben
Sanna McKim
Linda McMahan
Cynthia S. McMullin
Pam McNally
Cornelia McNamara
Claire McNeely
Elizabeth McPherson &
Paul Kando
Mary McPherson
Colquitt Meacham
Sarah S. Meacham
Betty-Jane S. Meader
Ellie Mercer
Sally & Donald Merchant
Toni Merrick
Alexandra K. Merrill
Leslie Merrill
Luann Merritt
Gail & Andy Meyer
Mary Lou Michael
Florence Michaud
Bonnie Rukin Miller
Cheryl Miller
Lisa Miller
Nancy Baker Miller
Gloria W. Milliken
Karen Milliken
Margot & Roger Milliken
Dora Ann Mills & Michael
Fiori
Mary Beth Mills
Judith Miskell
Lloyd Mitchell
Judith Moll
Jane & William Moody
Liza Moore & Arnie
MacDonald
Eugenie Moore
Karen Moran
Susan Moran
Donald Morang
Molly Morrell
Nancy & Robert Morrell
Carol Morris
Marta Morse
Janet M. Muddle
Margaret Muir

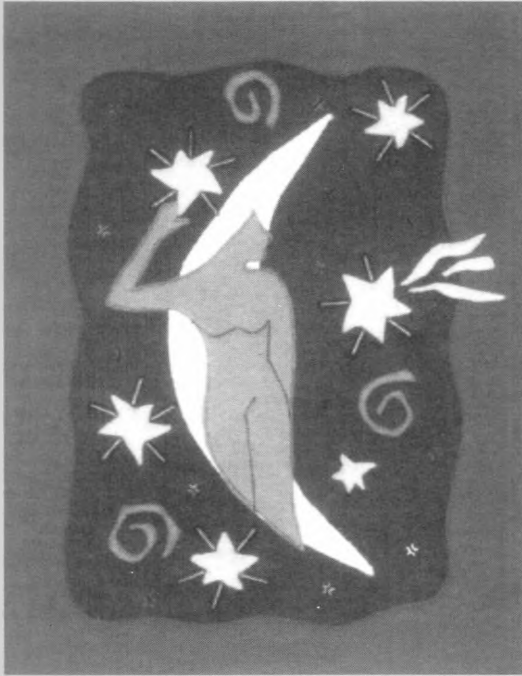
HAVE CONTRIBUTED GENEROUSLY TO CREATE POSITIVE CHANGE FOR WOMEN AND GIRLS IN MAINE.

during 2002, and we extend our thanks to the numerous contributors who have chosen to give anonymously.

- Patricia Mulholland
Bridget Mullen
Frances A. Mullin
Ellen Murphy
Kathleen Murphy
Louise Murphy
Katie Murphy & Peter Lindsay
Victoria Murphy
Carolyn B. Murray
Martha Naber
Tricia Nadaff & Dan Spratt
Vinita Nair
Gilda E. Nardone
Dianne L. Nason
Mary Lou Nason
Susan Neale
Mary P. Nelson
Merle R. Nelson
Suzan Nelson
Tom Nelson
Diane Nichols
Anne E. Niemiec
Jennifer R. Nolan
Kathleen A. Norris DC
Ann H. Norsworthy
Christiane Northrup, MD
Susan Norton Gould
Kerry O'Brien
Catherine O'Connor & John Kelly
Janet N. O'Toole
Frankie & Ben Odom
Chinyere Okafor
Destry Oldham-Sibley
Deborah Oliver
Kathryn Olmstead
Roxanne Olmsted
Karen Olson
Whitney Oppersdorff
Mary E. Orear
Heidi S. Osborn
Peggy L. Osher
Patricia N. Page
Denise K. Palmer
Esther & Paul Pappas
Christine Parenteau
Katrina R. Parson
Herbert Parsons
Sally Paterson
Richard & Michele Pattenau
Sally-Lou Patterson
Carol H. Payson
Susan Peabody
Nancy H. Peck
Heather Pelkey
Helen Pelletier
Brenda & Pat Peluso
Dara Perfit
Murray Perlmutter
Andrea Perry
Matthew Perry
Robin Perry
Mary Peters
Lin Peyton & Morris Hancock
Kristina Pfeifer
Gail Pfeifle
Alice Mary Pierce
Mrs. Dodie Pierce
Chellie Pingree
Judith Pitchforth
Cathy M. Plourde
Pamela P. Plumb
Victoria S. Poole
Bonnie Porta
Amy Porter
Clara Porter
Barbara Potter
Katherine B. Potter
Selma Potter
Muriel A. Poulin
Judith A. Powers
Sally M. Powers
Suzanne I. Pratt
Joan Prouty
Dorinda P. Putnam
Lucy G. Quimby
Erica & Kathryn Quin-Easter
Laura Quine
Rebecca A. Quinlan
Julia Radomski
Laura H. Ragland
Stephanie Ralph
Jose Ramirez
Hilary Rapkin & Will Stiles
Rose Rapp
Nancy M. Read
Lois G. Reckitt
Wilma P. Redman
Phyllis Rees
Ala H. Reid
Patricia Renaud
Gail Rice
Paula Richard
- Lynne Richards
Beth Richardson
Edith A. Richardson
Sandra Richardson
Toni Richardson
Valerie J. Ricker
Ruth Riddick
Lisa Rideout & Maggie Foley
Barbara Riegelhaupt
Diana I. Rigg
Ruth Rioux
Ruth & Samuel Ristich
Renee Roach
Shaye McGann Robbins
Tina Roberts
Sarah Robinson
Carol Robison, DVM
Michelle A. Robitaille
Marilyn Moss Rockefeller
Liz Rogers
Joan & A. Raymond Rogers
Phyllis Rogers
Sharon L. Rosen
Libby Rountree
Lucille Roy
Elizabeth H. Ruff
Liza Russell
Tracey Russell
Virginia & Peter Russell
Libby Rust
Emilia Ruid
Tori Ryan & Dan Del Rossi
Susan Rybacki
Denise A. Sakal
Mary R. Saitonstall
Joan B. Samuelson
Kelly Sanchez
Joan C. Sandberg
Kris Sandin
Eleanor L. Sapko
Anne Hallett Sarazin
Eleanor Sargent
Judy M. Sargent
Natica B. Satterthwaite
Arline Saturdayborn
Susan Savell
Nan S. Sawyer
Shawnee Sax
Donna Saxby
Elizabeth Ward Saxl
Elise Scala
Imelda A. Schaefer
Margaret Schaffer
Gillian Schair
Mary Schendel & Philip Gleason
Dr. Joseph & Barbara Schenkel
Jenny Scheu & John Ryan
Molly P. Scheu
Elizabeth N. Schiller
Anne B. Schink
Julie & Skip Schirmer
Lizabeth Schley
Barbara & William Schneider
Tobi L. Schneider
Ann Koch Schonberger
Amanda Schumaker
Mary Schwanke
Dorothy & Elliott Schwartz
Maxine Sclar
Madeline Selich
Joy Scott
Elizabeth Scully
Jane Searles
Janice Searway
Heather Seasonwein
Sarah L. Seder
Mary-Katharine Sells
Elizabeth G. Serrage, MD
Shireen Shahawy
Peggy F. Shapiro
Deborah L. Shaw
Susan Shaw
Sarah Shed & Joel Davis
Elizabeth Sheehan
Margaret A. Shepp, MD
Alice G. Sheppard
Rose Shill
Gretchen Sibley
Anita Siegenthaler
Kim Simmons
Margo C. Simmons
Sandra L. Sincero
Liz Sizeler
Sarah Skillin
Alice & Wickham Skinner
Kyle Slayback
Paula Slocum
Cary Slocum
Debra Smith
Deirdre Smith
G.E. Smith
Ms. Jane Smith
- Karen Smith
Neila Smith & Mark Rockwood
Patricia Smith
Pat Born Smith
Rebekah J. Smith
Susan Crowley Smith
Anne Snow
Nonny Soifer
Dr. Cynthia Sortwell
Margaret W. Soule
Caroline M. Southall
Jennifer Southard & Edward Suslovic
Stephanie M. Southard
Courtney N. Spencer
Christopher & Eunice St. John
Susan St. John
Donna Stackhouse
Wells R. Staley-Mays
Sarah Standiford
Anne Stanley
Rebecca H. Stanley
Karen Stathoplos & Kim Krauss
Beverly Stearns
Susan Stedman
Lael Stegall
Selma Sternlieb
Jeri Stevens
Patricia M. Stevens
Suzanne Stevens
Briana & Kelly Stewart
Mary H. Stewart
Anita C. Stickney
Elizabeth S. Stickney
Lucy Stinson
Marge Stockford
Cindy Stocks
Sara G. Stockwell
Alyson F. Stone
Enid W. Stone
Judith T. Stone
Katherine Stovall
Harold Stover
Karen D. Stram
Florence & Kurt Strauss
Ethan K. Strimling
Mary & Ludek Strnad
Herbert Stroup
Barbara & Ralph Struzziero
Linda A. Stubblefield
Sharon Sudbay
Wendy P. Suehrstedt
Brenda Sullivan
Andrea Summers
Maureen Summers
Betts B. Swanton
Susannah Swihart
Deborah Swinbourne
Carol Sylvester
Sarah Szwajkos
Annee Tara
Ann Tartre
Jane Tawney & Samuel Shaw
Christine H. Taylor
Amy K. Tchao
Brooke P. Tenney
Denise & Sheldon Tepler
Andrea Thebaud
Kellie Theriault
Pam Thoma
Sandra Thomas
Lee Thompson
Teresa Thompson
Stephanie Thostenson
Evelyn H. Thurston
Pam Tift
Martha A. Timothy
Elizabeth A. Tipper
Jennifer Tobin
Judith Toland
Sigrid Tompkins
Christine Torraca
Elizabeth Torraca
Gloria Torraca
Kathren Torraca
Laura Totta
Barbara Townley
Susan Trabucchi
Donna & Greg Trundy
Sarah Tucker
Mariana Stockly Tupper
Nancy Tuttle
Carlotta Tyler
Suzanne Umland
Kathryn & John Underwood
Joan & Douglas Uraneck
Wilma P. Uraneck
Jessica Vamvakias
Carol & Thomas Vaughan
Kathryn Vezina
Celeste Viger
Eloise Vitelli
- Beth Vogel
Nancy Voss
Lise Wagner
Sarah Waite
Celia Wakefield
Sara M. Walbridge
Ann S. Waldron
Susan Walker & Robert Lightfoot
Dawn Walker-Elders
Alice P. Wallis
Debra Walsh
Sandra Walsh
Nancy Wanderer & Susan Sanders
Dr. Carol Ward & Dr. Charles deSieyes
Judith Ward
Susan Warner
Kathleen Webster
Wendy Weiler
Mrs. Jane Weinberger
Jill Welch
Jane Wellehan
Alice N. Wellman
Joan W. Welsh
Katarina Weslien
Barbara West & Marlene Barter
M. Gwin Wheatley
Kay White
Mr. & Mrs. John White
Robin F. Whitten
Elizabeth Wicander
Tressa Wickoren
Kira Wigoda & Daniel Sobel
Jennifer Wikstrom
Linda A. Wilcox
Nancy G. Wilds
Valerie Willifong
Linda Williams
Rita S. Willis
Robert Willis & Karen Wright
Cathryn I. Wilson
Judy & Norm Wilson
Susan H. Winn
Kitsy Winthrop
Nancy Wintle
Theresa & Donald Wiper
Carol Wischamper
Carolyn S. Wollen, Esq.
Anne Wood
Diane & Joe Wood
Jennifer Wriggins
Aagot C. Wright
Julie Wright
Rebecca Wright
Juli Wuori-Cropley
Betty Wurtz
Carol Wynne
Morewenna Yackzan
jann L. Yankauskas
Donna Yellen
Rebecca Harris Yturregui
Rita Zanichowsky
Lucinda M. Ziesing
Fran & Daniel Zilkha
Anne B. Zill
- BUSINESSES FOUNDATIONS ORGANIZATIONS**
Acadia Tea Company
Agricola Farms
Amaryllis Clothing Co., Inc.
Anjon's Italian Restaurant
Anthony's Italian Kitchen, Inc.
Aucocisco Gallery
The Avalon Group
Avena Botanicals
Back to Earth Gardenworks
Baker Newman & Noyes
The Balancing Act
Barbara's Kitchen & Cafe
Barber Foods
Bath Iron Works Corporation
Bayview Gallery
Bernstein Shur Sawyer & Nelson
Bonnema Potters
Books n' Things of Bethel
Books, Etc.
Botanico
Breggy Oil Service
Brown Dog Bikes
Brown Goldsmiths & Co.
Burgess Advertising & Associates, Inc.
The Calico Patch
- Caring Unlimited
Carpe Diem Coffee
Roasters
Cedar Breeze Studios
The Center for Grieving Children
City of Bath
Lacy City/Monroe Salt Works
Coastal Documentation
Coastal Enterprises, Inc.
Coffee By Design
Coyote Moon
Crabtree & Evelyn
Creative Energy Decisions
Dallas Women's Foundation
Dead River Company
Deighan Associates, Inc.
DeLorme Mapping Co.
Devany Doak & Garrett Booksellers
Diversified Communications
Drop Me A Line
Dunne Roman
Eberhardt/Impact
Edwards Services
Encore
Fenestra, Inc.
Fireside Pottery
Fine Miniature Quilts
First Parish Universalist
Unitarian Church of Kennebunk
Flatbread Portland, Inc.
Fore River Foundation
Framemakers
Gallery Music
Gallery Seven
Garrand & Company
General Electric Foundation
Good Food Store
The Good Table
Grandy Oats
Grasshopper Shop of Rockland
Greater Portland Bone and Joint Specialists
Greenhut Galleries
Greenhouse Group
Hannaford Bros. Co.
Hanson Park Press
The Roy A. Hunt Foundation
Hutchins Jewelers
June Fitzpatrick Gallery at High Street
Just Maine Made
KC Cleaning Services
Kennebunk Savings Bank
Kennedy Studios
KeyBank
The Stephen & Tabitha King Foundation
Klarity Multimedia
Helen and George Ladd Charitable Corporation
Lapoint Industries
LeBlanc & Young, P.A.
Longfellow's Greenhouses
Lovell Designs
Macdonald Page Schatz Fletcher and Co., LLC
Magnolia
Magpies
Maine Ballroom Dance
Maine Bank & Trust
Maine Center for Economic Policy
Maine Community Foundation
Maine Council on Economic Education
Maine Funders for Change
Maine Medical Center
Maine Municipal Association
Maine Philanthropy Center
Maine Turnpike Authority
Maine Women's Policy Center
MaineShare
Mary Kay, Heather Hansen, Independent Beauty Consultant
Material Objects
Mediahunter.com
Morning Glory Natural Foods
O'Naturals
- Once A Tree
Out On A Whimsy
Paradiso Salon & Spa
Pentagoet
Peoples Heritage Bank
Pier One Imports
Pine Tree State 4H
Pooh Corner Farm
The Portland Chandler
Portland Press Herald/
Maine Sunday Telegram
Portmanteau
Queen of Hats
Rapid River Company
Red Riding Hood
Financial Services, LLC
Redhouse Architects
The Resourceful Home
Rockport Chocolates
Rocky Village Gifts
Royal River Natural Foods
Saco/Biddeford Savings Bank
Scarborough Legal Center
Sea Otter Foundation
Serenity Corners
Serenity Hair Care and Day Spa
Skillin's Greenhouses
The Standard Baking Company
Starlight Cafe
The Stein Gallery
Contemporary Glass
Stitchery Square
Tavecchia
Terra Firma
TerraCotta Stylish Stuff
Trillium
Trillium Asset Management
University of Maine
Upfront and Pleasant
Gourmet
Verizon
Walkabout
Whats Up
Wild Rose
Women In Harmony
York County Community Action Corporation
- Lorraine Ryan
Ellie Sargent
Susan Shaw
Alison P. Smith
Rebekah Smith
Cynthia Sortwell
Castleman
Rebecca Sparks
Adrien Spencer
Lisa Stathaplos
Juliana Stoll
Murielle Theriault
Anna Marie Thron
Anh Thu Thi Truong
Christine Torraca
Charlene Vaughan
Carol Wishcamper
Caroline Wollen
The women and girls of Maine and around the globe
Women Business Owners
The Women of the Maine Women's Fund
Bethany Woodworth
Rebecca Harris Yturregui
- GIFTS MADE IN MEMORY OF**
Claire Allworth Cole
Richard Ames
Dr. Betty W. Atterbury
Kathryn Bell Childs
Grace Bement
Shelly Bergeron
Harriette W. Berry
Selma Black
Harriet Blades
Claire Boyden Renaud
Sarah Jane Brooks McCaa Abraham
Anna Carlisle Jackson
Helen Carter
Eloise Choate
Carla W. Cloutier
Susan Cony Breck
Eleanor Cook Bragdon
Karin M. Cox
Barbara Coyne
Nancy Cray
Barbara Creighton
Lois Jameson Creighton
Elinor W. Crocker
Isabelle T. Crockett
Keisha Rose Daggett
Isabelle Davis White
Shirley Dobbyn
June Dunn
Kalopi Economy
Jean Eddy Sprague
Rita Fallon
Charlotte Fineberg
Ethel T. Gale
Kay Gardner
Barbara Hodgskin
Galen W. Howes
Irv Kellman
Patricia Kenney Parsons
Joy Kreisler
Winnifred Lockhart
Mary
Dr. Karen Molvig
Mary R. Morgan
Ida O'Neil Stoddart
Laverne Patten
Fannie Peabody
Germaine Perreault
Helen Poors Watson
Lee Richards
Charles Robinson
Alice Rockray
John Romanyshyn
Jackie Russell
Mary Scott
Sandra Shaw
Harry Shill
Ada L.S. Smith
Linda Smith Dyer
Edith Sunderman
Mabel T. Weymouth
Donna J. Wuori
- GIFTS MADE TO HONOR**
Andrea Ames
Patty Ames
Sophia Beckerman-Lee
Eliza Beckerman-Lee
Leah F. Binder
Arielle Blattner
Anna Brockett
Bets Brown
Patricia Castelli
Sue Cook
Ellen Corson Barton
Elizabeth Corson Gagnon
Joanne D'Arcangelo
Virginia de Courcy
Carol Del Rossi
Jordana DeZeeuw
Chris Ferguson
Lottie Fortune
Jennifer Fox
Marian Garrand
Sally M. Hands
Linda & Parker Harris
Beverly Heald
Beth Herrick
Carly Hoppes
Nancy Hudak
Kate Kennedy
All KeyBank employees
Beth L. Klingensmith
Stella Lado
Anna Lee
Mary Leonard
Mary Lomac
Susan Loughrey
Maine Women's Fund
Rosemary Marra
Jill McGowan
Jolene McGowan
Margaret McLaughlin
Chris Merchant
Alexandra Merrill
Margaret Morell
Eleanor Morse
Cam Tu Nguyen
Marrissa Nickelsberg
Regina Oliver
Irene Perry
Planned Parenthood
Penny Plourde
June Richardson

Every effort has been made to ensure this list's accuracy. However, mistakes, omissions and other blunders inevitably slip by, and we sincerely apologize for any error that may have occurred. Please contact the Maine Women's Fund at 207/774-5513 or toll free 877/254-0077 regarding any corrections, comments or questions.

2003 MAINE WOMEN'S FUND AWARD



The 2003 *Maine Women's Fund Awards* will be presented at the *Evening to Honor Maine Women and Girls* on **Thursday, October 2, 2003** at the Holiday Inn by the Bay in Portland.

We need your help to identify and select these honorable women and girls.

Four *Maine Women's Fund Awards* will be presented to women and girls whose efforts make a difference in the lives of women and girls. This year, we have reserved at least one award to recognize a girl between the ages of 14 and 20.

To receive a nomination form call 774-5513 or visit our website www.mainewomensfund.org. All nomination materials must be submitted together in one package. **Submit your completed nomination packet by Friday, May 23, 2003 to:**

MAINE WOMEN'S FUND
PO Box 5135
PORTLAND, ME 04101

We are proud to feature Maine artist Heather Alexander in the promotional materials for the 2003 Evening to Honor Maine Women and Girls.

FRIENDS FOR THE FUTURE

Planned gifts such as bequests and charitable trusts, no matter how large or small, are an excellent way to ensure MWF's financial future. Please let us know if you have named MWF in your will or trust. We would like the opportunity to thank you for your generosity and to include you in our Friends for the Future group.

- _____ I have included MWF in my will or trust.
- _____ I have included MWF in my will or trust, however, I wish to remain anonymous.
- _____ I would like more information about how to include MWF in my will or trust.
- _____ I would like more information about charitable bequests.

Name: _____

Address: _____

City, State, Zip: _____

Phone: _____

Please return to:
Maine Women's Fund
P.O. Box 5135
Portland, ME 04101

how you can Contribute

No matter what its size, **every contribution is important.** Your gift will enable the MWF to continue providing opportunities and promoting solutions that allow women and girls to achieve their fullest potential. There are many ways to contribute, and we offer technical guidance for all donors wishing assistance:

Cash gift: No explanation necessary!

Pledge: A pledge of any amount and on any schedule.

Bequest: Designate the MWF as a recipient of part or all of your estate.

Insurance: Designate the MWF as beneficiary of a life insurance policy.

Stocks: By contributing stock, you may receive tax advantages.

Memorial/Honorary: Honor someone living or deceased, or celebrate any occasion with a gift in the name of someone who has made a difference in your life.

Employee Matching: Have your employer match your contribution.

MaineShare: Designate your payroll deduction to MWF.

Money donated to the MWF is professionally managed and carefully allocated. If you have any questions, please call the MWF office 774-5513. The MWF is a 501(c)(3) agency. Gifts to the MWF are tax deductible.