

10-1903

## Bar Harbor, 1903

Sanborn Map Company

Follow this and additional works at: [https://digitalcommons.library.umaine.edu/me\\_sanbornmaps](https://digitalcommons.library.umaine.edu/me_sanbornmaps)

 Part of the [Geography Commons](#), and the [History Commons](#)

---

### Recommended Citation

Sanborn Map Company, "Bar Harbor, 1903" (1903). *Sanborn Maps of Maine*. 50.  
[https://digitalcommons.library.umaine.edu/me\\_sanbornmaps/50](https://digitalcommons.library.umaine.edu/me_sanbornmaps/50)

This Book is brought to you for free and open access by DigitalCommons@UMaine. It has been accepted for inclusion in Sanborn Maps of Maine by an authorized administrator of DigitalCommons@UMaine. For more information, please contact [um.library.technical.services@maine.edu](mailto:um.library.technical.services@maine.edu).

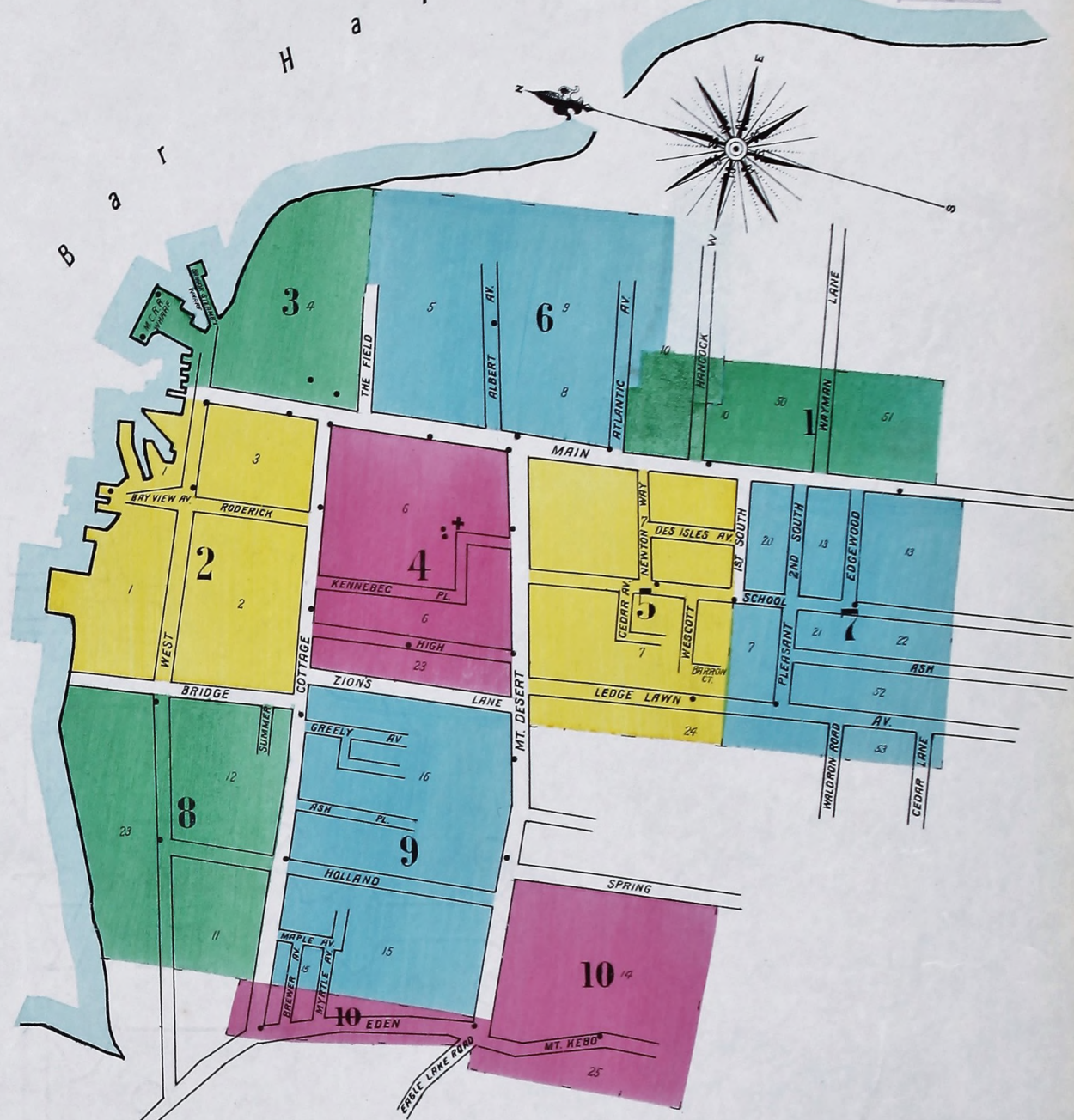
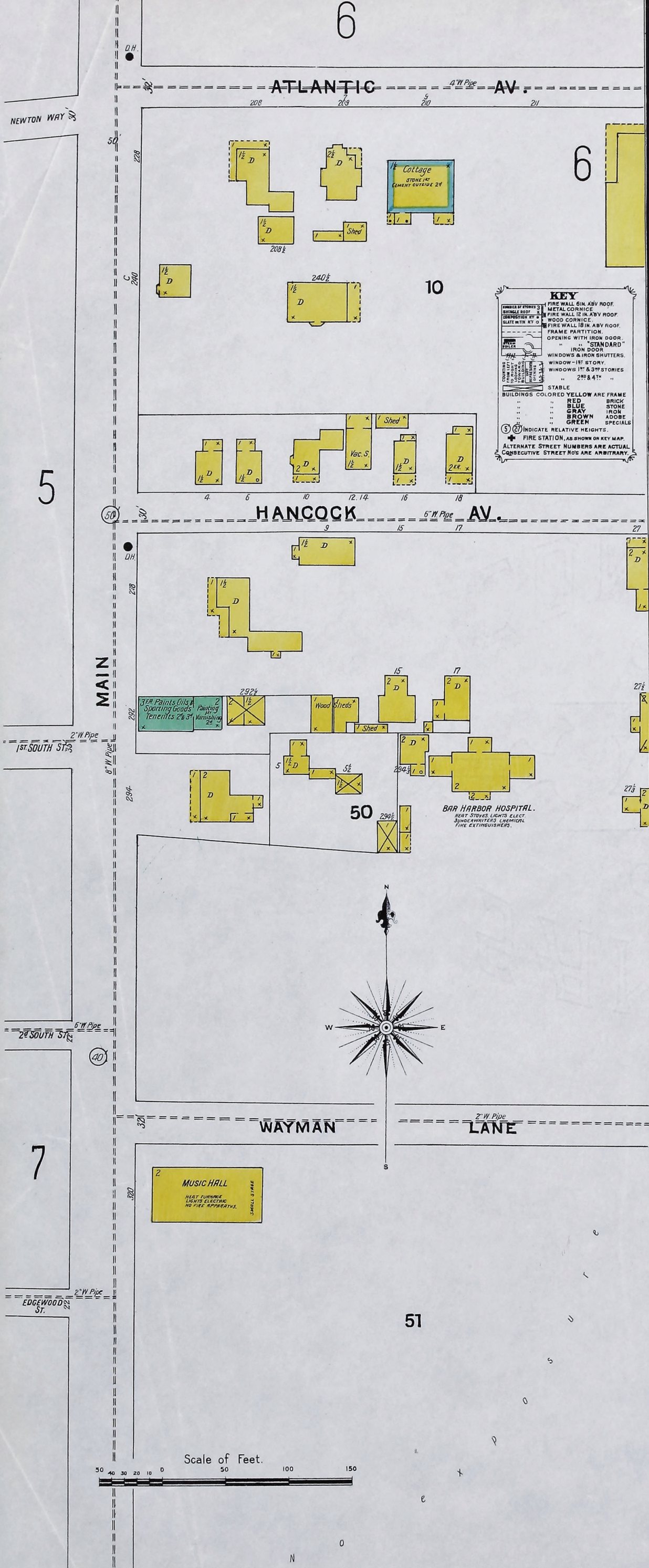




Map Division  
DEC 10 1903  
Library of Congress  
1000  
4409

NOTE Gravity system of water works. Water supply from Eagle Lake 2 1/2 miles distant, 16" and 24" mains from lake to town. Elevation of lake 275 ft. above sea level. Two Deane duplex force pumps, at light and power station, available in case of emergency. 45 Hydrants, Pressure 50 lbs. at Post Office.

FIRE DEPARTMENT. Volunteer 60 men, paid by the hour when on duty. One engineer and one assistant on constant duty at engine house. No public fire alarm system. Steam whistle at light and power station sounds fire alarm signals. One horse on constant duty, two horses on call. One 24 class Metropolitan steam fire engine. One steam fire engine in reserve. One small chemical engine. 12 Underwriters chemical fire extinguishers. Five independent hose carts. 6500 ft. cotton-rubber lined hose.



### INDEX.

STREETS.		SPECIALS.	
STREET	NO.	STREET	NO.
Albert Ave.,	1-30	Alona Cottage,	8
Ash,	7	Balance Rock Cottage,	6
" Place,	9	Bangor Steamboat Wharf,	3
Atlantic Ave.,	1-11	Baptist Church,	7
" " "	2-12	Bar Harbor & Union River Pow'r Co., Plant,	7
" " "	13-30	" " Buckboard Co.,	7
Barron Court,	5	" " Coal Co.,	2
Bay View Ave.,	2	" " Hospital,	1
Brewer Ave.,	1-10	" " House,	2
" " "	11-20	" " Steam Laundry,	2
Bridge,	1-35	Belmont Hotel,	10
" " "	2-36	" " Bradley Block,	6
Cedar Ave.,	5	" " Brewer House,	1
" Lane,	7	" " Ice Co., Ice House,	9
Cottage,	1-71	Bulger Block,	9
" " "	2-62	Casino,	8
" " "	64-128	Catholic Church,	10
" " "	73-129	Clark Coal Co.,	2
" " "	130-143	Congregational Church,	4
Davis Place,	5	Davis Buckboard Co.,	7
Des Isles Ave.,	1-22	Eden,	10
Eden,	1-38	Edgewood,	7
Edgewood,	1-36	Everard Ho.,	4
First, South,	1-29	Florence Ho.,	6
" " "	2-30	Franklin Block,	6
Greely Ave.,	8	Grammar School,	5
Hancock Ave.,	1-28	Guthrie & Wilson, Carriage Repair Shop,	7
High,	4	Hamor Block,	6
Holland Ave.,	1-24	Hodgkins, A., & Son, Planing Mill,	7
" " "	25-62	Hotel Everard,	4
Kennebec Place,	4	" Porcupine,	6
Ledge Lawn Ave.,	1-48	La Rochelle Cottage,	8
" " "	49-98	Louisburg Hotel,	6
Lenox Place,	2	Lynam House,	9
Main,	1-59	Maine Central Hotel,	5
" " "	2-58	" " R. R. Wharf,	3
" " "	61-175	Malvern House,	10
" " "	90-224	Marlborough Cottage,	3
" " "	177-291	Methodist Episcopal Church,	5
" " "	226-340	Mt. Desert Block,	3
" " "	293-361	" " Reading Rooms,	3
Maple,	1-22	Music Hall,	1
		Newport House,	3
		Nickerson, Spratt & Greeley, Grist Mill,	2
		Parkers Cottage,	10
		Public Library,	5
		" School, High Street,	4
		" " School Street,	5
		Roberts, E. J., Wood,	2
		Rockaway House,	3
		Roderick House,	4
		St. Sauveur House,	9
		" Saviors' Episcopal Church,	4
		Swimming Club, The,	2
		Unitarian Church,	5
		Y. M. C. A. Building,	5

\* Indicates only one side of Street shown.