

The University of Maine

DigitalCommons@UMaine

Fisheries

Maine Environmental Collection

10-2-2020

NYSDEC Marine REsources Headquarters 11/12

New York State Department of Environmental Conservation

Follow this and additional works at: https://digitalcommons.library.umaine.edu/maine_env_fisheries

Repository Citation

of Environmental Conservation, New York State Department, "NYSDEC Marine REsources Headquarters 11/12" (2020). *Fisheries*. 11.

https://digitalcommons.library.umaine.edu/maine_env_fisheries/11

This Article is brought to you for free and open access by DigitalCommons@UMaine. It has been accepted for inclusion in Fisheries by an authorized administrator of DigitalCommons@UMaine. For more information, please contact um.library.technical.services@maine.edu.



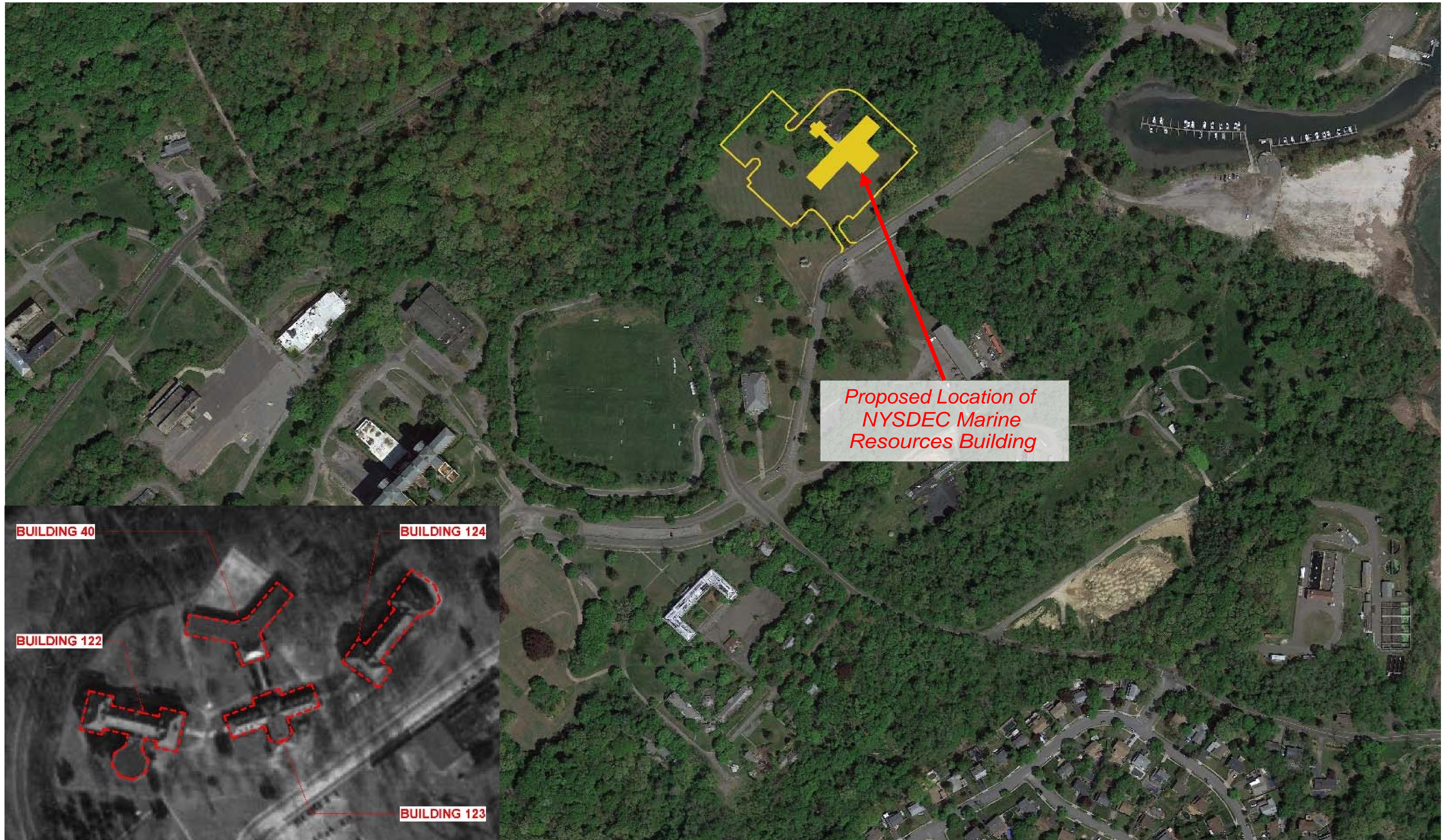
BIRD'S EYE VANTAGE POINT - TEAL METAL PANEL / WOOD SHINGLES

NYSDEC MARINE RESOURCES HEADQUARTERS

KINGS PARK, NY

11/2/2017





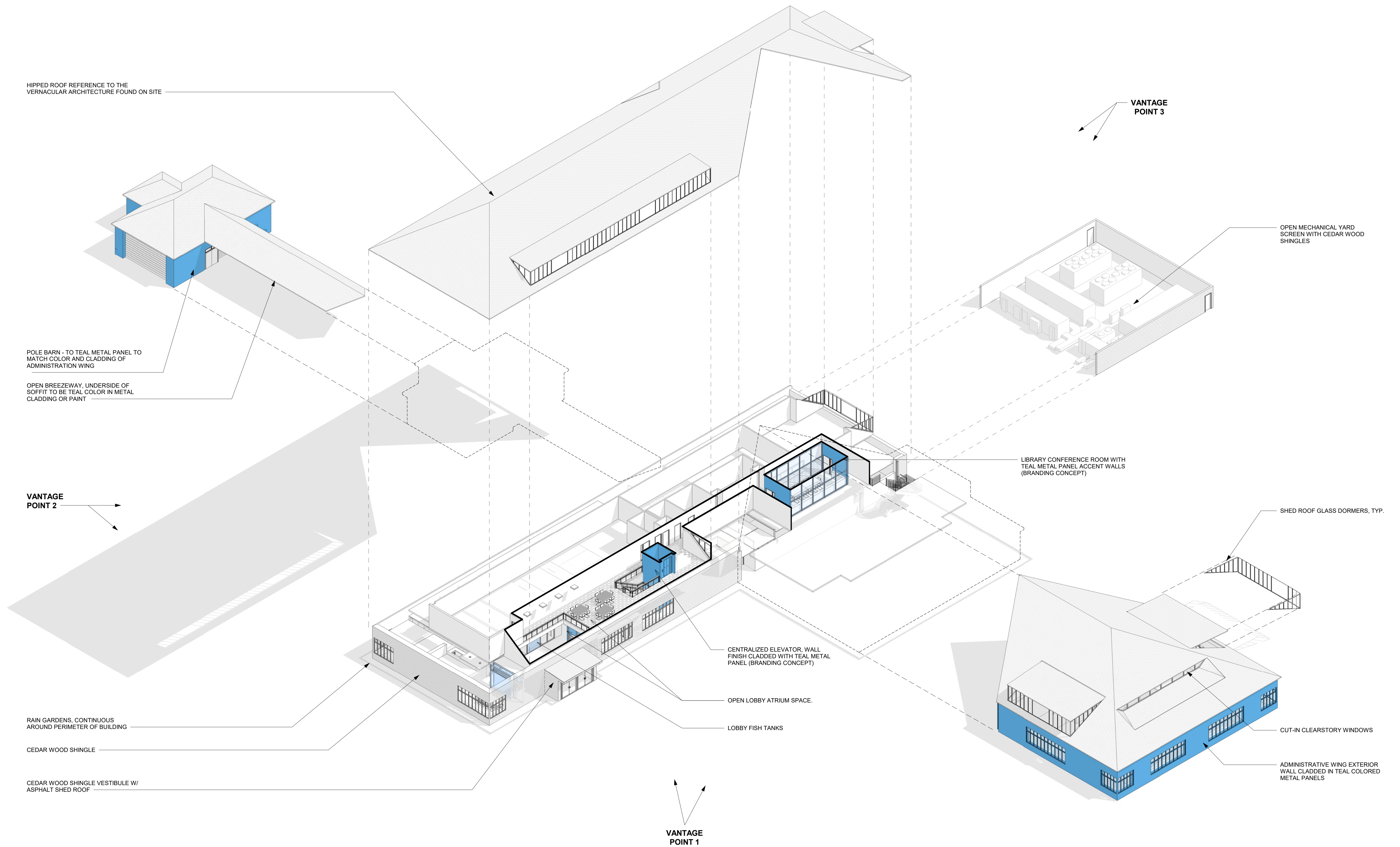
SITE PLAN

NYSDEC MARINE RESOURCES HEADQUARTERS

KINGS PARK, NY

11/2/2017





EXPLODED OBLIQUE VIEW

NYSDEC MARINE RESOURCES HEADQUARTERS

KINGS PARK, NY

11/2/2017





TRAVELING NORTHEAST ON KINGS PARK BOULEVARD

RENDERING APPROACH FROM KINGS PARK BOULEVARD

NYSDEC MARINE RESOURCES HEADQUARTERS

KINGS PARK, NY

11/2/2017

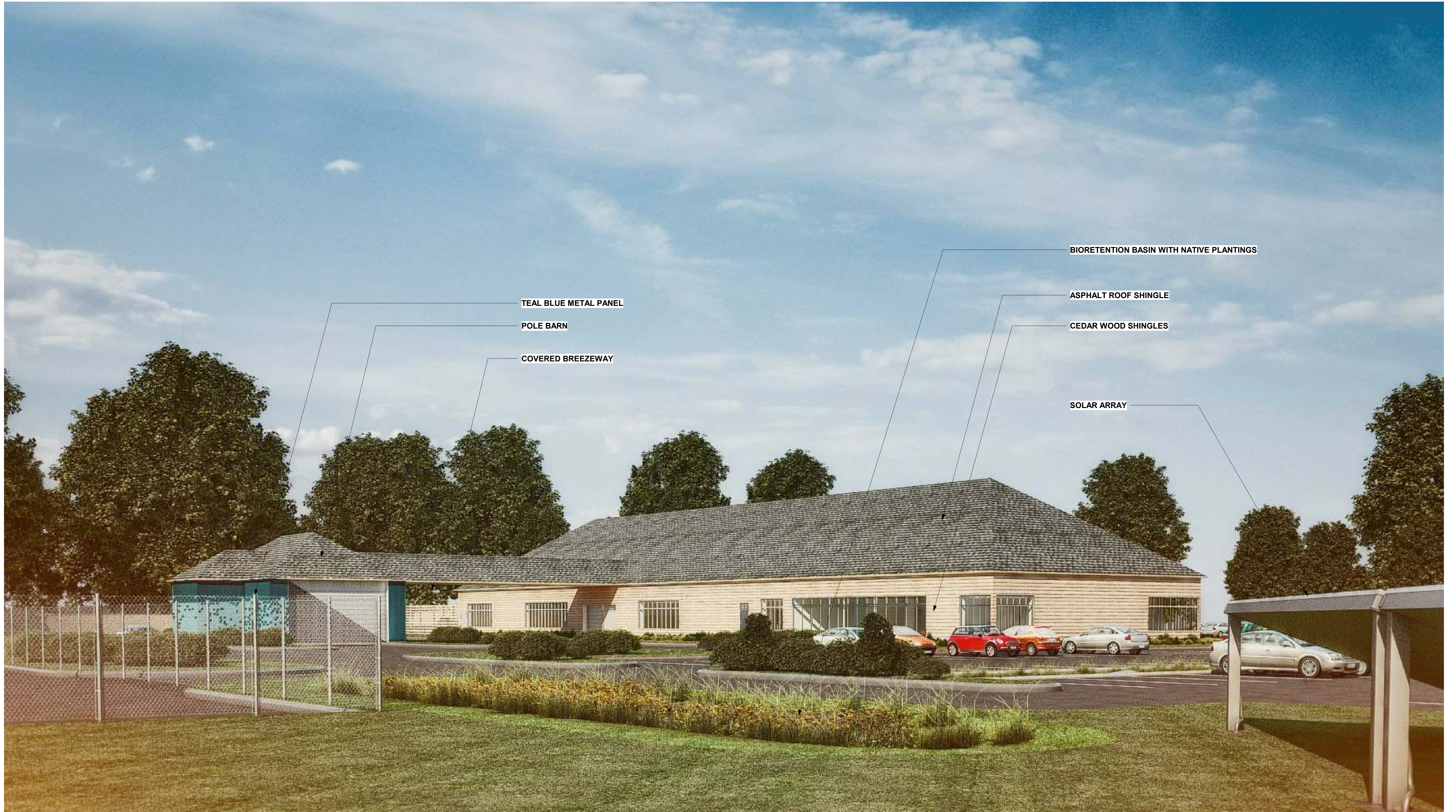


EXTERIOR VANTAGE POINT 1 - TEAL METAL PANEL / WOOD SHINGLES

NYSDEC MARINE RESOURCES HEADQUARTERS

KINGS PARK, NY

11/2/2017



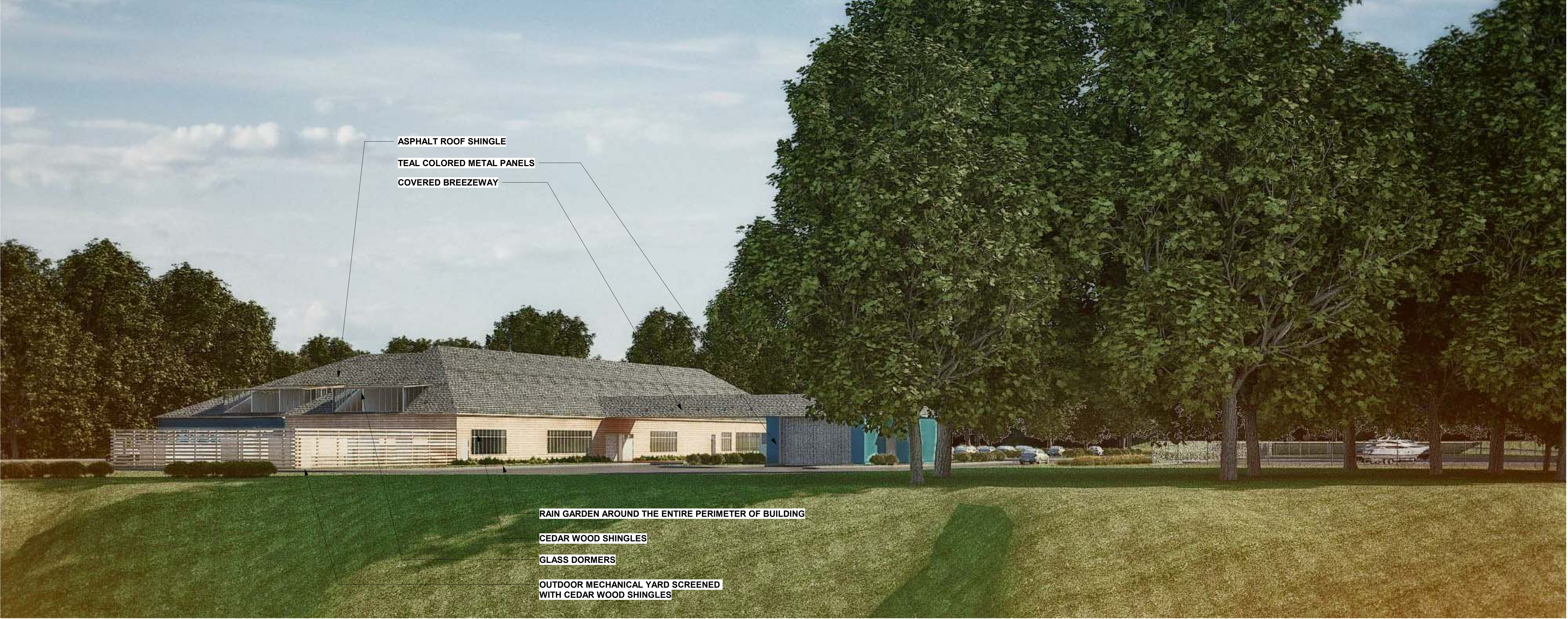
EXTERIOR VANTAGE POINT 2 - TEAL METAL PANEL / WOOD SHINGLES

NYSDEC MARINE RESOURCES HEADQUARTERS

KINGS PARK, NY

11/2/2017





EXTERIOR VANTAGE POINT 3 - TEAL METAL PANEL / WOOD SHINGLES

NYSDEC MARINE RESOURCES HEADQUARTERS

KINGS PARK, NY

11/2/2017



INTERIOR RENDERINGS

NYSDEC MARINE RESOURCES HEADQUARTERS

KINGS PARK, NY

11/2/2017





EXTERIOR NIGHT RENDERING - CLOSING REMARKS

NYSDEC MARINE RESOURCES HEADQUARTERS

KINGS PARK, NY

11/2/2017





BOAT SLIPS	
NUMBER OF SLIPS	SLIP SIZE
103	20' x 9' wide
26	30' x 13'-6" wide Powerboats
22	30' x 11'-6" wide Sailboats
151 Total	