

The University of Maine

DigitalCommons@UMaine

Advanced Manufacturing Center

University of Maine Departmental Records

4-3-2020

Advanced Manufacturing Center_Aerosol Box_Negative Pressure Designs

Forest Wentworth

Follow this and additional works at: https://digitalcommons.library.umaine.edu/c19_amc

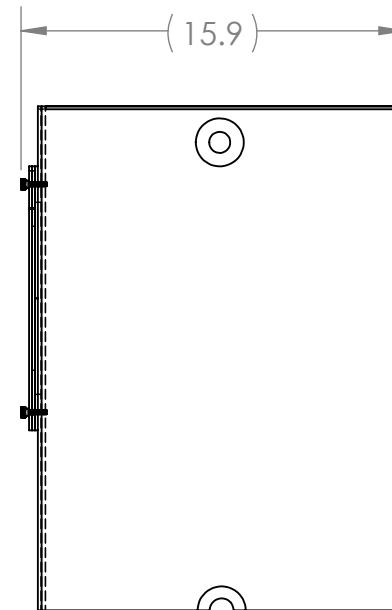
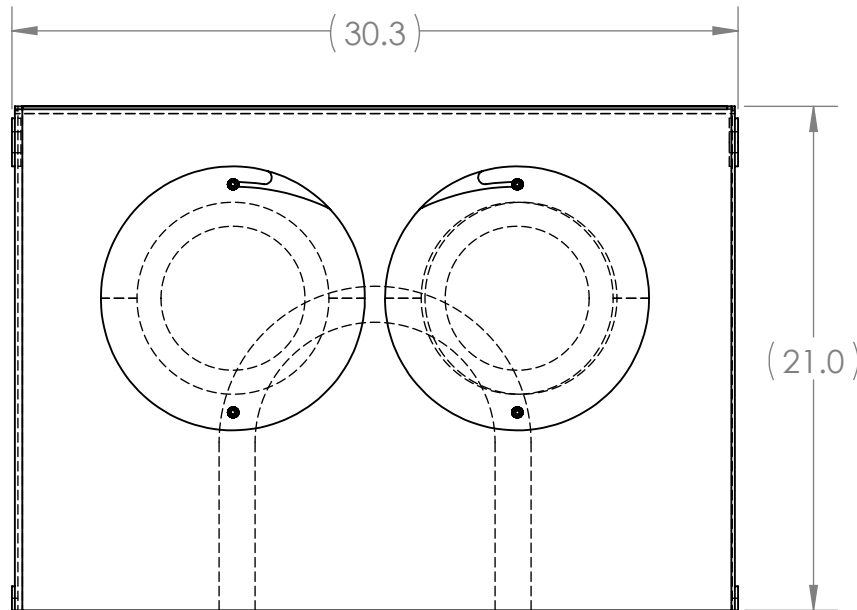
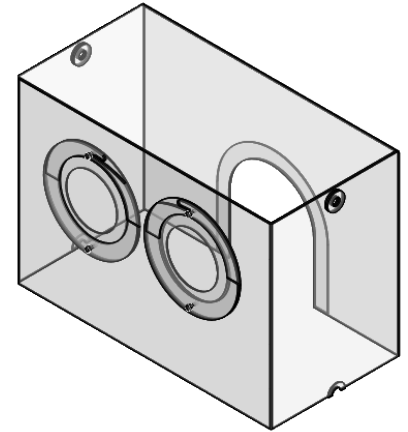


Part of the [Engineering Commons](#), [Higher Education Commons](#), [History Commons](#), and the [Medicine and Health Sciences Commons](#)

This Image is brought to you for free and open access by DigitalCommons@UMaine. It has been accepted for inclusion in Advanced Manufacturing Center by an authorized administrator of DigitalCommons@UMaine. For more information, please contact um.library.technical.services@maine.edu.

Notes:

1. Clean & Degrease
2. Break Sharp Edges
3. Verify All Dimension On Print



PROPRIETARY AND CONFIDENTIAL

THE INFORMATION CONTAINED IN THIS DRAWING IS THE SOLE PROPERTY OF THE AMC AND RESPECTIVE CLIENT. ANY REPRODUCTION IN PART OR AS A WHOLE WITHOUT THE WRITTEN PERMISSION OF THE AMC OR CLIENT IS PROHIBITED.

DIMENSIONS ARE IN INCHES
 TOLERANCES:
 ANGLES: $\pm 1^\circ$ WHOLE: $\pm .125$
 1PL ± 0.05 2PL ± 0.01
 3PL ± 0.005 4PL ± 0.0005
 MATERIAL:
 HARDNESS:
 FINISH:

	NAME	DATE
DRAWN	Forest Wentworth	4/3/2020
CHECKED		
ENG APPR.		

COMMENTS:

PROJECT #: **4454-01**

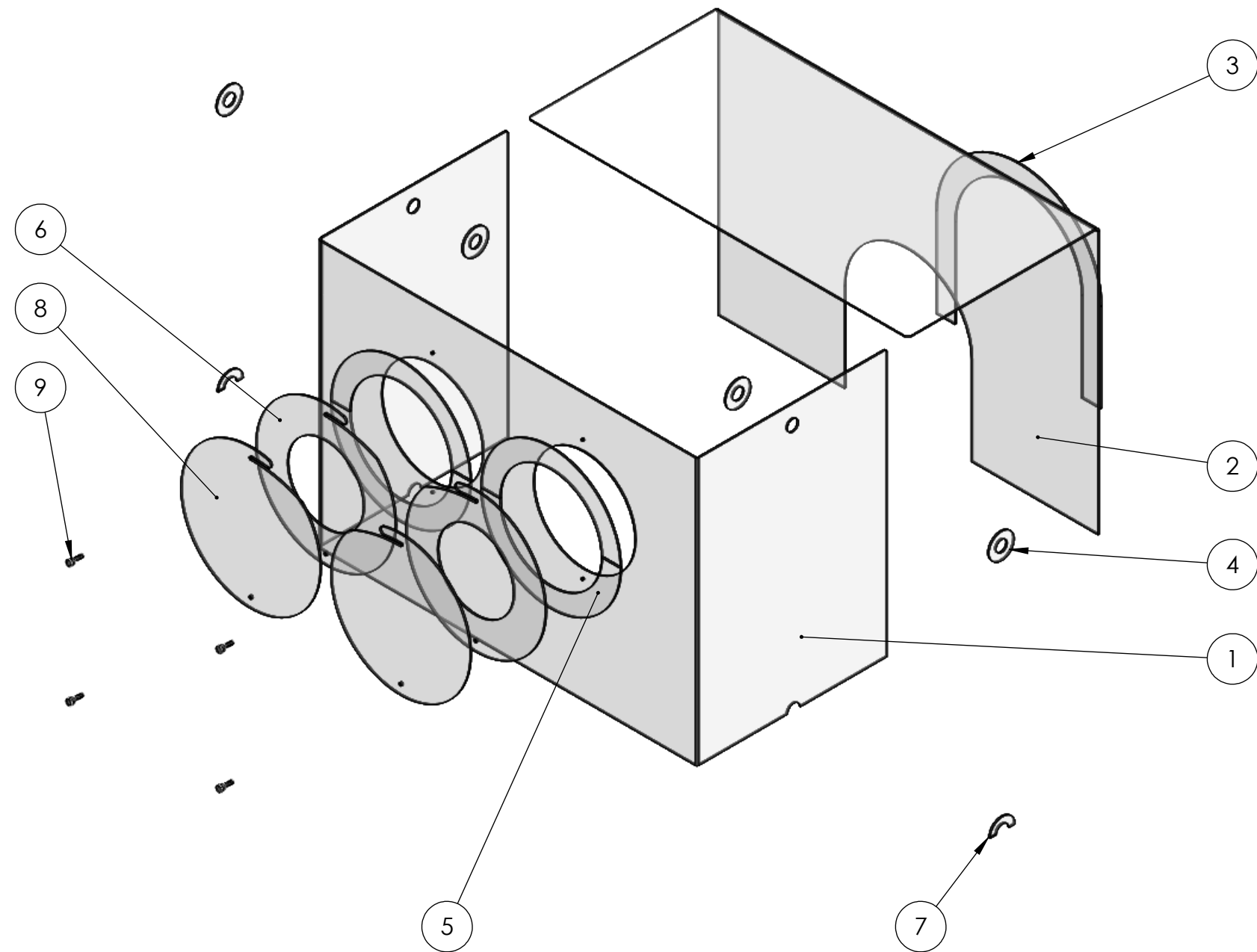


University Of Maine

Advanced Manufacturing Center

DESCRIPTION: Negative Pressure Chamber		
SIZE A	PART NUMBER: Negative Pressure Chamber NL Rev	REV 0
SCALE: 1:8	WEIGHT: 13.371 lb	SHEET 1 OF 10

- NOTE:
 1. Clean & Degrease
 2. Break Sharp Edges
 3. Verify All Dimensions On Print




ITEM NO.	PART NUMBER	Description	
1	Arm Hole Panel	Arm Hole Panel	1
2	Neck Slot Panel	NPC Neck Slot Panel	1
3	Neck Slot Support Ring	Neck Support Ring	1
4	22mm Hole Support Ring	22mm Hole Support Ring	4
5	Arm Hole Support Rings	Arm Hole Support Rings	4
6	Arm Hole Adapter Ring 8-6	Arm Hole Adapter Ring 8in to 6in DIA	2
7	IV Notch Support Ring	22mm Hole Support Ring	2
8	Arm Hole Block Off	Arm Hole Block Off	2
9	90462A520	10-32 x 3/4 Nylon Thumb Screew	4

PROPRIETARY AND CONFIDENTIAL
 THE INFORMATION CONTAINED IN THIS DRAWING IS THE SOLE PROPERTY OF THE AMC AND RESPECTIVE CLIENT. ANY REPRODUCTION IN PART OR AS A WHOLE WITHOUT THE WRITTEN PERMISSION OF THE AMC OR CLIENT IS PROHIBITED.

DIMENSIONS ARE IN INCHES
 TOLERANCES:
 ANGLES: ± 1° WHOLE: ± .125
 1PL ±0.05 2PL ±0.01
 3PL ±0.005 4PL ±0.0005
 MATERIAL:
 HARDNESS:
 FINISH:

	NAME	DATE
DRAWN	Forest Wentworth	4/3/2020
CHECKED		
ENG APPR.		

COMMENTS:
 PROJECT #: 4454-01


AMC
 THE UNIVERSITY OF MAINE
 COLLEGE OF ENGINEERING

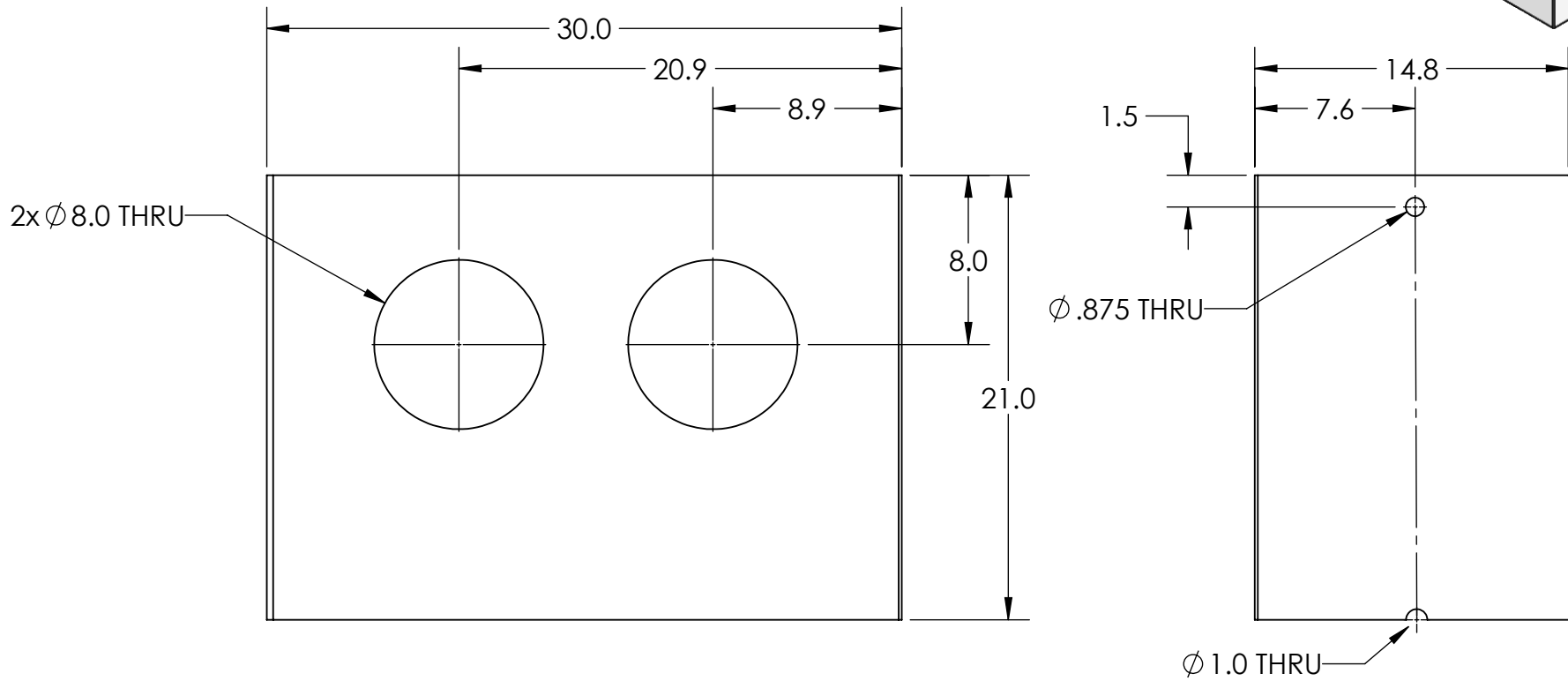
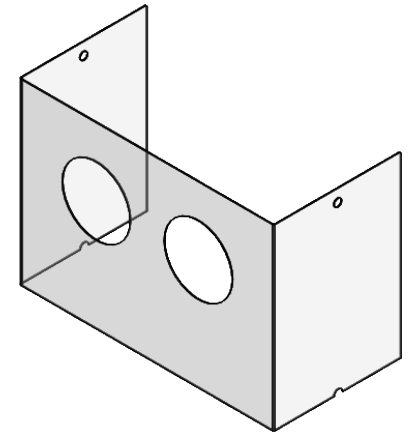
University Of Maine
 Advanced
 Manufacturing
 Center

DESCRIPTION: Negative Pressure Chamber
 SCALE: 1:8 WEIGHT: 13.371 lb SHEET 2 OF 10

SIZE	PART NUMBER: Negative Pressure Chamber NL Rev	REV
B		0

Notes:

1. Clean & Degrease
2. Break Sharp Edges
3. Verify All Dimension On Print



PROPRIETARY AND CONFIDENTIAL
 THE INFORMATION CONTAINED IN THIS DRAWING IS THE SOLE PROPERTY OF THE AMC AND RESPECTIVE CLIENT. ANY REPRODUCTION IN PART OR AS A WHOLE WITHOUT THE WRITTEN PERMISSION OF THE AMC OR CLIENT IS PROHIBITED.

DIMENSIONS ARE IN INCHES
 TOLERANCES:
 ANGLES: $\pm 1^\circ$ WHOLE: $\pm .125$
 1PL ± 0.05 2PL ± 0.01
 3PL ± 0.005 4PL ± 0.0005
 MATERIAL:
 HARDNESS:
 FINISH:

	NAME	DATE
DRAWN	Forest Wentworth	4/3/2020
CHECKED		
ENG APPR.		
COMMENTS:		
PROJECT #: 4454-01		

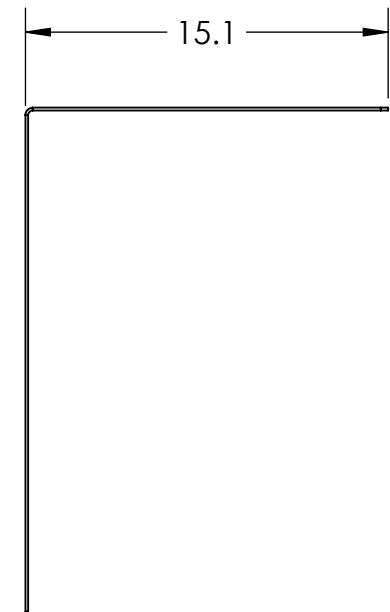
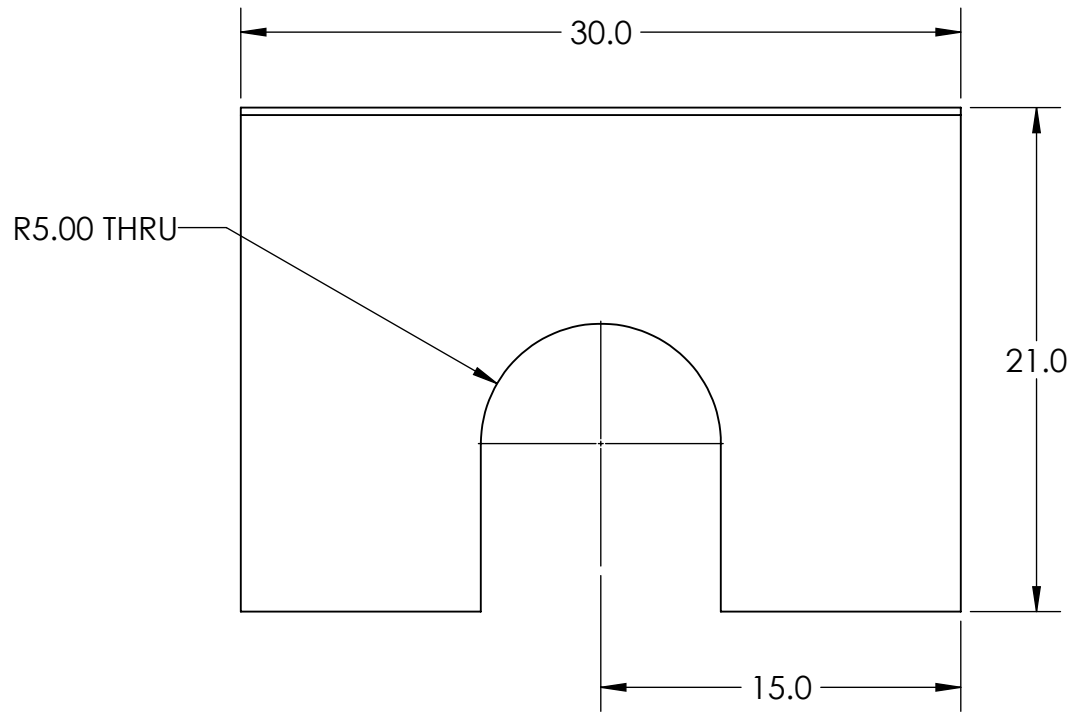
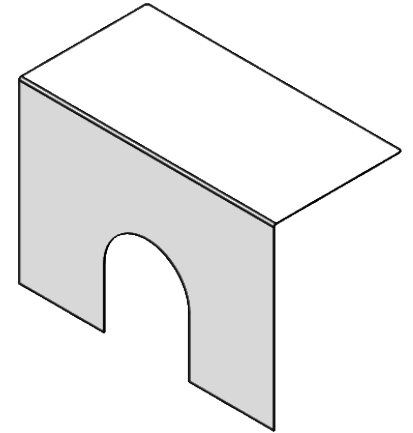


University Of Maine
 Advanced Manufacturing Center

DESCRIPTION: Negative Pressure Chamber		
SIZE A	PART NUMBER: Negative Pressure Chamber NL Rev	REV 0
SCALE: 1:8	WEIGHT: 13.371 lb	SHEET 3 OF 10

Notes:

1. Clean & Degrease
2. Break Sharp Edges
3. Verify All Dimension On Print



PROPRIETARY AND CONFIDENTIAL
 THE INFORMATION CONTAINED IN THIS DRAWING IS THE SOLE PROPERTY OF THE AMC AND RESPECTIVE CLIENT. ANY REPRODUCTION IN PART OR AS A WHOLE WITHOUT THE WRITTEN PERMISSION OF THE AMC OR CLIENT IS PROHIBITED.

DIMENSIONS ARE IN INCHES	
TOLERANCES:	
ANGLES: $\pm 1^\circ$ WHOLE: $\pm .125$	
1PL ± 0.05	2PL ± 0.01
3PL ± 0.005	4PL ± 0.0005
MATERIAL:	Acrylic (Medium-high impact)
HARDNESS:	N/A
FINISH:	N/A

	NAME	DATE
DRAWN	Forest Wentworth	4/3/2020
CHECKED		
ENG APPR.		

COMMENTS: .125in Thick Acrylic or Polycarbonate
 PROJECT #: **4454-01**

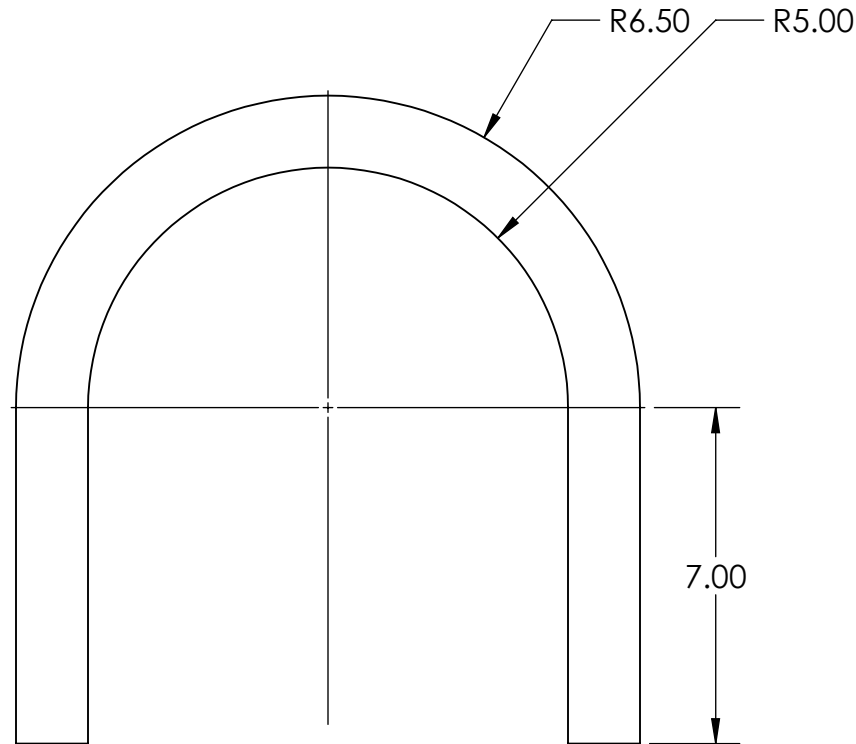
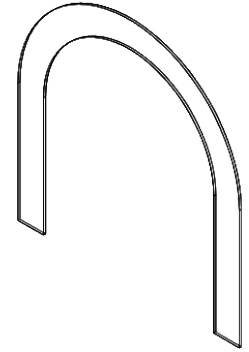


University Of Maine
 Advanced Manufacturing Center

DESCRIPTION: NPC Neck Slot Panel	
SIZE	REV
A	0
PART NUMBER: Neck Slot Panel	
SCALE: 1:8	WEIGHT: 4.949 lb
SHEET 4 OF 10	

Notes:

1. Clean & Degrease
2. Break Sharp Edges
3. Verify All Dimension On Print



PROPRIETARY AND CONFIDENTIAL
 THE INFORMATION CONTAINED IN THIS DRAWING IS THE SOLE PROPERTY OF THE AMC AND RESPECTIVE CLIENT. ANY REPRODUCTION IN PART OR AS A WHOLE WITHOUT THE WRITTEN PERMISSION OF THE AMC OR CLIENT IS PROHIBITED.

DIMENSIONS ARE IN INCHES	
TOLERANCES:	
ANGLES: $\pm 1^\circ$ WHOLE: $\pm .125$	
1PL ± 0.05	2PL ± 0.01
3PL ± 0.005	4PL ± 0.0005
MATERIAL:	Acrylic (Medium-high impact)
HARDNESS:	N/A
FINISH:	N/A

	NAME	DATE
DRAWN	Forest Wentworth	
CHECKED		
ENG APPR.		

COMMENTS: .125in Thick Acrylic or Polycarbonate
 PROJECT #: **4454-01**

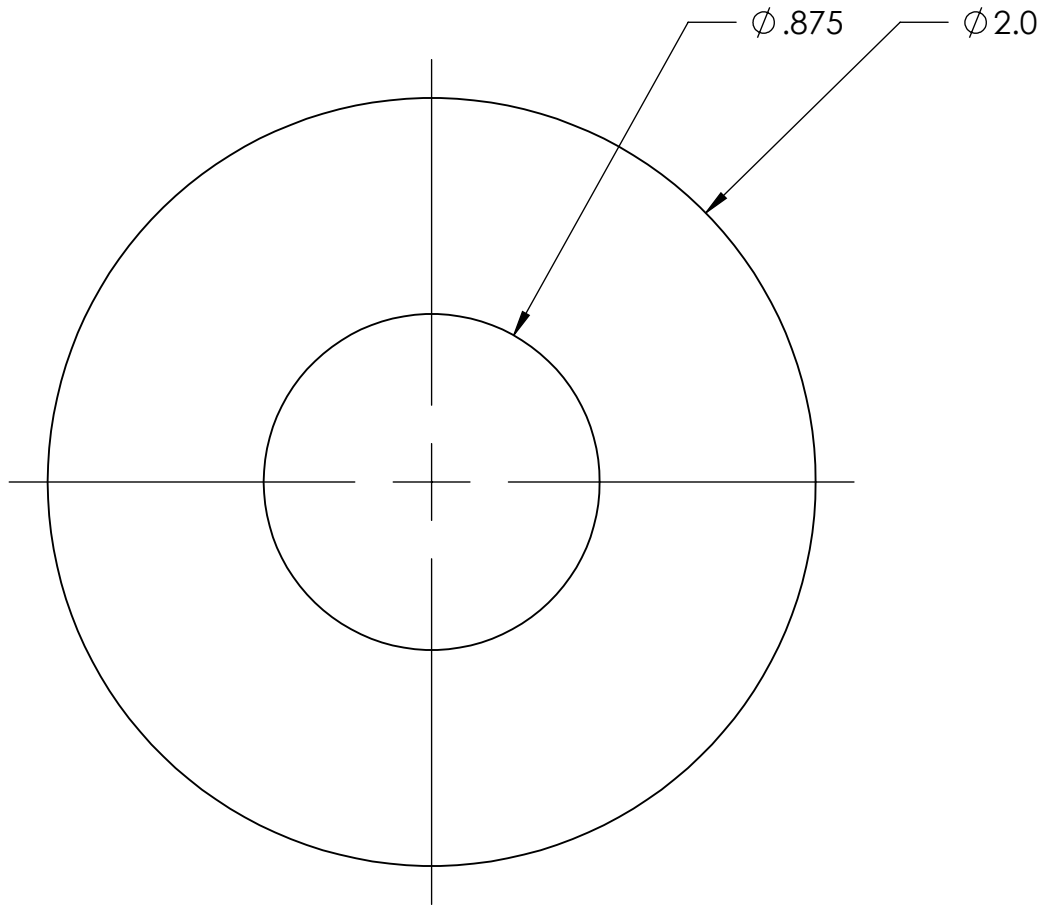
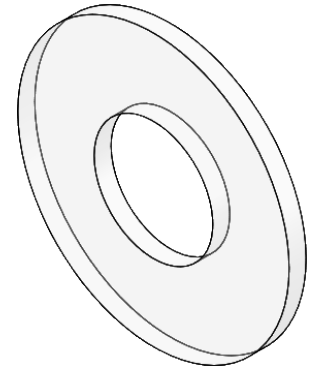


University Of Maine
 Advanced Manufacturing Center

DESCRIPTION: Neck Support Ring	
SIZE A	REV 0
PART NUMBER: Neck Slot Support Ring	
SCALE: 1:8	WEIGHT: 0.261 lb
SHEET 5 OF 10	

Notes:

1. Clean & Degrease
2. Break Sharp Edges
3. Verify All Dimension On Print



PROPRIETARY AND CONFIDENTIAL
 THE INFORMATION CONTAINED IN THIS DRAWING IS THE SOLE PROPERTY OF THE AMC AND RESPECTIVE CLIENT. ANY REPRODUCTION IN PART OR AS A WHOLE WITHOUT THE WRITTEN PERMISSION OF THE AMC OR CLIENT IS PROHIBITED.

DIMENSIONS ARE IN INCHES	
TOLERANCES:	
ANGLES: $\pm 1^\circ$ WHOLE: $\pm .125$	
1PL ± 0.05	2PL ± 0.01
3PL ± 0.005	4PL ± 0.0005
MATERIAL:	Acrylic (Medium-high impact)
HARDNESS:	N/A
FINISH:	N/A

	NAME	DATE
DRAWN	Forest Wentworth	
CHECKED		
ENG APPR.		
COMMENTS: .125in Thick Acrylic or Polycarbonate		
PROJECT #: 4454-01		

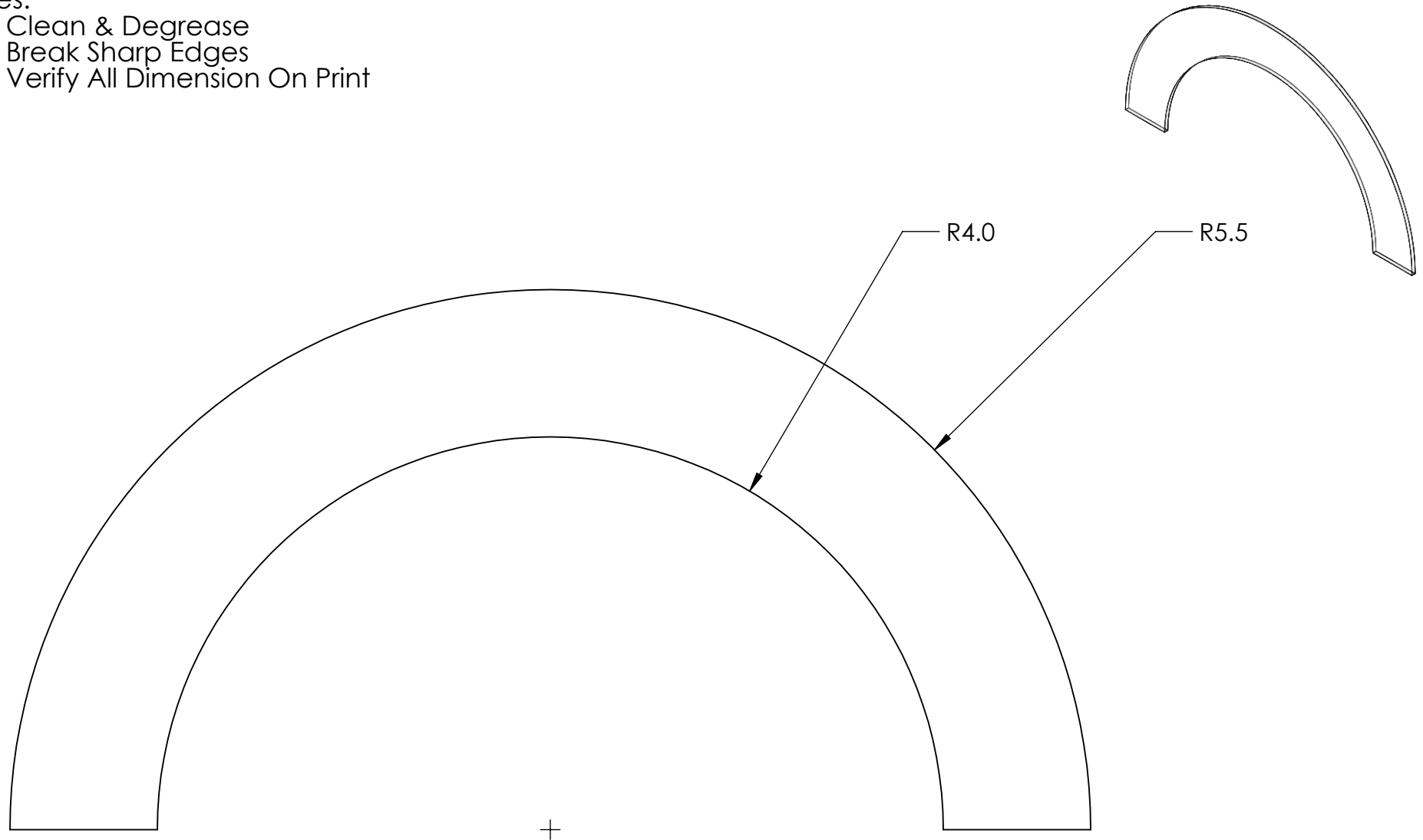


University Of Maine
Advanced Manufacturing Center

DESCRIPTION: 22mm Hole Support Ring		
SIZE	PART NUMBER: 22mm Hole Support Ring	REV
A		0
SCALE: 1:8	WEIGHT: 0.014 lb	SHEET 6 OF 10

Notes:

1. Clean & Degrease
2. Break Sharp Edges
3. Verify All Dimension On Print



PROPRIETARY AND CONFIDENTIAL
 THE INFORMATION CONTAINED IN THIS DRAWING IS THE SOLE PROPERTY OF THE AMC AND RESPECTIVE CLIENT. ANY REPRODUCTION IN PART OR AS A WHOLE WITHOUT THE WRITTEN PERMISSION OF THE AMC OR CLIENT IS PROHIBITED.

DIMENSIONS ARE IN INCHES	
TOLERANCES:	
ANGLES: $\pm 1^\circ$ WHOLE: $\pm .125$	
1PL ± 0.05	2PL ± 0.01
3PL ± 0.005	4PL ± 0.0005
MATERIAL:	Acrylic (Medium-high impact)
HARDNESS:	N/A
FINISH:	N/A

	NAME	DATE
DRAWN	Forest Wentworth	4/3/2020
CHECKED		
ENG APPR.		
COMMENTS: .125in Thick Acrylic or Polycarbonate		
PROJECT #: 4454-01		

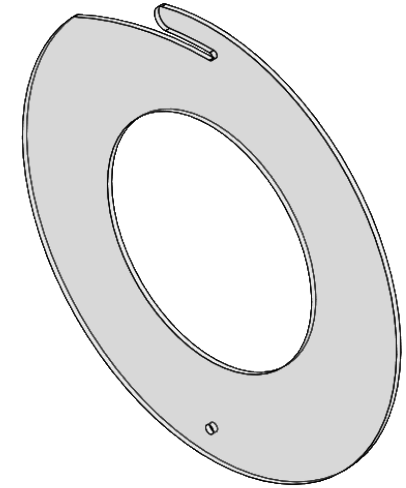
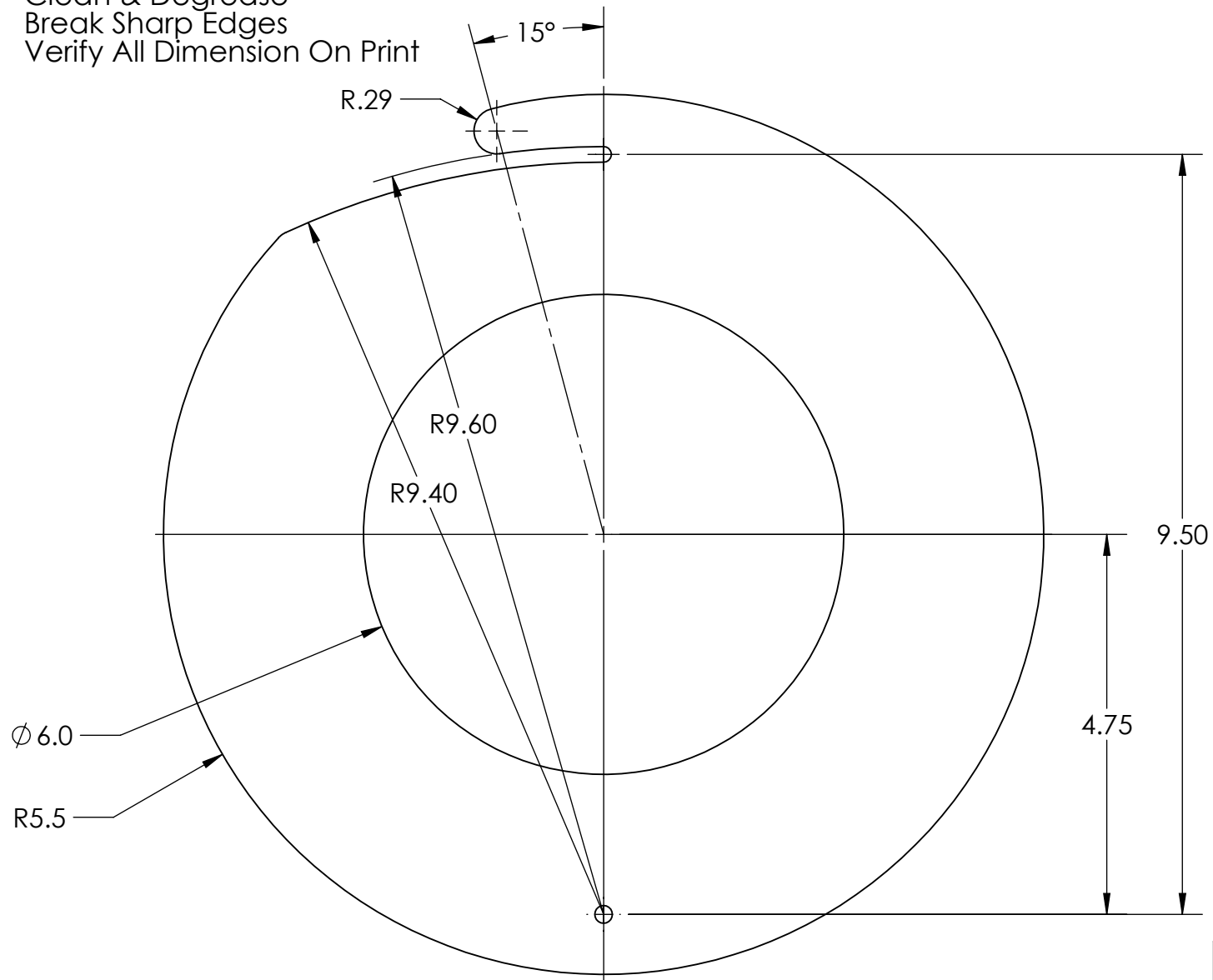


University Of Maine
 Advanced Manufacturing Center

DESCRIPTION: Arm Hole Support Rings	
SIZE A	REV 0
PART NUMBER: Arm Hole Support Rings	
SCALE: 1:8	WEIGHT: 0.121 lb
SHEET 7 OF 10	

Notes:

1. Clean & Degrease
2. Break Sharp Edges
3. Verify All Dimension On Print



PROPRIETARY AND CONFIDENTIAL

THE INFORMATION CONTAINED IN THIS DRAWING IS THE SOLE PROPERTY OF THE AMC AND RESPECTIVE CLIENT. ANY REPRODUCTION IN PART OR AS A WHOLE WITHOUT THE WRITTEN PERMISSION OF THE AMC OR CLIENT IS PROHIBITED.

DIMENSIONS ARE IN INCHES	
TOLERANCES:	
ANGLES: $\pm 1^\circ$ WHOLE: $\pm .125$	
1PL ± 0.05	2PL ± 0.01
3PL ± 0.005	4PL ± 0.0005
MATERIAL:	Acrylic (Medium-high impact)
HARDNESS:	N/A
FINISH:	N/A

	NAME	DATE
DRAWN	Forest Wentworth	4/3/2020
CHECKED		
ENG APPR.		

COMMENTS: .125in Thick Acrylic or Polycarbonate

PROJECT #: **4454-01**



University Of Maine

Advanced Manufacturing Center

DESCRIPTION: Arm Hole Adapter Ring 8in to 6in DIA

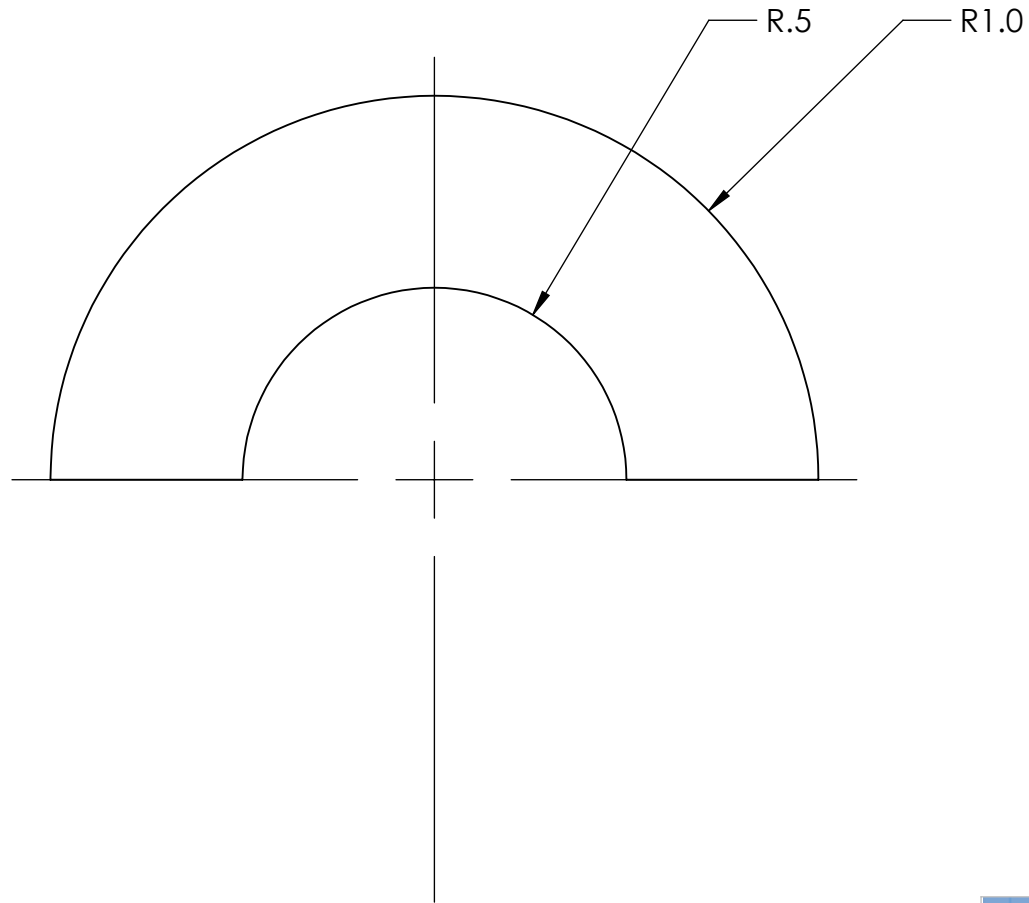
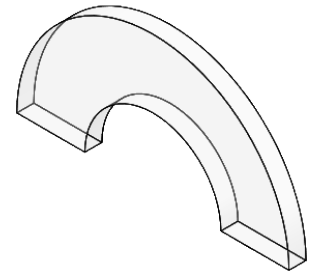
SIZE	PART NUMBER: Arm Hole Adapter Ring 8-6	REV
A		0

SCALE: 1:8 WEIGHT: 0.354 lb

SHEET 8 OF 10

Notes:

1. Clean & Degrease
2. Break Sharp Edges
3. Verify All Dimension On Print



PROPRIETARY AND CONFIDENTIAL
 THE INFORMATION CONTAINED IN THIS DRAWING IS THE SOLE PROPERTY OF THE AMC AND RESPECTIVE CLIENT. ANY REPRODUCTION IN PART OR AS A WHOLE WITHOUT THE WRITTEN PERMISSION OF THE AMC OR CLIENT IS PROHIBITED.

DIMENSIONS ARE IN INCHES	
TOLERANCES:	
ANGLES: $\pm 1^\circ$ WHOLE: $\pm .125$	
1PL ± 0.05	2PL ± 0.01
3PL ± 0.005	4PL ± 0.0005
MATERIAL:	Acrylic (Medium-high impact)
HARDNESS:	N/A
FINISH:	N/A

	NAME	DATE
DRAWN	Forest Wentworth	4/3/2020
CHECKED		
ENG APPR.		

COMMENTS: .125in Thick Acrylic or Polycarbonate

PROJECT #: **4454-01**



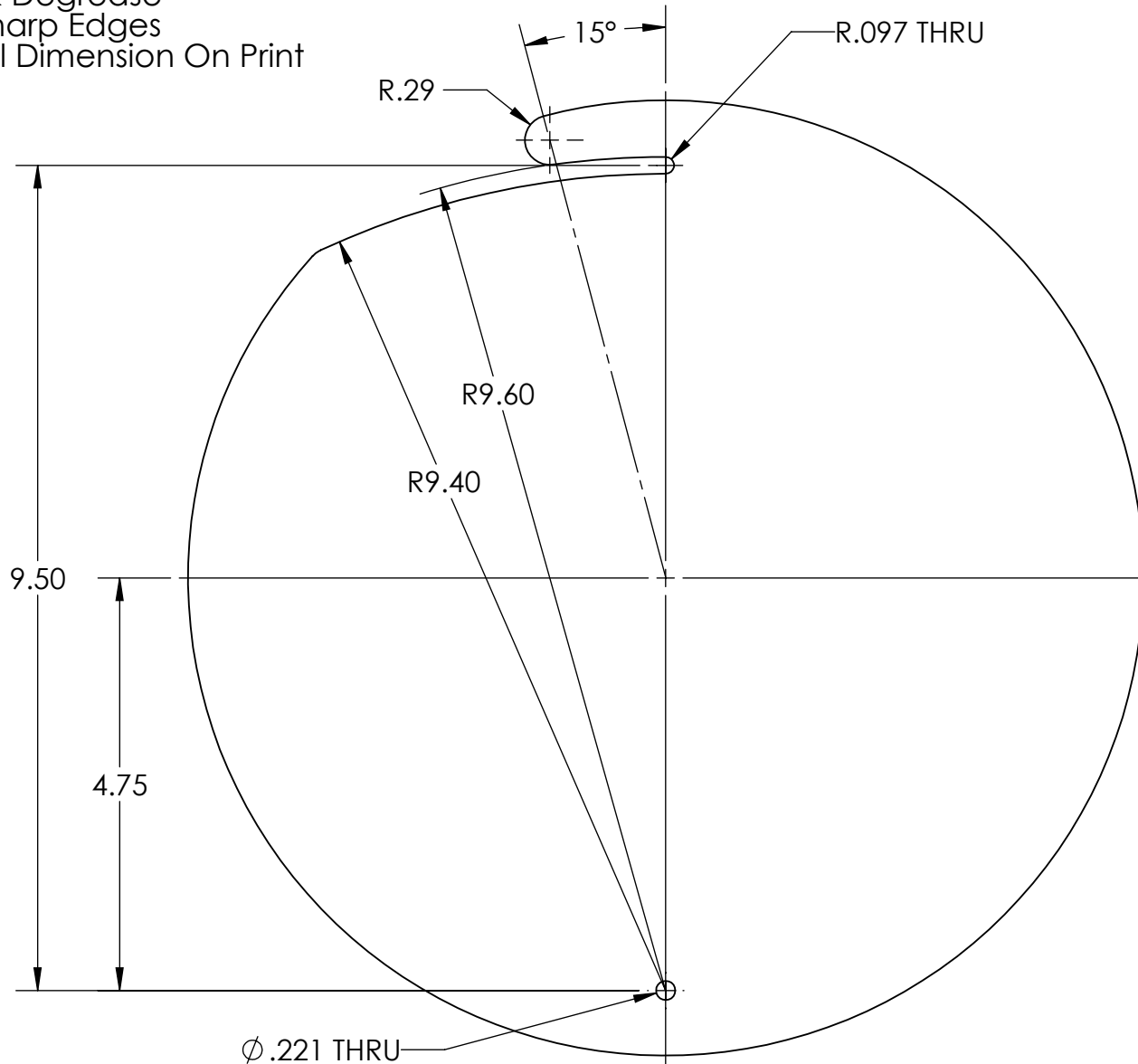
University Of Maine

Advanced Manufacturing Center

DESCRIPTION: 22mm Hole Support Ring	
SIZE	REV
A	0
PART NUMBER: IV Notch Support Ring	
SCALE: 1:8	WEIGHT: 0.006 lb
SHEET 9 OF 10	

Notes:

1. Clean & Degrease
2. Break Sharp Edges
3. Verify All Dimension On Print



PROPRIETARY AND CONFIDENTIAL
 THE INFORMATION CONTAINED IN THIS DRAWING IS THE SOLE PROPERTY OF THE AMC AND RESPECTIVE CLIENT. ANY REPRODUCTION IN PART OR AS A WHOLE WITHOUT THE WRITTEN PERMISSION OF THE AMC OR CLIENT IS PROHIBITED.

DIMENSIONS ARE IN INCHES	
TOLERANCES:	
ANGLES: $\pm 1^\circ$ WHOLE: $\pm .125$	
1PL ± 0.05	2PL ± 0.01
3PL ± 0.005	4PL ± 0.0005
MATERIAL:	Acrylic (Medium-high impact)
HARDNESS:	N/A
FINISH:	N/A

	NAME	DATE
DRAWN	Forest Wentworth	4/3/2020
CHECKED		
ENG APPR.		

COMMENTS: .125in Thick Acrylic or Polycarbonate

PROJECT #: **4454-01**



University Of Maine

Advanced Manufacturing Center

DESCRIPTION: Arm Hole Block Off	
SIZE	REV
A	0
PART NUMBER: Arm Hole Block Off	
SCALE: 1:8	WEIGHT: 0.507 lb
SHEET 10 OF 10	