

"Zero" had been taught the art of climbing a telegraph pole, while "Flab" had made a start in electrical measurements, by attempting to make connections with a live trolley-line. Naturally enough the rest of us envied our more learned members, but we are no longer jealous, for we have reached that stage in our study where we realize that a knowledge of telegraph poles and trolley wires does not compose a very large portion of the Electrical Engineering course. During the first year we spent our time as do other Freshmen, studying Rhetoric, Trigonometry, Chemistry and the like.

At the beginning of the second year, we were harnessed with the plodding mechanics to spend our days making shavings and pounding iron. Our study hours were employed in plugging, Analytical and Descriptive Geometry, together with advanced French. Many a brain-wearied Soph. tossed on his pillow, dreaming of the hardships of the Junior and Senior years. The dreams were rendered very realistic by echoes from '98 and '99, telling tales of woe caused by Mr. Lanphear. Happy are we to relate, that like all dreams they were fictitious, as that worthy instructor has gone to Cornell.

Now we are Juniors and have begun to realize what we are here for. We have spent a few fruitful hours under Mr. Dorsey, taking measurements with delicate galvanometers, which require the application of a mallet in order that the needle shall move. Last term, Mr. Dickerson enlightened us on the mysteries of Electricity and Magnetism and is now teaching us the principles of the Dynamo. In the study of the Dynamo we have a great advantage over previous classes, in having among our numbers a few specials who are a great source of aid to our instructor in his efforts to teach the four-year men.

In our Senior year we hope to eclipse the attempts of our predecessors in Dynamo design, Electrical machinery, Alternating Currents and Bedell's Transformers. At all events we may hope to learn with Little "Eddie" how to draw a "TRANSFORMER."





# THE UNIVERSITY OF MAINE ATHLETIC ASSOCIATION, 1898-99.

---

## Officers.

*President*, WILLIAM B. MORELL.

*Vice President*, ARCHER L. GROVER.

*Secretary*, J. ARTHUR HAYES.

*Treasurer*, J. WILSON BROWN.

## Executive Committee.

*For the Faculty.*

RALPH K. JONES,

ARTHUR R. CRATHORNE.

*For the Alumni.*

W. R. HOWARD, '82,

E. H. KELLEY, '90,

J. F. GOULD, '82.

*For the Undergraduates.*

PRESIDENT WILLIAM B. MORELL, *Chairman.*

C. A. BLACKWELL, Q. T. V.,

A. L. BIRD, B Θ II,

G. H. DAVIS, K Σ,

R. G. WORMELL, A T Ω,

A. L. GROVER, Φ K E,

A. S. PAGE, Δ P,

J. E. FRENCH, I Φ,

E. P. BASSETT,

E. M. TATE,

W. A. ARMES,

J. W. BROWN.

# MAINE INTERCOLLEGIATE BASE-BALL ASSOCIATION.

---

Bates, Bowdoin, Colby, University of Maine.

---

*President*, A. C. WHEELER, Bates.

*Secretary*, J. W. WHITNEY, Bowdoin.

*Treasurer*, M. B. DOWNING, University of Maine.

---

## SCHEDULE.

BOWDOIN <i>vs.</i> UNIVERSITY OF MAINE, . . . . .	Orono, May 6th.
BOWDOIN <i>vs.</i> UNIVERSITY OF MAINE, . . . . .	Brunswick, May 13th.
BATES <i>vs.</i> COLBY, . . . . .	Lewiston, May 13th.
BATES <i>vs.</i> UNIVERSITY OF MAINE, . . . . .	Lewiston, May 20th.
BATES <i>vs.</i> UNIVERSITY OF MAINE, . . . . .	Orono, May 24th.
BOWDOIN <i>vs.</i> COLBY, . . . . .	Waterville, May 24th.
COLBY <i>vs.</i> UNIVERSITY OF MAINE, . . . . .	Waterville, May 27th.
BATES <i>vs.</i> BOWDOIN, . . . . .	Brunswick, May 30th.
COLBY <i>vs.</i> UNIVERSITY OF MAINE, . . . . .	Orono, May 31st.
BATES <i>vs.</i> BOWDOIN, . . . . .	Lewiston, June 7th.
BOWDOIN <i>vs.</i> COLBY, . . . . .	Brunswick, June 10th.
BATES <i>vs.</i> COLBY, . . . . .	Waterville, June 14th.





## 'VARSITY BASE-BALL TEAM

1898.

R. P. STEVENS, . . . . . *Manager.*  
A. L. BIRD, . . . . . *Scorer.*

W. C. CLARK, 1900, . . . . .	<i>Catcher.</i>
H. B. CUSHMAN, 1900, . . . . .	<i>Pitcher.</i>
C. W. CROCKETT, '99, . . . . .	<i>Pitcher and Right Field.</i>
A. C. SMALL, '98, . . . . .	<i>First Base.</i>
A. P. SPRAGUE, '98, . . . . .	<i>Second Base.</i>
H. J. PRETTO, '99, . . . . .	<i>Short Stop.</i>
WALTER DOLLEY, '98, <i>Captain,</i> . . . . .	<i>Third Base.</i>
E. E. PALMER, '99, . . . . .	<i>Left Field.</i>
L. J. BRANN, '98, . . . . .	<i>Centre Field.</i>
W. E. WELCH, '98, . . . . .	<i>Right Field.</i>
I. H. DREW, '99, . . . . .	<i>Substitute.</i>

### Games Played in 1898.

UNIVERSITY OF MAINE, 23;	COBURN CLASSICAL INSTITUTE, 9;	April 23.
UNIVERSITY OF MAINE, 19;	AUGUSTA, 7;	April 28.
UNIVERSITY OF MAINE, 8;	BOWDOIN, 9;	May 7.
UNIVERSITY OF MAINE, 11;	BOSTON COLLEGE, 4;	May 13.
UNIVERSITY OF MAINE, 13;	BATES, 6;	May 14.
UNIVERSITY OF MAINE, 5;	BOSTON COLLEGE, 4;	May 17.
UNIVERSITY OF MAINE, 8;	MASSACHUSETTS STATE COLLEGE, 7;	May 18.
UNIVERSITY OF MAINE, 1;	HOLY CROSS, 7;	May 19.
UNIVERSITY OF MAINE, 11;	BATES, 3;	May 21.
UNIVERSITY OF MAINE, 7;	COLBY, 13;	May 28.
UNIVERSITY OF MAINE, 4;	COBURN CLASSICAL INSTITUTE, 3;	June 1.
UNIVERSITY OF MAINE, 5;	BOWDOIN, 1;	June 4.
UNIVERSITY OF MAINE, 8;	COLBY, 11;	June 8.







## CLASS BASE-BALL TEAMS.

---

'99.

PALMER, . . . . . <i>Catcher.</i>	PRETTO, . . . . . <i>Short Stop.</i>
CROCKETT, <i>Captain,</i> . . . <i>Pitcher.</i>	SWAIN, . . . . . <i>Third Base.</i>
GROVER, . . . . . <i>First Base.</i>	MCPHETERS, . . . . . <i>Left Field.</i>
SMITH, . . . . . <i>Second Base.</i>	CLARK, . . . . . <i>Centre Field.</i>
DREW, . . . . <i>Right Field.</i>	

1900.

CLARK, . . . . . <i>Catcher.</i>	NOYES, . . . . . <i>Short Stop.</i>
CUSHMAN, <i>Captain,</i> . . . <i>Pitcher.</i>	COLE, . . . . . <i>Third Base.</i>
WORMELL, . . . . . <i>First Base,</i>	MITCHELL, . . . . . <i>Left Field.</i>
LURVEY, . . . . . <i>Second Base.</i>	WEBSTER, . . . . . <i>Centre Field.</i>
THOMBS, . . . . <i>Right Field.</i>	

1901.

SHAW, . . . . . <i>Catcher.</i>	BROWN, . . . . . <i>Short Stop.</i>
ROSS, . . . . . <i>Pitcher.</i>	MARTIN, . . . . . <i>Third Base.</i>
VARNEY, . . . . . <i>First Base.</i>	KELLER, . . . . . <i>Left Field.</i>
WILLARD, <i>Captain,</i> . . . . <i>Second Base.</i>	PRITHAM, . . . . . <i>Centre Field.</i>
STILPHEN, . . . . <i>Right Field.</i>	

1902.

DOW, . . . . . <i>Catcher.</i>	WEBB, . . . . . <i>Short Stop.</i>
CARR, . . . . . <i>Pitcher.</i>	CHASE, . . . . . <i>Third Base.</i>
LIVERMORE, . . . . . <i>First Base.</i>	BACHELDOR, . . . . . <i>Left Field.</i>
FOGG, <i>Captain,</i> . . . . . <i>Second Base.</i>	HAMILTON, . . . . . <i>Centre Field.</i>
GLASS, . . . . <i>Right Field.</i>	



## 'VARSITY ELEVEN.

H. H. OSWALD, '99, . . . . *Manager.*

J. H. WIGHT, 1902, . . . . .	<i>Right End.</i>
R. G. WORMELL, 1900, . . . . .	<i>Right Tackle.</i>
D. H. PERKINS, 1900, . . . . .	<i>Right Guard.</i>
W. B. CASWELL, '99, . . . . .	<i>Centre.</i>
A. L. BIRD, 1900, <i>Captain,</i> . . . . .	<i>Left Guard.</i>
A. L. GROVER, '99, . . . . .	<i>Left Tackle.</i>
A. S. PAGE, 1900, . . . . .	<i>Left End.</i>
E. E. PALMER, '99, . . . . .	<i>Quarter Back.</i>
H. A. HATCH, 1900, . . . . .	<i>Right Half Back.</i>
G. H. DAVIS, 1901, . . . . .	<i>Left Half Back.</i>
W. B. THOMBS, 1900, . . . . .	<i>Full Back.</i>

*Substitutes*—W. A. ARMES, 1901, W. E. BARROWS, 1901, A. R. DAVIS, 1901,  
S. CLARK, 1901, W. C. CLARK, 1900, C. A. ROBBINS, 1900.







## CLASS ELEVENS.

'99,

H. H. OSWALD, . . . . .	<i>Manager.</i>	H. F. HOXIE, . . . . .	<i>Left Tackle.</i>
W. B. MORELL, . . . . .	<i>Right End.</i>	C. C. WHITTIER, . . . . .	<i>Left End.</i>
H. F. NOYES, . . . . .	<i>Right Tackle.</i>	H. P. MAYO, . . . . .	<i>Quarter Back.</i>
E. S. MOSHER, . . . . .	<i>Right Guard.</i>	H. J. PRETTO, . . . . .	<i>Right Half Back.</i>
W. B. CASWELL, . . . . .	<i>Centre.</i>	E. E. PALMER, <i>Capt.</i> , . . . . .	<i>Left Half Back.</i>
W. NELSON, . . . . .	<i>Left Guard.</i>	A. L. GROVER, . . . . .	<i>Full Back.</i>
<i>Substitutes : SWAIN, BELCHER.</i>			

1900.

J. A. HAYES, . . . . .	<i>Manager.</i>	A. S. PAGE, . . . . .	<i>Left Tackle.</i>
C. A. ROBBINS, . . . . .	<i>Right End.</i>	W. C. CLARK, . . . . .	<i>Left End.</i>
R. H. WORMELL, <i>Capt.</i> , . . . . .	<i>Right Tackle.</i>	H. A. HATCH, . . . . .	<i>Quarter Back.</i>
D. H. PERKINS, . . . . .	<i>Right Guard.</i>	F. M. ROLLINS, . . . . .	<i>Right Half Back.</i>
A. H. FORTIER, . . . . .	<i>Centre.</i>	J. E. FRENCH, . . . . .	<i>Left Half Back.</i>
A. L. BIRD, . . . . .	<i>Left Guard.</i>	W. B. THOMBS, . . . . .	<i>Full Back.</i>
<i>Substitutes : JUDGE, LURVEY, COLE, TATE.</i>			

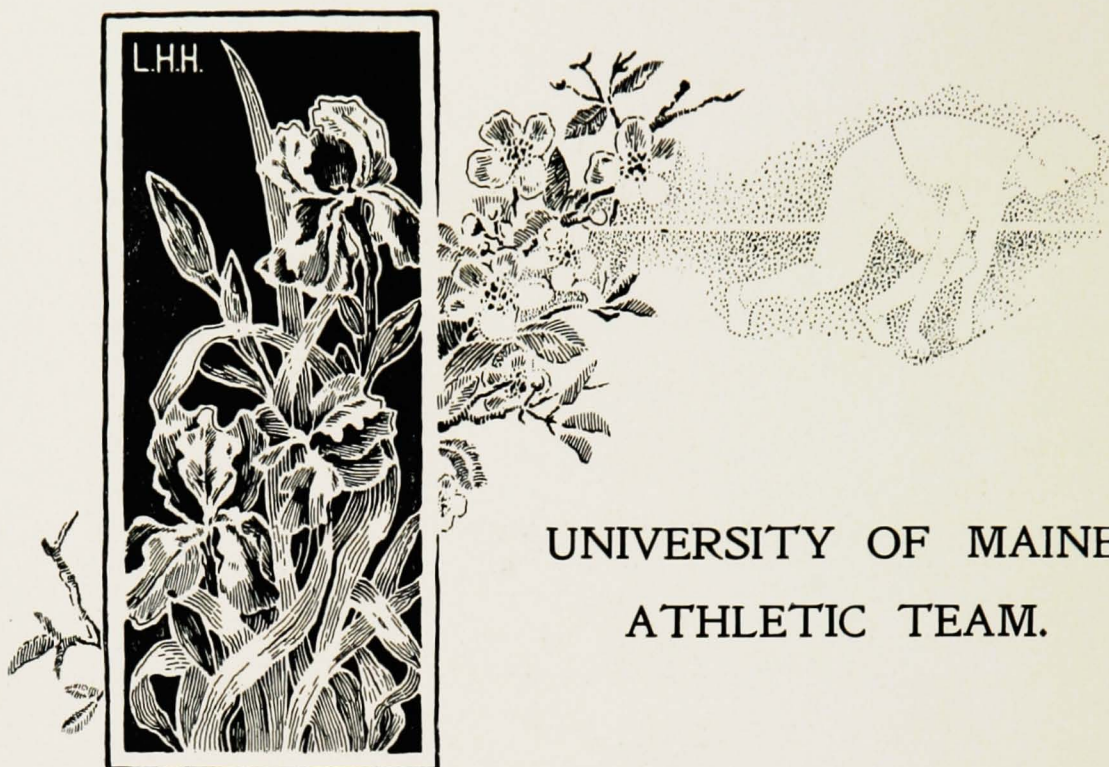
1901.

L. H. HARVEY, . . . . .	<i>Manager,</i>	C. WHITTIER, . . . . .	<i>Left Tackle.</i>
S. CLARK, . . . . .	<i>Right End.</i>	L. H. HARVEY, . . . . .	<i>Left End.</i>
G. E. GOODWIN, . . . . .	<i>Right Tackle.</i>	S. D. THOMPSON, . . . . .	<i>Quarter Back.</i>
W. A. WILLARD, . . . . .	<i>Right Guard.</i>	P. R. KELLER, . . . . .	<i>Right Half Back.</i>
W. E. BARROWS, . . . . .	<i>Centre.</i>	G. H. DAVIS, . . . . .	<i>Left Half Back.</i>
H. P. HOYT, . . . . .	<i>Left Guard.</i>	W. A. ARMES, <i>Capt.</i> , . . . . .	<i>Full Back.</i>
<i>Substitutes : DAVIS, MARTIN, LIBBY.</i>			

1902.

H. PIPES, . . . . .	<i>Manager.</i>	R. G. DOW, . . . . .	<i>Left Tackle.</i>
J. H. WIGHT, . . . . .	<i>Right End.</i>	P. MCCARTHY, . . . . .	<i>Left End.</i>
N. A. CHASE, . . . . .	<i>Right Tackle.</i>	B. BODGE, . . . . .	<i>Quarter Back.</i>
P. H. MOSHER, . . . . .	<i>Right Guard.</i>	W. H. ELDRIDGE, . . . . .	<i>Right Half Back.</i>
A. G. HAMILTON, . . . . .	<i>Centre.</i>	A. W. BACHELDOR, . . . . .	<i>Left Half Back.</i>
R. H. SMITH, . . . . .	<i>Left Guard.</i>	E. H. DOW, <i>Capt.</i> , . . . . .	<i>Full Back.</i>
<i>Substitute : S. S. LOWE.</i>			





## UNIVERSITY OF MAINE ATHLETIC TEAM.

C. A. PEARCE, . . . *Manager.*

H. H. OSWALD, . . . *Assistant Manager.*

B. A. GIBBS, '98, *Captain.*

H. P. MERRILL, '98.

A. L. GROVER, '99.

H. A. HATCH, 1900.

F. M. ROLLINS, 1900.

R. H. SABINE, 1900.

E. M. TATE, 1900.

J. E. FRENCH, 1900.

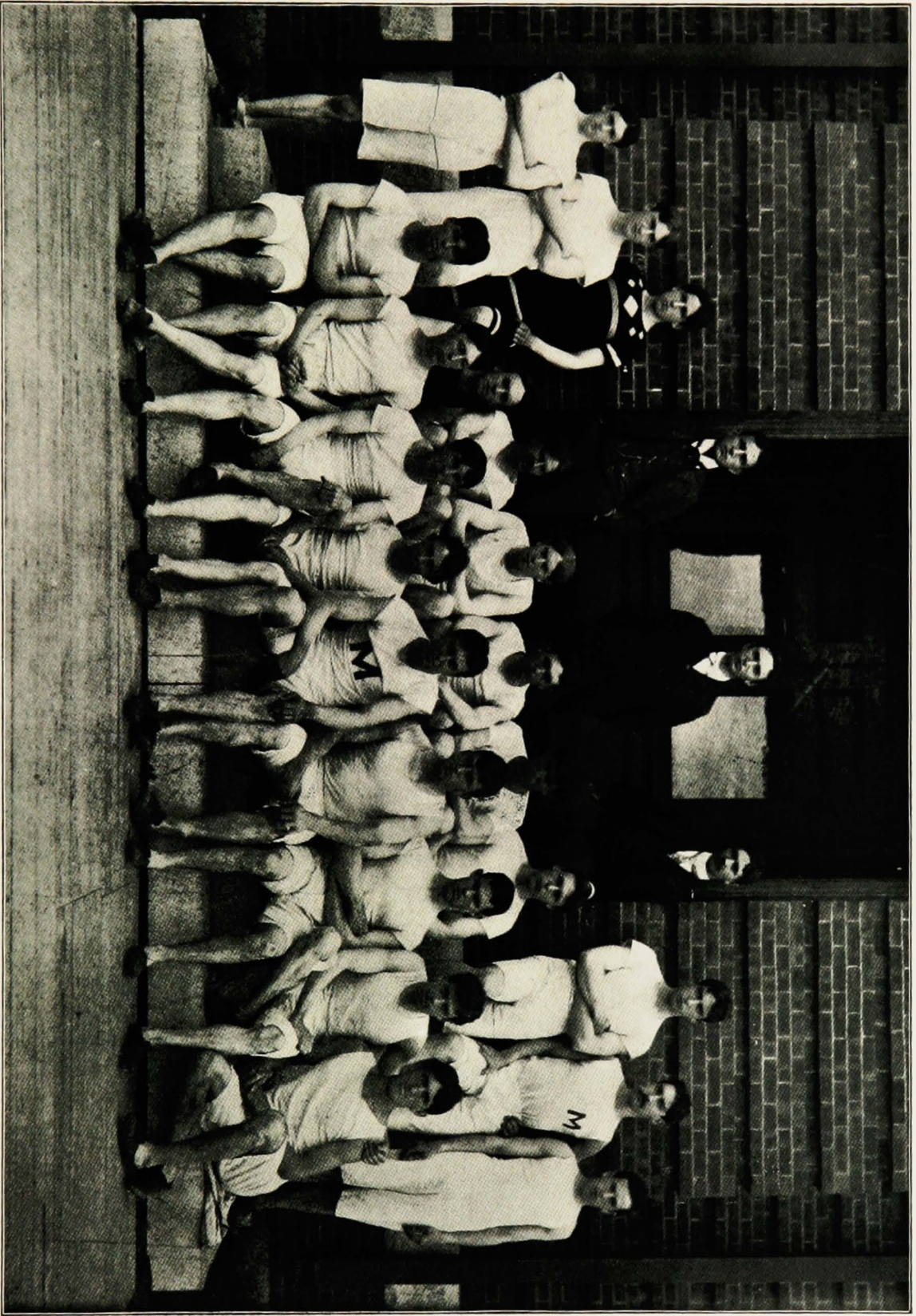
G. E. GOODWIN, 1901.

R. W. LINN, 1901.

## UNIVERSITY OF MAINE RECORDS.

100 Yards Dash, . . . . .	F. M. ROLLINS, 1900, . . . . .	10 1-5 sec.
220 Yards Dash, . . . . .	F. M. ROLLINS, 1900, . . . . .	23 2-5 sec.
440 Yards Dash, . . . . .	G. E. GOODWIN, 1901, . . . . .	56 sec.
Half Mile Run, . . . . .	G. E. GOODWIN, 1901, . . . . .	2 min. 10 1-5 sec.
Mile Run, . . . . .	W. L. HOLYOKE, '97, . . . . .	5 min. 24 $\frac{3}{4}$ sec.
Two Mile Run, . . . . .	P. WALKER, '96, . . . . .	12 min. 1 sec.
120 Yards Hurdle, . . . . .	H. P. MERRILL, '98, . . . . .	18 1-5 sec.
220 Yards Hurdle, . . . . .	A. S. MERRILL, '99, . . . . .	29 sec.
Running High Jump, . . . . .	B. A. GIBBS, '98, . . . . .	5 ft. 5 $\frac{1}{2}$ in.
Running Broad Jump, . . . . .	A. L. GROVER, '99, . . . . .	19 ft. 4 in.
Pole Vault, . . . . .	G. A. HERSEY, 1900, . . . . .	9 ft.
Putting 16-pound Shot, . . . . .	A. L. GROVER, '99, . . . . .	37 ft. 1 in.
Throwing 16-pound Hammer, . . . . .	A. L. GROVER, '99, . . . . .	102 ft. 8 in.
Throwing Discus, . . . . .	A. L. GROVER, '99, . . . . .	115 ft. 6 $\frac{1}{4}$ in.
Two Mile Bicycle, . . . . .	M. E. ELLIS, '96, . . . . .	5 min. 50 sec.









# FIFTH ANNUAL MEET OF THE UNIVERSITY OF MAINE ATHLETIC ASSOCIATION.

100 Yards Dash, . . . . .	F. M. ROLLINS, 1900, . . . . . 10 2-5 sec. A. L. GROVER, '99, H. A. HATCH, 1900.
220 Yards Dash, . . . . .	F. M. ROLLINS, 1900, . . . . . 23 3-5 sec. H. A. HATCH, 1900, E. E. PALMER, '99.
440 Yards Dash, . . . . .	G. E. GOODWIN, 1901, . . . . . 56 sec. W. B. CASWELL, '99, A. S. MERRILL, '99.
Half Mile Run, . . . . .	G. E. GOODWIN, 1901, . . . . . 2 min. 16 3-5 sec. H. P. MERRILL, '98, E. S. MILES, 1900.
Mile Run, . . . . .	E. M. TATE, 1900, . . . . . 5 min. 31 2-5 sec. J. E. FRENCH, 1900, G. E. GOODWIN, 1901.
Two Mile Run, . . . . .	G. H. DAVIS, 1901, . . . . . 12 min. 13 4-5 sec. J. E. FRENCH, 1900, W. A. LIBBY, 1901.

120 Yards Hurdle, . . . . .	H. P. MERRILL, '98, . . . . . 19 3-5 sec. C. L. COLE, 1900, W. E. BELCHER, '99.
220 Yards Hurdle, . . . . .	C. L. COLE, 1900, . . . . . F. M. DAVIS, 1901, H. P. MERRILL, '98.
Running High Jump, . . . . .	H. P. MERRILL, '98, . . . . . 5 ft. F. W. SAWTELLE, '98, S. P. SHAW, 1901.
Pole Vault, . . . . .	G. A. HERSEY, 1900, . . . . . 8 ft. 8 in. W. A. BOARDMAN, 1901, E. E. PALMER, '99.
Putting 16-pound Shot, . . . . .	A. L. GROVER, '99, . . . . . 34 ft. 10 in. L. N. EDWARDS, '98, H. P. HOYT, 1901.
Throwing 16-pound Hammer, . . . . .	A. L. GROVER, '99, . . . . . 97 ft. 8 in. R. A. SABINE, 1900, J. W. DEARBORN, '98.
Running Broad Jump, . . . . .	H. A. HATCH, 1900, . . . . . 18 ft. 6 in. J. H. SWAIN, '99, A. L. GROVER, '99.
Two Mile Bicycle, . . . . .	R. W. LINN, 1901, . . . . . 6 min. 21 sec. F. E. WATTS, 1901, A. S. PAGE, 1900.
Throwing Discus, . . . . .	A. L. GROVER, '99, . . . . . 106 ft. 6 in. R. H. SABINE, 1900, H. P. MERRILL, '98.



## SUMMARY OF POINTS.

---

	'98	'99	'00	'01
100-yards dash . . . . .		3	6	
220-yards dash . . . . .		1	8	
440-yards dash . . . . .		4		5
One-half-mile run . . . . .	3		1	5
One-mile run . . . . .			8	1
Two-mile run . . . . .			3	6
120-yards hurdles . . . . .	5	1	3	
220-yards hurdles . . . . .	1		5	3
Running high jump . . . . .	8			1
Pole vault . . . . .		1	5	3
Putting 16-lb. shot . . . . .	3	5		1
Throwing 16-lb. hammer . . . . .	1	5	3	
Broad jump . . . . .		4	5	
Two-mile bicycle . . . . .			1	8
	<hr/> 21	<hr/> 24	<hr/> 48	<hr/> 34

## MAINE INTERCOLLEGIATE ATHLETIC ASSOCIATION.

---

*President*, . . . . . J. ARTHUR HAYES, . . . . . University of Maine.  
*Vice President*, . . . . . ROBERT F. CHAPMAN, . . . . . Bowdoin.  
*Secretary*, . . . . . D. L. RICHARDSON, . . . . . Bates.  
*Treasurer*, . . . . . R. A. BAKEMAN, . . . . . Colby.



# FOURTH ANNUAL MEET

## OF THE

### MAINE INTERCOLLEGIATE ATHLETIC ASSOCIATION.

---

100 Yards Dash, . . . . .	ROLLINS, University of Maine, Time, 10 1-5 sec. KENDALL, Bowdoin, STANWOOD, Bowdoin.
Half Mile Run, . . . . .	GOODWIN, Univ. of Maine, . . Time, 2 min. 10 sec. MERRILL, University of Maine, MARSTON, Bowdoin.
120 Yards Hurdle, . . . . .	KENDALL, Bowdoin, . . . . . Time, 16 2-5 sec. HADLOCK, Bowdoin, COTTON, Colby.
440 Yards Dash, . . . . .	SWAN, Bowdoin, . . . . . Time, 54 sec. STETSON, Bowdoin, GOODWIN, University of Maine.
Mile Run, . . . . .	MERRILL, Bates, . . . . . Time, 4 min. 57 1-2 sec. BABB, Bowdoin, TATE, University of Maine.
Two Mile Bicycle, . . . . .	CLOUGH, Bowdoin, . . . . . Time, 5 min. 46 sec. SMALL, Bowdoin, LINN, University of Maine.
220 Yards Hurdle, . . . . .	EDWARDS, Bowdoin, . . . . . Time, 26 4-5 sec. KENDALL, Bowdoin, HADLOCK, Bowdoin.
220 Yards Dash, . . . . .	ROLLINS, Univ. of Maine, . . Time, 23 2-5 sec. HATCH, University of Maine, STANWOOD, Bowdoin.
Two Mile Run, . . . . .	MERRILL, Bates, . . . . . Time, 11 min. 37 sec. BABB, Bowdoin, FRENCH, University of Maine.

Pole Vault, . . . . .	CLARK, Bowdoin, . . . . .	Height, 10 ft. 4 7-8 in.
	WIGNOT, Bowdoin,	
	MINOTT, Bowdoin.	
Putting 16-pound Shot, . . . .	GODFREY, Bowdoin, . . . .	Distance, 36 ft.
	GROVER, University of Maine,	
	BRUCE, Bates.	
Running High Jump, . . . .	STEVENS, Colby, . . . . .	Height, 5 ft. 6 7-8 in.
	GODFREY, Bowdoin, } . . .	Tied for Second.
	JORDAN, Bates,	
Throwing 16-pound Hammer, .	GROVER, Univ. of Maine, . .	Distance, 102 ft. 8 in.
	SAUNDERS, Bates,	
	BRUCE, Bates.	
Running Broad Jump, . . . .	HADLOCK, Bowdoin, . . . .	Distance, 19 ft. 5 in.
	EDWARDS, Bowdoin,	
	ELDER, Bates.	
Throwing Discus, . . . . .	GROVER, Univ. of Maine, . .	Distance, 115 ft. 6 1-4 in.
	PIKE, Colby,	
	SABINE, University of Maine.	

## DISTRIBUTION OF POINTS.

	Bates.	Bowdoin.	Colby.	U. of M.
100 Yards Dash, . . . . .		4		5
Half Mile Run, . . . . .		1		8
120 Yards Hurdle, . . . . .		8	1	
440 Yards Dash, . . . . .		8		1
Mile Run, . . . . .	5	3		1
Two Mile Bicycle, . . . . .		8		1
220 Yards Hurdle, . . . . .		9		
220 Yards Dash, . . . . .		1		8
Two Mile Run, . . . . .	5	3		1
Pole Vault, . . . . .		9		
Putting Shot, . . . . .	1	5		3
Running High Jump, . . . . .	2	2	5	
Throwing Hammer, . . . . .	4			5
Running Broad Jump, . . . . .	1	8		
Throwing Discus, . . . . .			3	6
Totals, . . . . .	18	69	9	39



## MAINE INTERCOLLEGIATE ATHLETIC ASSOCIATION RECORDS.

---

100 Yards Dash, . . . . .	F. M. ROLLINS, U. of M., .	Time, 10 1-5 sec., . . . .	1898
Half Mile Run, . . . . .	C. F. KENDALL, Bowdoin, .	Time, 2 min. 6 3-5 sec.,	1896
120 Yards Hurdle, . . . . .	C. F. KENDALL, Bowdoin, .	Time, 16 2-5 sec., . . . .	1898
440 Yards Dash, . . . . .	C. F. KENDALL, Bowdoin, .	Time, 53 3-4 sec., . . . .	1895
Mile Run, . . . . .	A. W. FOSS, Bates, . . . . .	Time, 4 min. 40 sec., . .	1896
Two Mile Bicycle, . . . . .	H. N. PRATT, Colby, . . . .	Time, 5 min. 4 sec., . .	1896
220 Yards Hurdle, . . . . .	R. S. EDWARDS, Bowdoin, .	Time, 26 4-5 sec., . . . .	1898
220 Yards Dash, . . . . .	J. H. HORNE, Bowdoin, . .	Time, 23 sec., . . . . .	1895
Two Mile Run, . . . . .	L. F. SOULE, Bowdoin, . .	Time, 10 min. 29 1-2 sec.,	1895
Pole Vault, . . . . .	W. B. CLARK, Bowdoin, . .	Height, 10 ft. 4 7-8 in., .	1898
Putting Shot, . . . . .	E. R. GODFREY, Bowdoin, .	Distance, 38 ft. 1 1-4 in.,	1896
Running High Jump, . . . .	W. O. STEVENS, Colby, . .	Height, 5 ft. 6 7-8 in., .	1898
Throwing 16-lb. Hammer, .	G. L. KIMBALL, Bowdoin, .	Distance, 113 ft. 6 in., .	1896
Running Broad Jump, . . .	W. W. BOLSTER, JR., Bates, .	Distance, 20 ft. 2 1-2 in.,	1895
Throwing Discus, . . . . .	A. L. GROVER, U. of M., . .	Distance, 115 ft. 6 1-4 in.,	1898

# NEW ENGLAND INTERCOLLEGIATE ATHLETIC ASSOCIATION.

---

## Officers.

*President*, C. I. DEWITT, Amherst.

*Vice President*, H. S. PRATT, Brown.

*Secretary*, C. BILLINGTON, Wesleyan.

*Treasurer*, R. MURRAY, Massachusetts Institute of Technology.

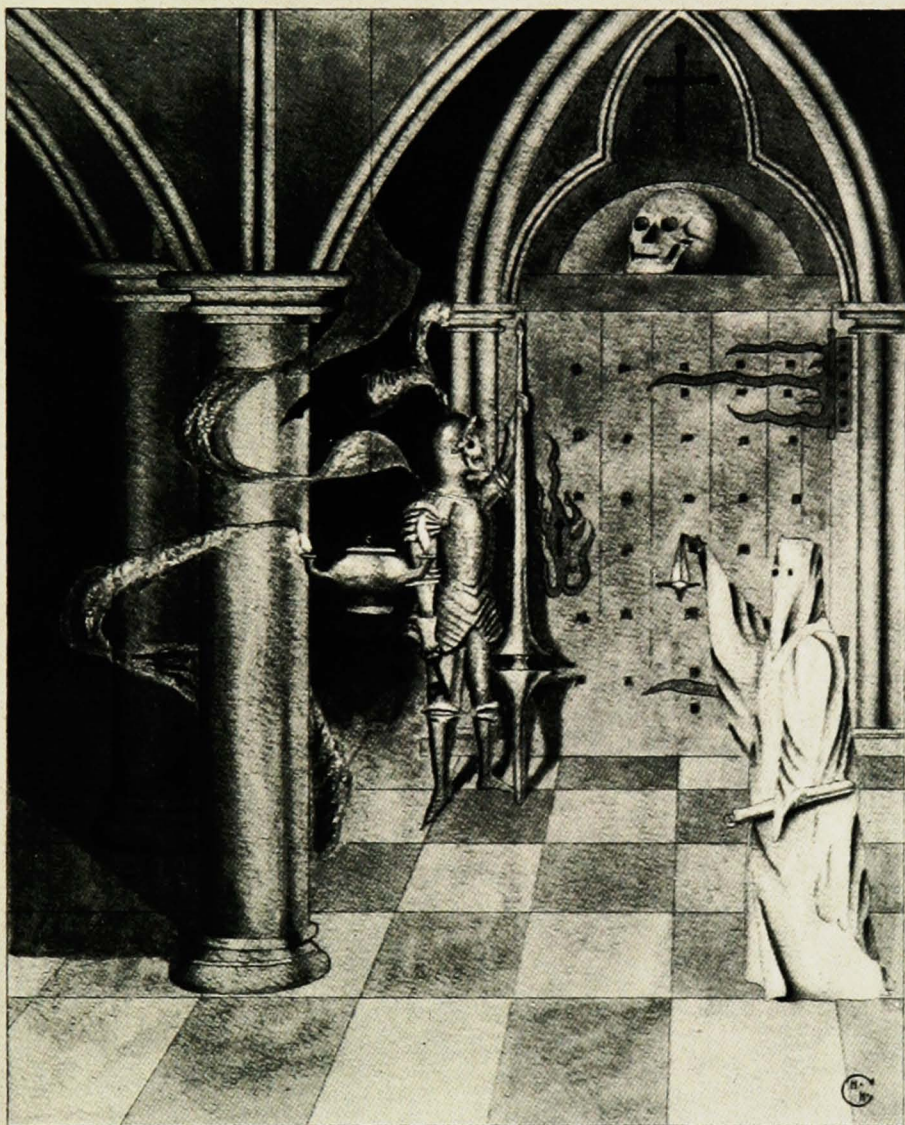
## Executive Committee.

H. D. CROWLEY, . . . . . Dartmouth.  
T. A. LYNCH, . . . . . Dartmouth.  
N. R. BIRGE, . . . . . Worcester Polytechnic Institute.  
C. N. STODDARD, . . . . . Williams.  
E. G. LITTEL, . . . . . Trinity.

## Members.

AMHERST,	TUFTS,
BOWDOIN,	UNIVERSITY OF MAINE,
BROWN,	WESLEYAN,
DARTMOUTH,	WILLIAMS,
TRINITY,	WOCESTER TECHNOLOGY,
MASSACHUSETTS INSTITUTE OF TECHNOLOGY.	





**Fraternities**✠



## Q. T. V.

---

Founded at Massachusetts Agricultural College, 1869.

---

COLORS :— *Lavender and White.*

FLOWER :— *White Carnation.*

---

### Chapters in Order of Establishment.

AMHERST, . . . . .	Established 1869.
Massachusetts Agricultural College.	
ORONO, . . . . .	Established 1874.
University of Maine.	
GRANITE, . . . . .	Established 1881.
New Hampshire State College.	
BOSTON ALUMNI CHAPTER, . . . . .	Established 1889.



## Q. T. V.

---

### Members in Faculty.

HORACE M. ESTABROOKE, '76,	JAMES N. HART, '85.
JAMES M. BARTLETT, '80,	FREMONT L. RUSSELL, '85.
WALTER FLINT, '82,	HOWARD S. WEBB, '87.
ALLEN ROGERS, '97.	

### Active Members.

'99

CHARLES E. BLACKWELL,	MORRIS H. POWELL,
ALSON E. BOYNTON,	ARTHUR C. WESCOTT,
IRVING H. DREW,	CHARLES C. WHITTIER,
ARTHUR H. FORTIER.	

1900

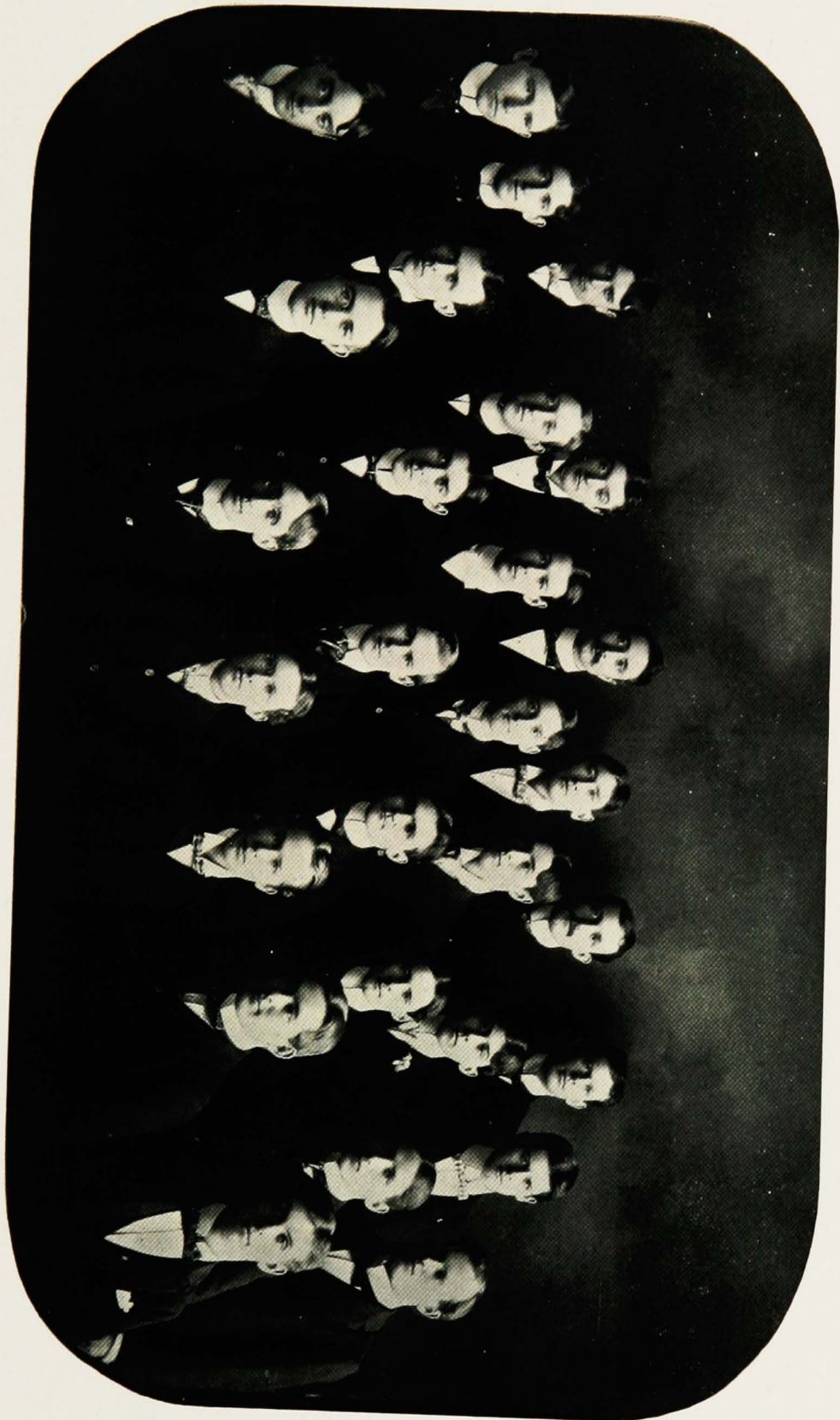
WILKIE C. CLARK,	FRANK McDONALD,
MALCOLM C. HART,	FRED C. MITCHELL,
FRANK O. JOHNSON,	FRANK H. MITCHELL,
HOWARD L. MADDOCKS,	LEO. B. RUSSELL.

1901

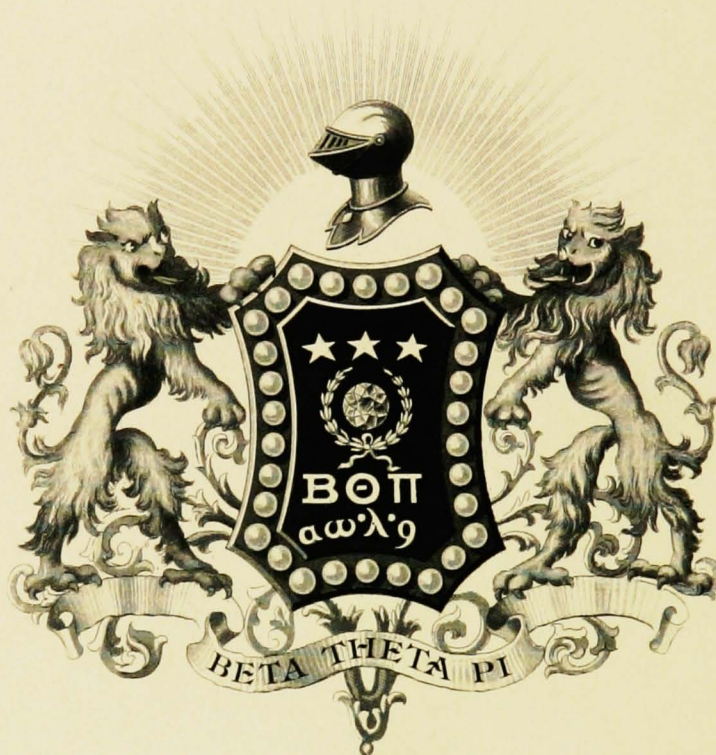
WALDO H. BENNETT,	LEROY H. HARVEY,
THEODORE S. BRYER,	ROBERT W. LINN,
CLIFFORD D. HARVEY,	CHARLES A. MITCHELL,
BERTRAND C. MARTIN.	

1902

BYRON H. BODGE,	ALPHEUS C. LYON,
WILLIAM H. CROWELL,	CHARLES W. MARGESSON,
CHARLES E. CHAMBERLAIN,	EZRA G. MITCHELL,
HERBERT O. FARRINGTON,	HERBERT W. SEWELL,
JAMES M. GREEN,	ORMAN T. CIMPHER.







COPYRIGHTED 1899.  
E. A. WRIGHT, PHILA.  
1514

# ROLL OF CHAPTERS

## OF THE

### BETA THETA PI FRATERNITY.

---

#### District No. 1

Harvard University, . . . . .	ETA, . . . . .	Cambridge, Mass.
Brown University, . . . . .	KAPPA, . . . . .	Providence, R. I.
Boston University, . . . . .	UPSILON, . . . . .	Boston, Mass.
University of Maine, . . . . .	BETA ETA, . . . . .	Orono, Me.
Amherst College, . . . . .	BETA IOTA, . . . . .	Amherst, Mass.
Dartmouth College, . . . . .	ALPHA OMEGA, . . . . .	Hanover, N. H.
Wesleyan University, . . . . .	MU EPSILON, . . . . .	Middletown, Conn.
Yale University, . . . . .	PHI CHI, . . . . .	New Haven, Conn.

#### District No. 2

Rutgers College, . . . . .	BETA GAMMA, . . . . .	New Brunswick, N. J.
Cornell University, . . . . .	BETA DELTA, . . . . .	Ithaca, N. Y.
Stevens Institute of Technology, . . . . .	SIGMA, . . . . .	Hoboken, N. J.
St. Lawrence University, . . . . .	BETA ZETA, . . . . .	Canton, N. Y.
Colgate University, . . . . .	BETA THETA, . . . . .	Hamilton, N. Y.
Union University, . . . . .	NU, . . . . .	Schenectady, N. Y.
Columbia College, . . . . .	ALPHA ALPHA, . . . . .	New York, N. Y.
University of Syracuse, . . . . .	BETA EPSILON, . . . . .	Syracuse, N. Y.

#### District No. 3

Washington-Jefferson, . . . . .	GAMMA, . . . . .	Washington, Pa.
Dickinson College, . . . . .	ALPHA SIGMA, . . . . .	Carlisle, Pa.
Johns Hopkins University, . . . . .	ALPHA CHI, . . . . .	Baltimore, Md.
University of Pennsylvania, . . . . .	PHI, . . . . .	Philadelphia, Pa.
Pennsylvania State College, . . . . .	ALPHA UPSILON, . . . . .	State College, Pa.
Lehigh University, . . . . .	BETA CHI, . . . . .	South Bethlehem, Pa.

#### District No. 4

Hampden-Sidney College, . . . . .	ZETA, . . . . .	Hampden-Sidney, Va.
University of North Carolina, . . . . .	ETA BETA, . . . . .	Chapel Hill, N. C.
University of Virginia, . . . . .	OMICRON, . . . . .	Charlottesville, Va.
Davidson College, . . . . .	PHI ALPHA, . . . . .	Davidson College, N. C.

#### District No. 5

Centre College, . . . . .	EPSILON, . . . . .	Danville, Ky.
Cumberland University, . . . . .	MU, . . . . .	Lebanon, Tenn.



University of Mississippi, . . . . .	BETA BETA, . . . . .	Oxford, Miss.
Vanderbilt University, . . . . .	BETA LAMBDA, . . . . .	Nashville, Tenn.
University of Texas, . . . . .	BETA OMICRON . . . . .	Austin, Texas.

#### District No. 6

Miami University, . . . . .	ALPHA, . . . . .	Oxford, O.
University of Cincinnati, . . . . .	BETA MU, . . . . .	Cincinnati, O.
Western Reserve University, . . . . .	BETA, . . . . .	Cleveland, O.
Ohio University, . . . . .	BETA KAPPA, . . . . .	Athens, O.
Ohio Wesleyan University, . . . . .	THETA, . . . . .	Delaware, O.
Bethany College, . . . . .	PSI, . . . . .	Bethany, W. Va.
Wittenberg College, . . . . .	ALPHA GAMMA, . . . . .	Springfield, O.
Denison University, . . . . .	ALPHA ETA, . . . . .	Granville, O.
University of Wooster, . . . . .	ALPHA LAMBDA, . . . . .	Wooster, O.
Kenyon College, . . . . .	BETA ALPHA, . . . . .	Gambier, O.
Ohio State University, . . . . .	THETA ALPHA, . . . . .	Columbus, O.

#### District No. 7

De Pauw University, . . . . .	DELTA, . . . . .	Greencastle, Ind.
Indiana University, . . . . .	PHI, . . . . .	Bloomington, Ind.
University of Michigan, . . . . .	LAMBDA, . . . . .	Ann Arbor, Mich.
Wabash College, . . . . .	TAU, . . . . .	Crawfordsville, Ind.
Hanover College, . . . . .	IOTA, . . . . .	Hanover, Ind.

#### District No. 8

Knox College, . . . . .	ALPHA XI, . . . . .	Galesburg, Ill.
Beloit College, . . . . .	CHI, . . . . .	Beloit, Wis.
University of Iowa, . . . . .	ALPHA BETA, . . . . .	Iowa City, Iowa.
Iowa Wesleyan University, . . . . .	ALPHA EPSILON, . . . . .	Mt. Pleasant, Iowa.
University of Chicago, . . . . .	LAMBDA RHO, . . . . .	Chicago, Ill.
University of Wisconsin, . . . . .	ALPHA PI, . . . . .	Madison, Wis.
Northwestern University, . . . . .	RHO, . . . . .	Evanston, Ill.
University of Minnesota, . . . . .	BETA PI, . . . . .	Minneapolis, Minn.

#### District No. 9

Westminster College, . . . . .	ALPHA DELTA, . . . . .	Fulton, Mo.
University of Kansas, . . . . .	ALPHA NU, . . . . .	Lawrence, Kan.
University of Denver, . . . . .	ALPHA ZETA, . . . . .	Denver, Col.
University of Nebraska, . . . . .	ALPHA TAU, . . . . .	Lincoln, Neb.
University of Missouri, . . . . .	ZETA PHI, . . . . .	Columbia, Mo.

#### District No. 10

Leland Stanford, Jr., University, . . . . .	LAMBDA SIGMA, . . . . .	Palo Alto, Cal.
University of California, . . . . .	OMEGA, . . . . .	Berkeley, Cal.

## BETA ETA CHAPTER.

---

Established in 1879.

---

### Members in Faculty.

R. K. JONES, '86,	C. P. WESTON, '96,
N. C. GROVER, '90,	E. B. NICHOLS, Wesleyan, '94,
H. S. BOARDMAN, '95,	R. HAMLIN, '98,
H. G. DORSEY, Denison, '97.	

### Active Members.

'99

WALLACE E. BELCHER,	REGINALD L. FERNALD,
CYRENIUS W. CROCKETT,	WILLIAM B. MORELL,
MARSHALL B. DOWNING,	EDWARD E. PALMER.

1900

ALAN L. BIRD,	PHILIP R. GOODWIN,
FRANK H. BOWERMAN,	HOWARD A. HATCH,
FRED H. VOSE.	

1901

WILLIAM E. BARROWS,	EDMUND I. DAVIS,
FRANK S. BENSON,	WILLIAM MCC. SAWYER,
SAMUEL D. THOMPSON.	

1902

SAMUEL P. DAVIS,	EUGENE N. HUNTING,
EDWARD W. DELANO,	EDWIN B. ROSS,
HORACE P. HAMLIN,	EDWIN S. TRUE,
A. GEORGE HAMILTON,	ARNOLD S. WEBB.



# ROLL OF CHAPTERS

## OF THE

### KAPPA SIGMA FRATERNITY.

---

State University, . . . . .	GAMMA, . . . . .	Baton Rouge, La.
Davidson College, . . . . .	DELTA, . . . . .	Davidson, N. C.
Centenary College, . . . . .	EPSILON, . . . . .	Jackson, La.
University of Virginia, . . . . .	ZETA, . . . . .	Charlottesville, Va.
Randolph-Macon College, . . . . .	ETA, . . . . .	Ashland, Va.
Cumberland University, . . . . .	THETA, . . . . .	Lebanon, Tenn.
Southwestern University, . . . . .	IOTA, . . . . .	Georgetown, Tex.
Vanderbilt College, . . . . .	KAPPA, . . . . .	Nashville, Tenn.
University of Tennessee, . . . . .	LAMBDA, . . . . .	Knoxville, Tenn.
Washington and Lee University, . . . . .	MU, . . . . .	Lexington, Va.
Mary-William College, . . . . .	NU, . . . . .	Williamsburg, Va.
University of Arkansas, . . . . .	XI, . . . . .	Fayetteville, Ark.
Swarthmore College, . . . . .	PI, . . . . .	Swarthmore, Pa.
Tulane University, . . . . .	SIGMA, . . . . .	New Orleans, La.
University of Texas, . . . . .	TAU, . . . . .	Austin, Tex.
Hampden-Sidney College, . . . . .	UPSILON, . . . . .	Hampden-Sidney, Pa.
Southwestern Presbyterian University, . . . . .	PHI, . . . . .	Clarksville, Tenn.
Purdue University, . . . . .	CHI, . . . . .	Lafayette, Ind.
University of Maine, . . . . .	PSI, . . . . .	Orono, Me.
University of the South, . . . . .	OMEGA, . . . . .	Sewanee, Tenn.
Trinity College, . . . . .	ETA PRIME, . . . . .	Durham, N. C.
Mercer University, . . . . .	ALPHA BETA, . . . . .	Macon, Ga.
University of Illinois, . . . . .	ALPHA GAMMA, . . . . .	Champaign, Ill.
Pennsylvania State College, . . . . .	ALPHA DELTA, . . . . .	State College, Pa.
University of Pennsylvania, . . . . .	ALPHA EPSILON, . . . . .	Philadelphia, Pa.
University of Michigan, . . . . .	ALPHA ZETA, . . . . .	Ann Arbor, Mich.
Columbia University, . . . . .	ALPHA ETA, . . . . .	Washington, D. C.
Southwestern Baptist University, . . . . .	ALPHA THETA, . . . . .	Jackson, Tenn.

U. S. Grant University, . . . . .	ALPHA IOTA, . . . . .	Athens, Tenn.
Cornell University, . . . . .	ALPHA KAPPA, . . . . .	Ithica, N. Y.
University of Vermont, . . . . .	ALPHA LAMBDA, . . . . .	Burlington, Vt.
University of North Carolina, . . . . .	ALPHA MU, . . . . .	Chapel Hill, N. C.
Wofford College, . . . . .	ALPHA NU, . . . . .	Spartanburg, S. C.
Bethel College, . . . . .	ALPHA XI, . . . . .	Russellville, Ky.
University of Kentucky, . . . . .	ALPHA OMICRON, . . . . .	Lexington, Ky.
Wabash College, . . . . .	ALPHA PI, . . . . .	Wabash, Ind.
Bowdoin College, . . . . .	ALPHA RHO, . . . . .	Brunswick, Me.
Ohio State University, . . . . .	ALPHA SIGMA, . . . . .	Columbus, Ohio.
Georgia School of Technology, . . . . .	ALPHA TAU, . . . . .	Atlanta, Ga.
Millsaps College, . . . . .	ALPHA UPSILON, . . . . .	Jackson, Miss.
Bucknell University, . . . . .	ALPHA PHI, . . . . .	Lewisburg, Pa.
University of Nebraska, . . . . .	ALPHA PSI, . . . . .	Lincoln, Neb.
Lake Forest University, . . . . .	ALPHA CHI, . . . . .	Lake Forest, Ill.
William Jewell College, . . . . .	ALPHA OMEGA, . . . . .	Liberty, Mo.
Brown University, . . . . .	BETA ALPHA, . . . . .	Providence, R. I.
Richmond College, . . . . .	BETA BETA, . . . . .	Richmond, Va.
Missouri State University, . . . . .	BETA GAMMA, . . . . .	Columbia, Mo.
Washington and Jefferson College, . . . . .	BETA DELTA, . . . . .	Washington, Pa.
University of Wisconsin, . . . . .	BETA EPSILON, . . . . .	Madison, Wis.

