

1949

# Annual Report the Year Ending March 31, 1949, Lewiston, Maine

Lewiston (Me.)

Follow this and additional works at: <https://digitalcommons.library.umaine.edu/towndocs>

---

## Repository Citation

Lewiston (Me.), "Annual Report the Year Ending March 31, 1949, Lewiston, Maine" (1949). *Maine Town Documents*. 4969.  
<https://digitalcommons.library.umaine.edu/towndocs/4969>

This Report is brought to you for free and open access by DigitalCommons@UMaine. It has been accepted for inclusion in Maine Town Documents by an authorized administrator of DigitalCommons@UMaine. For more information, please contact [um.library.technical.services@maine.edu](mailto:um.library.technical.services@maine.edu).

# Annual Report

The Year Ending  
MARCH 31

# 1949



LEWISTON  
*Maine*

AUG 26 1948

**THE INDUSTRIAL HEART OF MAINE**



# MUNICIPAL ACTIVITIES

PERIOD

April 1st, 1948 to March 31st, 1949

LEWISTON • MAINE



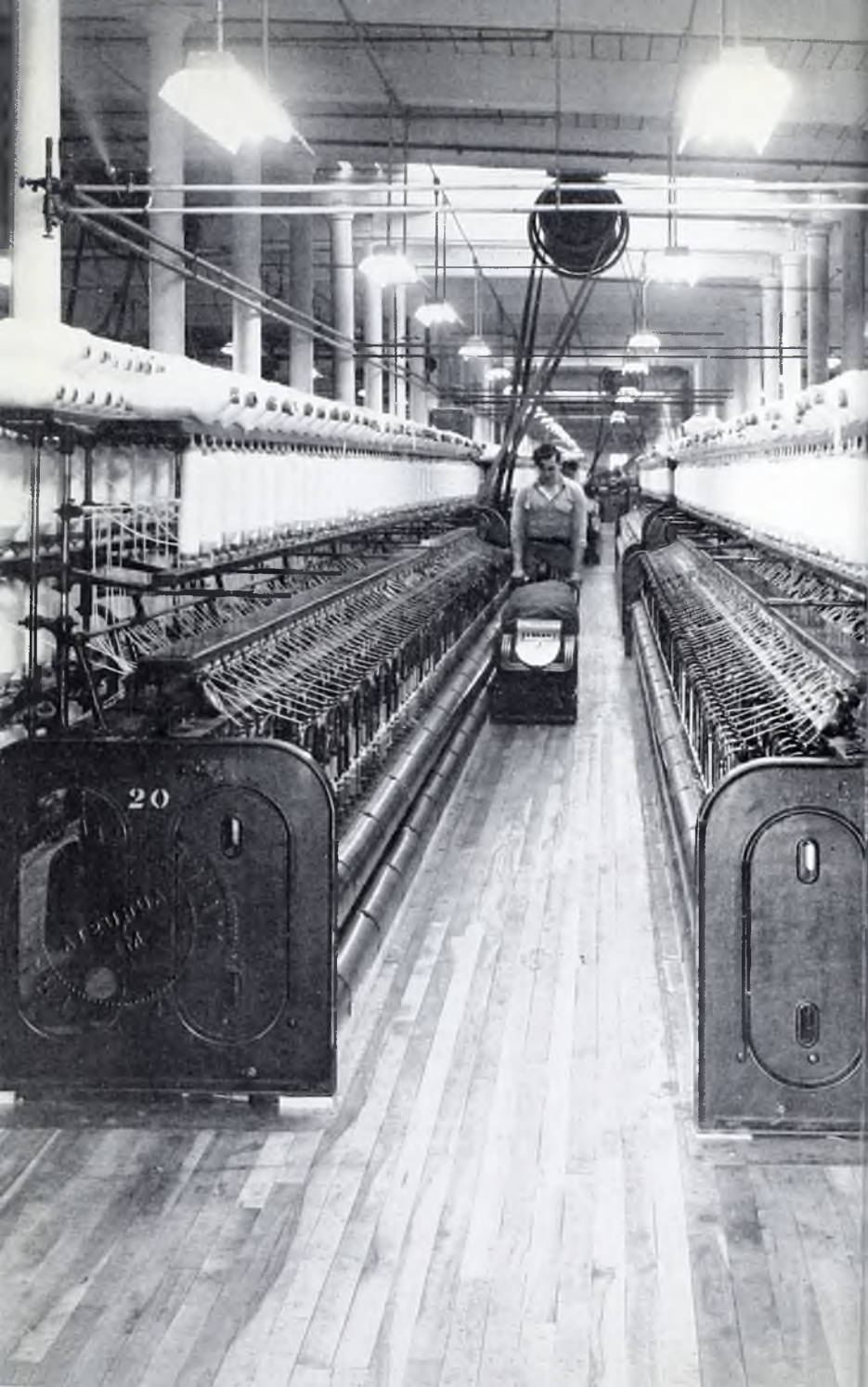
POPULATION 38,598



*Edited by*

LUCIEN LABEL

City Clerk



# F O R E W O R D

CITY GOVERNMENT is the highest form of democracy and it is the purpose of this annual report to inform the citizens of Lewiston on the stewardship of their officials.

Measured by the opportunities for effective participation, the highest, most effective form of democratic government is that which is closest to the people, the level of government which reaches down to where people live. This is city government.

It is an honor as well as a grave responsibility to be part of city government. If democracy cannot be made to work at the city level, then democracy will be supplanted by some other form of government.

# Lewiston at a Glance

**Industries** Lewiston is the trading center of a large area. Within a 50 mile radius live 450,000. Important products include textiles, shoes, leather novelties, belting, dress goods, bricks, sheet metal, lumber, furs, medicines, beverages, bleaching, finishing and dyeing, store fixtures, cigars, brooms, automobile bodies, and many others.

**Population** Lewiston's growth has been steady. At the end of the first decade after settlement the population was 948. In 1850 there were 4,584 inhabitants; 1900, 23,761; 1940, 38,598; estimated in 1948, 45,000. It is the second largest city in the State. Twenty nationalities are represented and 80% of the population is native born.

**Institutions** Lewiston's institutions include the Central Maine General and St. Mary's General Hospitals, both of the highest rating; the Marcotte Home for Aged People, Sarah C. Frye Home for Aged Women, St. Joseph's Orphanage for Girls and the Healy Asylum for Boys. Bates College, within a mile of City Hall, is noted for its beauty. Lewiston has one business college, eight parochial schools with an enrollment of 4,500, two high schools, eight elementary schools, and seven kindergartens. Teachers number 129, student enrollment 3,300. Lewiston has fifteen churches, including six Roman Catholic, Episcopal, Methodist Episcopal, United Baptist, Federated Congregational and Universalist, Greek Orthodox, Lutheran, Christian Science, Hebrew, and Seventh-day Adventist.



**Government** Council-Commission form adopted in 1939. Total 1948-49 budget \$2,217,120.50. Total assessed valuation \$36,610,252.00, including \$28,606,047.00 in real estate and \$8,004,205.00 in personal estate. Tax rate 45 mills.

**History** Settled 1770. Plantation name Lewistown. Part set off to form town of Greene June 18, 1788. Lewiston incorporated the 94th town February 18, 1795. Boundary between Lewiston and Lisbon established February 6, 1826. Parts of Greene and Webster annexed April 20, 1852. Set off from Lincoln county to form part of Androscoggin county March 18, 1854. Incorporated as a city March 15, 1861. Adopted charter March 16, 1863. Annexation of Auburn enacted January 25, 1870 but rejected on referendum. Part set off to Webster February 7, 1895 and reannexed to Lewiston March 8, 1895. New charter adopted March 6, 1939. Government took office May 8, 1939.

**Topography** Lewiston, "The Industrial Heart of Maine," lies on the easterly side of the Androscoggin River which has four large power developments within a few miles. Bounds, Greene, Webster, Lisbon, Durham, Auburn. Greatest length, 11.6 miles (north to south). Greatest width 5.35 miles (east to west). Area in acres: Land 22,464 (including 448 in bog or swamp); inland water 134, total 22,598. Area in square miles: Land 35 (including 0.7 in bog or swamp), inland water 0.21, total 35.21. Minimum elevation 110 feet, maximum 500 feet. Principal elevations: Thorncrag 500 feet, Hedgehog Hill 480, Robinson Mountain 420, Mount David 400. Pond: No Name Pond, length 1.2 miles. Principal streams: No Name Brook, Salmon Brook, Harts Brook, Stetson Brook.





# *Principal Accomplishments*

## 1948 - 49 Administration

1. Adoption of new schedule of business license fees.
2. Installation of modern time clock for hourly employes of Public Works Department.
3. Program of micro-filming city records completed.
4. Completion of Thorne's Corner sewerage disposal system.
5. Adoption of master five-year plan for fire insurance on all city property.
6. Installation of 24 modern luminaries on Main Street traffic islands.
7. New patrol wagon and five cruiser cars purchased for police.
8. New snowloader acquired by Public Works Department.
9. Public Works Department housed in new quarters.
10. Repaving of Lisbon Street from Rosedale Street to South Avenue started.
11. Federal Credit Union membership and assets reach new high.
12. Plans formulated for completion of Lewiston Athletic Field.

# Elective and Appointive Officials

<b>MAYOR</b> Louis P. Gagne	<b>CLERK, WATER DIVISION</b> Roland Faucher	<b>DEPUTY CHIEF</b> Ernest J. Verderber
<b>ALDERMEN</b> Arthur T. Hopkins Anthony J. Petropulos Ernest Malenfant Ernest Dionne Ovila J. Lavoie Leo St. Pierre Paul E. Lajoie	<b>SUPERVISOR, PUMPING STATION</b> John A. Sullivan	<b>CLERK</b> Aldorien Landry
<b>CITY CLERK</b> Lucien Lebel	<b>BOARD OF HEALTH AND WELFARE</b> Maurice Fontaine R. R. N. Gould Alberte Sasseville Charles A. Legare Everard B. Whittier (a) Ronaldo E. Cailler (b)	<b>BUILDING INSPECTOR</b> Alfred Malo
<b>COUNSEL</b> Fernand Despins	<b>DIRECTOR</b> Rosario S. Giguere	<b>BOARD OF APPEALS AND EXAMINERS, ELECTRICAL</b> John Gahagan Dominique Moreau Frederick Leblond
<b>BOARD OF FINANCE</b> Mayor, ex-officio Dr. C. Tousignant John A. Finn, Jr. Harold N. Skelton Romeo Bouvier Maurice Cloutier	<b>INVESTIGATOR</b> Romeo R. Lavalliere	<b>ELECTRICAL INSPECTOR</b> Charles Delisle
<b>CONTROLLER</b> Albert A. Parent	<b>HEALTH OFFICER</b> Dr. R. J. Wiseman, Jr.	<b>TRUSTEES OF PUBLIC LIBRARY</b> Mapor, ex-officio Robert J. Rivard Florence L. Judkins Ralph C. Cutler Rosario J. Dionne William S. Provencher Elwood F. Ross
<b>CHIEF AUDITOR</b> Julian W. Deshaies	<b>HEALTH INSPECTOR</b> Pierre Leveque	<b>LIBRARIAN</b> Irma Belleau
<b>TREASURER-COLLECTOR</b> Adrien O. Ancil	<b>PHYSICIAN</b> Dr. Vincent H. Beeaker	<b>BOARD OF REGISTRATION</b> Aime N. Asselin Cora R. Greenleaf Roland Houle
<b>ASSESSORS</b> Ernest Desjardins Cyprien A. Levesque Stephen J. Murray	<b>FARM SUPERINTENDENT</b> Louis Brochu	<b>VETERANS' SERVICE OFFICER</b> Maurice E. Lizotte
<b>BOARD OF EDUCATION</b> Armand G. Sansoucy Eugene J. Cronin Alcide P. Morin Charles Lamey Alton A. Lessard	<b>BOARD OF PUBLIC SAFETY</b> The Police and Fire Commissions, jointly	<b>MUNICIPAL COURT</b> Adrian A. Cote, Judge Harris M. Isaacson, Clerk
<b>SUPERINTENDENT OF SCHOOLS</b> A. Alden Woodworth	<b>POLICE COMMISSION</b> W. T. Warren N. J. B. Martel Frederick A. Hall Cyrille Labranche, Jr. Dominique Dumont	<b>ZONING AND PLANNING BOARD</b> George O. LaRochelle Henry C. Richard George Gibson Louis Pinette Fred McCarthy (e) Jules G. Goudreau (f)
<b>BOARD OF PUBLIC WORKS</b> Bertrand A. Marquis Victor Berube Sarto L. Sasseville James J. Harkins John J. Maloney, Jr.	<b>POLICE CHIEF</b> Thomas E. Johnson (c) Joseph A. Picard (d)	<b>PENSION BOARD</b> Mayor Louis P. Gagne Ovila J. Lavoie John J. Maloney, Jr. Romeo Bouvier Armand G. Sansoucy Robert J. Rivard Alberte Sasseville
<b>DIRECTOR</b> Edgar St. Hilaire	<b>POLICE MATRON</b> Mrs. Irma Michaud	
<b>ASSISTANT DIRECTOR</b> Edmond J. Lambert	<b>SEALER OF WEIGHTS AND MEASURES</b> Carleton Owen	
<b>CHIEF CLERK</b> George Maher	<b>FIRE COMMISSION</b> Walter Haynes Alfred Dutil Joseph Norton Dr. Paul Chevalier Robert W. Bonenfant	
	<b>CHIEF OF FIRE DEPARTMENT</b> Zephirin F. Drouin	

a. Resigned June 14, 1948  
b. Appointed June 28, 1948

c. Died Oct. 25, 1948  
d. Appointed Oct. 29, 1948

e. Resigned Aug. 10, 1948  
f. Appointed Sept. 25, 1948

# *General Government*

The division of the city administration known as general government includes the Mayor, the Board of Mayor and Aldermen, the City Clerk, Corporation Counsel, Board of Registration. Reports of activities of these follow. The powers of the Board of Mayor and Aldermen are limited though it is the legislative body for the city.

## MAYOR AND COUNCIL

Employees 3

Expenditures \$8,255.92

Per capita \$0.21

### REVISE LICENSES

Several new ordinances, perhaps the most far reaching being that to revise the schedule of business license fees, were adopted by the Board of Mayor and Aldermen during the 1948-49 fiscal year. The revision of business licenses brought many previously unlicensed lines under supervision and changed provisions of existing ordinances.

The board was active in plans for completion of the renovated Lewiston Athletic Field and cooperated with the Board of Education and Board of Finance to this end.

### ASSESSMENT HEARINGS

Several public hearings were held on sewer assessments and the board participated in land condemnation proceedings for the Thorne's Corner sewer system treatment plant.

Ordinances establishing loading zones and controlling traffic were enacted.

## *Mayors Since the City was Chartered*

1863-1864	Jacob B. Ham	-1897	Wilbur H. Judkins
1865-1866	William P. Frye	1898	William H. Newell
1867	George H. Pillsbury	1899	George Pottle
1868-1869	Isaac N. Parker	1900-1901	George W. Furbush
1870	William H. Stevens	1902	Daniel J. McGillicuddy
1871	Alonzo Garcelon	1903-1904	William B. Skelton
1872	David Cowan	1905-1906	William A. Webster
1873	N. W. Farwell	1907-1912	Frank A. Morey
1874	H. H. Dickey	1913	William H. Hines
1875-1877	Edmund Russell	1914	Robert J. Wiseman
1878	Jesse S. Lyford	1915-1916	Louis J. Brann
1879-1880	Joseph H. Day	1917-1920	Charles P. Lemaire
1881	Mandeville T. Ludden	1921	William H. Newell
1882	David Farrar	1922-1924	Louis J. Brann
1883	Alonzo M. Garcelon	1925-1929	Robert J. Wiseman
1884	Nelson Howard	1930-1931	Harold N. Skelton
1885	Charles Walker	1932	Henry N. Paradis
1886	David Cowan	1933-1935	Robert J. Wiseman
1887	Daniel J. McGillicuddy	1936-1938	Donat J. Levesque
1888-1889	Horace C. Little	1939	Edward J. Beauchamp (To May 8)
1890	Daniel J. McGillicuddy		
1891-1892	William H. Newell	1939-1940	Fernand Despins
1893	Seth Chandler	1941-1942	Edmond J. Lambert
1894-1897	Frank L. Noble	1943-1944	Jean Charles Boucher
	(John H. Callahan acting)	1945-1946	Alton A. Lessard
		1947-1948	Louis P. Gagne

# CITY CLERK

Employees 4

Expenditures \$15,455.27

Per capita \$0.40

## REVENUE INCREASED

Due in large measure to assignment of new functions particularly issuance of new business licenses and increased contract recording, activities in the city clerk's office show continued acceleration. Revenue produced in the office has more than doubled in the last five years, so that for the 1948-49 fiscal year it hit a record high of \$15,272.33. Last year the figure was \$11,066.55.

The clerk is secretary to the Board of Mayor and Aldermen and as such attends all meetings of that body. He is custodian of city records and is charged with issuance of the various licenses, including State dog, hunting and fishing, the preparation and disposition of all insanity hearings, administering and recording oaths of office, publication of ordinances and public notices, and compilation of vital statistic records.

## NEW VOTING RECORD

As superintendent of elections, the clerk had responsibility for the five elections during the year. At the State primary 9,237 ballots were cast, 13,427 at the State election, 15,012 at the presidential, 12,622 at the city election which saw seven mayoralty candidates, and 13,448 ballots were cast in the run-off election. The latter is a record for a city election.

Revenue produced by the clerk's office for the past five years: \$6,694.33 in 1944, \$7,556.44 in 1945, \$9,608.01 in 1946, \$11,066.55 in 1947 and \$15,272.33 in 1948.

Briefly summarized, the activities of the office included:

*Recordings* — Board meetings 434, births 2,027, marriages 564, deaths 717, delayed returns of births 29, depositions correcting vital statistic records 108, oaths 178, business contracts 3,537.

*Records* — Certified copies of vital statistic records 1,904, birth, marriage and death cards 3,200.



The City Clerk's office is one of the busiest departments in the City Building.

## CORPORATION COUNSEL

Employes 1

Expenditures \$2,067.50

Per capita \$0.05

The corporation counsel drafted legislative acts to authorize the city to establish or participate in the employes' contributory retirement pension system, to create a municipal planning board, and several amendments to the city charter. He also prepared several new ordinances and amendments to others.

MANY  
LEGAL  
OPINIONS

The official advised and conferred frequently with the tax collector, assessors, city clerk and other officials, boards and commissions on various city problems. He was called upon many times for legal opinions and to investigate liability in claims against the city.

In all litigation, the city was represented by this official. He spent considerable time instigating tax suits and several settlements were obtained.

## VETERANS SERVICE OFFICER

AID  
TO  
VETERANS

The veterans' service officer is primarily responsible for and concerned with questions which may arise concerning the rights, benefits and privileges to which not only veterans but also their families and survivors are entitled. Lewiston has between 5,000 and 6,000 veterans and each has his own problems.

Through this office were handled 2,406 personal contacts, 405 telephone calls for information, 50 trips to veterans hospitals, 135 communications to various governmental agencies, 151 calls for housing, 180 pension claims filed or reopened and 145 hospitalization claims forwarded to VA agencies.

# BOARD OF REGISTRATION

Employees 3

Expenditures \$9,296.29

Per capita \$0.24

1,166  
NEW  
VOTERS

Due to increased interest in politics and the five elections which took place during the year, the Board of Registration reported a net increase in voters of 1,166. This is the largest net yearly increase in ten years and the second largest in the history of the city. Total registration is 19,867, composed of 10,254 men and 9,613 women.

In addition to its work preparing for the elections, board members started a project to bring naturalization records into desired form on a card-indexed file. This will be a time saver for the public and more convenient.

Throughout the year, the findings of the yearly city census were checked against the voting lists to insure an up-to-date accurate list of Lewiston voters.

The board's list of voters includes:

<i>Wards</i>	<i>Men</i>	<i>Women</i>	<i>Total</i>
One	1,270	1,168	2,438
Two	1,450	1,531	2,981
Three	1,362	1,127	2,489
Four	1,145	1,321	2,466
Five	1,494	1,431	2,907
Six	1,719	1,473	3,192
Seven, P1	1,023	892	1,915
Seven, P2	791	688	1,479
Totals	10,254	9,613	19,867

## PENSION BOARD

GRANT  
TWO  
PENSIONS

The Pension Board held only two meetings during the year, and granted retirement benefits to Napoleon Gauthier and Wilfred Mailhot, veteran employes of the Public Works Department. The board is composed of one member of each of the other city boards.

## Finance

The finances of the city are administered by the Board of Finance of which the mayor is chairman ex-officio. The board has general supervision over the several departments on disbursement and receipt of funds. All transfers of funds within departments must be approved by the Board of Finance and in turn recommended to the Board of Mayor and Aldermen.

Under direct jurisdiction of the board are four departments: Auditor, treasurer-tax collector, controller and board of assessors. These officials are appointed by the Board of Finance.

### Chief Auditor

Employs 4

Expenditures \$12,176.01

Per capita 0.32

Few cities the size of Lewiston can boast of the modern accounting system in use in the office of the chief auditor. The latest of accounting machines and other office equipment enables this department to produce a great amount of work with a minimum of help and a maximum of efficiency.

#### LATEST EQUIPMENT

The chief auditor is the finance officer and budget director for the city. It is his duty to supervise a continuous audit of all city accounts and in this office are centralized control of all receipts and expenditures as well as budgetary and tax accounts. He is also responsible for installation of all new systems pertaining to the finances of the various departments. During the coming year a new duty, that of water division billing, will be assumed by this office.

#### MODERN PAYROLL SYSTEM

A modern payroll system takes care of compensation for nearly 500 employes and in connection with this a new time clock was installed in the public works department. Plans are underway for installation of a cost system in that department. Records, checks, and other documents are micro-filmed each year and filed in fireproof cabinets. A complete financial record of the city's activities will be found elsewhere in this report.

Checking  
Machine





## CONTROLLER

Employees 2

Expenditures \$8,738.23

Per capita \$0.23

SAVINGS  
ON  
DISCOUNTS

Through constant check on purchases by the office of the controller, the city realized cash discounts of \$1,782.82 and trade discounts of \$5,507.46 on purchases totaling \$351,497.25. Requisitions numbered 6,543 of which 43 were voided, resulting in 6,600 purchase orders.

MAJOR  
SUPPLIES  
ON  
BIDS

The controller, who is executive officer of the Board of Finance, checks budgeted disbursements to obtain highest quality of supplies, equipment and services and all departments make requisitions through this officer. A constant check is kept for duplication and of stock on hand in the various departments. Bids were procured on all major items and among the items purchased through bids were 115,340 gallons of gasoline, 91,944 gallons of tar and asphalt, 22,133 feet of sewer pipe, 4,763 feet of water pipe, 300 cords of wood, 1,787 tons of coal and 191 barrels of cement.

## TREASURER-COLLECTOR

Employees 5

Expenditures \$14,800.28

Per capita \$0.38

HIGHEST  
COMMIT-  
MENT

With the tax rate at 45 mills, an increase of one mill over the previous year, the 1948-49 tax commitment of \$1,682,368.24 was the largest in the city's history. Even with this increase, the collection on March 31 was 98.85%, accounting for \$1,662,878.11. Percentage-wise, this was slightly less than the previous year.

The office of the treasurer-collector handled the following accounts: Poll taxes 11,365, automobile excise 9,574, real estate 7,929, personal property 1,408, besides many tax liens and rentals of City Hall and Armory.



### \$38,287 METER REVENUE

This office has charge of revenue produced by parking meters and during the fiscal year this totaled \$38,287.28 in coins to be sorted and deposited. City building mail is also routed through this office.

# Credit Union

At the end of the fiscal year, the Lewiston Municipal Federal Credit Union was continuing as a progressive organization. There are 361 members, an increase of nearly 100 over the previous year, with accumulated savings of \$39,593 which is nearly \$14,000 more than a year ago.

## 101 NEW LOANS

The organization works under a Federal charter and is under Federal supervision. The service offered is indicated when it is realized that 101 members had loans outstanding on March 31, compared to 62 the previous year.



# BOARD OF ASSESSORS

Employees 5

Expenditures \$17,669.53

Per capita \$0.46

## INCREASED VALUA- TION

The Board of Assessors found total valuation for tax purposes of \$36,610,252, an increase of \$1,025,721 above the previous year, and \$2,146,219 above the figure of two years ago.

The figures show a valuation of \$28,606,047 on real estate and \$8,004,205 on personal property, both figures representing increases of \$823,226 on the former and \$202,495 on the latter.

An increase of one mill in the tax rate produced actual tax revenue of \$1,662,878.11 up to the end of the fiscal year. The tax rate represents an increase of six mills over 1946.

## FIND 11,358 POLLS

Polls numbered 11,358, an increase of 193, and an increase of 142 over two years ago. During the year the assessors recorded 1,108 real estate transfers.

A new system of census taking was established through use of police officers in their off-duty hours. The results were gratifying and the same system will be kept in operation next year.

Valuation figures for the last five years are:

Year	Real Estate	Personal	Total	Tax Rate
1944	\$30,292,857	\$3,461,045	\$33,753,902	38
1945	30,265,270	3,804,820	34,070,090	37
1946	27,459,628	7,004,405	34,464,033	39
1947	27,782,821	7,801,710	35,584,531	44
1948	28,606,047	8,004,205	36,610,252	45

Plotting  
A  
Survey



# Police Department Activities



Marking  
Traffic Lanes

Detective Bureau



Detective's Comparative Microscope



Police Shooting Range



New Equipment  
Patrol and Truck

# Public Safety

The division of public safety is composed of the police and fire departments, and included with these are the sealer of weights and measures, who works with the police department; and the municipal court. Commissioners of the fire and police departments meet jointly as the Board of Public Safety and this board is charged with responsibility for all measures for the safety of citizens.

## POLICE DEPARTMENT

Employees 54

Expenditures \$183,132.67

Per capita \$4.74

JUVENILE  
DELIN-  
QUENCY  
IS LOW

The police department is proud of the part it has played in the marked decrease in juvenile delinquency in Lewiston in the last few years. Much credit is given to the Police Athletic League which is carried on by the police officers and volunteers.

Administration of the department changed hands due to the death of Chief Thomas E. Johnson. Joseph A. Picard, senior captain, was named acting chief. A new captain and a lieutenant also were named.

The department is composed of 40 patrolmen, one sealer of weights and measures, a deputy sealer, matron, clerk, two lieutenants, three captains and the chief.

During the year the department acquired a new combination ambulance-patrol, five cruiser cars and a new pick-up truck. Use of space at the Park Street building for storage purposes was made available to the department. The detective bureau moved into new quarters in the basement of city building.

A total of 10,291 arrests were made of which 24 were juveniles. Last year the figures were 7,678 arrests with 31 of them juveniles.

The department cleared 40.20% of known (K) criminal cases.

GET  
NEW  
EQUIP-  
MENT

	1946		1947		1948	
	K	C	K	C	K	C
CRIMINAL HOMICIDE						
MURDER AND NON-NEGLIGENT						
MANSLAUGHTER	0	0	0	0	0	0
MANSLAUGHTER BY NEGLIGENCE	0	0	0	0	2	2
RAPE	1	1	2	1	0	0
ROBBERY	4	0	8	3	4	2
AGGRAVATED ASSAULT	0	0	2	2	3	3
BURGLARY	70	35	117	54	104	48
LARCENY						
VALUE \$50 AND OVER	27	11	52	16	46	14
VALUE UNDER \$50	212	88	257	100	196	71
AUTO THEFTS	46	10	22	10	33	16
	—	—	—	—	—	—
TOTALS	360	145	460	186	388	156
PERCENTAGE CLEARED BY ARREST	40.21%		40.43%		40.20%	



## MUNICIPAL COURT

Employes 3

Expenditures \$6,728.15

Per capita \$0.17

HANDLE  
CLINIC  
CASES

The purpose of municipal court is not only to collect fines and administer sentences but also to help the unfortunate and to attempt to retain families as such, and to this end The Court handled approximately 500 cases through clinics. Through cooperation of police and The Court, the city has the lowest ratio of juvenile delinquency of any city of the size in New England.

The following cases were handled by the court during the fiscal year: Criminal 1,499, civil 201, small cases 138, forcible entry and detainers 56, juvenile 228 of which 28 were acted on with warrants and 200 in a clinic manner, non-support criminal 42, non-support, civil 8; Probation Cases 408.

COLLECT  
\$8,439

During the year the court collected a total of \$8,439.92 of which \$5,695.58 was paid to the county, \$1,427.40 to the city on traffic tags and \$1,406.94 was collected by the probation officer.

## FIRE DEPARTMENT

Employes 59

Expenditures \$183,271.37

Per capita \$4.75

FIRE  
LOSS  
DECREASES

Total fire loss in Lewiston during the 1948-49 fiscal year decreased \$7,023.48 from the figures of the previous year. According to department figures, the fire loss was \$158,738.40, or a per capita loss of \$3.307. The loss on buildings was placed at \$70,502.23, on contents \$73,791.99, on uninsured contents and buildings \$10,776.50 and the loss by exposure was \$3,667.68.

Buildings involved in fires were valued at \$1,392,016.57 and contents \$695,616.39. There was no loss of life due to fire but 62 persons were injured at fires.

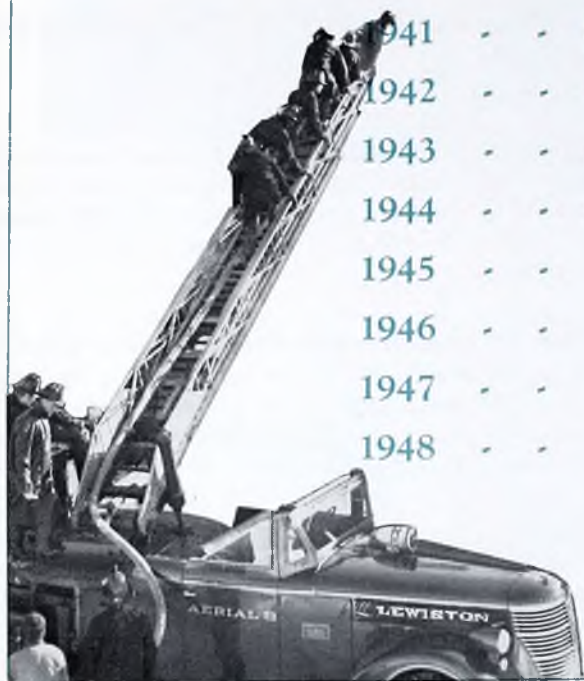
The department responded to 792 alarms, 601 of which were for fires. Of these 203 were brush and grass, 103 chimneys, 39 oil burners, 42 defective wiring, 29 careless smoking. The firemen responded with aid to surrounding towns on 26 occasions and there were 18 emergency and life saving calls.

792  
ALARMS

During the year the department continued its program of rigid inspections, especially of mercantile buildings, baby homes and apartment dwellings. A total of 1,055 inspections were made.

# FIRE LOSSES

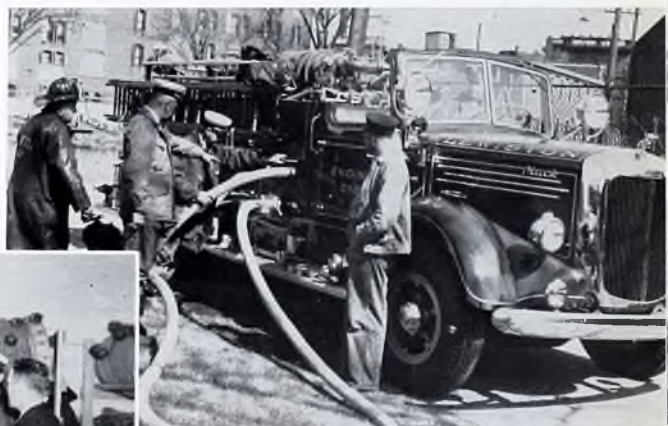
1941	-	-	\$ 70,384
1942	-	-	75,450
1943	-	-	97,446
1944	-	-	73,555
1945	-	-	241,306
1946	-	-	128,224
1947	-	-	165,761
1948	-	-	158,738



Instructions on Handling  
Latest Equipment

Fire Drillmaster

Instructing in Use of Self  
Generating Oxygen Masks





# CONSTRUCTION AND INSPECTION

Employees 5

Expenditures \$897.17

Per capita \$0.03

## 600 BUILDING PERMITS

Construction permits issued by the building inspector increased more than a half million dollars in value from the previous year. The inspector reported issuance of 600 permits for a total value of \$2,446,650, an increase of \$548,185 over the 1947-48 year.

Of these, 34 were for construction in excess of \$10,000, with that for the new F. W. Woolworth Co. store the largest at \$327,000. Second largest was the addition to the Central Maine General hospital at \$261,000. Six of the permits were for construction in excess of \$20,000.

In addition to permits for new construction, three were issued for oil storage tanks above ground and for three below ground level, ten for demolishing buildings, 13 to move buildings, 19 for electrical signs, and eight for roof repairs.

## 256 LICENSED ELECTRI- CIANS

The Board of Electrical Examiners held 12 sessions and gave examinations to 32 applicants. It granted a total of 256 licenses during the year. Of these 67 were masters, 97 journeymen and 92 servicemen.

The wiring inspector made 1,112 inspections. Of these 221 were new houses and services, 263 renewed services, 230 alterations and additions, 210 power oil burners, 65 electric ranges, 47 hot water heaters, 46 motors, 17 temporary services, 10 electric signs and three radio antenna installations.



# Education

Control and management of all schools, their repair and maintenance while in use for school purposes, is vested in the Board of Education. Also centered here is control of the Memorial Armory, used in part for school purposes; the Park Street building where the vocational machine shop course is taught; and recreation, which includes the Summer playground program and care and custody of athletic fields.

Employes 140

Expenditures \$453,952.85

Per capita \$11.76

A total of 3,372 students in Lewiston public schools is shown in the last official school census, and of this number 1,149 are in the four high school classes and 2,223 in the grades, from kindergarten through the eighth grade. The education of these children is entrusted to 134 professional employes, many of whom possess training in excess of the basic requirements.

## 117 CLASSROOM TEACHERS

The personnel of the Lewiston school department consists of 117 classroom teachers, five supervisors, 12 in the administrative classification. In addition there are 14 full-time and three half-time employes in the custodial division.

In addition to regular academic courses, art and music are offered in the grades, with domestic art and manual training added in the seventh and eighth grades. In the high school, in addition to general and college preparatory courses, students are offered courses in commercial training, industrial arts, home economics, metal shop work, mechanical drawing and electricity. Music and art are offered to those with special aptitude or interest.

## TEACHER- TRAINING INSTITU- TIONS

The high school is listed as an "A" type school and both this school and the Jordan school will be used during the coming year as teacher-training institutions by State and private colleges for students preparing for the teaching profession.

Aptitude testing of students has been continued and shows the accomplishments of local students and the quality of the teaching personnel when measured against National norms. The evening school offers an opportunity to adults to seek better education. The Board of Education administers the veterans' courses in agriculture for the Veterans Administration.

For the year, the school department was operated on a \$430,618.59 budget.

# 1948 Tax Rate in Maine Cities

PRESQUE ISLE	91
EASTPORT	88
CALAIS	80
ELLSWORTH	67
BELFAST	66
SACO	65
HALLOWELL	61
OLD TOWN	59
BREWER	56
SO. PORTLAND	56
BANGOR	55
AUGUSTA	55
GARDINER	55
PORTLAND	55
ROCKLAND	52
BATH	51
AUBURN	50
WESTBROOK	49
WATERVILLE	45
<b>LEWISTON</b>	<b>45</b>
BIDDEFORD	39

## RECREATION

### NEW RECREA- TIONAL PROGRAM

A new recreational program for Lewiston citizens was being formulated as the fiscal year closed. This will include a full time director of recreation to head the new program, which in the past has consisted mainly of the Summer playgrounds. It is planned to place the new program on a year around basis.

The city has maintained three playgrounds and three additional lots on school grounds. The main athletic field is undergoing reconstruction and is to be ready for use this Fall. The budget for recreation has increased from \$5,000 to approximately \$20,000. Plans are being formulated for a new playground on Bates Street and for new wading pools for the younger children.

Recreational personnel is selected on the basis of educational qualifications. Young people who deal with children professionally or as a life's career are given preference.



Left: Grading  
Athletic Park

Football Field, L. A. P.



# PUBLIC LIBRARY

Employees 6

Expenditures \$17,024.96

Per capita \$0.44

## CIRCULATION DECREASES

Circulation at the Lewiston Public Library has shown a decline in the last four years from 70,956 for the 1945-46 fiscal year to 53,570 in 1948-49. This latter figure represents a decrease of 7,818 in the last year.

The library, in its 46th annual report, places its monthly average circulation at 4,464 volumes out of the 62,347 books on hand at the start of the fiscal year. A total of 1,184 volumes were added during the year, 1,032 by the city appropriation, 78 by gifts and 74 by the State stipend. At the close of the year, the library contained 63,531 volumes.

## 1,503 TOTAL REGISTRATIONS

Daily average circulation was 177, juvenile circulation 9,415, books in the French language 8,722. Total registrations are 1,503, with 1,302 new registrations and 201 non-resident registrations. The library has 76 gift magazine subscriptions, 71 paid magazine subscriptions and 17 newspaper subscriptions.

A classification of circulation shows: General works and periodicals 111, philosophy 327, religion 223, sociology including education 585, language 118, science 324, useful arts 662, fine arts 796, literature 1,136, history and travel 1,735, biography 1,758, fiction 27,593, French fiction 7,875, French non-fiction 846, juvenile fiction 6,649, juvenile non-fiction 2,542, and juvenile French 290.



# Public Works Department

The Department of Public Works is charged with responsibility for construction, maintenance, and repairs of streets, bridges, sidewalks and sewers; lighting of streets, public buildings and places; water supply; control and maintenance of public parks and lands, and repairs of all public buildings except those occupied by the school department and fire department during their actual period of occupancy; and disposal of ashes and rubbish.

Employees 138

Expenditures \$637,533.51

Per capita \$16.52

## MOVE INTO NEW BUILDING

After waiting several months, the Public Works Department moved into its new building in September, 1948, and started demolishing the old Bates Street structures. Before officially moving to its new Willow Street location, the department did considerable grading and surfacing about the building. A start also was made on erection of additional storage sheds. A wire fence, salvaged from the Lewiston Athletic Field regrading project, was installed around part of the lot.

Total expenditures under the Public Works Department increased \$112,026.26 over the previous year and \$218,015.77 over two years ago.

## REBUILD LISBON STREET

Under the State Aid program, the department started reconstruction of lower Lisbon Street. A stone base penetrated with tar was laid for a distance of 724 feet from Prospect Avenue to South Avenue at a cost of \$5,758.48, one-half of which was paid by the State.

Due to an open Winter, snow removal costs dropped from a year ago, the decrease being from \$60,053.27 to \$42,505.58. Waste removal costs increased from \$39,127.71 to \$42,505.58.

In surface treatment of roads and highways, the department used 60,729 gallons of tar, 2,587 cubic yards of screened gravel and 354 cubic yards of crushed stone. Webster Street, from Pine Street to East Avenue, was recoated at a cost of \$2,557.41; Sabattus Street, from Main to College Streets, was recovered at a cost of \$1,123.49, and Bartlett Street Extension, from Birch to Willow Streets, was repaired for \$1,783.67.

## REBUILD BRIDGES

Two bridges were rebuilt at a cost of \$10,860.70. These were the No. 1 and No. 2 Cross Canal bridges on Lincoln Street. Minor repairs were made to twelve small bridges for \$2,269.80. Work on the Bridge Street bridge, closed all Winter, was resumed this Spring. The bridge is being completely rebuilt.



In caring for the city's many trees, the department spent \$740.13 for spraying, \$1,926.56 for trimming and removal of stumps, and \$2,620.60 for cutting brush along country roads.

Little work was done on sidewalk construction. Only 416 square yards of concrete walks, 579 square yards of asphalt walks were built and 1,079 square yards of asphalt walks were recoated. At a cost of \$2,120, the department used 814 cubic yards of cinders on walks on Bartlett Street Extension, Willow, Lisbon, Sabattus, Bardwell, Franklin, Stewart, Farwell, Tampa and Orange Street Extension.

Under the sewer assessment plan, new sewers were built on Ryder, Charles, Orange Street Extension, East and Boston Avenues, Mower Avenue, Allen Avenue, Morris and Russell Streets, South Avenue and Lisbon Street and in the Thorne's Corner system area. Filter beds and the sewerage treatment tank for the Thorne's Corner sewer system were completed by Camillo Profenno Construction Co.

The street light department installed 74 units as replacements and 11 fixtures at new locations. Twelve new ornamental poles and 24 luminaries were installed on the Main Street traffic islands.

New water mains were installed on 31 streets, relaid on seven. New services numbered 223 and there were 41 relaid. Two new hydrants were installed and five repaired.

A total of 2,059,761,400 gallons of water was pumped through the pumping station, a decrease of 237,905,000 gallons. Daily average consumption dropped from 6,277,777 to 5,643,182. To the total was added 13,227 pounds of chlorine gas, or 6.42 pounds per million gallons of water.

## SIDEWALK WORK

## DECREASE IN WATER CONSUMP- TION

New PWD Building



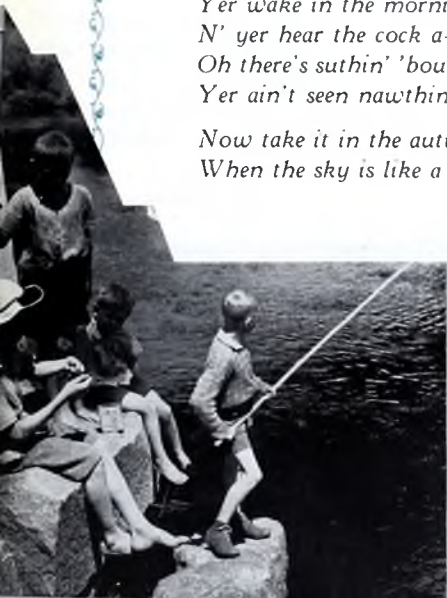
Stock Room







*Yer ain't seen nawthin', feller, if yer've never been ter Maine,  
There's suthin' 'bout it gets yer, like the sunshine after rain,  
It's the nearest place ter heaven that yer'd ever want to know—  
Yer can't duplicate the scen'ry no matter where yer go.  
The long hills, n' the mountains, the valleys, n' the streams,  
Yer've never seen such beauty, unless it's in yer dreams.  
Fer instance in the springtime, when nature spreads its sheen,  
N' as far as yer can see the world's alive with green—  
Sorta makes yer want ter go a-fishin' where the salmon n' the trout  
Are a-hankerin' ter have yer go n' fetch 'em out.  
Even then yer ain't see nawthin' till summertime comes 'round,  
N' the days are warm, n' the nights are short, n' 'bout the only  
sound  
Is the wind a-swishin' thru the pines, the surf that pounds the  
shore.  
The hounds a-bayin' in the hills—a pleasant sound—what's more  
Yer wake in the mornin' n' the meader's wet with dew,  
N' yer hear the cock a-crowin' n' yer feel like crowin' too  
Oh there's suthin' 'bout it gets yer like a beautiful refrain—  
Yer ain't seen nawthin', feller, if yer've never been ter Maine.  
Now take it in the autumn, there's some that like it best  
When the sky is like a poem when the sun sets in the west.*



ne . . .

' the world's bedaubed with colors, scarlet, green n' gold  
' the moon's so red it scares yer, n' the first hint of the cold  
omes a-creepin' in n' nips yer, sorta makes yer wanta shout,  
' yer thank God that yer living n' git yer rifle out,  
' yer tune 'er up, git ready fer the pleasantest of thrills,  
' yer off a-fore the sun-up, a-headin' fer the hills.  
m gonna tell yer, feller, there's nawthin' quite so fine,  
s a-trampin' on the trails when the air is charged with wine.  
' the waterways are flashin' like mirrors in the sun.  
' yer pullin' on yer pipe n' a-grippin' on yer gun.  
' yer watch the squirrels caper as they leap from tree ter tree,  
' the geese go by at sundown a-headin' out ter sea- - - -  
then a-fore yer know it, winter's on the way,  
' the lakes are frozen solid, n' the geese have left the bay.  
m gonna tell yer, feller, it makes yer feel quite good  
Then yer larder's filled with vittles, n' yer woodshed's filled with  
wood.  
' the countryside is blanketed beneath the mounds so white,  
' the stars flash like electric in the sharpness o' the night.  
h there's suthin' about it gits yer like a beautiful refrain—  
er ain't seen nawthin', feller, if yer've never been ter Maine.

—PARKE GRINDELL



## Public Works Department, Cont.

Generation of electric power at the hydro-electric station increased from 3,217,900 KWH to 3,248,900. Of this 1,597,700 KWH was consumed pumping water, 1,669,500 for street lights, and turned over to the Central Maine Power Co. were 708,500 KWH. The city purchased 726,800 KWH from the power company and the concern supplied 688,927 KWH to public buildings.

As new equipment, the department obtained a new snow loader, compressor, asphalt distributor, coupe and five trucks in addition to much smaller equipment.



Waste Collection



Garbage Collection



# Health and Welfare

This department of city government, broken down into two divisions, under individual directors, cares for the public health and welfare of the city. The two divisions are closely related and many of their functions are interlocking. The accounts are broken down into numerous subdivisions, making it nearly impossible to report activities of either division separately.

Employees 5

Expenditures \$14,772.54

Per capita \$0.38

## HEALTH DIVISION

INFANT  
MORTALITY  
AT NEW  
LOW

Infant mortality reached the all time low of 20 per 1,000 births. The general death rate is higher and the birth rate lower than for the previous year. The general death rate rose from 8.4 to 9.7 and the birth rate dropped from 24.5 per 1,000 population to 22.5. For the fourth time in the last seven years there were no maternal deaths.

For the first time in the history of the city there were no cases of diphtheria during either the calendar or fiscal years. The last case occurred in May 1947. During the year the health officer recorded 19 cases of tuberculosis, 35 of scarlet fever and 363 of measles.

Heart disease continues as the leading cause of death, followed by cancer, cerebral hemorrhages, nephritis, violent accidents, pneumonia, tuberculosis, diabetes mellitus and cirrhosis of the liver in that order. Prematurity heads the infant mortality list. The tuberculosis death rate per 1,000 deaths increased from 22.6 to 25.5 and the cancer rate dropped from 184 to 136.

The health officer recorded 1,996 births, 38 still births and 734 deaths.

On file are complete reports of the public health nurses, sanitary inspector and the plumbing inspector.

# Mortality Rate

	Infant Mortality Per 1,000 Births	Maternal Death Rate Per 1,000 Births	General Death Rate Per 1,000 Pop.	State Death Rate Per 1,000 Pop.	National Death Rate Per 1,000 Pop.	Birth Rate Per 1,000 Pop.
1936	86.2	3.0	12.7	13.3	11.5	17.9
1937	81.1	8.5	12.6	13.4	11.2	18.8
1938	50.3	10.6	11.1	12.4	10.6	17.9
1939	66.1	3.0	12.1	10.9	10.6	18.4
1940	53.2	1.4	10.3	12.5	10.8	17.3
1941	62.3	7.2	10.9	12.4	10.5	17.9
1942	60.7	none	10.0	12.2	10.4	19.7
1943	58.0	3.3	11.5	13.2	10.9	22.7
1944	56.0	1.2	12.0	12.3	x	20.5
1945	47.0	none	9.8	12.7	x	18.8
1946	38.0	none	9.5	x	x	22.0
1947	34.0	1.8	8.4	11.1	x	24.5
1948	20.0	none	9.7	x	x	22.5

x—rates not available.

## Welfare Division

Employees 17

Expenditures \$168,340.37

Per capita \$4.36

### WELFARE BUDGET OVER- DRAWN

Due to a decrease in employment, the welfare division account was overdrawn \$18,041.42. The division handled a maximum of 220 cases or 580 persons, the minimum was 146 cases, 337 persons, and the average welfare load was 179 cases composed of 438 persons.

Local welfare cost was placed at \$68,183.25, resulting in an overdraft of \$16,521.42. The local cost is an increase of \$18,439.54. Mother's Aid and the Dependent Children showed a balance of \$7,232.34. Due to the city from the State is \$2,915.02 and from the outside towns, \$644.09.

### \$8,969 FARM SALES

As did several other accounts under the welfare division, the budget account for the city farm was overdrawn. Expenditures totaled \$27,338.69. This represents an overdraft of \$3,009.31. City farm revenue was \$8,969.45, a decrease of \$14,364.32 from a year ago.

The farm cared for a maximum of 47 inmates. The minimum number was 32 and the average, 37.



School Nurse Checking  
Teeth of School Children

## Where the Money Came from

Taxes	\$1,675,750.08
Water Rentals	152,357.93
School Grants	75,831.99
Miscellaneous	156,731.62
Stock, Taxes, Bank Te. R.R.	27,499.60
Auto Excise Tax	105,786.92
City Farm Produce	8,969.45
Court Fees	11,965.07
Parking Meters	20,000.00
Fees, Licenses, Recording	19,529.51
Charity Reimbursements	18,714.80
Sale of Land, Prop. & Equip.	1,703.64
Rentals	10,405.00
<b>Total</b>	<b>\$2,285,245.61</b>
Plus	
Cash Bal. - Mar. 31, 1949	116,951.89
<b>Total</b>	<b>\$2,402,197.50</b>

\$2,402,197.50

## How it was Spent

Education	\$ 470,977.81
Public Works	637,533.51
State Tax	274,126.83
Public Safety	367,301.21
Debt Service	140,900.74
Health & Welfare	183,112.91
General Government	267,708.86
County Tax	63,497.28
Miscellaneous Expenses	461.42
<b>Total</b>	<b>\$2,405,620.57</b>
Plus	
Cash Balance End of Year	
(Deficit)	3,423.07
<b>Total</b>	<b>\$2,402,197.50</b>

YOUR TAX MONEY

# *Your* **TAX DOLLAR**



1948-1949

PUBLIC WORKS \$ .2650

EDUCATION .1958

PUBLIC SAFETY .1527

STATE TAX .1140

HEALTH and WELFARE .0762

DEBT SERVICE .0586

GENERAL GOVERNMENT .1113

COUNTY TAX .0264

---

---

TOTAL \$ 1.00

# Annual Outside Audit

For the first time under the new charter, Lewiston completed the fiscal year with a deficit. At the close of the 1948-49 fiscal year, operations showed a net deficit of \$3,423.07 according to the annual outside audit. The city started the year with a cash surplus of \$116,951.89. During the year the bonded indebtedness decreased from \$1,236,000 to \$1,130,000 and the borrowing capacity rose from \$643,226.50 to \$700,512.60.

The annual outside audit was made in compliance with State law.

Appropriations and credits totalled \$2,353,412.78 an increase from a year ago of \$216,836.41, and expenditures rose to \$2,405,159.15, an increase of \$291,246.90. Total revenues were \$2,128,932.77 against estimated receipts of \$2,127,348.49. Current real and personal taxes brought \$1,630,079.71, or \$17,379.78 below estimates. State school aid of \$75,831.99 was \$3,831.99 above estimates. Motor vehicle excise taxes amounted to \$105,786.92, or \$20,786.92 above the estimate.

Of the tax commitment of \$1,682,368.24, there was \$19,490.13 outstanding at the close of the fiscal year.

Comparison of the tax collector's accounts for the past four years:

	1948-49	1947-48	1946-47	1945-46
Commitment and Supplements	\$1,682,368.24	\$1,599,289.72	\$1,377,966.07	\$1,287,257.67
Cash Received	1,661,081.61	1,580,482.88	1,353,370.65	1,265,421.16
Abatements and Credits	1,796.60	1,253.22	2,312.97	1,177.14
Total	\$1,662,878.11	\$1,581,736.10	\$1,355,683.62	\$1,266,598.30
Uncollected at end of year	19,490.13	17,553.62	22,282.45	20,659.37
Less Real Estate subject to liens	13,268.03	14,220.42	13,755.95	14,755.87
Uncollected personal and poll taxes at end of year	6,222.10	3,333.20	8,526.50	5,903.50

Total welfare cost was placed at \$107,478.29. Of this, net cost of local welfare was \$93,710.63, and outside cases, including both State and outside town aid, was \$22,468.93. The net cost of local welfare represents an increase of \$21,223.82.

During the fiscal year, there were 2,147 cases, representing 5,251 persons, handled through the welfare division. Of this number, 3,407 were local persons.

Due the city from the State was \$2,915.02 and from outside towns \$644.09.

City farm sales amounted to \$8,969.45, a decrease of \$14,363.32. Cost of operating the municipal store was \$3,156.96, or \$476.41 above a year ago.

Expenditures in the school department rose from \$407,598.43 a year ago to \$470,977.81.



COMPARATIVE BALANCE SHEET

ASSETS

	MARCH 31st		MARCH 31st			
	1949	1948	INCREASE	DECREASE		
CASH						
In Depositories	\$ 3,423.07	\$ 116,951.89	\$	\$120,374.96		
Petty Cash	995.00	985.00	10.00			
Permanent Improvement Fund	8,059.36	86,132.53		78,073.17		
Parking Meter Fund	4,040.82	3,703.54	337.28			
TOTAL CASH	\$ 9,672.11	\$ 207,772.96	\$ 347.28	\$198,448.13		
ACCOUNTS RECEIVABLE						
Water Division	\$ 789.80	\$ 1,069.42	\$	\$ 279.62		
State of Maine—Welfare	2,915.02	3,223.35		308.33		
Outside Towns—Welfare	644.09	717.29		73.20		
Sewer Assessments	5,913.48	2,350.68	3,562.80			
Public Work—Receivable	318.24	985.59		667.35		
Due From Meter Fund	-0-	20,000.00		20,000.00		
TOTAL ACCOUNTS RECEIVABLE	\$ 10,580.63	\$ 28,346.33	\$ 3,562.80	\$ 21,328.50		
TAXES RECEIVABLE						
Current Year	\$ 19,490.13	\$ 17,553.62	\$ 1,936.51			
Prior Years	141,042.09	140,998.20	43.89			
TOTAL TAXES RECEIVABLE	\$ 160,532.22	\$ 158,551.82	\$ 1,980.40			
TAX DEEDS AND LIENS	\$ 5,699.54	\$ 6,600.21	\$	\$ 900.67		
TAX ACQUIRED PROPERTY INVESTMENT	\$ 3,153.86	\$ 1,696.25	\$ 1,457.61			
	\$ 225,000.00	\$ 225,000.00				
PROPERTY DEEDED TO CITY OF LEWISTON	\$ 825.79	\$ 825.79				
FIXED ASSETS	\$3,264,881.72	\$3,264,881.72				
TRUST FUNDS	\$ 6,286.75	\$ 6,280.27	\$ 6.48			
TOTAL ASSETS	\$3,686,632.62	\$3,899,955.35	\$ 7,354.57	\$220,677.30		

LIABILITIES

	MARCH 31st		MARCH 31st			
	1949	1948	INCREASE	DECREASE		
CURRENT LIABILITIES						
Accounts Payable	\$ 1,482.16	\$ 1,430.91	\$ 51.25			
Bonds Maturing Within Year	109,000.00	106,000.00	3,000.00			
TOTAL CURRENT LIABILITIES	\$ 110,482.16	\$ 107,430.91	\$ 3,051.25			

COMPARATIVE BALANCE SHEET

LONG TERM LIABILITY

Bonds Payable—				
Beyond Year	\$ 1,021,000.00	\$ 1,130,000.00		\$ 109,000.00
RESERVE FOR DE-				
LINQUENT TAXES	\$ 139,633.29	\$ 139,333.05	\$ 300.24	
TRUST FUNDS	\$ 6,286.75	\$ 6,280.27	\$ 6.48	
SURPLUS INVESTED				
IN FIXED ASSETS	\$ 3,264,881.72	\$ 3,264,881.72		
NET DEBT	\$ 855,651.30	\$ 747,970.60	\$ 107,680.70	
TOTAL LIABILITIES	\$ 3,686,632.62	\$ 3,899,955.35	\$ 111,038.67	\$ 109,000.00

ANALYSIS OF TAX COLLECTOR'S CASH RECEIPTS

YEAR - APRIL 1st, 1948 to MARCH 31st, 1949

REAL ESTATE PERSONAL AND POLL TAXES

YEAR 1948				
Real Estate	\$ 1,274,059.04			
Personal	356,020.67			
Poll	31,001.90			
			\$ 1,661,081.61	
YEAR 1947				
Real Estate	\$ 12,453.72			
Personal	1,042.90			
Polls	1,143.00			
			14,639.62	
YEAR 1946				
Personal	\$ 10.85			
Polls	9.00			
			19.85	
YEAR 1945 - POLL			3.00	
YEAR 1944 - POLL			6.00	
				\$ 1,675,750.08
INTEREST AND COSTS - RECEIPTS				1,828.57
EXCISE TAX RECEIPTS				105,786.92
TOTAL TAX COLLECTOR'S CASH				
RECEIPTS FOR YEAR DEPOSITED				
CITY'S COMMERCIAL ACCOUNT				
LEWISTON TRUST COMPANY				\$ 1,783,365.57

ANALYSIS OF TAX DEEDS AND LIENS  
YEAR—APRIL 1st, 1948 to MARCH 31st, 1949

BALANCE - OUTSTANDING APRIL 1st, 1948		\$6,600 21
ADD - 1947 Taxes Converted into Liens	\$1,559.02	
Interest and Costs	264.09	1,823.11
		\$8,423.32
DEDUCT - Cash Received During Year	\$1,329.30	
Transferred to Tax Acquired Property	1,394 48	2,723.78
		\$5,699.54

ALLOCATED AS FOLLOWS

YEAR	AMOUNT
1947	\$ 859.35
1946	239.38
1945	191.70
1944	191.41
1943	163.14
1942	168.01
1941	253.48
1940	398.95
1939	251.92
1938	394.82
1937	440.57
1936	333.66
1935	343.21
1934	343.26
1933	230 11
1932	489.13
1931	407.44
TOTAL	\$5,699.54

COMPARISON OF ACTUAL RECEIPTS

YEARS ENDED MARCH 31st, 1949 and MARCH 31st, 1948

YR. ENDED YR. ENDED  
MARCH 31, MARCH 31,

1949 1948 INCREASE DECREASE

Current Taxes - Real	\$1,274,059.04	\$1,208,091.24	\$ 65,967.80	\$
Current Taxes - Pers.	356,020.67	341,940.64	14,080.03	
Current Taxes - Poll	31,001.90	30,451.00	550.90	
Tax Deeds & Liens	1,329.30	4,103.87		2,774.57
Taxes - Real Property	12,453.72	10,634.62	1,819.10	
Taxes - Personal	1,053.75	6,554.92		5,501.17
Taxes - Polls	1,161.00	1,457.25		296.25
Penalties & Int. on Taxes	1,869.20	2,201.45		332.25
Motor Vehicle Excise Tax	105,786.92	89,425.24	16,361.68	
Taxi Licenses	620.50	256.00	364.50	
Health Licenses	153.00	134.00	19.00	
Plumbing Fees & Licenses	3,289.82	2,937.25	352.57	
Amusement Licenses	1,715.00	785.00	930.00	
Prof. & Occup. Licenses	988.50	1,114.00		125.50
Police & Pro. Licenses	4,072.50	744.00	3,328.50	
Dog Licenses	1,888.20	2,056.30		168.10
Marriage Licenses	1,098.00	1,428.00		330.00
Burial Permits	182.25	176.00	6.25	
Municipal Court Fees	8,237.57	8,903.73		666.16
Rents - City Building	3,192.50	4,017.50		825.00
Rents - Armory	4,712.50	2,742.50	1,970.00	
L & A Railroad Interest	13,500.00	13,500.00		
Taxes - Bank Stock	12,675.24	11,688.36	986.88	
Taxes - Tel. & Tel.	1,324.36	2,730.20		1,405.84
Dog Tax Refunds	584.37	- 0 -	584.37	
School Aid	75,831.99	77,020.14		1,188.15
Health Aid	1,000.00	600.00	400.00	
Library Aid	200.00	200.00		
Armory Aid	2,500.00	1,741.66	758.34	
Recording of Legal Instru.	3,576.79	3,318.50	258.29	
Vital Statistics	809.43	825.00		15.57
Sale of Ordinances, Etc.	58.00	20.00	38.00	
State Refunds for Road Main.	5,483.34	2,654.17	2,829.17	
Sewer Assessments	1,550.00	1,220.00	330.00	
Weights and Measures	244.05	227.10	16.95	
Police Charges	- 0 -	- 0 -		
Scale Fees	21.50	68.90		47.40
Fire Protection Services	1,029.17	259.16	770.01	
Tuition and Fees	4,629.54	2,840.00	1,789.54	
Library Fines, Fees & Rentals	935.52	953.46		17.94
Sales - City Farm	8,969.45	23,332.77		14,363.32
State Cases Reimbursements	15,973.72	12,187.40	3,786.32	
Outside Towns Reimbursements	2,741.08	3,115.66		374.58
Parking Meter Fines	3,727.50	3,591.00	136.50	
Unclassified Revenues	2,620.31	2,618.99	1.32	
Sale of Waste and Junk	131.24	244.39		113.15
Sale of Equipment	12.09	580.25		568.16
Sale of Real Property	1,560.31	8,821.36		7,261.05
Water Services	142,482.93	143,467.55		984.62
Hydrant Services	9,875.00	9,375.00	500.00	

TOTALS \$2,128,932.77 \$2,047,355.53 \$118,936.02 \$37,358.78

# Statement of Expenditures and Appropriations

## STATEMENT OF APPROPRIATIONS AND EXPENDITURES

YEAR APRIL 1st, 1948 TO MARCH 31st, 1949

	<i>Appropriations</i>		<i>Unexpended</i>	
	<i>And Credits</i>	<i>Expenditures</i>	<i>Balance</i>	<i>Overdraft</i>
<b>GENERAL GOVERNMENT</b>				
Mayor and Council	\$ 8,224.45	\$ 8,255.92	\$	\$ 31.47
City Clerk	15,388.51	15,455.27		66.76
Municipal Court	6,950.00	6,728.15	221.85	
Corporation Counsel	2,110.00	2,067.50	42.50	
Board of Registration	8,752.50	9,296.29		543.79
Elections	5,345.00	5,979.78		634.78
Finance Commission	2,000.00	1,850.00	150.00	
Controller	8,443.30	8,738.23		294.93
Auditor	11,756.40	12,176.01		419.61
Treasurer-Collector	14,050.01	14,800.28		750.27
Assessors	17,518.20	17,669.53		151.33
Unclassified	142,628.61	164,691.90		22,063.29
Contingent	19,632.00	-0-	19,632.00	
<hr/>				
<b>TOTAL GENERAL GOVERNMENT</b>	<b>\$ 262,798.98</b>	<b>\$ 267,708.86</b>	<b>\$ 20,046.35</b>	<b>\$ 24,956.23</b>
<b>PUBLIC WORKS</b>				
Administration	\$ 28,769.34	\$ 28,237.10	\$ 532.24	\$
Highways	220,518.26	205,880.35	14,637.91	
Snow Removal	1,844.79	42,508.65		40,663.86
Waste Removal	37,140.40	42,505.58		5,365.18
Walks	13,173.11	7,119.19	6,053.92	
Sewers	69,463.32	87,810.63		18,347.31
Bridges	21,615.00	19,576.88	2,038.12	
Tarring	26,503.00	17,624.03	8,878.97	
Street Lights	23,885.00	18,816.44	5,068.56	
Water Service	98,026.67	107,761.32		9,734.65
Permanent Streets	8,782.50	4,324.02	4,458.48	
New Equipment	30,310.00	30,370.69		60.69
City Building	19,683.33	20,965.27		1,281.94
Park Street Building	775.00	692.29	82.71	
City Park	4,516.10	3,341.07	1,175.03	
<hr/>				
<b>TOTAL PUBLIC WORKS</b>	<b>\$ 605,005.82</b>	<b>\$ 637,533.51</b>	<b>\$ 42,925.94</b>	<b>\$ 75,453.63</b>
<b>PUBLIC SAFETY</b>				
Police	\$ 203,111.62	\$ 183,132.67	\$ 19,978.95	\$
Fire	175,168.14	183,271.37		8,103.23
Building Inspection	360.00	337.87	22.13	
Electrical Inspection	780.00	559.30	220.70	
<hr/>				
<b>TOTAL PUBLIC SAFETY</b>	<b>\$ 379,419.76</b>	<b>\$ 367,301.21</b>	<b>\$ 20,221.78</b>	<b>\$ 8,103.23</b>

## EDUCATION

Administration	\$ 17,624.97	\$ 18,001.29	\$	\$ 376.32
Common Schools	238,496.26	240,836.28		2,340.02
High School	172,042.42	170,302.98	1,739.44	
Evening School	4,269.50	2,055.35	2,214.15	
Athletic Park	406.20	431.84		25.64
Playgrounds	8,318.00	7,855.35	462.65	
Skating Rinks	4,496.20	1,671.76	2,824.44	
Armory	12,203.60	12,798.00		594.40
Public Library	16,865.69	17,024.96		159.27
<b>TOTAL EDUCATION</b>	<b>\$ 474,722.84</b>	<b>\$ 470,977.81</b>	<b>\$ 7,240.68</b>	<b>\$ 3,495.65</b>

## HEALTH AND WELFARE

Administration	\$ 11,729.20	\$ 12,244.15	\$	\$ 514.95
Local	51,661.83	68,183.25		16,521.42
State	13,714.69	16,525.55		2,810.86
Outside Towns	4,561.53	5,943.38		1,381.85
Soldiers	8,495.00	13,283.23		4,788.23
Dept. Children and Mothers' Aid	21,000.00	13,767.66	7,232.24	
City Farm	24,329.38	27,338.69		3,009.31
City Physician	1,500.00	1,500.00		
Plumbing Inspection	2,000.00	1,806.06	193.94	
Health	14,817.00	14,772.54	44.46	
Communicable Diseases	8,491.75	7,748.40	743.35	
<b>TOTAL HEALTH AND WELFARE</b>	<b>\$ 162,300.38</b>	<b>\$ 183,112.91</b>	<b>\$ 8,214.09</b>	<b>\$ 29,026.62</b>

## DEBT SERVICE

Serial Bonds	\$ 96,000.00	\$ 106,000.00	\$	\$ 10,000.00
Bond Interest	32,165.00	31,592.50	572.50	
Miscellaneous Interest and Fees	1,500.00	3,308.24		1,808.24
<b>TOTAL DEBT SERVICE</b>	<b>\$ 129,665.00</b>	<b>\$ 140,900.74</b>	<b>\$ 572.50</b>	<b>\$ 11,808.24</b>

## CIVIL DIVISION

County Tax	\$ 65,000.00	\$ 63,497.28	\$ 1,502.72	
State Tax	274,500.00	274,126.83	373.17	
<b>TOTAL CIVIL DIVISION</b>	<b>\$ 339,500.00</b>	<b>\$ 337,624.11</b>	<b>\$ 1,875.89</b>	

## TOTAL ALL

DEPARTMENTS	\$2,353,412.78	\$2,405,159.15	\$101,097.23	\$152,843.60
-------------	----------------	----------------	--------------	--------------

COMPARISON OF EXPENDITURES

YEARS ENDED MARCH 31st, 1949 and MARCH 31st, 1948

	YR. ENDED MARCH 31, 1949	YR. ENDED MARCH 31, 1948	INCREASE	DECREASE
<b>GENERAL GOVERNMENT</b>				
Mayor and Council	\$ 8,255.92	\$ 8,100.42	\$ 155.50	\$
City Clerk	15,455.27	15,193.64	261.63	
Municipal Court	6,728.15	6,863.04		134.89
Corporation Counsel	2,067.50	2,115.88		48.38
Board of Registration	9,296.29	7,790.41	1,505.88	
Elections	5,979.78	1,417.36	4,562.42	
Finance Commission	1,850.00	1,980.00		130.00
Controller	8,738.23	8,417.70	320.53	
Auditor	12,176.01	11,352.46	823.55	
Treasurer-Collector	14,800.28	15,095.78		295.50
Assessors	17,669.53	15,601.53	2,068.00	
Unclassified	164,691.90	105,336.16	59,355.74	
<b>TOTAL GENERAL GOVERNMENT</b>	<b>\$ 267,708.86</b>	<b>\$ 199,264.38</b>	<b>\$ 69,053.25</b>	<b>\$ 608.77</b>
<b>PUBLIC WORKS</b>				
Administration	\$ 28,237.10	\$ 24,909.49	\$ 3,327.61	\$
Highways	205,880.35	178,215.07	27,665.28	
Snow Removal	42,508.65	60,053.27		17,544.62
Waste Removal	42,505.58	39,127.71	3,377.87	
Walks	7,119.19	5,757.59	1,361.60	
Sewers	87,810.63	24,196.19	63,614.44	
Bridges	19,576.88	3,991.10	15,585.78	
Tarring	17,624.03	28,251.13		10,627.10
Street Lights	18,816.44	16,140.65	2,675.79	
Water Service	107,761.32	95,420.47	12,340.85	
Permanent Streets	4,324.02	28,039.06		23,715.04
New Equipment	30,370.69	- 0 -	30,370.69	
City Building	20,965.27	18,065.12	2,900.15	
Park Street Building	692.29	652.09	40.20	
City Park	3,341.07	3,340.39	.68	
<b>TOTAL PUBLIC WORKS</b>	<b>\$ 637,533.51</b>	<b>\$ 526,159.33</b>	<b>\$ 163,260.94</b>	<b>\$ 51,886.76</b>
<b>PUBLIC SAFETY</b>				
Police	\$ 183,132.67	\$ 167,767.13	\$ 15,365.54	\$
Fire	183,271.37	170,567.16	12,704.21	
Building Inspection	337.87	331.79	6.08	
Sealer of Weights	- 0 -	2,144.11		2,144.11
Electrical Inspection	559.30	567.16		7.86
<b>TOTAL PUBLIC SAFETY</b>	<b>\$ 367,301.21</b>	<b>\$ 341,377.35</b>	<b>\$ 28,075.83</b>	<b>\$ 2,151.97</b>
<b>EDUCATION</b>				
Administration	\$ 18,001.29	\$ 19,115.68	\$	\$ 1,114.39
Common Schools	240,836.28	197,597.65	43,238.63	
High School	170,302.98	143,522.19	26,780.79	
Evening School	2,055.35	973.60	1,081.75	
Transportation —				
Parochial Schools	- 0 -	9,226.50		9,226.50
Athletic Park	431.84	1,984.26		1,552.42
Playgrounds	7,855.35	6,116.12	1,739.23	
Skating Rinks	1,671.76	959.81	711.95	
Armory	12,798.00	12,119.87	678.13	
Public Library	17,024.96	15,982.75	1,042.21	
<b>TOTAL EDUCATION</b>	<b>\$ 470,977.81</b>	<b>\$ 407,598.43</b>	<b>\$ 75,272.69</b>	<b>\$ 11,893.31</b>

## HEALTH AND WELFARE

Administration	\$ 12,244.15	\$ 11,951.64	\$ 292.51	\$
Local	68,183.25	49,743.71	18,439.54	
State	16,525.55	14,101.87	2,423.68	
Outside Towns	5,943.38	4,258.79	1,684.59	
Soldiers	13,283.23	10,791.46	2,491.77	
Dep. Children and Mothers' Aid	13,767.66	19,457.79		5,690.13
City Farm	27,338.69	27,701.39		362.70
City Physician	1,500.00	1,528.52		28.52
Plumbing Inspection	1,806.06	1,784.82	21.24	
Health	14,772.54	14,439.94	332.60	
Communicable Disease	7,748.40	8,588.02		839.62
<hr/>				
TOTAL HEALTH AND WELFARE	\$ 183,112.91	\$ 164,347.95	\$ 25,685.93	\$ 6,920.97
DEBT SERVICE				
Serial Bonds	\$ 106,000.00	\$ 101,000.00	\$ 5,000.00	
Bond Interest	31,592.50	35,748.50		4,156.00
Miscellaneous Interest and Fees	3,308.24	792.20	2,516.04	
<hr/>				
TOTAL DEBT SERVICE	\$ 140,900.74	\$ 137,540.70	\$ 7,516.04	\$ 4,156.00
CIVIL DIVISION				
County Tax	\$ 63,497.28	\$ 63,497.28		
State Tax	274,126.83	274,126.83		
TOTAL CIVIL DIVISION	\$ 337,624.11	\$ 337,624.11		
TOTAL ALL DEPARTMENTS	<u>\$2,405,159.15</u>	<u>\$2,113,912.25</u>	<u>\$368,864.68</u>	<u>\$77,617.78</u>



## STATEMENT OF CASH RECEIPTS AND DISBURSEMENTS

CASH BALANCE — APRIL 1, 1948

\$ 116,951.89

## RECEIPTS

Taxes - Municipal	\$1,675,750.08
Water Division	142,482.93
Education	75,831.99
Auto Excise Tax	105,786.92
City Farm	8,969.45
Welfare - State & Outside Towns	18,714.80
Interest - Lew., Aub., R. R. Stock	13,500.00
Bank Stock Tax	12,675.24
Licenses and Permits	14,007.77
Sale of Property and Equipment	1,572.40
Hydrant Services	9,875.00
Municipal Court	8,237.57
Rentals	7,905.00
Tax Deeds and Liens	1,329.30
Fines - Parking Meters	3,727.50
Recording Legal Documents	3,576.79
Tuitions and Fees	4,629.54
Telephone and Telegraph Tax	1,324.36
Highway State Refunds	5,483.34
Unclassified Revenues	2,620.31
Penalties and Interest	1,869.20
Armory State Aid	2,500.00
Sewer Assessments	1,550.00
Library Fines, Rentals State Aid	1,135.52
Recording Vital Statistics	809.43
Health - State Aid	1,000.00
Fire Department	1,029.17
Sale of Waste and Junk	131.24
Scale of Weights and Measures	244.05
Scale Fees	21.50
Sale of Ordinances	58.00
Dog Tax Refund	584.37

\$2,128,932.77

Temporary Loan	600,000.00
Non Rev. Interdept. Sales	136,292.28
Withholding Tax Collected	71,618.25
Teachers' Pension Fund	16,927.29
Miscellaneous	20.56
Parking Meter Fund (Accounts Rec.)	20,000.00

\$ 844,858.38\$2,973,791.15

TOTAL AMOUNT AVAILABLE

\$3,090,743.04

## DISBURSEMENTS

Public Works Department	
Building and Parks	\$ 637,533.51
Public Education and Library	470,977.81
Public Safety	367,301.21
State Tax	274,126.83
General Government - Finance	267,708.86
Health and Welfare	183,112.91
Debt Service	140,900.74
County Tax	63,497.28

\$2,405,159.15

Temporary Loan	\$ 600,000.00	
Withholding Tax Paid	71,618.25	
Teachers' Pension Fund	16,927.29	
Miscellaneous	23.95	
Refunds - Poll Tax	38.09	
Refunds - Various Licenses	110.50	
Refunds - Excise Tax	288.88	
	<u>                    </u>	\$ 689,006.96
		<u>                    </u> \$3,094,166.11

CASH BALANCE - MARCH 31st, 1949 — \$ 3,423.07

### VALUATION, COMMITMENT AND DEBT LIMIT

APRIL 1st, 1948 to MARCH 31st, 1949

#### VALUATION

Real Estate - Resident	\$23,279,285.00	
Real Estate - Non Resident	5,326,762.00	
	<u>                    </u>	\$28,606,047.00
Personal - Resident	\$ 7,624,405.00	
Personal - Non Resident	379,800.00	
	<u>                    </u>	\$ 8,004,205.00
<b>TOTAL VALUATION</b>		<u>                    </u> \$36,610,252.00

#### COMMITMENT

Real Estate	\$28,606,047.00 @ 45.00 per M	\$1,287,272.12	
Personal	8,004,205.00 @ 45.00 per M	360,189.22	
		<u>                    </u>	\$ 1,647,461.34
Polls	10,983 @ 3.00		32,949.00
Supplement - Real Estate			650.25
Supplement - Personal			184.50
Supplement - Polls	375 @ 3.00		1,125.00
Less - Variance			2.35
			<u>                    </u>

**TOTAL COMMITMENT**                      \$ 1,682,367.74

**ASSESSORS VALUATION** \$36,610,252.00

**DEBT LIMIT 5% OF VALUATION** \$ 1,830,512.60

**CITY OF LEWISTON LIABILITIES**

Bonded Indebtedness	1,130,000.00
	<u>                    </u>

**NET BORROWING CAPACITY** \$ 700,512.60

## GENERAL GOVERNMENT

### MAYOR AND COUNCIL

Salaries - Regular	\$ 5,189.12
Other Fees and Commissions	2,541.00
Printing, Binding and Stationery	56.50
Postage	31.65
Tel. & Other Commun.	303.48
Sub., Textbooks, Period.	3.00
Repairs to Equipment	15.00
Office Supplies	10.35
Print. & Reproducing Sup.	5.82
Dues and Memberships	100.00

TOTAL \$ 3,255.92

### CITY CLERK

Salaries - Regular	\$ 9,165.48
Printing, Binding and Stationery	290.34
Dept. Reports & Bulletins	1,361.58
Advertising Services	610.35
Postage	180.34
Tel. & Other Commun.	234.75
Traveling Expenses	5.00
Mileage & Other Per. Allow.	100.00
Freight and Cartage	10.46
Sub., Textbooks, Period	17.00
Med. Sur. & Dental Serv.	155.00
Repairs to Equipment	34.88
Special & Other Services	655.75
Office Supplies	308.94
Print. & Reproducing Sup	363.72
Other Op. & Main. Sup	1.85
Other Fixed Charges	1,853.70
Office Equipment	106.13

TOTAL \$15,455.27

### MUNICIPAL COURT

Salaries - General	\$ 6,144.65
Printing, Binding and Stationery	161.57
Postage	5.51
Tel. & Other Commun.	143.13
Sub., Textbooks, Period	81.31
Spec. & Other Misc. Services	1.25
Office Supplies	190.73

TOTAL \$ 6,728.15

### CORPORATION COUNSEL

Salaries - Regular	\$ 2,000.00
Dues and Subscriptions	67.50

TOTAL \$ 2,067.50

### BOARD OF REGISTRATION

Salaries - Regular	\$ 7,100.44
Wages - Temporary	514.00

Printing, Binding, Stationery	1,356.00
Advertising	129.85
Postage	2.21
Tel. & Other Commun.	102.53
Sub., Textbooks, Period.	10.00
Repairs to Equipment	7.90
Special Services	26.50
Office Supplies	41.09
Print & Reproducing Sup.	5.77

TOTAL \$ 9,296.29

### ELECTIONS

Wages - Temporary	\$ 4,320.54
Printing, Binding, Stationery	846.16
Advertising	54.00
Frgh. & Cart. - Booths	282.58
Repairs to Equipment	181.88
Spec. & Other Misc. Services	90.64
Office Supplies	23.37
Other Op. & Main Supplies	5.61
Rent	175.00

TOTAL \$ 5,979.78

### FINANCE COMMISSION

Other Fees & Commissions \$ 1,850.00

### CONTROLLER

Salaries - Regular	\$ 6,476.32
Printing, Binding, Stationery	341.90
Advertising Services	180.41
Postage	56.11
Tel. & Other Commun.	135.03
Mileage & Other Allowances	100.00
Freight & Cartage	20.19
Sub., Textbooks, Period.	79.00
Repairs to Equipment	65.94
Office Supplies	704.33
Printing, Reproducing Sup.	469.00
Dues and Memberships	110.00

TOTAL \$ 8,738.23

### AUDITOR

Salaries - Regular	\$10,526.35
Printing, Binding, Stationery	443.59
Advertising Services	235.19
Postage	15.06
Tel. & Other Commun.	186.22
Traveling Expenses	39.12
Mileage & Other Allowances	100.00
Freight & Cartage	11.81
Sub., Textbooks, Period.	136.50
Repairs to Equipment	118.03
Office Supplies	266.26
Printing, Reproducing Sup.	31.21
Dues and Memberships	66.67

TOTAL \$12,176.01

TREASURER-COLLECTOR

Salaries - Regular	\$11,802.00
Printing, Binding, Stationery	726.88
Advertising Services	119.27
Postage	666.41
Tel. & Other Commun.	225.09
Traveling Expenses	19.45
Mileage & Other Allowances	400.00
Freight & Cartage	14.36
Sub., Textbooks, Period.	50.00
Repairs to Equipment	176.85
Special & Other Services	377.05
Office Supplies	199.60
Printing, Reproducing Sup.	3.32
Dues and Memberships	20.00
<b>TOTAL</b>	<b>\$14,800.28</b>

ASSESSORS

Salaries - Regular	\$13,544.00
Wages - Temporary	2,249.00
Printing, Binding, Stationery	349.34
Advertising Services	19.60
Postage	10.56
Telephone	108.88
Traveling Expenses	90.89
Mileage & Other Allowances	620.00
Sub., Textbooks, Period.	25.35
Repairs to Equipment	47.38
Special and Other Services	167.50
Office Supplies	49.12
Printing, Reproducing Sup.	46.71
Dues and Memberships	45.00
Office Equipment	296.20
<b>TOTAL</b>	<b>\$17,669.53</b>

UNCLASSIFIED

Fees, Com. & Services	\$11,444.50
Printing, Binding, Stationery	158.04
Advertising Services	197.95
Postage	1,697.99
Traveling Expenses	714.11
Carfare & Transportation	13,356.00
Freight and Cartage	8.25
Special & Other Services	23,236.99
Special and Other Services— Vet's Account	8,560.99
Office Supplies	36.18
Printing, Reproducing Sup.	176.40
Other Op. & Main. Sup.	867.29
Other Op. Sup—Meters	1,078.95
Dues and Memberships	822.00
Donations & Contributions	4,075.00
Pensions & Retirements	10,278.38
Claims and Damages	3,677.56
Surety Bond Pre. & Ins.	67,096.22

Workmen's Med. & Com. Exp.	39.65
Other Fixed Charges	17,169.45

<b>TOTAL</b>	<b>\$164,691.90</b>
<b>TOTAL GENERAL GOV.</b>	<b>\$267,708.86</b>

PUBLIC WORKS  
ADMINISTRATION

Salaries - Regular	\$18,106.92
Wages - Temporary	4,847.24
Other Fees & Commissions	960.00
Printing, Binding, Stationery	222.33
Postage	39.02
Telephone	456.47
Traveling Expenses	2.50
Subscriptions	6.00
Repairs to Equipment	135.51
Special and Other Services	4.00
Office Supplies	122.31
Printing, Reproducing Sup.	33.45
Other Op. & Main. Supplies	.85
Claims, Damages, Judgments	4.00
Workmen's Medical and Compensation Services	2,207.59
Office Equipment	989.99
Other Betterments	98.92
<b>TOTAL</b>	<b>\$28,237.10</b>

HIGHWAYS

Wages - Regular	\$129,280.54
Freight and Cartage	272.24
Rental of Motor Vehicles, Office & Other Equip	79.57
Repairs and Maintenance— Motor Vehicles	7,339.95
Repairs & Main.—Equip.	12,828.26
Repairs and Maintenance— Build. & Structures	520.96
Special & Other Services	433.28
Special & Other Serv. - Trees	81.88
Fuel Supplies	4,624.76
Gas, Oil & Lubricants	24,545.16
Tires and Tubes	2,313.16
Wearing Apparel	13.01
House. & Insti. Supplies	479.14
Small Tools & Implements	974.30
Clean. & Disinfectant Sup.	718.79
Agri. & Botanical Sup.	49.95
Construction Material	13,259.08
Other Op. & Main. Sup.	1,831.07
Garage Shop Equipment	70.18
Household Equipment	77.27
Other Betterments	6,087.80
<b>TOTAL</b>	<b>\$205,880.35</b>

### SNOW REMOVAL

Wages - Regular	\$29,672.05
Advertising Services	16.80
Freight and Cartage	240.37
Rental of Motor Vehicles	9,057.20
Repairs & Main. - Equip.	1,641.73
Special & Other Service	223.56
Construction Materials	836.41
Other Op. & Main. Sup.	820.53
<b>TOTAL</b>	<b>\$42,508.65</b>

### WASTE REMOVAL

Wages - Regular	\$35,350.98
Advertising Services	25.00
Freight and Cartage	15.79
Rental of Motor Vehicles	1,684.24
Special & Other Services	5,429.57
<b>TOTAL</b>	<b>\$42,505.58</b>

### WALKS

Wages - Regular	\$ 2,717.80
Rental of Motor Vehicles	516.40
Construction Materials	3,884.99
<b>TOTAL</b>	<b>\$ 7,119.19</b>

### SEWERS

Wages - Regular	\$36,180.30
Rental of Motor Vehicles	9,669.88
Repairs to Equipment	72.00
Special & Other Services	6.08
Construction Materials	10,453.36
Other Betterments	31,429.01
<b>TOTAL</b>	<b>\$87,810.63</b>

### BRIDGES

Wages - Regular	\$ 6,060.78
Other Fees & Commissions	16.80
Freight and Cartage	19.58
Rental of Motor Vehicles	667.55
Repairs to Equipment	2.80
Repairs and Maintenance —	
Build. & Structures	61.60
Construction Material	1,597.77
Other Betterments	11,150.00
<b>TOTAL</b>	<b>\$19,576.88</b>

### TARRING

Wages - Regular	\$ 5,838.72
Freight and Cartage	3.30
Rental of Motor Vehicles	2,581.62
Special & Other Service.	125.50
Gas, Oil & Lubricants	5.07
Construction Material	9,069.82
<b>TOTAL</b>	<b>\$17,624.03</b>

### STREET LIGHTS

Wages - Regular	\$ 5,696.32
Wages - Temporary	939.13
Postage	.25
Freight and Cartage	29.75
Rental of Motor Vehicles	23.40
Repairs and Maintenance —	
Motor Vehicles	315.87
Repairs & Main. - Equip.	22.89
Special and Other Services	257.42
Gas, Oil, Lubricants	273.67
Tires and Tubes	26.03
Wearing Apparel	40.81
Small Tools and Implements	76.41
Clean & Disinfecting Sup.	1.76
Construction Materials	10,177.01
Other Op. & Main. Sup.	233.74
Other Betterments	701.98

<b>TOTAL</b>	<b>\$18,816.44</b>
--------------	--------------------

### WATER SERVICES

Salaries - Regular	\$27,812.23
Wages - Regular	16,801.46
Wages - Temporary	22,266.18
Other Fees & Commissions	440.00
Printing, Binding, Stationery	409.80
Advertising Services	45.29
Postage	583.06
Telephone	216.31
Traveling Expenses	7.29
Freight and Cartage	538.47
Subscriptions	3.00
Rental of Motor Vehicles	637.33
Repairs and Maintenance of	
Motor Vehicles	1,041.49
Repairs and Main. of Equip.	2,684.68
Repairs and Maintenance—	
Buildings and Structures	104.85
Special & Other Services	217.77
Office Supplies	143.50
Fuel Supplies	961.64
Gas, Oil, Lubricants	1,214.07
Tires and Tubes	13.37
Wearing Apparel	30.03
House. & Institutional Sup.	51.99
Small Tools & Implements	272.03
Clean & Disinfecting Sup.	31.10
Construction Material	13,986.05
Other Op. & Main. Supplies	960.16
Dues and Memberships	30.00
Other Fixed Charges	612.13
Household Equipment	395.20
Light, Heat, Power and	
Water Equipment	6,657.00
Other Betterments	8,593.84

<b>TOTAL</b>	<b>\$107,761.32</b>
--------------	---------------------

## PERMANENT STREETS

Wages - Regular	\$ 2,010.00
Rental of Motor Vehicles	713.05
Special and Other Services	176.00
Construction Material	1,424.97

TOTAL \$ 4,324.02

## NEW EQUIPMENT \$30,370.69

### CITY BUILDING

Wages - Regular	\$11,380.80
Light, Heat, Power & Water Service	64.12
Freight and Cartage	94.84
Repairs & Main. - Equip.	155.66
Repairs and Maintenance— Build. & Structures	833.40
Special & Other Services	3.92
Fuel Supplies	3,686.84
Small Tools & Implements	13.04
House. & Institutional Sup.	163.70
Clean. & Disinfecting Sup.	720.56
Construction Materials	15.30
Other Op. & Main. Sup.	307.93
Other Betterments	3,525.16

TOTAL \$20,965.27

### PARK STREET BUILDING

Repairs to Build. & Struct.	\$ 58.35
Fuel Supplies	633.94

TOTAL \$ 692.29

### CITY PARK

Wages - Regular	\$ 2,378.67
Wages - Temporary	151.88
Repairs & Main. — Equip	45.53
Repairs and Maintenance— Build. and Structures	26.69
Special & Other Services	304.15
Gas, Oil, Lubricants	4.04
Small Tools and Implements	.28
Construction Materials	46.77
Other Op. & Main. Sup.	.92
Other Betterments	382.14

TOTAL \$ 3,341.07

TOTAL PUBLIC WORKS \$637,533.51

## PUBLIC SAFETY

### POLICE

Salaries - Regular	\$141,780.79
Wages - Temporary	6,819.36
Other Fees & Commissions	895.00
Printing Binding, Stationery	547.81
Advertising Services	22.40
Postage	18.70
Telephone	873.58

Traveling Expenses	159.00
Mileage & Other Allowances	192.00
Freight and Cartage	30.87
Sub., Textbooks, Period.	157.00
Cleaning	23.69
Repairs and Maintenance — Motor Vehicles	3,059.50
Repairs and Maintenance — Equipment	1,362.92
Repairs and Maintenance — Buildings and Structures	24.82
Repairs & Main. — Signs	1,772.06
Criminal Investigation Exp.	309.98
Special & Other Services	189.85
Office Supplies	403.28
Printing, Reproducing Sup.	401.32
Gas, Oil, Lubricants	4,036.21
Tires and Tubes	523.92
Wearing Apparel	387.91
Medical Supplies	2.00
House. & Institutional Sup.	20.50
Public Safety Supplies	338.72
Small Tools & Implements	63.88
Clean. & Disinfecting Sup.	24.61
Construction Materials	944.81
Other Op. Main. Supplies	380.49
Meals and Lodging	467.40
Dues and Memberships	10.00
Pensions and Retirements	13,644.80
Office Equipment	569.39
Motor Vehicle Equipment	1,995.00
Garage Shop Equipment	113.35
Public Safety Equipment	52.96
Com. & Broad. Equip.	332.41
Other Op. & Main. Equip.	180.38

TOTAL \$183,132.67

## FIRE

Salaries - Regular	\$140,644.05
Wages - Temporary	3,505.34
Other Fees & Commissions	1,100.00
Printing, Binding, Stationery	99.05
Advertising Service	95.30
Postage	33.70
Telephone	841.84
Light, Heat, Power and Water Services	239.04
Traveling Expenses	310.00
Freight and Cartage	38.97
Subscriptions	22.50
Cleaning & Sanitary Service	258.29
Medical & Dental Services	18.94
Repairs and Maintenance — Motor Vehicles	2,005.41
Repairs & Main. — Equip.	1,296.43
Repairs and Maintenance — Buildings and Structures	866.67
Special and Other Services	83.38
Office Supplies	32.46
Printing, Reproducing Sup.	24.97

Fuel Supplies	2,264.62
Gas, Oil, Lubricants	982.98
Tires and Tubes	482.88
Wearing Apparel	883.09
Medical Supplies	96.52
House. & Institutional Sup.	81.58
Public Safety Supplies	124.38
Small Tools & Implements	99.22
Clean. & Disinfecting Sup.	528.13
Construction Materials	5.87
Other Op. & Main. Supplies	181.88
Dues and Memberships	14.00
Pension Retirements	8,018.15
Workmen's Medical and Compensation Expenses	44.00
Office Fixed Charges	9,875.00
Office Equipment	54.88
Motor Vehicles Equip.	1,540.60
Construction Equipment	100.00
Public Safety Equipment	2,145.25
Com. & Broad. Equipment	2,942.46
Household Equipment	232.04
Medical, Surgical Laboratory Equipment	495.00
Other Op. & Main Equip	562.50
<b>TOTAL</b>	<b>\$183,271.37</b>

#### BUILDING INSPECTION

Salaries - Regular	\$ 300.00
Printing, Binding, Stationery	29.94
Office Supplies	7.93
<b>TOTAL</b>	<b>\$ 337.87</b>

#### ELECTRICAL INSPECTION

Wages - Temporary	\$ 200.00
Other Fees & Commissions	270.00
Printing, Binding Stationery	57.90
Postage	12.00
Repairs to Equip.—Office	10.00
Office Supplies	9.40
<b>TOTAL</b>	<b>\$ 559.30</b>

<b>TOTAL PUBLIC SAFETY</b>	<b>\$367,301.21</b>
----------------------------	---------------------

#### EDUCATION

##### ADMINISTRATION

Salaries - Regular	\$15,892.07
Other Fees & Commissions	895.00
Printing, Binding, Stationery	77.37
Postage	68.67
Telephone	217.41
Mileage & Other Per. Allow.	600.00
Freight and Cartage	2.40
Subscriptions, Periodicals	20.80
Repairs & Main. - Equip.	96.75
Office Supplies	53.22
Print. Reproducing Sup.	77.60
<b>TOTAL</b>	<b>\$18,001.29</b>

#### COMMON SCHOOLS

Salaries - Regular	\$179,732.06
Wages - Temporary	4,341.40
Salaries - School Janitors	20,477.84
Printing, Binding, Stationery	151.02
Postage	10.84
Telephone	792.39
Light, Heat, Power and Water Services	54.24
Carfare & Transportation	14,816.40
Freight and Cartage	21.93
Repairs & Main. - Equip.	500.25
Repairs & Maintenance— Buildings and Structures	2,742.01
Special and Other Services	18.00
Testing Services	251.40
Office Supplies	87.76
Print. & Reproducing Sup.	34.40
Fuel Supplies	8,769.18
Gas, Oil, Lubricants	6.54
Medical Supplies	2.59
House. & Institutional Sup	51.52
Small Tools & Implement	18.17
Clean. & Disinfecting Sup.	517.10
Agri., Botanical, Animal Sup.	3.43
Educational Supplies	2,130.46
Manual Training Supplies	435.66
Domestic Arts Supplies	629.49
Recreational Supplies	32.35
Books - Schools	3,163.04
Books Period., Sub. - Library	132.14
Other Op & Main. Supplies	120.02
Art Supplies	115.77
Office Equipment	24.52
Light, Heat, Power and Water Equipment	443.82
Educational Equipment	173.55
Other Op. & Main. Equip.	35.00

<b>TOTAL</b>	<b>\$240,836.28</b>
--------------	---------------------

#### HIGH SCHOOL

Salaries - Regular	\$139,135.90
Wages - Temporary	3,052.70
Salaries - School Janitors	9,062.79
Other Fees & Commissions	500.00
Printing, Binding, Stationery	491.17
Postage	72.00
Telephone	312.86
Light, Heat, Power and Water Service	71.12
Subscriptions Periodicals	4.00
Freight and Cartage	29.00
Repairs & Main. - Equip.	339.04
Repairs and Maintenance — Buildings and Structures	1,403.19
Testing Service	908.43
Office Supplies	41.40
Print. & Reproducing Sup.	241.71
Fuel Supplies	5,067.57
Gas, Oil, Lubricants	3.93

Medical, Surgical and	
Laboratory Supplies	218.79
House. & Institutional Sup.	64.18
Small Tools & Implements	14.03
Clean. & Disinfecting Sup.	577.25
Agricultural, Botanical,	
Animal Supplies	24.00
Educational Supplies	1,371.99
Manual Training Supplies	483.70
Domestic Supplies	167.27
Books - School	3,163.32
Books, Period., Sub. - Library	557.44
Other Op. & Main. Sup.	87.25
Trade School	270.06
Art Supplies	208.76
Educational Equipment	2,358.13
<b>TOTAL</b>	<b>\$170,302.98</b>

#### EVENING SCHOOL

Salaries - Regular	\$ 1,675.00
Salaries - School Janitors	324.00
Advertising Services	47.35
Postage	9.00
<b>TOTAL</b>	<b>\$ 2,055.35</b>

#### ATHLETIC PARK

Salaries - Regular	\$ 423.84
Advertising Services	8.00
<b>TOTAL</b>	<b>\$ 431.84</b>

#### PLAYGROUNDS

Wages - Temporary	\$ 4,604.00
Carfare Transportation	500.00
Freight and Cartage	177.05
Repairs & Main. - Equip.	702.89
Repairs and Maintenance	
Buildings & Structures	621.55
Special and Other Services	33.80
Medical Supplies	19.15
Small Tools and Implements	2.73
Clean. & Disinfecting Sup.	43.73
Educational Supplies	7.36
Recreational Supplies	95.93
Other Op. & Main. Sup.	3.13
Recreational Equipment	550.00
Other Op. & Main. Equip.	494.03
<b>TOTAL</b>	<b>\$ 7,855.35</b>

#### SKATING RINKS

Wages - Temporary	\$ 557.14
Rental of Motor Vehicles	124.00
Repairs and Maintenance—	
Buildings & Structures	37.95
Spec. & Other Mis. Services	952.67
<b>TOTAL</b>	<b>\$ 1,671.76</b>

#### ARMORY

Wages - Regular	\$ 7,457.46
Wages - Temporary	146.39
Telephone	36.27
Light, Heat, Power and	
Water Services	21.88
Cleaning	5.00
Repairs & Main. - Equip.	464.50
Repairs and Maintenance —	
Buildings & Structures	516.40
Special and Other Services	12.44
Fuel Supplies	3,578.68
House. & Institutional Sup.	36.26
Small Tools and Implements	4.26
Clean. & Disinfecting Sup.	256.20
Agri., Botanical, Supplies	2.62
Other Op. & Main. Supplies	49.64
Communication and	
Broadcasting Equip.	210.00
<b>TOTAL</b>	<b>\$12,798.00</b>

#### TOTAL

#### PUBLIC LIBRARY

Salaries - Regular	\$12,028.68
Printing, Binding, Stationery	470.35
Postage	30.00
Telephone	108.88
Freight and Cartage	6.60
Repairs to Equipment	9.64
Repairs and Maintenance —	
Buildings & Structures	365.30
Special and Other Services	31.30
Office Supplies	170.06
Fuel Supplies	1,031.19
House. & Institutional Sup.	27.08
Cleaning & Disinfecting	51.02
Agricultural, Botanical,	
Animal Supplies	19.00
Books, Periodical,	
Subscriptions - Library	2,481.03
Other Op. & Main. Supplies	29.74
Dues and Memberships	10.00
Office Equipment	123.59
Household Equipment	31.50
<b>TOTAL</b>	<b>\$ 17,024.96</b>

<b>TOTAL EDUCATION</b>	<b>\$470,977.81</b>
------------------------	---------------------

#### HEALTH AND WELFARE ADMINISTRATION

Salaries - Regular	\$ 9,900.64
Other Fees & Commissions	925.00
Printing, Binding, Stationery	96.45
Postage	15.12
Telephone	152.46
Mileage & Other Allowances	300.00
Freight and Cartage	1.50
Sub., Textbooks, Periodicals	10.00
Repairs and Maintenance —	
Equipment Office	23.75



Special & Mis. Service	2.00
Office Supplies	15.35
Fuel Supplies	136.46
Other Op. & Main. Supplies	145.46
Rent - Store	519.96

TOTAL \$ 12,244.15

#### LOCALS

Advertising Services	\$ 22.50
Light, Heat, Power and Water Services	24.25
Carfare and Transportation	.50
Freight and Cartage	74.30
Cleaning & Sanitary Service	62.02
Medical, Surgical and Dental Services	681.75
Special & Other Services	186.52
Hospital Services and Care	3,342.29
Insti. Services & Care	16,960.75
Burial & Ambulance Service	1,503.00
Fuel Supplies	3,727.94
Food and Groceries	14,946.63
Milk	2,232.69
Wearing Apparel	1,831.68
Medical, Surgical and Laboratory and Supplies	910.88
Rents	6,493.89
Board and Room	15,181.66

TOTAL \$68,183.25

#### STATE

Salaries - Regular	\$ 300.00
Light, Heat, Power and Water Services	64.42
Carfare and Transportation	167.18
Freight and Cartage	193.03
Cleaning & Sanitary Service	2.00
Medical, Surgical and Dental Services	50.00
Special and Other Services	32.96
Hospital Services & Care	514.20
Insti. Services & Care	2,478.45
Burial & Ambulance Service	8.00
Fuel Supplies	1,097.60
Food and Groceries	4,970.26
Milk	537.11
Wearing Apparel	760.12
Medical, Surgical and Laboratory Supplies	38.42
House. & Insti. Supplies	86.32
Rents	2,088.22
Board and Room	3,137.26

TOTAL \$16,525.55

#### OUTSIDE TOWNS

Carfare & Transportation	\$ .20
Medical, Surgical and	

Dental Services	5.00
Hospital Services & Care	575.95
Insti. Services and Care	666.40
Fuel Supplies	200.05
Food and Groceries	2,848.82
Milk	157.13
Wearing Apparel	132.28
Medical, Surgical and Laboratory Supplies	1.15
Rents	337.85
Board and Room	1,018.55

TOTAL \$ 5,943.38

#### SOLDIERS

Medical, Surgical and Dental Services	\$ 237.00
Hospital Services & Care	566.72
Insti. Services & Care	456.70
Burial & Ambulance Service	115.00
Fuel Supplies	973.94
Food and Groceries	5,403.74
Milk	450.44
Wearing Apparel	276.09
Medical, Surgical and Laboratory Supplies	10.18
Rents	1,337.75
Board and Room	3,455.67

TOTAL \$13,283.23

#### DEPENDENT CHILDREN AND MOTHERS AID

Other Fixed Charges	\$13,767.66
---------------------	-------------

#### CITY FARM

Salaries - Regular	\$ 3,580.20
Wages - Regular	7,334.01
Other Fees & Commissions	2,270.50
Advertising Services	41.50
Postage	.75
Telephone	149.73
Freight and Cartage	4.70
Medical, Surgical and Dental Services	34.25
Repairs and Maintenance — Motor Vehicles	1,810.94
Repairs and Maintenance — Equipment	79.97
Repairs and Maintenance — Buildings and Structures	231.50
Special & Other Services	9.00
Hospital Services & Care	596.20
Insti. Services & Care	272.19
Burial & Ambulance Service	436.00
Fuel Supplies	1,385.75
Gas, Oil, Lubricants	1,147.67
Tires and Tubes	274.94
Food and Groceries	4,194.47
Milk	1,127.89

Forage and Veterinary	659.27
Wearing Apparel	546.79
Medical, Surgical and Laboratory Supplies	81.15
House. & Insti. Supplies	88.24
Small Tools & Implements	31.21
Clean. & Disinfecting Sup.	153.67
Agri., Bot. Animal Supplies	113.56
Construction Material	5.70
Other Op. & Main. Sup.	29.54
Workmen's Medical and Compensation Expenses	647.40
<b>TOTAL</b>	<b>\$27,338.69</b>

CITY PHYSICIAN \$ 1,500.00

PLUMBING INSPECTION \$ 1,806.06

### HEALTH

Salaries - Regular	\$12,954.65
Printing, Binding, Stationery	99.72
Postage	36.12
Telephone	142.68
Mileage & Other Allowances	10.00
Sub., Textbooks, Period.	83.00
Cleaning	5.32
Freight and Cartage	10.03
Medical, Surgical and Dental Services	267.00
Repairs and Maintenance — Motor Vehicles	66.90
Special & Other Services	4.44
Hospital Services & Care	105.00
Office Supplies	47.61
Print. & Reproducing Sup.	9.03
Gas, Oil, Lubricants	144.33
Tires and Tubes	24.81
Medical, Surgical and Laboratory Sup.	587.65
Clean. & Disinfecting Sup.	42.54
Educational Supplies	13.01
Dues and Memberships	2.00
Office Equipment	116.70
<b>TOTAL</b>	<b>\$14,772.54</b>

### COMMUNICABLE DISEASE

Light, Heat, Power and Water Services	\$ 14.75
Medical, Surgical and Dental Services	311.50
Special & Other Services	1.50
Hospital Services & Care	134.13
Insti. Services & Care	1,637.57
Burial, Ambulance & Care	104.00
Fuel Supplies	182.70
Food and Groceries	1,268.55
Milk	261.12
Wearing Apparel	112.73
Medical, Surgical and Laboratory Supplies	135.95
Rents	198.50
Board and Room	3,385.40

**TOTAL** \$ 7,748.40

**TOTAL HEALTH AND  
WELFARE** \$183,112.91

### DEBT SERVICE

Serial Bonds	
Other Fixed Charges	\$106,000.00
Bond Interest	
Other Fixed Charges	31,592.50
Miscellaneous Interest and Fees	
Other Fixed Charges	3,308.24

**TOTAL DEBT SERVICE** \$140,900.74

### CIVIL DIVISION

County Tax	\$ 63,497.28
State Tax	274,126.83

**TOTAL CIVIL  
DIVISION** \$337,624.11

**GRAND TOTAL ALL  
DEPARTMENTS** \$2,405,159.15

## I N D E X

Abatements	37
Appropriations	5, 35, 37, 42
Arrests	18, 19
Assessors	16, 42
Assets	38
Auto Excise Tax	37
Balance Sheet, Comparative	38, 39
Birth Rate	33, 34
Bonded Debt	37, 39, 47
Borrowing Capacity	37, 47
Chief Auditor	13, 42
Clerk	9, 42
Collector	14, 42
Construction and Inspection	.. 22
Controller	14, 42
Counsel	11, 42
County Tax	43
Death Rates	33, 34
Debt	47
Disbursements	35, 42, 44, 45, 46, 48-55
Education	24, 37, 43
Elections	9, 42
Farm	34, 37, 43
Finance Board	13, 42
Fire Department	20, 42
Fire Losses	20
Health	33, 43
Highways	28
History	4, 5
Infant Mortality	33, 34
Interest	39, 43, 45
Library	27, 43

Licenses	9
Municipal Court	20, 42
Officials	7
Outside Audit	37
Pension Board	12
Police	18, 42
Population	4
Public Safety	18, 42
Public Works	28, 42
Purchases	14
Recreation	26
Registry Board	12, 42
Revenues	41, 46
Snow Removal	28
State Tax	43
Street Lights	29
Tax Collection	14, 37, 39
Tax Deeds	38, 40
Tax Dollar	36
Taxes	14, 47
Tax Liens	37, 38, 40
Tax Rate	5, 14, 16, 25
Topography	5
Treasurer	14, 42
Valuation	5, 16, 47
Veterans Service	11
Vital Statistics	10
Water Division	29
Welfare	33, 34, 37, 43

## *What Am I?*

I am a little thing. I cost nothing.  
I am worth more than gold to you.  
The more you use me, the more  
you have. I unlock doors, open  
hearts, dispel prejudices. I make  
friendships. I inspire respect and  
admiration. I am always welcome.  
I bore nobody. I violate no law.  
No one condemns me. I'm pleasing  
to everyone. I am indispensable.  
I AM COURTESY!



Tufts Brothers, *Printers*  
Lewiston, Maine