

The University of Maine

DigitalCommons@UMaine

Vocal Popular Sheet Music Collection

Public domain (may be downloaded in full)

1919

Come Into The Parlor

Cy Coben
Composer

Shaun Glenville
Composer

Nash
Composer

Follow this and additional works at: <https://digitalcommons.library.umaine.edu/mmb-vp>

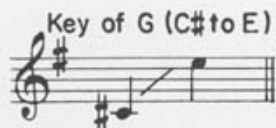
Recommended Citation

Coben, Cy; Glenville, Shaun; and Nash, "Come Into The Parlor" (1919). *Vocal Popular Sheet Music Collection*. Score 4937.

<https://digitalcommons.library.umaine.edu/mmb-vp/4937>

This Book is brought to you for free and open access by DigitalCommons@UMaine. It has been accepted for inclusion in Vocal Popular Sheet Music Collection by an authorized administrator of DigitalCommons@UMaine. For more information, please contact um.library.technical.services@maine.edu.

COME INTO THE PARLOR



Words and Music by
SHAUN GLENVILLE
FRANK MILLER
CY COBEN



PRICE
SEVENTY FIVE CENTS
in U.S.A.

VP.018364
1919
COME

LEEDS MUSIC CORPORATION

Come Into The Parlor

Key of G (C#-E)

Tune Uke
A D F# B



Words and Music by
SHAUN GLENVILLE
FRANK MILLER
CY COBEN (A.S.C.A.P.)

Moderately

Piano *mf*

Chorus * D7 G A7

1. If you're I - rish, COME IN - TO THE PAR -
 (2. If you're) Swe - dish, COME IN - TO THE PAR -
 (3. If you're) Brit - ish, COME IN - TO THE PAR -
 (4. If you're) Span - ish, COME IN - TO THE PAR -

LOR, There's a wel - come there for you. If your
 LOR, Yes, come in and skoal with us. If your
 LOR, And we'll 'ave a bit of cheer. If your
 LOR, If you're French, you're wel - come, too. If you're

name is Tim - o - thy or Pat, So long as you come from
 name is Karl or In - ge - borg, Just pull up a chair, and
 name is Bert or Ab - i - gale, And if you're a lime - y,
 Dan - ish, It - al - i - an, or Greek, A wel - com - ing smile will

* Symbols for Guitar, Diagrams for Ukulele.

L 807 - 3

© Copyright MCMXIX by B. Feldman & Co., Ltd., London, England

© Copyright renewed MCMXLVI and assigned to B. Feldman & Co., Ltd.

This version © Copyright MCML by B. Feldman & Co., Ltd., London, England.

LEEDS MUSIC CORPORATION, 322 West 48th Street, New York 36, N.Y. Sole Selling Agents for Western Hemisphere.

International Copyright Secured

Made in U.S.A.

All Rights Reserved

A7 D D7 G

Ire - land, There's a wel - come on the mat! If you come from
 we'll pre - pare a lit - tle smör-gas - bord! If you come from
 blime - y, then we'll split a pint of ale! If you've walked through
 make up for the lan-guag-es I don't speak! If you come from

mf-mp

A7 D7

— the moun - tains of Mourne, Or Kil - lar - ney's
 — the vil - lage of Mal - mö, Or where Stock - holm
 — the mead ows of Dev - on, Or the fog of
 — the braes of old Scot - land, Or the plains of

D7+ G

lakes so blue. We'll sing you a song, and we'll
 stands so tall. We'll roll out the bar - rel, and
 Lon - don, too. If you've ev - er rid - den an
 Is - real, too. My door will be o - pen to

D7 123G D7

make a fuss, Who - ev - er you are, you are one of us, If you're
 when we're done, Say, by yump - ing yim - min - y, we'll have fun, If you're
 om - ni - bus, We'll bloom - in' well know that you're one of us, If you're
 ev - 'ry - one, Who -

G Am7 D7 G D7

I - rish, this is the place for you. 2. If you're
 Sven - ska, you're wel - come one and all. 3. If you're
 Brit - ish, duck - ie, how do you do? 4. If you're

4. G D7 G

ev - er you are, wher - ev - er you're from, You lib - er - ty lov - in'

D7 G Am7 A#dim G

son - of - a - gun, What are you wait - in' for? COME IN - TO THE

E7 D7 G

PAR-LOR, This is the place for you.