

The University of Maine

DigitalCommons@UMaine

Vocal Popular Sheet Music Collection

Public domain (may be downloaded in full)

1906

A Last Kiss

Calvert R Lowery
Composer

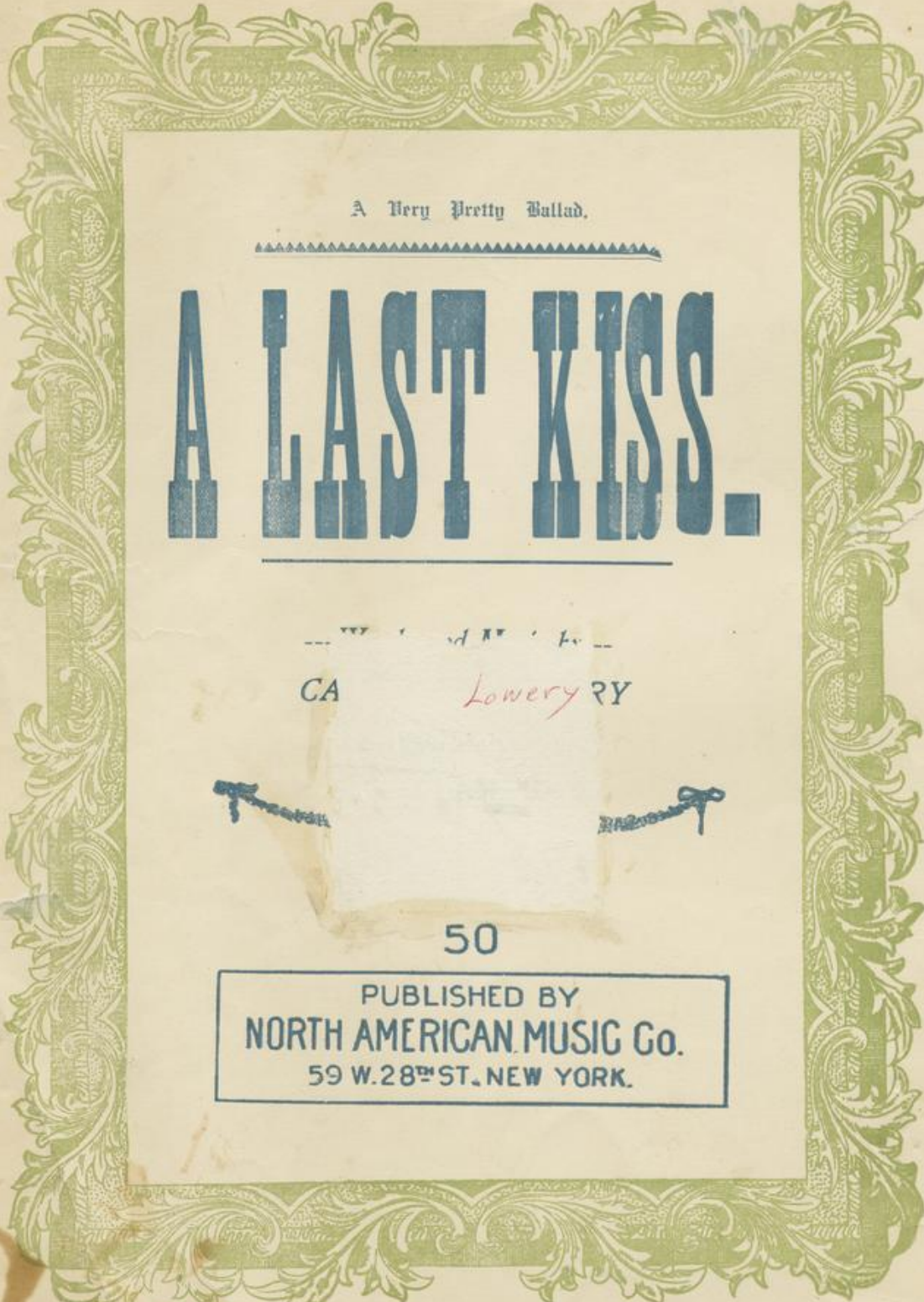
Follow this and additional works at: <https://digitalcommons.library.umaine.edu/mmb-vp>

Recommended Citation

Lowery, Calvert R, "A Last Kiss" (1906). *Vocal Popular Sheet Music Collection*. Score 946.
<https://digitalcommons.library.umaine.edu/mmb-vp/946>

This Book is brought to you for free and open access by DigitalCommons@UMaine. It has been accepted for inclusion in Vocal Popular Sheet Music Collection by an authorized administrator of DigitalCommons@UMaine. For more information, please contact um.library.technical.services@maine.edu.

Beatrice
Knoxton



A Very Pretty Ballad.

A LAST KISS.

CA *Lowery* RY



50

PUBLISHED BY
NORTH AMERICAN MUSIC Co.
59 W. 28TH ST. NEW YORK.

Vp. 003051
1906
LAST

A Last Kiss.

Intro.
Moderato.

CALVERT R. LOWERY.

Piano.

The piano introduction is in 6/8 time, marked 'Moderato' and 'mf'. It features a treble and bass staff. The treble staff begins with a melodic line of eighth notes, while the bass staff provides a harmonic accompaniment with chords and single notes.

1. Sad-ly our eve in the sun-sets glow Sat a lad and his sweet-heart fair. —
 2. In af-ter years a note he re-cieved And the tress of hair, she gave him. —

The first system of the song includes a vocal line and piano accompaniment. The vocal line is in a treble clef with a key signature of one sharp (F#). The piano accompaniment is in a grand staff (treble and bass clefs). The lyrics are written below the vocal line.

We asked of her, his voice soft and low While car-ess - ing a lock of hair. — Why are
 That he loved her she now believed And the thought made her eye grow dim — The

The second system continues the vocal and piano accompaniment. The vocal line and piano accompaniment are in the same key and time signature as the first system.

you giv-ing me — this ra-ven tress Then re - fuse the kiss I am yearn - ing. —
 tress as were tak - en from near his heart She had read with tear dimmed eye. —

The third system concludes the song with the final vocal and piano accompaniment. The vocal line and piano accompaniment are in the same key and time signature as the previous systems.

Why wont you give me our last fond car-ess And why the tears your eye burn - ing.
A tale she heard had caused them to part And the harshwords in days gone by. —

Refrain.

Be-cause I have learned to love you so well That it breaks my heart when I find — That

each car ess and the love you tell Is but from your lips and your mind. — You can

take the curl to re - mem - ber Nell But don't think that love's al-ways blind. —