

The University of Maine

DigitalCommons@UMaine

Maine Sheet Music Collection

Public domain (may be downloaded in full)

1901

A Kineo Love Song

Fred H Clifford

Composer

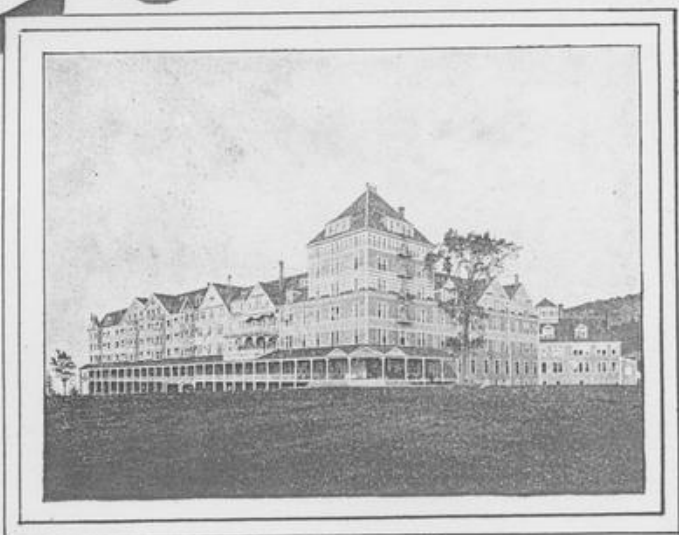
Follow this and additional works at: <https://digitalcommons.library.umaine.edu/mmb-me>

Recommended Citation

Clifford, Fred H, "A Kineo Love Song" (1901). *Maine Sheet Music Collection*. Score 115.
<https://digitalcommons.library.umaine.edu/mmb-me/115>

This Book is brought to you for free and open access by DigitalCommons@UMaine. It has been accepted for inclusion in Maine Sheet Music Collection by an authorized administrator of DigitalCommons@UMaine. For more information, please contact um.library.technical.services@maine.edu.

A KINF LOVE SONG




Words and Music
by

(5)

Fred A. Clifford

M. H. ANDREWS.
98 Main St. Bangor, Me.

Bagaduce Music 
Lending Library
Blue Hill, Maine
Donor: 0

Vp Me.
000543
cli

250

A KINEO LOVE SONG.

Words and Music by FRED H. CLIFFORD.

Moderato.

'Twas at
Up -
At

Kin - e - o they met one sum-mer morn-ing This maid pet - ite and lad so
on the golf links they would play to - geth - er This maid pet - ite and lad so
eve. they met when sil - v'ry moon-beams fall - ing Would soft - ly light the sum - mer

neat They failed to heed the old - time lov - ers warn - ing And eyes soon
neat They climbed themoun-tain in all sorts of weath - er And watched the
night. And heard the dis - tant night birds gen tly call - ing This maid pet -

A KINEO LOVE SONG

told of hearts not cold, The shad - ed by - ways near the rip - pling
skies with lov - ers eyes, In his ca - noe they skimmed the spark - ling
ite and lad so neat, Far down the broad ve - ran - da's length they

wa - ters Straight - way be - came as lanes for lov - ers true, And
wa - ters, Or float - ed on the lake's slow swell - ing tide, And
wan - dered In per - fect bliss, a most con - tent - ed twain, And

rit.
ev - 'ry day the tight'ning cords of cu - pid, Grew firm - er still, as they are wont to do.
as they went the young man sought an answer, That some day he might call the maid his bride. Ah!
as their hearts were thus bound close to - geth - er, The love chord sech - oed out this sweet re - refrain.

rit.

Tempo di Valse.

This is the Kin-e-o love song Sweet I would sing to you, — While

all of your ra-di-ant beau - ty, Is thrill-ing me through and through; — There

nev-er could be a day bright - er Than that of my Kin-e-o stay, — When wed

stroll arm in arm From the Beach to the Farm, And you'd promise to wed me some day. —