

The University of Maine

DigitalCommons@UMaine

Vocal Popular Sheet Music Collection

Public domain (may be downloaded in full)

1910

Ah! Sweet Mystery of Life : (The Dream Melody): For It Is Love Alone That Rules For Aye!

Victor Herbert
Composer

Rida Johnson Young
Lyricist

Follow this and additional works at: <https://digitalcommons.library.umaine.edu/mmb-vp>

Recommended Citation

Herbert, Victor and Young, Rida Johnson, "Ah! Sweet Mystery of Life : (The Dream Melody): For It Is Love Alone That Rules For Aye!" (1910). *Vocal Popular Sheet Music Collection*. Score 30.
<https://digitalcommons.library.umaine.edu/mmb-vp/30>

This Book is brought to you for free and open access by DigitalCommons@UMaine. It has been accepted for inclusion in Vocal Popular Sheet Music Collection by an authorized administrator of DigitalCommons@UMaine. For more information, please contact um.library.technical.services@maine.edu.

AH! SWEET MYSTERY OF LIFE

MUSIC BY
VICTOR HERBERT

LYRIC BY
RIDA JOHNSON YOUNG

From The Paramount Picture

THE GREAT VICTOR HERBERT

ALLAN JONES
MARY MARTIN
WALTER CONNOLLY
LEE BOWMAN
JUDITH BARRETT
SUSANNA FOSTER

SOMEDAY
AL FRESCO
THINE ALONE
PUNCHINELLO
ALL FOR YOU
KISS ME AGAIN
ABSINTHE FRAPPE
ROSE OF THE WORLD
A KISS IN THE DARK
MARCH OF THE TOYS
NEAPOLITAN LOVE SONG
THERE ONCE WAS AN OWL
AH! SWEET MYSTERY OF LIFE
TO THE LAND OF MY OWN ROMANCE
I'M FALLING IN LOVE WITH SOMEONE
I MIGHT BE YOUR "ONCE-IN-A-WHILE"

M. WITMARK & SONS
NEW YORK

Vp.000059
1910

Ah!

The SECOND



Victor Herbert
SONG ALBUM

CONTENTS

From "Naughty Marietta"

I'm Falling In Love
With Someone

Tramp! Tramp! Tramp!

From "The Red Mill"

The Isle Of Our Dreams

From "The Enchantress"

To The Land of My
Own Romance

From "Princess Pat"

All For You

Neapolitan Love Song

From "The Dream Girl"

My Dream Girl

At The Rainbow's End

From "The Only Girl"

When You're Wearing
The Ball And Chain

Love Laid His Sleepless Head

•
ONE
DOLLAR
•

Obtainable Wherever Music Is Sold

M. WITMARK & SONS • NEW YORK

Ah! Sweet Mystery Of Life

(The Dream Melody)

For It Is Love Alone
That Rules For Aye!

Music by
VICTOR HERBERT

Lyric by
RIDA JOHNSON YOUNG

Moderato

mf *accel.*

The piano introduction is in 6/8 time with a key signature of two flats. It begins with a melody in the right hand and a bass line in the left hand. The melody features several triplet markings. The dynamics start at mezzo-forte (*mf*) and increase to an accelerated tempo (*accel.*) towards the end of the introduction.

Andante

Ah! sweet mys - ter - y of life, at last I've

f *pp colla voce*

The first system of the vocal entry is in 6/8 time. The tempo is marked Andante. The vocal line begins with a long note on 'Ah!' followed by the lyrics. The piano accompaniment is in the left hand, providing harmonic support. Dynamics include forte (*f*) and piano (*pp colla voce*).

found thee, Ah! I know at last the se - cret of it

The second system continues the vocal melody and piano accompaniment. The lyrics 'found thee, Ah! I know at last the se - cret of it' are set to the music. The piano accompaniment features a steady bass line with chords.

all; All the long - ing, seek - ing, stri - ving, wait - ing

The third system concludes the vocal entry with the lyrics 'all; All the long - ing, seek - ing, stri - ving, wait - ing'. The piano accompaniment continues with a consistent harmonic texture.

Bagaduce Music

8368 Lending Library

16999 - 3 Blue Hill, Maine

Donor: 1158

Copyright MCMX by M. Witmark & Sons

Copyright Renewed

International Copyright Secured



yearn - ing,— The burn - ing hopes, the joy and i - dle tears that

fall! _____ For 'tis love, and love a - lone, the world is

seek - ing; And 'tis love, and love a - lone, that can re -

pay! 'Tis the an - swer, 'tis the end and all of liv - ing,— For it is

allargando **ff**

ten. love a - lone that rules for aye! *Grandioso* For 'tis love, and love a - lone, the world is *ff*

seek - ing, For 'tis love, and love a - lone that can re - pay! 'Tis the

an - swer, 'tis the end and all of liv - ing! — For it is love a - lone that rules for *ten.*

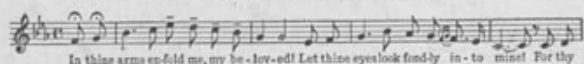
aye! *ff* *allargando* *ff* *ffz* *sva*

Some of the GREAT Songs from the FILM
"THE GREAT VICTOR HERBERT"

A PARAMOUNT PICTURE—WITH MUSIC
 By **VICTOR HERBERT**

THINE ALONE

Lyric by HENRY BLOSSOM



In thine arms en-fold me, my be-lov-ed! Let thine eyes look fond-ly in-to mine! For thy

Copyright MCMXVII, by M. Witmark & Sons

VOCAL: Solos—C, Eb, F, G, 50c ea.
 DUETS: F, G, 60c ea.
 CHORAL: SATB, 16c; TTBB, 16c

KISS ME AGAIN

Lyric by HENRY BLOSSOM

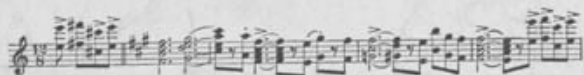


Sweet summer breeze, whis-per-ing trees, Stars shin-ing soft - ty a - bove,—

Copyright MCMXV, by M. Witmark & Sons

VOCAL: Solos—F, G, A, Bb, 50c ea.
 DUETS: A, 60c
 CHORAL: SSAA, 18c; SATB, 16c; TTBB, 20c
 SYMPHONY BAND: "A" Band, \$4.00; "B" Band, \$3.00; "C" Band, \$2.00; Condensed Score, 75c; Extra Parts, 20c ea.
 INSTRUMENTAL: Violin and Piano, 60c; Cello and Piano, 60c; Violin, Cello and Piano, 75c; Bb Sax. and Piano, 60c; Eb Alto Sax. or Clarinet and Piano, 60c; Bb Trumpet and Piano, 60c; Bb Clarinet and Piano, 60c; C Sax. and Piano, 60c; Cornet or Trombone and Piano, 75c; Piano Solo (Waltz), 50c

MARCH OF THE TOYS



Copyright MCMIII, by M. Witmark & Sons

PIANO: Solo, 50c; 4 Hands (Two Pianos), \$1.25
 CHORAL: SSA, 25c; TTBB, 35c
 BAND: Standard Band, \$2.00
 ORCHESTRA: S.O., \$1.50; F.O., \$2.00

A KISS IN THE DARK

Lyric by B. G. DE SYLVA



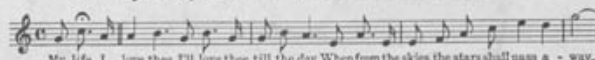
Kiss in the dark Was to him just a lark, But to me 'twas a

Copyright MCMXXII, by M. Witmark & Sons

VOCAL: Solo—C, D, Eb, 50c ea.
 DUETS: Eb, C, 60c ea.
 CHORAL: SATB, 16c; TTBB, 16c

ROSE OF THE WORLD

Lyric by GLEN MACDONOUGH



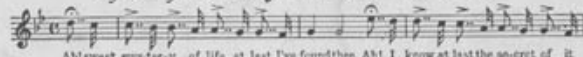
My life I love thee I'll love thee till the day When from the skies, the stars shall pass a - way.

Copyright MCMVIII, by M. Witmark & Sons

VOCAL: Solo—C, 50c

AH! SWEET MYSTERY OF LIFE

Lyric by RIDA JOHNSON YOUNG



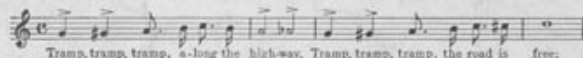
Ah! sweet mys-ter-y of life, at last I've found thee, Ah! I know at last the se-cret of it

Copyright MCMX, by M. Witmark & Sons

VOCAL: Solo—Ab, Bb, C, D, 50c ea.
 DUETS: Bb, D, 60c ea.
 CHORAL: SA, W-2160, 15c; SSA, W-2161, 15c; SSAA, 18c; TBB, 16c; SAB, 15c; SATB, 16c; TTBB, 16c
 INSTRUMENTAL: Violin and Piano, 60c; Cello and Piano, 60c; Violin, Cello and Piano, 75c; Piano Solo, 50c

TO THE LAND OF MY OWN ROMANCE

Lyric by HARRY B. SMITH



Tramp, tramp, tramp, a-long the high-way, Tramp, tramp, tramp, the road is free;

Copyright MCMXI, by M. Witmark & Sons

VOCAL: Solo—Bb, C, Eb, 50c ea.
 CHORAL: SATB, 16c; TTBB, 16c
 INSTRUMENTAL: Violin and Piano, 60c; Cello and Piano, 60c; Violin, Cello and Piano, 75c

M. WITMARK & SONS NEW YORK