

2015

## ARI Brochure 2015

Anne L. Langston

University of Maine - Main, [anne.langston@umit.maine.edu](mailto:anne.langston@umit.maine.edu)

Follow this and additional works at: [https://digitalcommons.library.umaine.edu/ari\\_brochures](https://digitalcommons.library.umaine.edu/ari_brochures)



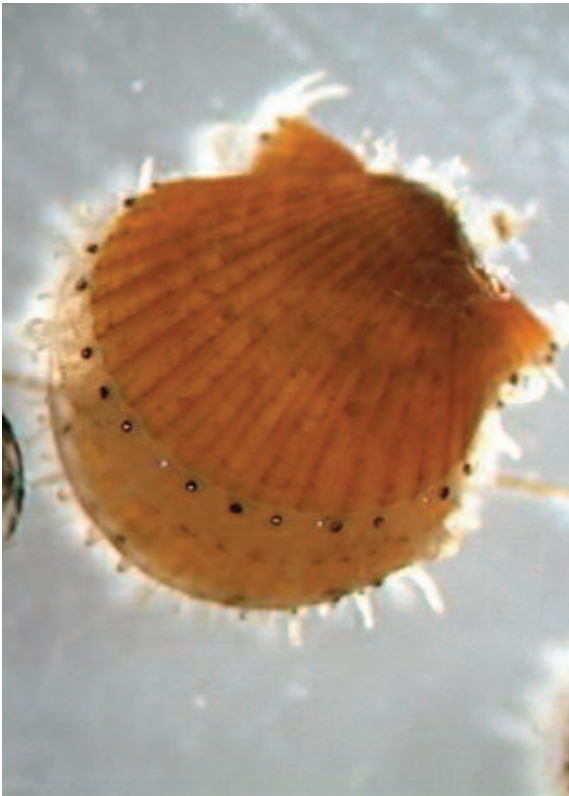
Part of the [Aquaculture and Fisheries Commons](#)

---

### Repository Citation

Langston, Anne L., "ARI Brochure 2015" (2015). *Brochures*. 1.  
[https://digitalcommons.library.umaine.edu/ari\\_brochures/1](https://digitalcommons.library.umaine.edu/ari_brochures/1)

This Other is brought to you for free and open access by DigitalCommons@UMaine. It has been accepted for inclusion in Brochures by an authorized administrator of DigitalCommons@UMaine. For more information, please contact [um.library.technical.services@maine.edu](mailto:um.library.technical.services@maine.edu).



THE UNIVERSITY OF  
**MAINE**

Aquaculture  
Research Institute



**ABOUT US**



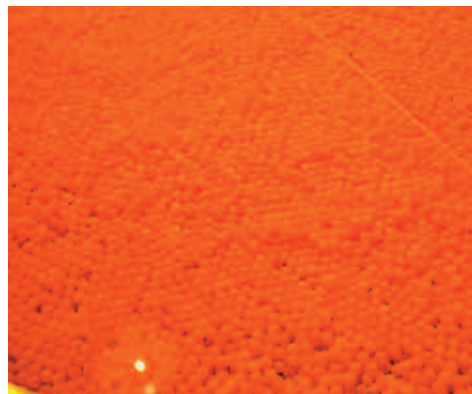
**University of maine**  
5735 Hitchner Hall, Room 179  
Orono, ME 04469-5735

(207) 581-4397 • [ari@umit.maine.edu](mailto:ari@umit.maine.edu).



Follow us on Facebook and Twitter





## Background

**T**he University of Maine Aquaculture Research Institute (ARI) is a leading cold-water aquaculture research center in the US. ARI is an interdisciplinary research unit that supports all areas of aquaculture research with aquatic animal health, sustainable aquaculture production and social dimensions of aquaculture being key focus areas for the Institute. ARI works closely with the aquaculture industry in Maine, which has the largest marine aquaculture industry sector in the US, by farm gate value. Maine's salmon farming industry produces in the region of 50% of all of the farmed salmon raised in the US.

ARI combines the research strengths of multiple facilities, schools and departments at the University of Maine. The base facility is on the Orono campus consisting of offices, laboratories, a BSL2 containment disease research facility, as well as the Aquaculture Research Center which houses our Interpretation Center and numerous small-scale research projects. The Center for Cooperative Aquaculture Research (CCAR) at Franklin, Maine provides the Institute with large scale research facilities and is particularly well suited for technology transfer projects, long term or large scale trials, and broodstock programs. The Darling Marine Center (DMC) in Walpole, Maine specializes in shellfish aquaculture and provides UMaine's only research shellfish hatchery.

## Our Research

### AQUATIC ANIMAL HEALTH

- Sea lice ecology and management
- Environmental impacts on shellfish health
- Host-pathogen interactions
- Reproductive endocrinology
- Basic immunology of new species for farming
- Vaccine development

### SUSTAINABLE AQUACULTURE PRODUCTION

- Seaweed product development
- Species diversification
- Developmental biology
- Biology of new aquaculture species

### SOCIAL DIMENSIONS OF AQUACULTURE

- Sustainable Ecological Aquaculture Research Network
- Knowledge management in aquaculture
- Social-ecological systems

### INDUSTRY CONTRACT RESEARCH IN AQUATIC ANIMAL HEALTH

- Oversight and programmatic support
- Product Development
- Challenge and Trial Services
- Laboratory Services
- Training

## Who are we?



Director:  
Paul Anderson



Associate Director:  
Anne Langston

### ARI Core Staff:

Deborah Bouchard  
Neil Greenberg  
Mike Pietrak

### ARI Core Faculty:

Sarah Barker  
Ian Bricknell  
Tim Bowden  
Heather Hamlin